

## Felt pads missing after replacement of backrest frame

Topic number	LI91.10-P-048503
Version	2
Design group	91.10 Front seats
Date	07-09-2014
Validity	Model 211/219/203
Reason for change	Text changed and damage code updated
Reason for block	

### Complaint:

Grunting noise or ripping noise at seat-back lining

### Cause:

Felt elements missing between seat-back lining bracket and backrest frame.

### Remedy:

Apply felt as per gluing plan (attachment).

Attachments	
File	Description
Arbeitsanleitung Filze auf Lehne.pdf	Work instructions for bonding felt elements to backrest

Symptoms
Body / Seat / Seat noises / Cracking
Body / Seat / Seat noises / Grunting
Body / Seat / Seat noises / Creaking

Parts							
Part number	ES1	ES2	Designation	Quantity	Note	EPC	Other ma- ke part
A0009101134			Backrest frame	1		X	
A0009101234			Backrest frame	1		X	
A0009101334			Backrest frame	1		X	
A0009101434			Backrest frame	1		X	
A0009104034			Backrest frame	1		X	
A0009104234			Backrest frame	1		X	
A1267820197			Felt	4		X	

Work units				
Op. no.	Operation text	Time	Damage code	Note
			91A41 36	Left front seat backrest frame
			91N41 36	Right front seat backrest frame

Validity		
Vehicle	Engine	Transmission
203.004	*	*
203.006	*	*
203.007	*	*
203.008	*	*
203.016	*	*
203.018	*	*
203.020	*	*
203.035	*	*
203.040	*	*
203.042	*	*
203.043	*	*
203.045	*	*
203.046	*	*
203.052	*	*
203.054	*	*
203.056	*	*
203.061	*	*
203.064	*	*
203.065	*	*
203.076	*	*
203.081	*	*
203.084	*	*
203.087	*	*
203.092	*	*
203.204	*	*
203.206	*	*
203.207	*	*
203.208	*	*
203.216	*	*
203.218	*	*
203.220	*	*
203.235	*	*
203.240	*	*
203.242	*	*

203.243	*	*
203.245	*	*
203.246	*	*
203.252	*	*
203.254	*	*
203.256	*	*
203.261	*	*
203.264	*	*
203.265	*	*
203.276	*	*
203.281	*	*
203.284	*	*
203.287	*	*
203.292	*	*
203.706	*	*
203.707	*	*
203.708	*	*
203.718	*	*
203.735	*	*
203.740	*	*
203.742	*	*
203.743	*	*
203.745	*	*
203.746	*	*
203.747	*	*
203.752	*	*
203.756	*	*
203.764	*	*
211.004	*	*
211.006	*	*
211.007	*	*
211.008	*	*
211.016	*	*
211.020	*	*
211.022	*	*
211.023	*	*
211.026	*	*
211.028	*	*
211.029	*	*
211.041	*	*
211.042	*	*
211.052	*	*
211.054	*	*

211.056	*	*
211.057	*	*
211.061	*	*
211.065	*	*
211.070	*	*
211.072	*	*
211.076	*	*
211.077	*	*
211.080	*	*
211.082	*	*
211.083	*	*
211.084	*	*
211.087	*	*
211.089	*	*
211.090	*	*
211.092	*	*
211.206	*	*
211.207	*	*
211.208	*	*
211.216	*	*
211.220	*	*
211.222	*	*
211.223	*	*
211.226	*	*
211.241	*	*
211.242	*	*
211.252	*	*
211.254	*	*
211.256	*	*
211.261	*	*
211.265	*	*
211.270	*	*
211.272	*	*
211.276	*	*
211.277	*	*
211.280	*	*
211.282	*	*
211.283	*	*
211.284	*	*
211.287	*	*
211.289	*	*
211.290	*	*
211.292	*	*

211.606	*	*
211.608	*	*
211.616	*	*
211.620	*	*
219.322	*	*
219.356	*	*
219.357	*	*
219.372	*	*
219.375	*	*
219.376	*	*
219.377	*	*

Full model designation breakdown		
Vehicle	Engine	Transmission
203.004	611.962	716.601
203.004	611.962	716.603
203.004	611.962	716.604
203.004	611.962	722.619
203.004	611.962	722.699
203.006	611.962	716.640
203.006	611.962	716.647
203.006	611.962	716.651
203.006	611.962	722.699
203.007	646.962	716.604
203.007	646.962	716.606
203.007	646.962	722.699
203.007	646.963	716.604
203.007	646.963	716.606
203.007	646.963	722.699
203.008	646.963	716.649
203.008	646.963	716.654
203.008	646.963	722.699
203.016	612.962	716.641
203.016	612.962	716.648
203.016	612.962	716.649
203.016	612.962	716.654
203.016	612.962	722.634
203.016	612.962	722.640
203.018	612.990	722.642
203.020	642.910	716.653
203.020	642.910	722.902
203.035	111.951	716.620

203.035	111.951	716.633
203.035	111.951	722.602
203.035	111.951	722.615
203.040	271.948	716.628
203.040	271.948	716.631
203.040	271.948	722.695
203.042	271.940	716.605
203.042	271.940	716.628
203.042	271.940	716.631
203.042	271.940	722.695
203.043	271.942	716.628
203.043	271.942	716.631
203.043	271.942	722.695
203.045	111.955	716.622
203.045	111.955	716.630
203.045	111.955	722.616
203.046	271.946	716.605
203.046	271.946	716.628
203.046	271.946	716.631
203.046	271.946	722.695
203.052	272.920	716.638
203.052	272.920	722.998
203.054	272.940	716.669
203.054	272.940	722.999
203.056	272.960	716.664
203.056	272.960	722.906
203.061	112.912	716.623
203.061	112.912	716.634
203.061	112.912	716.638
203.061	112.912	722.696
203.064	112.946	716.667
203.064	112.946	716.669
203.064	112.946	722.618
203.065	112.961	722.633
203.065	112.961	722.641
203.076	113.988	722.636
203.081	112.916	722.667
203.084	112.953	722.668
203.087	272.970	722.676
203.092	272.941	722.690
203.204	611.962	716.601
203.204	611.962	716.603
203.204	611.962	716.604

203.204	611.962	722.619
203.204	611.962	722.699
203.206	611.962	716.640
203.206	611.962	716.647
203.206	611.962	716.651
203.206	611.962	722.699
203.207	646.962	716.604
203.207	646.962	716.606
203.207	646.962	722.699
203.207	646.963	716.604
203.207	646.963	716.606
203.207	646.963	722.699
203.208	646.963	716.649
203.208	646.963	716.654
203.208	646.963	722.699
203.216	612.962	716.641
203.216	612.962	716.648
203.216	612.962	716.649
203.216	612.962	716.654
203.216	612.962	722.634
203.216	612.962	722.640
203.218	612.990	722.642
203.220	642.910	716.653
203.220	642.910	722.902
203.235	111.951	716.620
203.235	111.951	716.633
203.235	111.951	722.602
203.235	111.951	722.615
203.240	271.948	716.628
203.240	271.948	716.631
203.240	271.948	722.695
203.242	271.940	716.605
203.242	271.940	716.628
203.242	271.940	716.631
203.242	271.940	722.695
203.243	271.942	716.628
203.243	271.942	716.631
203.243	271.942	722.695
203.245	111.955	716.620
203.245	111.955	716.622
203.245	111.955	716.627
203.245	111.955	716.630
203.245	111.955	722.602

203.245	111.955	722.616
203.246	271.946	716.605
203.246	271.946	716.628
203.246	271.946	716.631
203.246	271.946	722.695
203.252	272.920	716.638
203.252	272.920	722.998
203.254	272.940	716.669
203.254	272.940	722.999
203.256	272.960	716.664
203.256	272.960	722.906
203.261	112.912	716.623
203.261	112.912	716.634
203.261	112.912	722.696
203.261	112.912	722.698
203.264	112.946	722.618
203.264	112.946	722.633
203.265	112.961	722.633
203.265	112.961	722.641
203.276	113.988	722.636
203.281	112.916	722.667
203.284	112.953	722.668
203.287	272.970	722.676
203.292	272.941	722.690
203.706	611.962	716.640
203.706	611.962	716.647
203.706	611.962	716.651
203.706	611.962	722.699
203.707	646.962	711.655
203.707	646.962	716.604
203.707	646.962	716.606
203.707	646.962	722.699
203.707	646.963	711.655
203.707	646.963	716.604
203.707	646.963	716.606
203.707	646.963	722.699
203.708	646.963	711.653
203.708	646.963	716.649
203.708	646.963	716.654
203.708	646.963	722.699
203.718	612.990	722.642
203.735	111.951	716.620
203.735	111.951	716.633



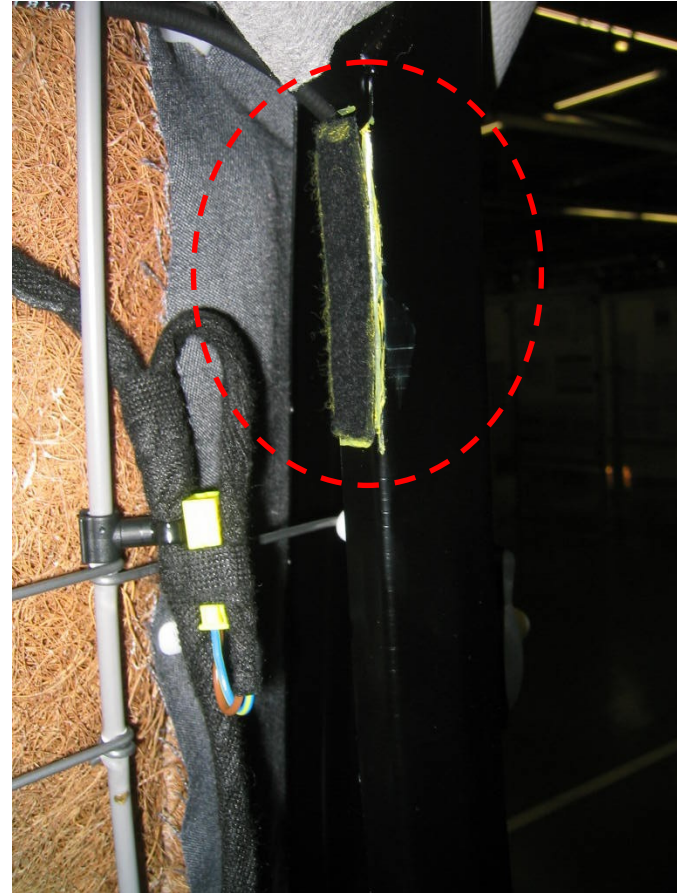
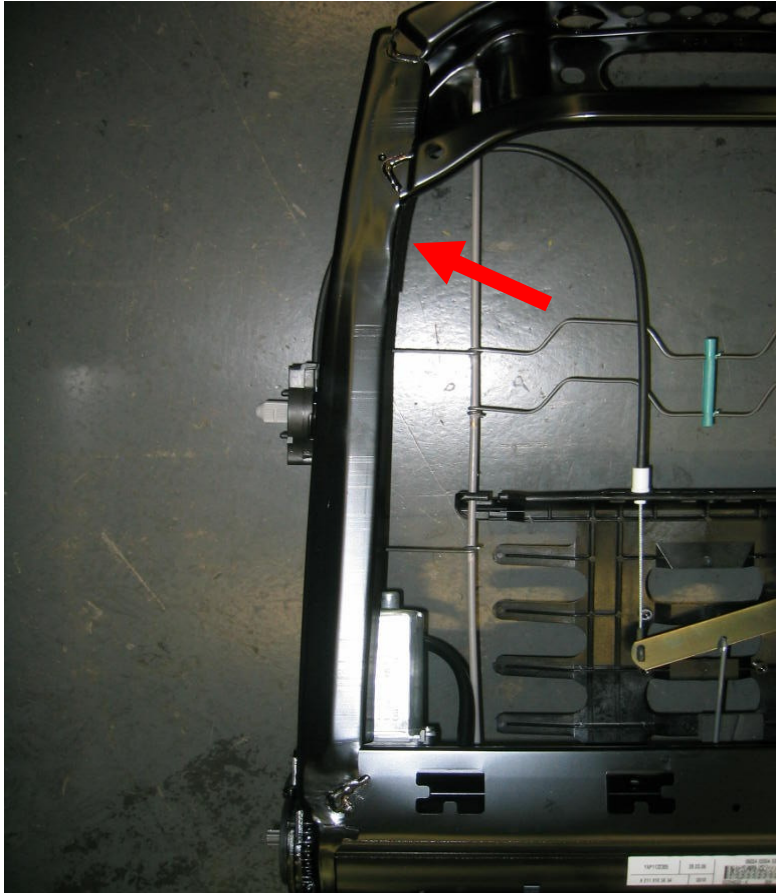
203.735	111.951	722.602
203.735	111.951	722.615
203.740	271.948	716.605
203.740	271.948	716.628
203.740	271.948	716.631
203.740	271.948	722.695
203.742	271.940	716.605
203.742	271.940	716.628
203.742	271.940	716.631
203.742	271.940	722.695
203.743	271.942	716.628
203.743	271.942	722.695
203.745	111.955	716.622
203.745	111.955	716.627
203.745	111.955	716.630
203.745	111.955	722.616
203.746	271.946	711.656
203.746	271.946	716.605
203.746	271.946	716.628
203.746	271.946	716.631
203.746	271.946	722.695
203.747	111.981	716.632
203.747	111.981	716.662
203.747	111.981	716.663
203.747	111.981	716.668
203.747	111.981	722.616
203.752	272.920	711.656
203.752	272.920	716.638
203.752	272.920	722.998
203.756	272.960	711.654
203.756	272.960	716.664
203.756	272.960	722.906
203.764	112.946	716.667
203.764	112.946	716.669
203.764	112.946	722.618
211.004	646.951	716.604
211.004	646.951	716.606
211.004	646.951	722.699
211.006	646.961	716.649
211.006	646.961	722.699
211.007	646.820	716.654
211.007	646.820	722.699
211.007	646.821	716.654

211.007	646.821	722.699
211.008	646.821	716.654
211.008	646.821	722.640
211.016	647.961	716.649
211.016	647.961	716.654
211.016	647.961	722.640
211.020	642.920	716.646
211.020	642.920	716.653
211.020	642.920	722.902
211.022	642.920	722.902
211.023	648.961	722.640
211.026	648.961	722.626
211.028	628.961	722.639
211.029	629.910	722.903
211.041	271.956	716.628
211.041	271.956	716.631
211.041	271.956	722.695
211.042	271.941	716.628
211.042	271.941	716.631
211.042	271.941	722.695
211.052	272.922	716.634
211.052	272.922	716.638
211.052	272.922	722.998
211.054	272.943	716.667
211.054	272.943	716.669
211.054	272.943	722.999
211.056	272.964	716.665
211.056	272.964	716.666
211.056	272.964	722.906
211.057	272.985	716.665
211.057	272.985	716.666
211.057	272.985	722.906
211.061	112.913	716.623
211.061	112.913	716.634
211.061	112.913	722.696
211.065	112.949	722.618
211.070	113.967	722.633
211.070	113.967	722.901
211.072	273.960	722.904
211.076	113.990	722.643
211.077	156.983	722.907
211.080	112.917	722.667
211.082	112.954	722.668

211.083	113.969	722.672
211.084	642.921	722.689
211.087	272.972	716.665
211.087	272.972	716.666
211.087	272.972	722.676
211.089	642.921	722.689
211.090	273.962	722.677
211.092	272.944	716.665
211.092	272.944	716.666
211.092	272.944	722.690
211.206	646.961	716.649
211.206	646.961	722.699
211.207	646.821	716.654
211.207	646.821	722.640
211.207	646.821	722.699
211.208	646.821	716.654
211.208	646.821	722.640
211.216	647.961	716.649
211.216	647.961	716.654
211.216	647.961	722.640
211.220	642.920	716.646
211.220	642.920	716.653
211.220	642.920	722.902
211.222	642.920	722.902
211.223	648.961	722.640
211.226	648.961	722.626
211.241	271.956	716.628
211.241	271.956	716.631
211.241	271.956	722.695
211.242	271.941	716.628
211.242	271.941	716.631
211.242	271.941	722.695
211.252	272.922	716.634
211.252	272.922	722.998
211.254	272.943	716.667
211.254	272.943	716.669
211.254	272.943	722.999
211.256	272.964	716.665
211.256	272.964	716.666
211.256	272.964	722.906
211.261	112.913	716.623
211.261	112.913	716.634
211.261	112.913	722.696

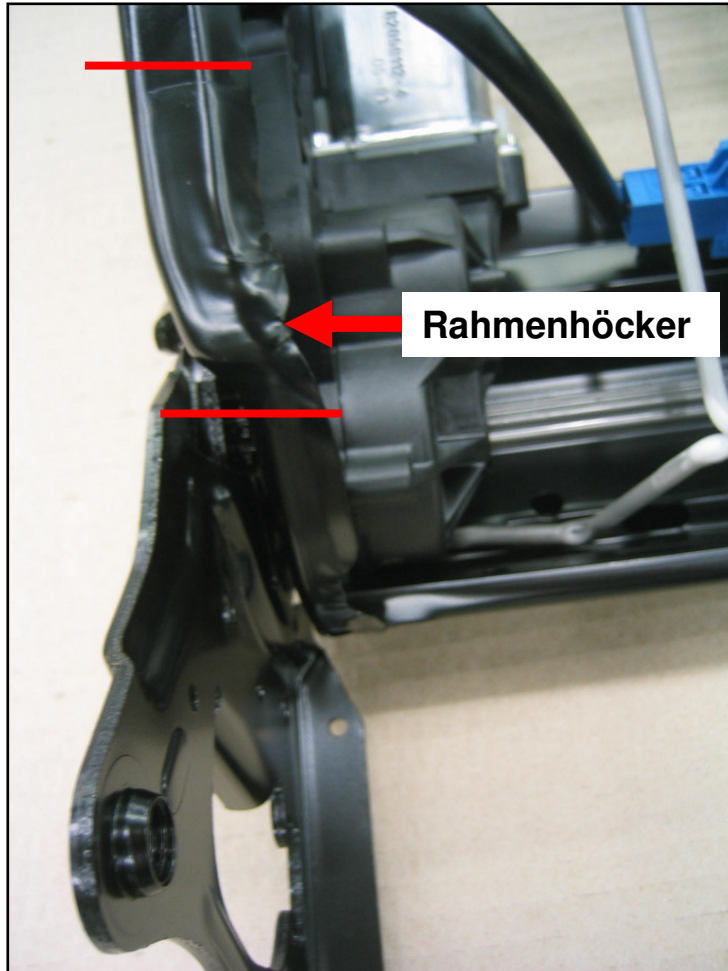
211.265	112.949	722.618
211.270	113.967	722.633
211.270	113.967	722.901
211.272	273.960	722.904
211.276	113.990	722.643
211.277	156.983	722.907
211.280	112.917	722.667
211.282	112.954	722.668
211.283	113.969	722.672
211.284	642.921	722.689
211.287	272.972	716.665
211.287	272.972	716.666
211.287	272.972	722.676
211.289	642.921	722.689
211.290	273.962	722.677
211.292	272.944	716.665
211.292	272.944	716.666
211.292	272.944	722.690
211.606	646.961	722.699
211.608	646.821	722.640
211.616	647.961	722.640
211.620	642.920	722.902
219.322	642.920	722.902
219.356	272.964	722.906
219.357	272.985	722.906
219.372	273.960	722.904
219.375	113.967	722.901
219.376	113.990	722.643
219.377	156.983	722.907
219.377	156.983	722.930

## Filz auf Lehnrahmen kleben 1X auf die Innenseite

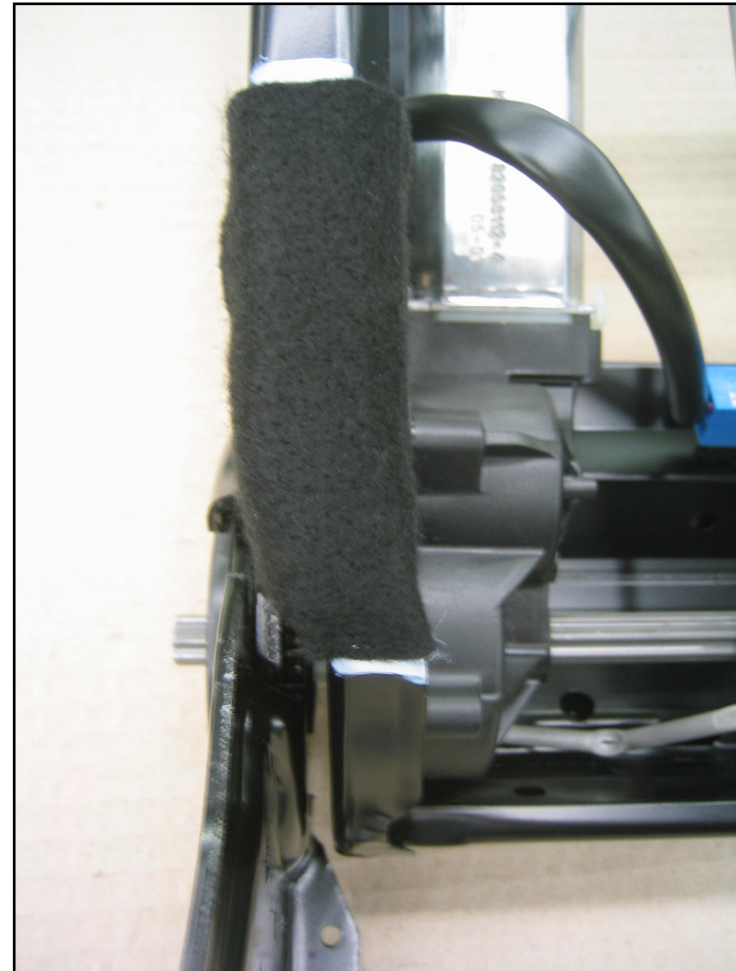


- Material: Filz 6 X 2,5 cm, gelieferten Filz auf dieses Maß zuschneiden  
Ort: Motorseite Rahmen oben, innen (ausgenommen Multikontur-Rahmen)  
Grund: Kollision zwischen Spannteilhalter und Rahmenkante

## Filz auf Lehnenrahmen kleben

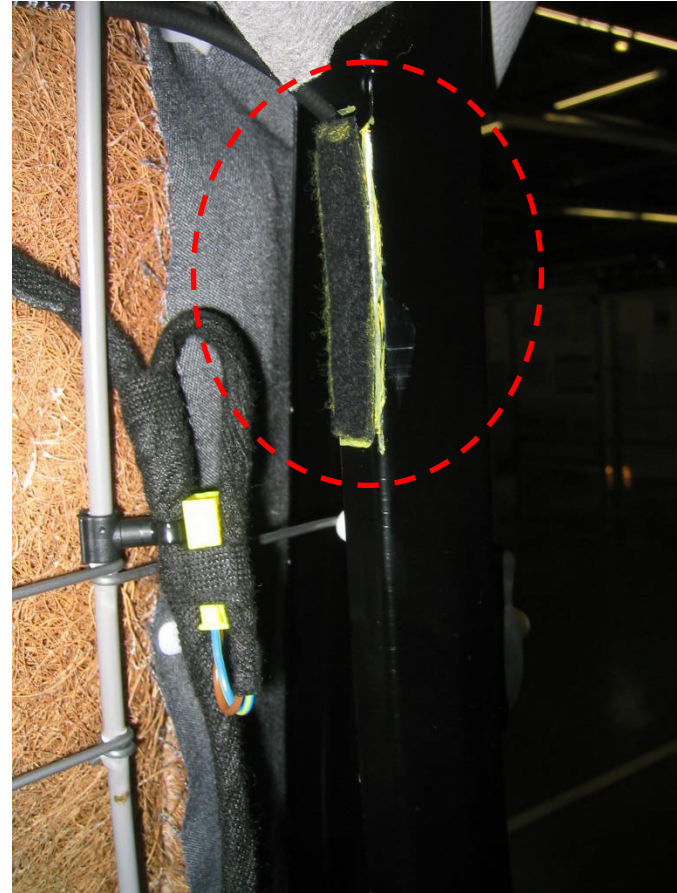
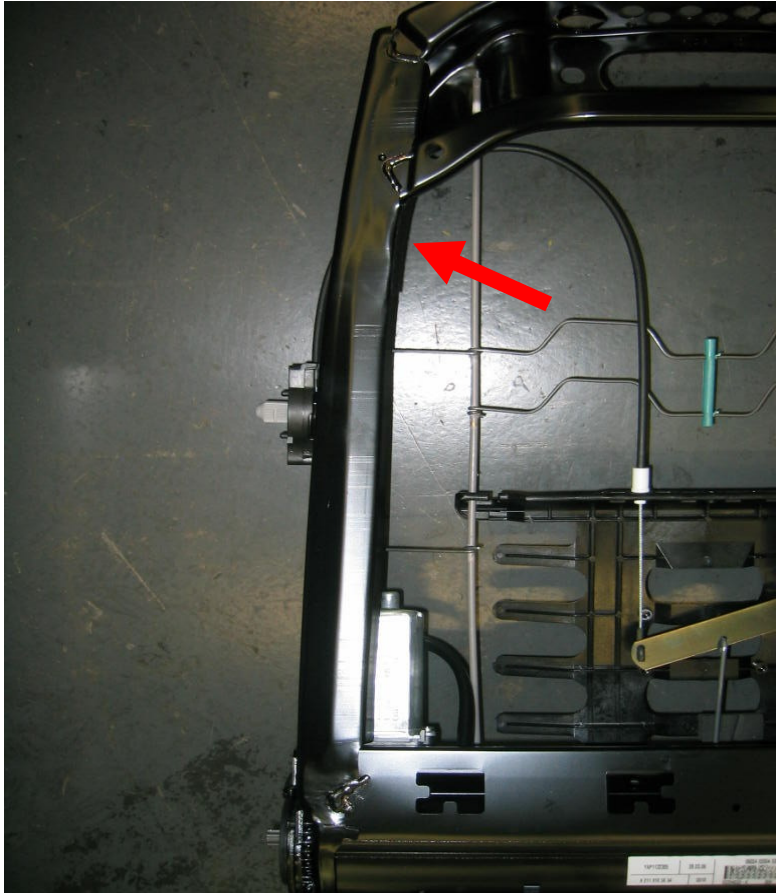


**Der Rahmenhöcker muss überklebt sein.**  
**Filzstreifen 8,0 X 2,5 cm**



**Position des Filzstreifens links und rechts am Lehnenrahmen**

## Stick the felt to the inside backrest frame

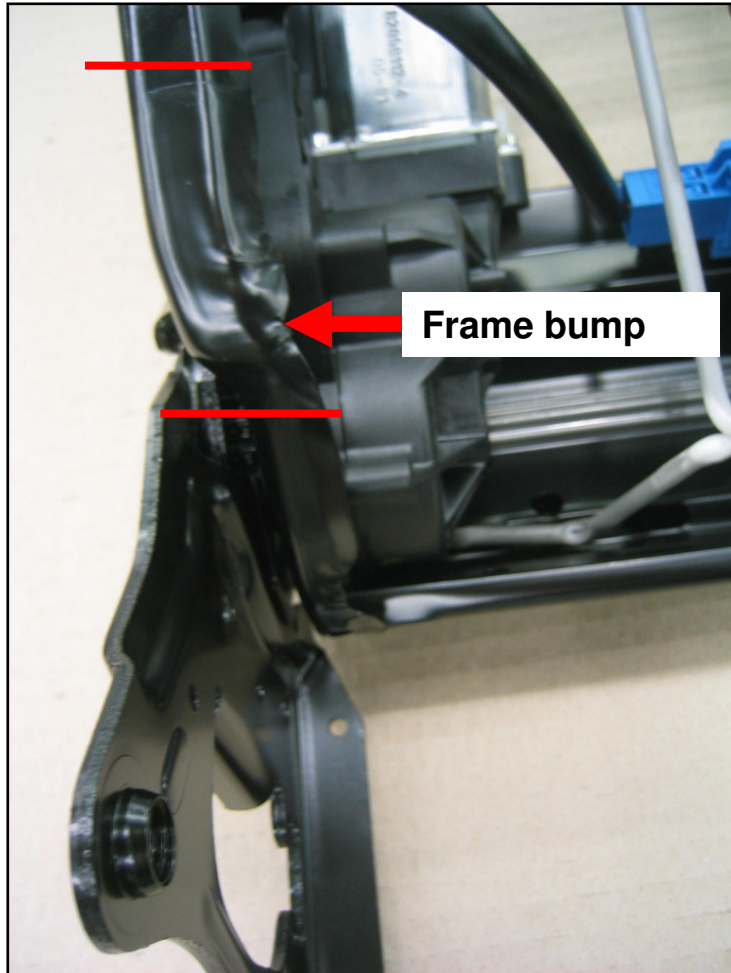


Material: felt 6 X 2,5 cm, cut the felt to the given size

Position: motor-sided upper frame (except multicontour-frame)

purpose: avoids collision between backcover-mount and frame

## Stick the felt to the backrest frame



**The Frame bump has to be covered by the felt**  
**Strip of felt 8,0 X 2,5 cm**



**Position of the feltstrip on the left and right side of the frame**