



Technical Service Bulletin

SUBJECT:		No: TSB-19-00-013	
ADDITIONAL MODEL CODES FOR 2018 OUTLANDER SPORT - SMR		DATE: September 2019	
		MODEL: 2018 Outlander Sport/RVR	
CIRCULATE TO:	<input type="checkbox"/> GENERAL MANAGER	<input type="checkbox"/> PARTS MANAGER	<input checked="" type="checkbox"/> TECHNICIAN
<input checked="" type="checkbox"/> SERVICE ADVISOR	<input checked="" type="checkbox"/> SERVICE MANAGER	<input checked="" type="checkbox"/> WARRANTY PROCESSOR	<input type="checkbox"/> SALES MANAGER

PURPOSE

This TSB updates the General section of the affected Service Manuals, to add model codes XTJHL2M & XTJHZL2M for U.S. and XTFHZL3M for Canada vehicles.

AFFECTED VEHICLES

- 2018 Outlander Sport/RVR

AFFECTED SERVICE MANUAL

- 2018 Outlander Sport Service Manual, Group 00-General



Please make the indicated changes to the 2018 Outlander Sport Service Manuals, Group 00-General
 -> Vehicle Identification.

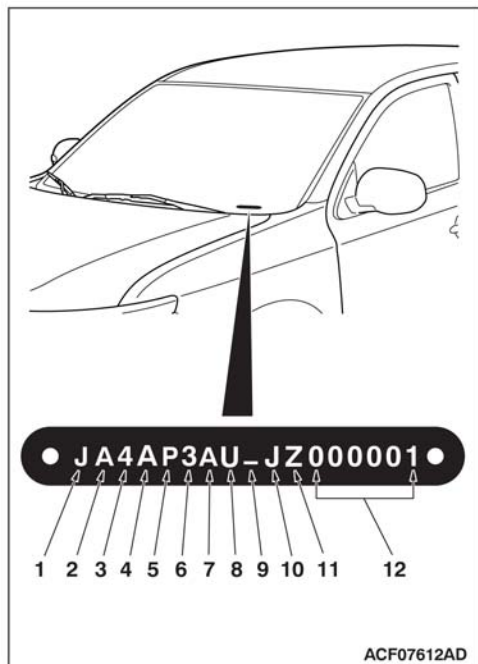
VEHICLE IDENTIFICATION

VEHICLE IDENTIFICATION NUMBER PLATE

M1001005503781

VEHICLES IDENTIFICATION NUMBER LOCATION

The vehicle identification number (VIN) plate is located on a plate attached to the left top side of the instrument panel.



CODE CHART

No.	Item	Content	
1	Country	J	Japan
2	Manufacturer	A	Mitsubishi motors corporation
3	Vehicle type	4	Multi-purpose vehicle
4	Others	Gross Vehicle Weight Rating/Passenger car Restraint System	
		A	4001-5000 lbs/Curtain Airbags (1st and 2nd Seat) and Seat-Mounted Side Airbags
5	Line	Gross Vehicle Weight Rating/ Brake System	
		P	OUTLANDER SPORT (FWD) <Vehicles for USA>
		R	OUTLANDER SPORT (AWD) <Vehicles for USA>
6	Price class	J	RVR (AWD) <Vehicles for Canada>
		3	Medium
7	Body	4	High
		A	5-door wagon
8	Engine	U	2.0 L DOHC MIVEC
		W	2.4 L DOHC MIVEC
9	Check digits*	0, 1, 2, 3, -----9, X	
10	Model year	J	2018 year
11	Plant	U	Mizushima
		Z	Okazaki
12	Serial number	000001 to 999999	

NOTE: *: Check digit means a single number, or letter X, used to verify the accuracy of transcription of vehicle identification number.

VEHICLE IDENTIFICATION NUMBER LIST

VEHICLES FOR USA (FOR FEDERAL EMISSION REGULATION)

Model code		VIN (Except sequence number)	Engine model	Transaxle model	Fuel system
GA2W	XTJHL2M	JA4AP3AU_JZ_	4B11 [1,998 cm ³ (121.9 cu in) DOHC MIVEC gasoline engine]	F1CJC (FWD, INVECS-III CVT)	MFI
	XTJH2L2M	JA4AR3AU_JZ_		W1CJC (AWD, INVECS-III CVT)	

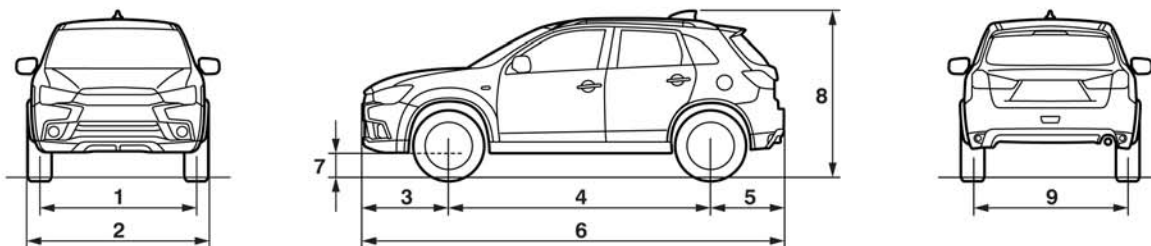
VEHICLES FOR CANADA

Model code		VIN (Except sequence number)	Engine model	Transaxle model	Fuel system
GA5W	XTFH2L3M	JA4AJ4AW_JZ_	4B12 [2,360 cm ³ (144.0 cu in) DOHC MIVEC gasoline engine]	W1CJC (AWD, INVECS-III CVT)	MFI

GENERAL DATA AND SPECIFICATIONS

M1001000910968

VEHICLES FOR USA



ACG01657AD

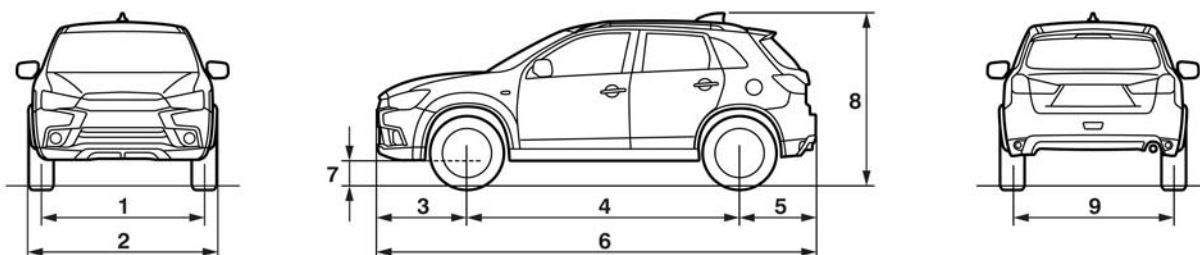
Item		GA2W		
			XTJHL2M	XTJH2L2M
Vehicle dimension mm (in)	Front track	1	1,525 (60.0) ^{*1} 1,540 (60.6) ^{*2}	1,525 (60.0) ^{*1} 1,540 (60.6) ^{*2}
	Overall width	2	1,810 (71.3)	1,810 (71.3)
	Front overhang	3	930 (36.6)	930 (36.6)
	Wheel base	4	2,670 (105.1)	2,670 (105.1)
	Rear overhang	5	765 (30.1)	765 (30.1)
	Overall length	6	4,365 (171.9)	4,365 (171.9)
	Ground clearance (unladen)	7	215 (8.5)	215 (8.5)
	Overall height (unladen)	8	1,645 (64.8)	1,645 (64.8)
	Rear track	9	1,525 (60.0) ^{*1} 1,540 (60.6) ^{*2}	1,525 (60.0) ^{*1} 1,540 (60.6) ^{*2}

Item			GA2W	
			XTJHL2M	XTJHZL2M
Vehicle weight kg (lb)	Curb weight	Without optional parts	1,410 (3,109)	1,475 (3,252)
		With optional parts	1,447 (3,190)	1,499 (3,305)
	Max. gross vehicle weight		1,970 (4,343)	1,970 (4,343)
	Max. axle weight rating-front		1,030 (2,271)	1,030 (2,271)
	Max. axle weight rating-rear		1,000 (2,205)	1,000 (2,205)
Seating capacity			5	5
Engine	Model code		4B11	4B11
	Type		DOHC MIVEC	DOHC MIVEC
	Piston displacement cm ³ (cu in)		1,998 (121.9)	1,998 (121.9)
	Maximum output kW/r/min (HP/r/min)		110/6,000 (148/6,000)	110/6,000 (148/6,000)
	Maximum torque N-m/r/min (ft-lb/r/min)		197/4,200 (145/4,200)	197/4,200 (145/4,200)
Fuel system	Fuel supply system		MFI	MFI
Transmission	Model code		F1CJC	W1CJC
	Type		FWD, INVECS-III CVT	AWD, INVECS-III CVT
Minimum turning radius m (ft)	Body		5.7 (18.7)	5.7 (18.7)
	Wheel		5.3 (17.4)	5.3 (17.4)

NOTE: *1: Vehicles without 18inch tire

*2: Vehicles with 18inch tire

VEHICLES FOR CANADA



ACG01657AD

Item		GA5W	
		XTFHZL3M	
Vehicle dimension mm (in)	Front track	1	1,540 (60.6)
	Overall width	2	1,810 (71.3)
	Front overhang	3	930 (36.6)
	Wheel base	4	2,670 (105.1)
	Rear overhang	5	765 (30.1)
	Overall length	6	4,365 (171.9)
	Ground clearance (unladen)	7	215 (8.5)
	Overall height (unladen)	8	1,645 (64.8)
	Rear track	9	1,540 (60.6)
Vehicle weight kg (lb)	Curb weight	Without optional parts	1,490 (3,285)
		With optional parts	1,544 (3,404)
	Max. gross vehicle weight		1,970 (4,343)
	Max. axle weight rating-front		1,030 (2,271)
	Max. axle weight rating-rear		1,000 (2,205)
Seating capacity			5
Engine	Model code		4B12
	Type		DOHC MIVEC
	Piston displacement cm ³ (cu in)		2,360 (144.0)
	Maximum output kW/r/min (HP/r/min)		125/6,000 (168/6,000)
	Maximum torque N-m/r/min (ft-lb/r/min)		226/4,100 (167/4,100)
Fuel system	Fuel supply system		MFI
Transmission	Model code		W1CJC
	Type		AWD, INVECS-III CVT
Minimum turning radius m (ft)	Body		5.7 (18.7)
	Wheel		5.3 (17.4)