

Product Upgrade Bulletin 190814REV



**UPGRADE
BULLETIN:
190814REV**

**YEAR(S)
AFFECTED:**
2015-2020

**PRODUCT(S)
AFFECTED:**
American Coach Brand:
2015 American Eagle
2015-2016 American
Heritage
2015-2016 American
Tradition
2016 American Allegiance
2016-2019 American
Dream
2017-2018 American
Revolution
2020 American Revolution

Monaco Brand:
2018-2019 Marquis
2018-2019 Signature

**MODEL(S)
AFFECTED:**
All

SUBJECT:
Inspection/
Correction of
Rear Air Deflector
Fasteners

KEYWORDS:
Air Deflector,
Spoiler, Wing

ISSUE DATE:
September 2019

© 2019 REV Recreation Group Inc.

The purpose of this Product Upgrade Service Bulletin is to inform all REV Recreation Group dealers about the need to inspect, and if necessary, replace and supplement the existing fasteners attaching the rear air deflector on certain model year 2015-2020 American Coach brand and certain model year 2018-2019 Monaco brand Class A diesel motorhomes. A list of affected vehicles appears at the end of this bulletin.

CONDITION:

On motorhomes affected by this Product Upgrade, the rear air deflector, mounted to the rear fiberglass cap, was attached with a series of brackets and screws. The brackets used in this application had slots in certain areas where they attached to the cap. Over time, these brackets could shift or slide within the confines of the slots. This movement can cause the rear air deflector to become slightly misaligned.

PROCEDURES:



Dealers are required to call REV Dealer Technical Support to obtain Prior Authorization before beginning any work and after the unit is in their bay. You will receive instructions and will be provided any necessary part ordering information.

**American Coach Dealer Technical Support: (800) 417-6413
Monaco Dealer Technical Support: (877) 332-9239**

- **READ THIS ENTIRE BULLETIN CAREFULLY BEFORE PROCEEDING AND FOLLOW ALL SAFETY PRECAUTIONS.**

- **Review the list of affected units at the end of this bulletin to ensure the motorhome you are inspecting is part of this campaign.**

- **Take a copy of this bulletin with you when servicing the unit.**



- **PHOTOS WILL BE REQUIRED FOR THE FOLLOWING PROCEDURES. READ PHOTO REQUIREMENTS CAREFULLY. INSUFFICIENT PHOTO DOCUMENTATION MAY RESULT IN CLAIM DENIAL.**

- **If there are any questions after reviewing the entire procedure, contact REV Dealer Technical Support.**

1. Park the motorhome on dry, level pavement. Place the transmission into NEUTRAL and engage the parking brake.
2. Turn off the ignition and remove the ignition key. Maintain control of ignition keys while work is performed. Attach a notice "DO NOT USE" to the ignition switch in order to prevent activation of the systems or starting of the motorhome
3. Block wheels to prevent movement.

This bulletin is supplied for technical information only and is not an authorization for repairs.

"It is impossible to know, evaluate and advise the service trade of all conceivable ways in which service might be done or of the possible hazardous consequences of each way. Accordingly, anyone who uses a service procedure or tool must first assure that neither personal safety nor vehicle safety will be jeopardized by the selected service methods."

! WARNING

- **HEED ALL PRECAUTIONS AND USE APPROPRIATE PERSONAL PROTECTIVE EQUIPMENT TO AVOID INJURY.**
- **USE FALL PROTECTION WHEN WORKING ON THE ROOF OF A MOTORHOME.**

4. With the properly sized ladder and appropriate safety equipment, go on to the roof of the motorhome and locate the rear air deflector. See Figure 1. While working on the roof, verify there is adequate overhead clearance and the proper fall protection is used.
5. Once on the roof, locate the rear air deflector mounting brackets on the top of the rear cap. See illustration in Figure 2 for location details; the rear air deflector is shown separated for clarification. **NOTE:** The bracket locations labeled A-F will be referenced in some of the subsequent steps.



Figure 1

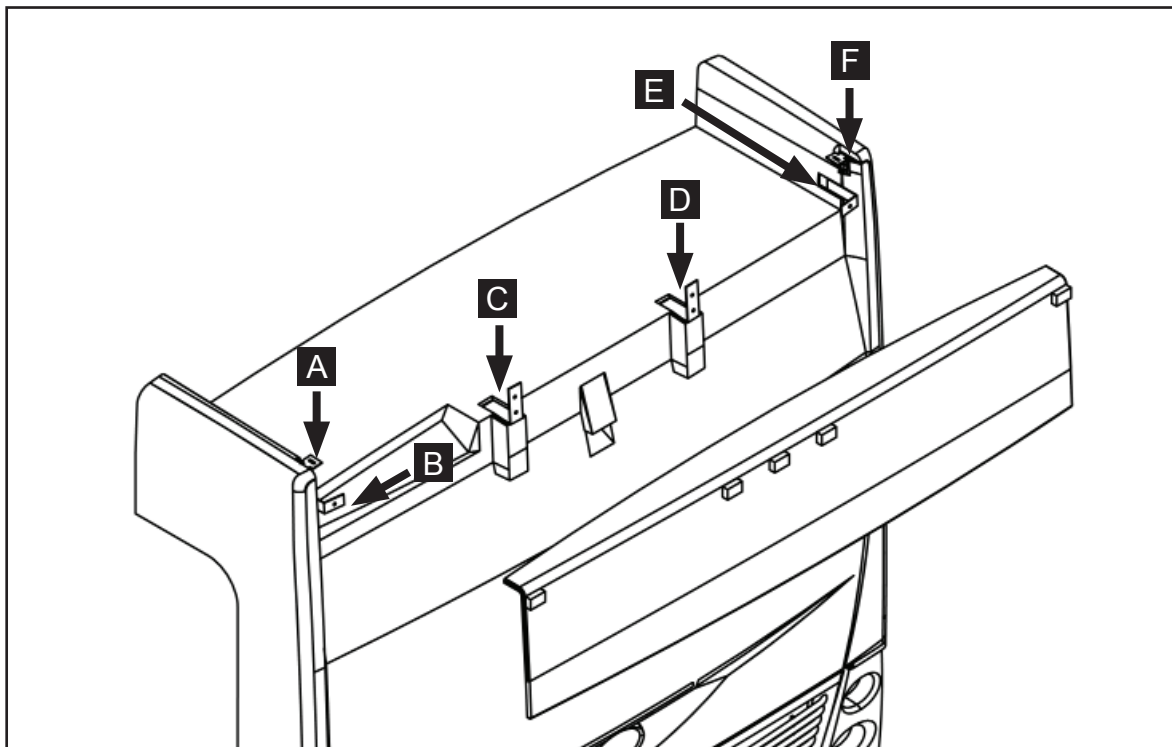


Figure 2

6. Inspect the fasteners used to secure the rear air deflector to the fiberglass cap; if there are rivets located in the slotted holes, take photos of the fasteners and submit a claim using flat rate code 6087-11, Inspected/Not Defective. If no rivets are found, proceed to Step 7.

This bulletin is supplied for technical information only and is not an authorization for repairs.

"It is impossible to know, evaluate and advise the service trade of all conceivable ways in which service might be done or of the possible hazardous consequences of each way. Accordingly, anyone who uses a service procedure or tool must first assure that neither personal safety nor vehicle safety will be jeopardized by the selected service methods."

7. If the rear air deflector is loose or misaligned, loosen the mounting screws and adjust the rear air deflector into its proper position with the vertical fiberglass surface aligned with the main rear fiberglass cap, see Figure 3.

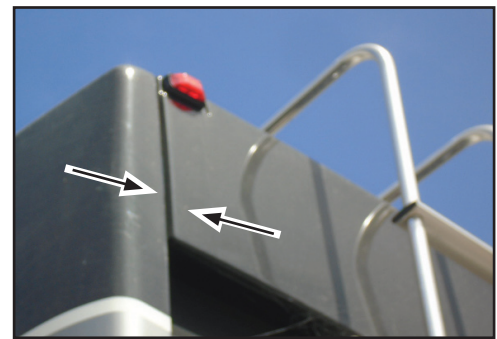


Figure 3

8. Once the rear air deflector is in its correct location and the mounting brackets are properly seated in the recessed pockets in the rear fiberglass cap; see Figures 4 and 5. Remove the existing fasteners at bracket locations B, C, D, and E and replace them with 1/4" x 1" HWH screws and a 1/4" plated flat washer. (See Parts list.) **Replace the fasteners one bracket at a time so that the rear air deflector stays solidly affixed to the coach throughout the repair. No brackets will be replaced; only the fasteners will be replaced.**

See Figure 5 for an example of the corrected fasteners.

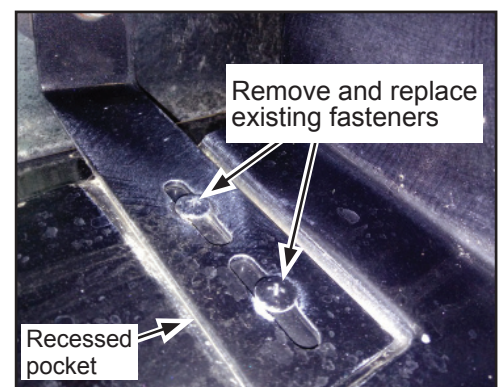


Figure 4



Figure 5

Continued on next page

This bulletin is supplied for technical information only and is not an authorization for repairs.

"It is impossible to know, evaluate and advise the service trade of all conceivable ways in which service might be done or of the possible hazardous consequences of each way. Accordingly, anyone who uses a service procedure or tool must first assure that neither personal safety nor vehicle safety will be jeopardized by the selected service methods."

9. With the other fasteners replaced and tight, remove the (2) screws on the upper vertical surface mounting points, positions A and F; replace with new 1/4" x 1" HWH screws. See Figures 6 and 7.

NOTE: Because they are not slotted, these locations should be done last; they could shift if the other brackets are not first properly secured.



Figure 6

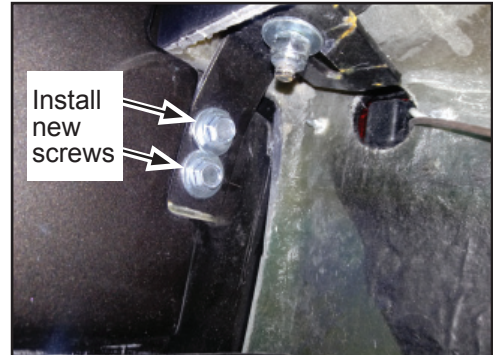


Figure 7

10. Once all fasteners have been replaced, use a #5 drill bit and bore a hole through the mounting bracket and the fiberglass cap in the center of the brackets C & D as shown in Figure 8. Install a 3/16" Molly/Oscar style rivet in this new hole to lock the bracket from moving.



Figure 8

Continued on next page

This bulletin is supplied for technical information only and is not an authorization for repairs.

"It is impossible to know, evaluate and advise the service trade of all conceivable ways in which service might be done or of the possible hazardous consequences of each way. Accordingly, anyone who uses a service procedure or tool must first assure that neither personal safety nor vehicle safety will be jeopardized by the selected service methods."

11. On brackets B & E, there is not adequate room to place the rivet between the slots. On these brackets, you will need to use a #5 drill bit to drill two new holes *inside* the existing slots in order to lock the brackets from moving. These rivet locations will vary depending on where the screws were positioned by the factory. See Figures 9-11 for recommended rivet locations based on screw placement; see Figure 12 for an example of a completed unit.

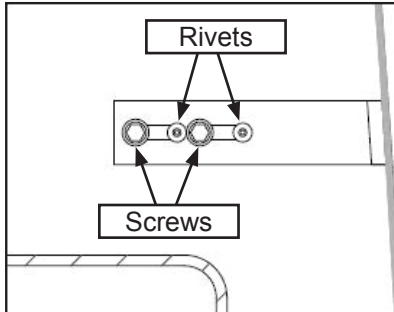


Figure 9

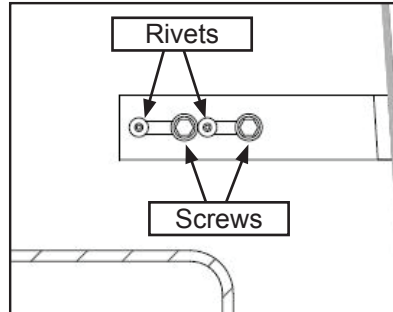


Figure 10

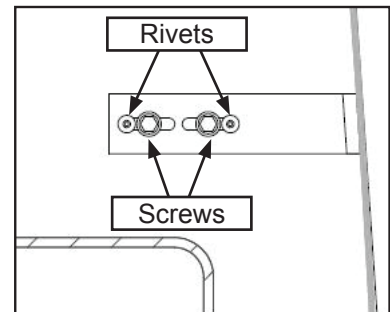


Figure 11

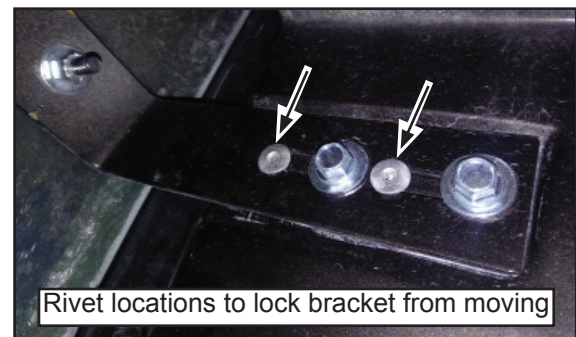


Figure 12

12. With all the new fasteners in place, verify that all of the 1/4"-20 studs used to mount the rear air deflector to the brackets are correctly torqued to 40 in-lbs. If lock nuts are not present, apply Loctite® Threadlocker Blue 242® before tightening the fasteners.
13. Upon completion of work, take several clear photos and submit a claim using flat rate code 6087-12, Inspected/Defective/Repaired.

This bulletin is supplied for technical information only and is not an authorization for repairs.

"It is impossible to know, evaluate and advise the service trade of all conceivable ways in which service might be done or of the possible hazardous consequences of each way. Accordingly, anyone who uses a service procedure or tool must first assure that neither personal safety nor vehicle safety will be jeopardized by the selected service methods."

PARTS:

Purchase through REV Parts or obtain locally:

<u>Part Number</u>	<u>Description</u>	<u>Qty.</u>
10007847	3/16" Oscar/Molly style rivets (pictured at right)	8
10089470	1/4"-20 x 1" HWH self-drilling screw	12
10089425	1/4" USS flat washer	12



Oscar/Molly style rivet

Obtain locally:

Loctite® Threadlocker Blue 242®

TOOLS:

Power driver	Rivet tool
Driver bits	Wheel chocks
#5 Drill Bit	Moveable Stairs or Ladder
Torque wrench (inch pounds)	Fall protection equipment
3/8" Socket	

WARRANTY LABOR ALLOWANCE:

Upgrade 190814REV, Rear Wing Fastener Upgrade

Use flat rate codes:

6087 - 11	Inspected/Not Defective	0.1 hr.	Prior Authorization Required
6087 - 12	Inspected/Defective/Repaired	0.5 hr.	Prior Authorization Required

*If you have any questions concerning this bulletin, contact
REV Dealer Technical Support:*

**American Coach Dealer Technical Support: (800) 417-6413
Monaco Dealer Technical Support: (877) 332-9239**

Service Literature is available at: <http://www.revrvdealers.com>

This bulletin is supplied for technical information only and is not an authorization for repairs.

"It is impossible to know, evaluate and advise the service trade of all conceivable ways in which service might be done or of the possible hazardous consequences of each way. Accordingly, anyone who uses a service procedure or tool must first assure that neither personal safety nor vehicle safety will be jeopardized by the selected service methods."

**Product Upgrade 190814REV
Affected American Coach Serial Numbers**

2016 American Allegiance

UIN	Chassis / VIN	Model
771GG4419320	4UZFCGCY1FCGP7799	42 G
771AG4419762	4UZACGCY4FCGT0020	39 A
771GG4419907	4UZFCGCY7FCGU7108	42 G
771AG4419959	4UZACGCY6FCGU7109	39 A
771GG4420078	4UZFCGCY8FCGY0120	42 G
771GG4420083	4UZFCGCY7FCGW3812	42 G
771GG4420157	4UZFCGCY2FCGZ1727	42 G
771AG4420173	4UZACGCY4FCGW9609	39 A
771GG4420174	4UZFCGCY5FCGY4626	42 G
771GG4420329	4UZFCGCY4FCGZ1728	42 G
771GG4420333	4UZFCGCY6FCGZ1729	42 G
771GG4420411	4UZFCGCY8FCGZ8598	42 G
771GG4420420	4UZFCGCYXFCGZ8599	42 G
771TG4420543	4UZFCGCY3FCHA8496	42 T
771TG4420556	4UZFCGCY5FCHA8497	42 T
771AG4420657	4UZACGCY7FCGY0121	39 A
771TG4420662	4UZFCGCY7FCHA8498	42 T
771TG4420735	4UZFCGCY9FCHB5128	42 T
771TG4420744	4UZFCGCY0FCHB5129	42 T
771TG4420801	4UZFCGCY1GCHE6830	42 T
771AG4420805	4UZACGCYXFCGY4633	39 A
771AG4420883	4UZACGCY1FCGY4634	39 A
771TG4420888	4UZFCGCY3GCHE6831	42 T
771AG4420941	4UZACGCYXFCGZ1730	39 A
771AG4420943	4UZACGCYXFCGZ8600	39 A
771TG4420945	4UZFCGCY5GCHE6832	42 T
771AG4421001	4UZACGCY6GCHH0549	39 A
771GG4421003	4UZFCGCYXGCHF2996	42 G
771TG4421005	4UZFCGCY1GCHF2997	42 T
771GG4421048	4UZFCGCY7GCHE6833	42 G
771GG4421084	4UZFCGCY5GCHG1511	42 G
771TG4421090	4UZFCGCY5GCHH0547	42 T
771TG4421188	4UZFCGCY7GCHH0548	42 T
771TG4421243	4UZFCGCY7GCHH5717	42 T
771TG4421274	4UZFCGCY9GCHH5718	42 T
771AG4421322	4UZACGCY2GCHH0550	39 A
771GG4421409	4UZFCGCY0GCHH5719	42 G
771GG4421443	4UZFCGCY3GCHH7626	42 G
771GG4421523	4UZFCGCY5GCHH7627	42 G
771AG4421568	4UZACGCY6GCHH5721	39 A

**Product Upgrade 190814REV
Affected American Coach Serial Numbers**

2016 American Allegiance

UIN	Chassis / VIN	Model
771TG4421631	4UZFCGKY5GCHL8704	42 T
771TG4421811	4UZFCGKY7GCHH7628	42 T
771TG4421931	4UZFCGKY7GCHJ3867	42 T
771TG4421936	4UZFCGKY9GCHJ3868	42 T
771AG4421986	4UZACGKY8GCHH5722	39 A
771AG4421992	4UZACGKYXGCHH5723	39 A
771AG4422143	4UZACGKY6GCHH7632	39 A

2016 American Dream

UIN	Chassis / VIN	Model
720TG4422088	4UZFCGBG5GCHN5348	45 T
720MG4422098	4UZFCGKY0GCHP9984	42 M
720AG4422231	4UZFCGBG4GCHP4036	45 A
720TG4422406	4UZFCGBG6GCHP9982	45 T
720AG4422517	4UZFCGBG2GCHS0962	45 A
720MG4422610	4UZFCGKY2GCHR4101	42 M
720AG4422661	4UZFCGBG2GCHU9250	45 A
720TG4422865	4UZFCGBG6GCHU1314	45 T
720AG4422937	4UZFCGBG3GCHV4182	45 A
720MG4422943	4UZFCGKY4GCHR4102	42 M
720TG4422962	4UZFCGBG5GCHW0405	45 T
720AG4422970	4UZFCGBG7GCHW0406	45 A
720TG4423063	4UZFCGBG4GCHW3697	45 T
720TG4423066	4UZFCGBG1GCHM7148	45 T
720MG4423123	4UZFCGKY4GCHV8491	42 M

2017 American Dream

UIN	Chassis / VIN	Model
720TH4423197	4UZFCGBG6GCHW3698	45 T
720AH4423238	4UZFCGBG8GCHW3976	45 A
720TH4423241	4UZFCGBGXGCHW3977	45 T
720AH4423348	4UZFCGBG1GCHW3978	45 A
720GH4423399	4UZFCGKY1GCHW6788	42 G
720AH4423471	4UZFCGBG6GCHW7539	45 A
720AH4423487	4UZFCGBG0FCGX5048	45 A
720TH4423490	4UZFCGBG3FCGY4617	45 T
720AH4423540	4UZFCGBG5FCGY4618	45 A
720AH4423543	4UZFCGBG9GCHE0069	45 A
720GH4423552	4UZFCGKY3GCHY3902	42 G
720GH4423618	4UZFCGKY5HCHZ5194	42 G
720AH4423641	4UZFCGBG0GCHY6023	45 A
720AH4423732	4UZFCGBG2GCHY6024	45 A

**Product Upgrade 190814REV
Affected American Coach Serial Numbers**

2017 American Dream

UIN	Chassis / VIN	Model
720MH4423826	4UZFCGCY5HCHZ8399	42 M
720MH4423831	4UZFCGCY7HCHZ5195	42 M
720MH4424063	4UZFCGCY8HCHZ8400	42 M
720TH4424067	4UZFCGBG6HCHZ1289	45 T
720TH4424138	4UZFCGBG2HCHZ1290	45 T
720GH4424149	4UZFCGCYXHCHZ8401	42 G
720AH4424164	4UZFCGBG8HCHZ3416	45 A
720AH4424169	4UZFCGBGXHCHZ3417	45 A
720AH4424250	4UZFCGBG8HCHZ5196	45 A
720AH4424319	4UZFCGBG1HCJB8807	45 A
720TH4424388	4UZFCGBGXHCJC0703	45 T
720MH4424396	4UZFCGCY0HCJB8806	42 M
720TH4424459	4UZFCGBG3HCJC3054	45 T
720TH4424516	4UZFCGBG2HCJC5863	45 T
720AH4424577	4UZFCGBG4HCJC5864	45 A
720AH4424592	4UZFCGBG7HCJC7642	45 A
720TH4424658	4UZFCGBG4HCJD2894	45 T
720MH4424664	4UZFCGCY6HCJC7641	42 M
720TH4424714	4UZFCGBG1HCJC0704	45 T
720AH4424715	4UZFCGBG6HCJC5865	45 A
720TH4424793	4UZFCGBG9HCJC7643	45 T
720TH4424863	4UZFCGBGXHCJC8431	45 T
720TH4424864	4UZFCGBG1HCJC8432	45 T
720TH4424866	4UZFCGBG2HCJD2893	45 T
720AH4424938	4UZFCGBG6HCJD2895	45 A
720TH4424940	4UZFCGBG8HCJD2896	45 T
720TH4425055	4UZFCGBG4HCJD5214	45 T
720AH4425057	4UZFCGBG6HCJD5215	45 A
720AH4425127	4UZFCGBG9HCJD6147	45 A
720TH4425129	4UZFCGBG0HCJD6148	45 T
720AH4425183	4UZFCGBG2HCJD6149	45 A
720TH4425185	4UZFCGBG9HCJD6150	45 T
720AH4425187	4UZFCGBG5HCJE1734	45 A
720AH4425321	4UZFCGBG7HCJE1735	45 A
720GH4425323	4UZFCGCYXHCJD1109	42 G
720AH4425395	4UZFCGBGXHCJE2930	45 A
720TH4425399	4UZFCGBG1HCJE2931	45 T
720GH4425811	4UZFCGCY9HCJF7295	42 G
720AH4425951	4UZFCGBG5HCJD1110	45 A
720AH4425955	4UZFCGBG3HCJE2932	45 A
720AH4426024	4UZFCGBG7HCJE4408	45 A
720AH4426092	4UZFCGBG9HCJE4409	45 A
720TH4426159	4UZFCGBG5HCJE4410	45 T

**Product Upgrade 190814REV
Affected American Coach Serial Numbers**

2017 American Dream

UIN	Chassis / VIN	Model
720TH4426283	4UZFCGBG7HCJE4411	45 T
720TH4426423	4UZFCGBG9HCJE4412	45 T
720AH4426493	4UZFCGBG5HCJE7310	45 A
720TH4426497	4UZFCGBG7HCJE7311	45 T
720MH4426567	4UZFCG2HCJF8675	42 M
720TH4426570	4UZFCGBG9HCJE7312	45 T
720AH4426640	4UZFCGBG0HCJE7313	45 A
720AH4426718	4UZFCGBG8HCJF1271	45 A

2018 American Dream

UIN	Chassis / VIN	Model
720TJ4426796	4UZFCGBG6GCHW3975	45 T
720AJ4426812	4UZFCGFG4JCJD3088	45 A
720GJ4426927	4UZFCGFE8JCJD3089	42 G
720AJ4427008	4UZFCGBG3HCJM5317	45 A
720AJ4427083	4UZFCGFG2JCJN1755	45 A
720TJ4427235	4UZFCGFG4JCJN1756	45 T
720AJ4427315	4UZFCGFG6JCJN1757	45 A
720TJ4427382	4UZFCGFG1JCJP4105	45 T
720GJ4427384	4UZFCG2HCJF8676	42 G
720AJ4427457	4UZFCGFG3JCJP4106	45 A
720GJ4427529	4UZFCGFE0JCJR3260	42 G
720AJ4427531	4UZFCGFG5JCJP6634	45 A
720AJ4427605	4UZFCGFG0JCJR3258	45 A
720TJ4427679	4UZFCGFG6JCJR6794	45 T
720TJ4427753	4UZFCGFG8JCJR6795	45 T
720AJ4427755	4UZFCGFG1JCJS7415	45 A
720AJ4427830	4UZFCGFG4JCJT0373	45 A
720TJ4427906	4UZFCGFG1JCJT7331	45 T
720AJ4427986	4UZFCGFG1JCJT9905	45 A
720TJ4428061	4UZFCGFG6JCJU2721	45 T
720GJ4428135	4UZFCGFE7JCJT9907	42 G
720GJ4428215	4UZFCGFE5JCJT9906	42 G
720AJ4428217	4UZFCGFG8JCJU2722	45 A
720AJ4428288	4UZFCGFG9JCJU5225	45 A
720TJ4428362	4UZFCGFG0JCJU5226	45 T

**Product Upgrade 190814REV
Affected American Coach Serial Numbers**

2019 American Dream

UIN	Chassis / VIN	Model
778LK4430162	4UZACGFE5JCJZ4981	40 L
778LK4430231	4UZACGFE7JCJZ4982	40 L
778MK4430298	4UZFCGFE6JCKB2969	44 M
778MK4430366	4UZFCGFE2JCKF8637	44 M
778MK4430507	4UZFCGFE9JCKF9011	44 M
778LK4430867	4UZACGFE1JCKM0483	40 L
778MK4430938	4UZFCGFE2JCKM0482	44 M
720SK4431496	4UZFCGFE2KCKT9639	42 S
720QK4431545	4UZFCGFE7KCKU8854	42 Q
720BK4431604	4UZFCGFE6KCKV7710	42 B
720AK4431638	4UZFCGFG9KCKV3085	45 A
720SK4431701	4UZFCGFE1KCKW0787	42 S
720AK4431764	4UZFCGFG1KCKW4887	45 A
720SK4431833	4UZFCGFE9KCKX4503	42 S
720QK4431888	4UZFCGFE2KCKX9011	42 Q
720AK4431942	4UZFCGFG9KCKY1162	45 A
720QK4431987	4UZFCGFE9KCKY3993	42 Q
720SK4432037	4UZFCGFE0KCKY3994	42 S
720AK4432095	4UZFCGFG0KCLD4357	45 A
720SK4432097	4UZFCGFE6KCLD4409	42 S
720AK4432149	4UZFCGFG2KCLF4951	45 A
720BK4432153	4UZFCGFE6KCLF4952	42 B
720AK4432205	4UZFCGFG9KCLG4327	45 A
720BK4432207	4UZFCGFE2KCLG8072	42 B
720SK4432239	4UZFCGFE2KCLG4328	42 S
720QK4432288	4UZFCGFE8KCLH6483	42 Q
720AK4432290	4UZFCGFG4KCLH6482	45 A
720AK4432344	4UZFCGFGXKCLJ4153	45 A
720BK4432388	4UZFCGFE3KCLJ4154	42 B
720AK4432452	4UZFCGFG7KCLJ8385	45 A
720QK4432455	4UZFCGFE5KCLJ8383	42 Q
720BK4432508	4UZFCGFE6KCLL3085	42 B
720AK4432510	4UZFCGFG2KCLL3084	45 A
720AK4432573	4UZFCGFG1KCLL6011	45 A
720BK4432657	4UZFCGFE5KCLL6012	42 B
720AK4432681	4UZFCGFG9KCLN8144	45 A
720SK4432683	4UZFCGFE5KCLM1274	42 S
720QK4432685	4UZFCGFE8KCLM5335	42 Q
720AK4432742	4UZFCGFG5KCLP2235	45 A
720AK4432794	4UZFCGFG7KCLP2236	45 A
720SK4432796	4UZFCGFE2KCLN8260	42 S
720QK4432798	4UZFCGFE4KCLN8261	42 Q
720QK4432850	4UZFCGFE5KCLP7630	42 Q
720AK4432906	4UZFCGFG0KCLR3932	45 A

**Product Upgrade 190814REV
Affected American Coach Serial Numbers**

2019 American Dream

UIN	Chassis / VIN	Model
720SK4432908	4UZFCGFE2KCLP2238	42 S
720AK4432931	4UZFCGFG4KCLS4533	45 A
720BK4432933	4UZFCGFE9KCLP7629	42 B
720BK4432989	4UZFCGFE0KCLP2237	42 B
720SK4433010	4UZFCGFE0KCLS1238	42 S
720SK4433012	4UZFCGFE8KCLS4534	42 S
720AK4433060	4UZFCGFG3KCLS7892	45 A
720AK4433114	4UZFCGFG6KCLT1712	45 A
720SK4433171	4UZFCGFEXKCLS4535	42 S
720AK4433315	4UZFCGFG3KCLU1663	45 A

2015 American Eagle

UIN	Chassis / VIN	Model
719AF4416502	4UZFCGBGXECFZ6081	45 A
719NF4416590	4UZFCGDV8ECFZ8696	45 N
719TF4416662	4UZFCGBGXECGA5728	45 T
719AF4416726	4UZFCGBG3ECGA9992	45 A
719NF4416732	4UZFCGBG1ECGA9991	45 N
719BF4416832	4UZFCGBG1ECGA5729	45 B
719NF4417275	4UZFCGBG8ECGB7652	45 N
719TF4417515	4UZFCGDV0ECGA3207	45 T
719TF4417520	4UZFCGDV0ECGA6009	45 T
719TF4417615	4UZFCGDV7ECGA6010	45 T
719BF4417685	4UZFCGBG5FCGG7488	45 B
719TF4417758	4UZFCGDV9FCGG0247	45 T
719NF4417762	4UZFCGBG8ECGD0546	45 N
719TF4417772	4UZFCGBG1FCGE3222	45 T
719BF4417878	4UZFCGBG3FCGH6383	45 B
719NF4417887	4UZFCGBG3FCGG7490	45 N
719BF4417896	4UZFCGDV0FCGG0248	45 B
719NF4418015	4UZFCGBG5FCGG7491	45 N
719TF4418366	4UZFCGBG8FCGJ8029	45 T
719AF4418438	4UZFCGBG1FCGK0575	45 A
719AF4418493	4UZFCGBG3FCGK0576	45 A
719AF4418528	4UZFCGBG8FCGL5624	45 A
719AF4418609	4UZFCGBGXFCGL5625	45 A
719AF4418793	4UZFCGBG1FCGL5626	45 A
719TF4418850	4UZFCGBG3FCGL5627	45 T
719TF4419003	4UZFCGBG2FCGM0673	45 T
719BF4419147	4UZFCGBG7FCGG7492	45 B
719TF4419155	4UZFCGBG0FCGM9890	45 T
719TF4419378	4UZFCGDV8FCGH8836	45 T
719NF4419431	4UZFCGDV0FCGK0577	45 N
719AF4419565	4UZFCGBG1FCGT5660	45 A
719TF4419678	4UZFCGDV2FCGK0578	45 T

**Product Upgrade 190814REV
Affected American Coach Serial Numbers**

2015 American Heritage

UIN	Chassis / VIN	Model
782AF4416583	4UZFCGBG1ECFZ6082	45 A
782TF4416722	4UZFCGBG3ECGA3206	45 T
782TF4416930	4UZFCGBG1ECGB5452	45 T
782TF4417056	4UZFCGBG3ECGB5453	45 T
782TF4417201	4UZFCGBG6ECGB7651	45 T
782NF4417508	4UZFCGBG3ECGC2838	45 N
782TF4417676	4UZFCGBG1ECGC2840	45 T
782TF4418248	4UZFCGBG5ECGC2839	45 T
782TF4419077	4UZFCGBG4FCGM0674	45 T
782NF4419222	4UZFCGBG0FCGN1266	45 N
782TF4419370	4UZFCGBG2FCGN7702	45 T
782TF4419509	4UZFCGBG4FCGR7926	45 T
782TF4419955	4UZFCGBGXFCGV2456	45 T

2016 American Heritage

UIN	Chassis / VIN	Model
782AG4420175	4UZFCGBG2FCGW0468	45 A
782TG4420319	4UZFCGBG2FCGW9543	45 T
782TG4420415	4UZFCGBG3FCGZ8596	45 T
782AG4420659	4UZFCGBG4FCHB5126	45 A
782CG4421271	4UZFCGBG0GCHH7625	45 C
782TG4421806	4UZFCGBG9GCHL6883	45 T

2017 American Revolution

UIN	Chassis / VIN	Model
781SH4423546	4UZFCGKY1GCHW7505	42 S
781DH4423549	4UZFCGKY3GCHW7506	42 D
781DH4424056	4UZFCGKY3HCHZ7378	42 D
781SH4424060	4UZFCGKY3HCHZ9051	42 S
781SH4424175	4UZFCGKY4HCHZ9690	42 S
781SH4424256	4UZFCGKY8HCHZ9689	42 S
781SH4424258	4UZFCGKY4HCJB7433	42 S
781QH4424262	4UZFCGKY4HCJB8808	42 Q
781QH4424324	4UZFCGKY2HCJB8810	42 Q
781QH4424330	4UZFCGKY6HCJB8809	42 Q
781QH4424391	4UZFCGKY6HCJC0706	42 Q
781GH4424399	4UZFCGKY8HCJC0707	42 G
781SH4424402	4UZFCGKY4HCJB8811	42 S
781SH4424465	4UZFCGKY1HCJC0709	42 S
781GH4424468	4UZFCGKY6HCJC3055	42 G
781GH4424471	4UZFCGKY8HCJC3056	42 G
781QH4424507	4UZFCGKY9HCJC5866	42 Q
781SH4424510	4UZFCGKY0HCJC5867	42 S

**Product Upgrade 190814REV
Affected American Coach Serial Numbers**

2017 American Revolution

UIN	Chassis / VIN	Model
781QH4424513	4UZFCGCY2HCJC5868	42 Q
781DH4424519	4UZFCGCY4HCJC5869	42 D
781SH4424589	4UZFCGCY4HCJC8433	42 S
781GH4424649	4UZFCGCY4HCJC0705	42 G
781SH4424652	4UZFCGCY8HCJD1111	42 S
781DH4424661	4UZFCGCYXHCJD1112	42 D
781SH4424716	4UZFCGCY1HCJD1113	42 S
781QH4424722	4UZFCGCY0HCJD2897	42 Q
781GH4424729	4UZFCGCY2HCJD2898	42 G
781DH4424775	4UZFCGCY9HCJD5216	42 D
781QH4424778	4UZFCGCY0HCJD5217	42 Q
781PH4424781	4UZFCGCY2HCJD5218	42 P
781SH4424786	4UZFCGCY4HCJD5219	42 S
781SH4424790	4UZFCGCY0HCJD5220	42 S
781SH4424843	4UZFCGCY1HCJD6151	42 S
781QH4424850	4UZFCGCY3HCJD6152	42 Q
781GH4424857	4UZFCGCY5HCJD6153	42 G
781QH4424860	4UZFCGCY7HCJD6154	42 Q
781QH4424917	4UZFCGCY5HCJD7626	42 Q
781QH4424921	4UZFCGCY7HCJD7627	42 Q
781SH4424929	4UZFCGCY9HCJD7628	42 S
781DH4424933	4UZFCGCY0HCJD7629	42 D
781DH4425039	4UZFCGCY6HCJC8434	42 D
781QH4425047	4UZFCGCY7HCJD7630	42 Q
781DH4425098	4UZFCGCY1HCJE0555	42 D
781SH4425102	4UZFCGCY9HCJE1713	42 S
781QH4425105	4UZFCGCY0HCJE1714	42 Q
781BH4425167	4UZACGCY4HCJE1712	39 B
781DH4425175	4UZFCGCY2HCJE1715	42 D
781QH4425320	4UZFCGCY3HCJE0556	42 Q
781SH4425322	4UZFCGCY6HCJE1717	42 S
781QH4425324	4UZFCGCY4HCJE1716	42 Q
781QH4425394	4UZFCGCY6HCJE2933	42 Q
781QH4425396	4UZFCGCY8HCJE2934	42 Q
781QH4425398	4UZFCGCYXHCJE2935	42 Q
781PH4425649	4UZFCGCYXHCJC0708	42 P
781SH4425696	4UZFCGCY9HCJD6155	42 S
781PH4425698	4UZFCGCY4HCJD2899	42 P
781PH4425700	4UZFCGCY1HCJE2936	42 P
781SH4425745	4UZFCGCY3HCJE2937	42 S
781PH4425748	4UZFCGCY5HCJE2938	42 P
781PH4425808	4UZFCGCY1HCJE4413	42 P
781PH4425810	4UZFCGCY3HCJE4414	42 P

**Product Upgrade 190814REV
Affected American Coach Serial Numbers**

2017 American Revolution

UIN	Chassis / VIN	Model
781DH4425812	4UZFCGCY5HCJE4415	42 D
781BH4425885	4UZACGCY3HCJF7304	39 B
781PH4425886	4UZFCGCY7HCJE4416	42 P
781GH4425888	4UZFCGCY4HCJF1274	42 G
781QH4425952	4UZFCGCY6HCJF1275	42 Q
781PH4425954	4UZFCGCY5HCJF2871	42 P
781PH4425956	4UZFCGCY7HCJF2872	42 P
781BH4426020	4UZACGCY8HCJG0926	39 B
781BH4426023	4UZACGCY3HCJH6967	39 B
781PH4426087	4UZFCGCY9HCJF2873	42 P
781QH4426089	4UZFCGCY0HCJF2874	42 Q
781PH4426091	4UZFCGCY2HCJF2875	42 P
781QH4426158	4UZFCGCY4HCJF2876	42 Q
781GH4426160	4UZFCGCY0HCJF7296	42 G
781GH4426219	4UZFCGCY2HCJF7297	42 G
781QH4426221	4UZFCGCY2HCJH6965	42 Q
781SH4426282	4UZFCGCY4HCJH6966	42 S
781BH4426284	4UZACGCY9HCJH9677	39 B
781PH4426348	4UZFCGCY5HCJH9651	42 P
781QH4426349	4UZFCGCY7HCJH9652	42 Q
781GH4426351	4UZFCGCY9HCJH9653	42 G
781GH4426420	4UZFCGCY0HCJH9654	42 G
781PH4426422	4UZFCGCY2HCJK1694	42 P
781QH4426492	4UZFCGCY4HCJK1695	42 Q
781BH4426494	4UZACGCY9HCJK1699	39 B
781GH4426496	4UZFCGCY6HCJK1696	42 G
781QH4426566	4UZFCGCY8HCJK1697	42 Q
781PH4426568	4UZFCGCYXHCJK1698	42 P
781GH4426569	4UZFCGCY1HCJK4280	42 G
781QH4426571	4UZFCGCY3HCJK4281	42 Q
781SH4426641	4UZFCGCY5HCJK8381	42 S
781BH4426643	4UZACGCY1HCJK1700	39 B
781PH4426644	4UZFCGCY3HCJL0971	42 P
781GH4426719	4UZFCGFEXJCJD3093	42 G
781QH4426793	4UZFCGCY5HCJL0972	42 Q
781BH4426795	4UZACGCY4HCJL3517	39 B

**Product Upgrade 190814REV
Affected American Coach Serial Numbers**

2018 American Revolution

UIN	Chassis / VIN	Model
781QJ4426808	4UZFCGCY0HCJM2169	42 Q
781SJ4426810	4UZFCGCY9HCJM2168	42 S
781QJ4426811	4UZFCGCY7HCJM2167	42 Q
781PJ4426813	4UZFCGCY7HCJM2170	42 P
781QJ4426923	4UZFCGCY9HCJM2171	42 Q
781QJ4426925	4UZFCGCY0HCJM2172	42 Q
781QJ4426926	4UZFCGCY2HCJM2173	42 Q
781QJ4426928	4UZFCGCY4HCJM2174	42 Q
781QJ4427079	4UZFCGCY6HCJM2175	42 Q
781QJ4427082	4UZFCGCY8HCJM2176	42 Q
781GJ4427155	4UZFCGCY2HCJN1746	42 G
781SJ4427157	4UZFCGCY4HCJN1747	42 S
781PJ4427159	4UZFCGCY6HCJN1748	42 P
781GJ4427233	4UZFCGCY8HCJN1749	42 G
781GJ4427311	4UZFCGCY4HCJN1750	42 G
781BJ4427313	4UZACGCY4HCJM8759	39 B
781QJ4427314	4UZFCGCY6HCJN1751	42 Q
781QJ4427380	4UZFCGCYXHCJN1753	42 Q
781GJ4427383	4UZFCGCY8HCJN1752	42 G
781BJ4427453	4UZACGFE4JCJP4107	39 B
781QJ4427455	4UZFCGCY1HCJN1754	42 Q
781PJ4427456	4UZFCGCY9HCJP1590	42 P
781PJ4427458	4UZFCGCY0HCJP1591	42 P
781GJ4427528	4UZFCGCY2HCJP1592	42 G
781QJ4427530	4UZFCGCY4HCJP1593	42 Q
781PJ4427532	4UZFCGCY6HCJP1594	42 P
781SJ4427601	4UZFCGCY8HCJP1595	42 S
781GJ4427603	4UZFCGCYXHCJP1596	42 G
781QJ4427604	4UZFCGCY1HCJP1597	42 Q
781GJ4427606	4UZFCGCY3HCJP1598	42 G
781BJ4427675	4UZACGFE2JCJS7416	39 B
781PJ4427677	4UZFCGFE6JCJS0023	42 P
781QJ4427678	4UZFCGFE8JCJS0024	42 Q
781SJ4427680	4UZFCGFEXJCJS0025	42 S
781GJ4427752	4UZFCGFE6JCJS3925	42 G
781GJ4427754	4UZFCGFE8JCJS3926	42 G
781QJ4427756	4UZFCGFEXJCJS3927	42 Q
781QJ4427827	4UZFCGFE1JCJS3928	42 Q
781QJ4427829	4UZFCGFE3JCJS3929	42 Q
781PJ4427831	4UZFCGFE5JCJT7332	42 P
781SJ4427832	4UZFCGFE7JCJT7333	42 S
781QJ4427905	4UZFCGFE9JCJT7334	42 Q
781GJ4427907	4UZFCGFE9JCJT9908	42 G
781BJ4427982	4UZACGFE4JCJT9910	39 B
781BJ4427984	4UZACGFE6JCJT9911	39 B

**Product Upgrade 190814REV
Affected American Coach Serial Numbers**

2018 American Revolution

UIN	Chassis / VIN	Model
781SJ4427985	4UZFCGFE0JCJT9909	42 S
781QJ4428060	4UZFCGFE1JCJU2723	42 Q
781QJ4428062	4UZFCGFE3JCJU2724	42 Q
781BJ4428133	4UZACGFE7JCJU5233	39 B
781QJ4428134	4UZFCGFE5JCJU2725	42 Q
781GJ4428136	4UZFCGFE4JCJU5227	42 G
781GJ4428216	4UZFCGFE6JCJU5228	42 G
781DJ4428218	4UZFCGFE8JCJU5229	42 D
781GJ4428286	4UZFCGFE4JCJU5230	42 G
781QJ4428287	4UZFCGFE6JCJU5231	42 Q
781HJ4428289	4UZFCGFE3JCJT4171	44 H
781SJ4428360	4UZFCGFE8JCJU5232	42 S
781GJ4428363	4UZACGFE2JCJV8942	40 G
781HJ4428444	4UZFCGFEXJCJU0145	44 H
781DJ4428447	4UZACGFE2JCJU7665	40 D
781HJ4428503	4UZFCGFEXJCJV0805	44 H
781KJ4428505	4UZACGFE4JCJU7666	38 K
781HJ4428593	4UZFCGFE7JCJV0809	44 H
781FJ4428595	4UZACGFE0JCJV8941	39 F
781HJ4428672	4UZFCGFEXJCJV6250	44 H
781HJ4428754	4UZFCGFE6JCJV8934	44 H
781HJ4428831	4UZFCGFEXJCJV8936	44 H
781HJ4429007	4UZFCGFE7JCJW1292	44 H
781GJ4429083	4UZACGFE1JCJX0645	40 G
781HJ4429172	4UZFCGFEXJCJX3288	44 H
781DJ4429174	4UZACGFE3JCJX0646	40 D
781HJ4429263	4UZFCGFE3JCJX8803	44 H
781KJ4429322	4UZACGFE5JCJX0647	38 K
781FJ4429551	4UZACGFE4JCJX8805	39 F
781DJ4430101	4UZACGFE9JCKC4267	40 D

2020 American Revolution

UIN	Chassis / VIN	Model
775QL4432346	4UZFCGFE4KCLH5041	42 Q
775QL4433406	4UZFCGFEXLCLS7355	42 Q
775QL4433430	4UZFCGFE8LCLT4272	42 Q
775QL4433517	4UZFCGFE7LCLU3030	42 Q
775VL4433543	4UZFCGFEXLCLV1901	42 V
775QL4433686	4UZFCGFE8LCLV1900	42 Q

**Product Upgrade 190814REV
Affected American Coach Serial Numbers**

2015 American Tradition

UIN	Chassis / VIN	Model
780GF4416424	4UZFCGCY5ECFZ2821	42 G
780GF4416498	4UZFCGCY7ECFZ2822	42 G
780MF4416587	4UZFCGCY5ECFZ8697	42 M
780MF4416670	4UZFCGCY8ECGA3208	42 M
780GF4416735	4UZFCGCY9ECGA5730	42 G
780MF4416838	4UZFCGCYXECGA6952	42 M
780MF4416843	4UZFCGCY4ECGA6011	42 M
780GF4416998	4UZFCGCY6ECGB5454	42 G
780MF4417066	4UZFCGCY4ECGC2841	42 M
780GF4417289	4UZFCGCY2ECGD2428	42 G
780GF4417375	4UZFCGBG0ECGA4328	42 G
780GF4417620	4UZFCGBG9FCGF7286	42 G
780MF4417681	4UZFCGBG2FCGF7288	42 M
780GF4417691	4UZFCGBG0FCGF7287	42 G
780GF4417765	4UZFCGBG4FCGF7289	42 G
780MF4417769	4UZFCGBG0FCGF7290	42 M
780MF4417869	4UZFCGBG2FCGF7291	42 M
780MF4417883	4UZFCGCY2FCGH6835	42 M
780MF4417892	4UZFCGCY4FCGH6836	42 M
780GF4418009	4UZFCGBG4FCGF7292	42 G
780MF4418122	4UZFCGBG6FCGF7293	42 M
780GF4418127	4UZFCGBG8FCGF7294	42 G
780MF4418136	4UZFCGBGXFCGF7295	42 M
780MF4418146	4UZFCGBG6FCGK6646	42 M
780TF4418253	4UZFCGBG0ECFM5060	45 T
780GF4418362	4UZFCGBG5FCGK9358	42 G
780AF4418374	4UZFCGBG7FCGJ9611	45 A
780GF4418442	4UZFCGCY9FCGJ8032	42 G
780MF4418532	4UZFCGBG7FCGK9359	42 M
780AF4418604	4UZFCGBG6FCGK6680	45 A
780GF4418801	4UZFCGBG2FCGL5635	42 G
780GF4418908	4UZFCGBG4FCGL5636	42 G
780AF4418916	4UZFCGBG5FCGL1708	45 A
780MF4419247	4UZFCGBG3FCGL8317	42 M
780TF4419306	4UZFCGBG7FCGL1709	45 T
780MF4419382	4UZFCGBG1FCGM0678	42 M
780AF4419514	4UZFCGBG6FCGN5807	45 A
780TF4419571	4UZFCGBG9FCGG7493	45 T
780MF4419609	4UZFCGBG3FCGM0679	42 M
780MF4419683	4UZFCGBGXFCGM0680	42 M

**Product Upgrade 190814REV
Affected American Coach Serial Numbers**

2016 American Tradition

UIN	Chassis / VIN	Model
780AG4419688	4UZFCGBG0FCGG7494	45 A
780GG4419772	4UZFCGBG0FCGM4575	42 G
780TG4419777	4UZFCGBG7FCGG7489	45 T
780AG4419902	4UZFCGBG2FCGG7495	45 A
780TG4419965	4UZFCGBG4FCGG7496	45 T
780GG4420073	4UZFCGBG2FCGM4576	42 G
780TG4420261	4UZFCGBG6FCGZ2775	45 T
780MG4420739	4UZFCGBG2FCGT9619	42 M
780TG4420748	4UZFCGBG5FCHA4510	45 T
780AG4420799	4UZFCGBG7FCHA4511	45 A
780TG4420814	4UZFCGBG6FCGG7497	45 T
780AG4421093	4UZFCGBG5GCHF2994	45 A
780AG4421236	4UZFCGBG7GCHF2995	45 A
780AG4421282	4UZFCGBG4FCHA8483	45 A
780MG4421326	4UZFCGBG2FCGW3791	42 M
780GG4421366	4UZFCGBG4FCGW9544	42 G
780AG4421411	4UZFCGBG6GCHG1509	45 A
780AG4421413	4UZFCGBGXGCHF2991	45 A
780TG4421526	4UZFCGBG9FCGK6642	45 T
780AG4421572	4UZFCGBG2GCHG1510	45 A
780GG4421574	4UZFCGBG2FCGY4625	42 G
780AG4421629	4UZFCGBG6GCHL8705	45 A
780MG4421703	4UZFCGBG8FCHA8485	42 M
780TG4421761	4UZFCGBG9GCHN1125	45 T
780TG4421809	4UZFCGBG2GCHN3525	45 T

**Product Upgrade 190814REV
Affected Monaco Serial Numbers**

2018 Marquis

UIN	Chassis / VIN	Model
680LJ4428285	4UZACGFEXJCJT9913	40 L
680MJ4428443	4UZFCGFE6JCJU6654	44 M
680MJ4428671	4UZFCGFE0JCJW2204	44 M
680JJ4428751	4UZACGFE5JCJW2869	40 J
680MJ4428833	4UZFCGFE2JCJW2205	44 M
680JJ4428928	4UZACGFE1JCJW6546	40 J
680JJ4429004	4UZACGFE6JCJW9099	40 J
680LJ4429013	4UZACGFE1JCJX4064	40 L
680MJ4429015	4UZFCGFE4JCJW9110	44 M
680MJ4429260	4UZFCGFE2JCJX4063	44 M
680JJ4429320	4UZACGFEXJCJX3284	40 J
680LJ4429402	4UZACGFE6JCJX6537	40 L
680JJ4429478	4UZACGFE5JCJY4208	40 J
680LJ4429549	4UZACGFE9JCJY6446	40 L
680JJ4429614	4UZACGFE6JCJY1401	40 J
680MJ4429616	4UZFCGFE5JCJX8799	44 M
680MJ4429731	4UZFCGFE6JCJY4207	44 M
680LJ4429856	4UZACGFE7JCJY6445	40 L
680LJ4429976	4UZACGFE0JCJZ4984	40 L
680LJ4430164	4UZACGFE8JCKA5841	40 L
680JK4430300	4UZACGFE4JCKC1650	40 J

2019 Marquis

UIN	Chassis / VIN	Model
680LK4430100	4UZACGFE2JCJZ4985	40 L
680LK4430230	4UZACGFE3JCKB2972	40 L
680LK4430232	4UZACGFE8JCKC1649	40 L
680MK4430651	4UZFCGFE8JCKH3059	44 M
680MK4430723	4UZFCGFE2JCKJ5999	44 M
680BK4430797	4UZFCGFE6JCKK9078	44 B
680LK4430865	4UZACGFE3JCKK1725	40 L
680LK4431013	4UZACGFE9KCKN2365	40 L
680BK4431075	4UZFCGFE6KCKN2359	44 B
680LK4431162	4UZACGFE1JCKK9080	40 L
680LK4431163	4UZACGFE7KCKM6774	40 L
680MK4431220	4UZFCGFE2KCKN2360	44 M
680BK4431222	4UZFCGFE4KCKP6580	44 B
680MK4431281	4UZFCGFE6KCKP6581	44 M
680LK4431499	4UZACGFE7KCKN2364	40 L
680MK4431547	4UZFCGFE7KCKR9027	44 M
680MK4431548	4UZFCGFE2KCKS6793	44 M
680MK4431607	4UZFCGFEXKCKT4169	44 M
680MK4431641	4UZFCGFEXKCKT0199	44 M
680BK4431642	4UZFCGFE2KCKU3920	44 B

**Product Upgrade 190814REV
Affected Monaco Serial Numbers**

2019 Marquis

UIN	Chassis / VIN	Model
680BK4431704	4UZFCGFE4KCKU3921	44 B
680MK4431767	4UZFCGFE6KCKU3922	44 M
680MK4432738	4UZFCGFE1KCKV1877	44 M
680BK4432987	4UZFCGFEXKCKW4885	44 B

2018 Signature

UIN	Chassis / VIN	Model
619MJ4428755	4UZFCGFE6JCJW2191	44 M
619LJ4429404	4UZACGFE5JCJX8716	40 L
619MJ4429547	4UZFCGFE8JCJW6548	44 M
619MJ4429729	4UZFCGFE4JCJW9107	44 M
619JJ4429794	4UZACGFE7JCJZ1595	40 J
619MJ4429855	4UZFCGFE6JCJX4065	44 M
619MJ4429916	4UZFCGFE9JCKC1648	44 M
619LJ4429918	4UZACGFE8JCKA5838	40 L
619LJ4429978	4UZACGFEXJCKA8742	40 L
619LJ4430038	4UZACGFE8JCKC4258	40 L
619MJ4430040	4UZFCGFE6JCKD1957	44 M

2019 Signature

UIN	Chassis / VIN	Model
619JK4429673	4UZACGFE2JCJY4568	40 J
619MK4430370	4UZFCGFE0JCKF2688	44 M
619MK4430505	4UZFCGFE0JCKF9012	44 M
619MK4430577	4UZFCGFE6JCKG2643	44 M
619LK4430579	4UZACGFEXJCKF9013	40 L
619LK4430649	4UZACGFE0JCKG2647	40 L
619MK4430721	4UZFCGFE8JCKK1726	44 M
619LK4430795	4UZACGFE2JCKG2648	40 L
619MK4431011	4UZFCGFE8KCKM6773	44 M
619BK4431073	4UZFCGFE4KCKN2361	44 B
619MK4431161	4UZFCGFE6KCKN2362	44 M
619BK4431219	4UZFCGFE8KCKP6582	44 B
619BK4431221	4UZFCGFEXKCKP6583	44 B
619MK4431279	4UZFCGFE9KCKR9028	44 M
619LK4431283	4UZACGFE0JCKL5193	40 L
619MK4431311	4UZFCGFE4KCKS6794	44 M
619MK4431364	4UZFCGFE6KCKS6795	44 M
619MK4431368	4UZFCGFE2KCKT0200	44 M
619MK4431498	4UZFCGFE8KCKN2363	44 M
619LK4431606	4UZACGFE3JCKM0484	40 L
619MK4431640	4UZFCGFE4KCKT0201	44 M
619MK4431703	4UZFCGFEXKCKT9159	44 M

**Product Upgrade 190814REV
Affected Monaco Serial Numbers**

2019 Signature

UIN	Chassis / VIN	Model
619MK4431766	4UZFCGFE3KCKW0788	44 M
619MK4431769	4UZFCGFE3KCKV1878	44 M
619MK4431831	4UZFCGFE8KCKU3923	44 M
619MK4432572	4UZFCGFE3KCKY4010	44 M
619MK4432854	4UZFCGFE5KCKY4011	44 M
619MK4433314	4UZFCGFE6KCLU9576	44 M