

Technical product information

Topic	Active engine mount replacement
Market area	Bentley: worldwide (2WBE),Hongkong-Macau (5HK)
Brand	Bentley
Transaction No.	2055760/1
Level	EH
Status	Approval
Release date	

New customer code

Object of complaint	Complaint type	Position
vehicle service -> IT systems -> SVM (software version management)	functionality -> cannot be started	
whole vehicle -> assemblies -> engine assembly	noise, vibration -> noise	

Vehicle data

Bentayga

Sales types

Type	MY	Brand	Designation	Engine code	Gearbox code	Final drive code
4V1*	2017	E		DDBB	*	*
4V1*	2018	E		DDBB	*	*
4V1*	2019	E		DDBB	*	*
4V1*	2020	E		DDBB	*	*

Chassis numbers

Manufacturer	Filler	Type	Filler	MY	Factory	From	To	Prod from	Prod to
*	*	*	*	*	*	000001	027866		

Documents

Document name
master.xml

Customer statement / workshop findings

Software reprogramming or replacement of the active engine mount control unit must be carried out when the active engine mounts are replaced with Part number 4M0 199 255/6 BH.

Technical background

Current software is incompatible with active engine mounts part numbers 4M0 199 255/6 BH.

When the active engine mounts are replaced with the above part numbers, the active engine mount control module must be reprogrammed or replaced.

Production change

New software and engine mount combination introduced in production from VIN SJAAH14V1LC027866.

Measure

■ **IMPORTANT:** You must check the following before proceeding

- Ensure that both active engine mounts are now fitted with part numbers 4M0199255/6 BH
- Check and confirm the Hardware version number of address 00BA *Assembly Mounting*, the hardware version must be H10.

■ Figure 1 shows the Hardware version number to be H10



Figure 1

- Should the Hardware version number not be H10, you must replace the Active engine mount control module with part number 4M0 907 145 E.

Rep.Gr 10 → Electrohydraulic engine mounting control unit - To remove and fit

If the control unit is at H10 proceed straight to the [Reprogramming control module](#) section of this TPI.

Reprogramming control module

Update the software of the Active engine mounting control module - Diagnostic address 00BA as follows;

1. Select and run Guided fault finding. Within the Special functions tab select SVM – Problem related Hardware/Software update then select Perform test (Figure 3).

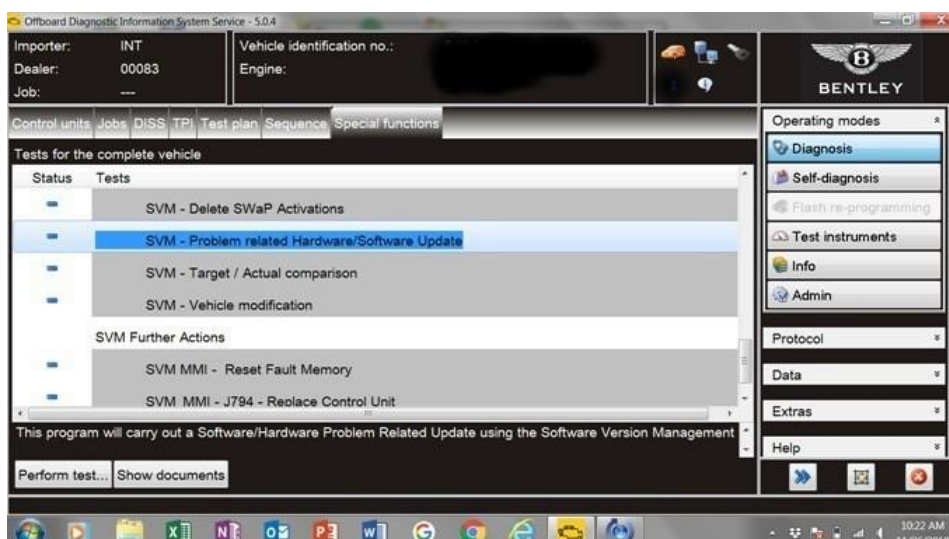


Figure 3

2. On the next screen enter the SVM code 4V0BAAEM01 and select Adopt (Figure 4).

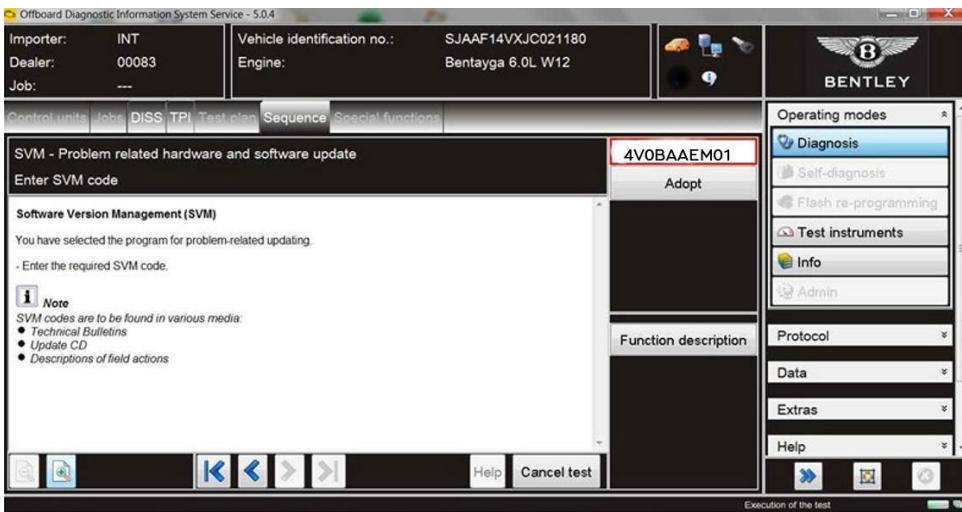


Figure 4

3. On the following screen, confirm the code then select Yes.

4. Follow on screen prompts.

5. The software of 00BA Assembly Mounting will now be reprogrammed (Figure 5). *NOTE: Depending on the software part number of the control module your vehicle may skip straight to step 6, if so proceed as instructed.*

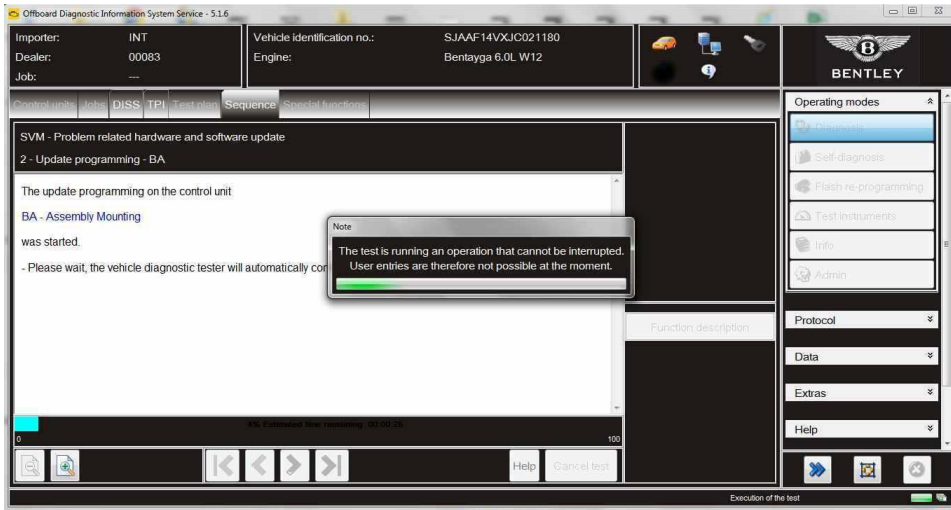


Figure 5

6. Once the software is updated, a parameter setting is required, select Yes (Figure 6).

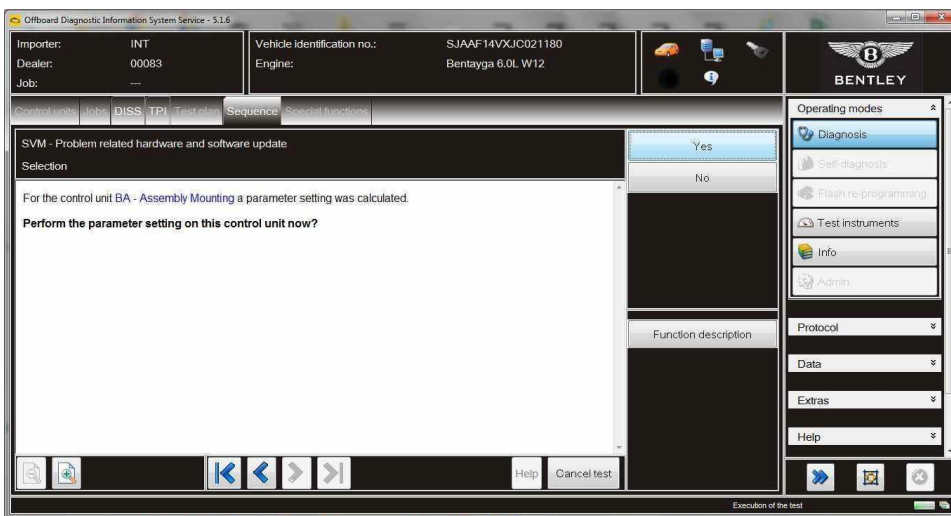


Figure 6

7. You will then see a confirmation message that the reprogramming has been successful (Figure 7).

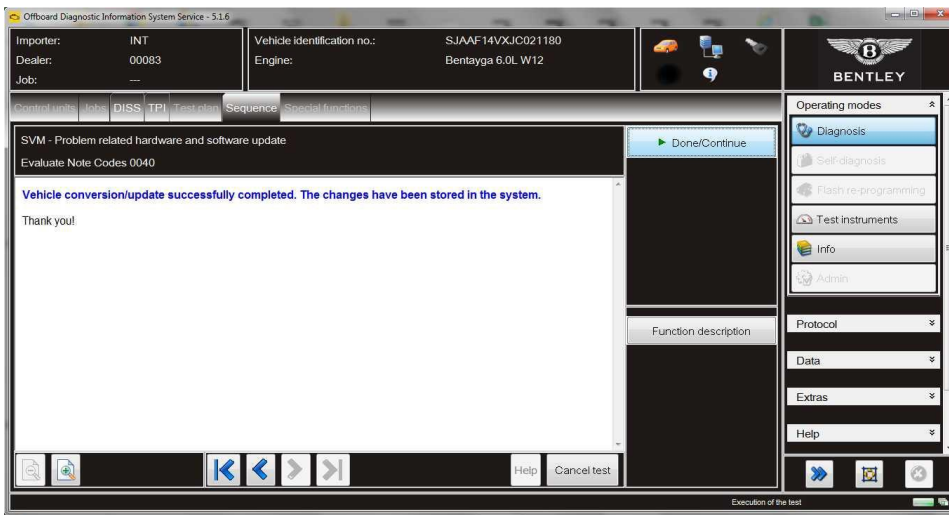


Figure 7

8. Follow on screen prompts until program end.

9. Confirm that the software reprogramming has completed successfully. Read the identification data of address 00BA (Figure 8).

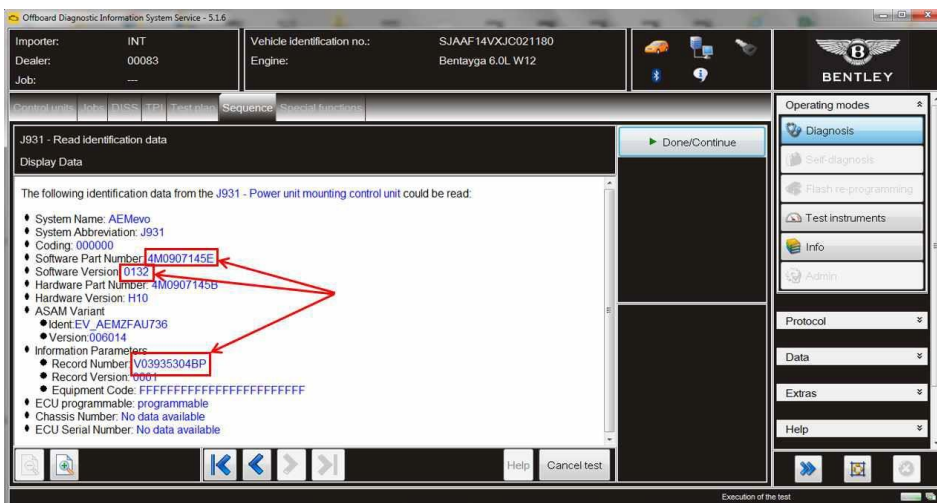


Figure 8

Your vehicle must read as per the table below;

Software Part Number	Software version	Record Number
4M0907145E	0132	V03935304BP

10. Complete the Basic settings of the active engine mounts:

00BA – Assembly Mounting → Guided functions → BA – Basic settings

Warranty accounting instructions

Reprogramming of the control module

Warranty claim type	110 or 910
Labour operation code	01290004
Damage number	1039
Damage type	0041
Time	40 TU
Criteria ID	01

Refer to ElsaPro for repair codes if replacing the control module.

Parts information

Part Number	Description	Quantity
4M0907 145 E	Control unit for electrohydraulic engine mount	1