



## **Service Bulletin No. 3125**

MODEL: J Series	TYPE: Service Information	SECTION/GROUP: 12-SUSPENSION	DATE: 10/07/2019
SUBJECT: <b>ZF Front Sway Bar Lubrication</b>			
CONDITIONS: Service Information Only			

### **Description:**

Motor Coach Industries ("MCI") is instructing customers hearing noise near the front sway bar during driving to follow this procedure to apply anti-seize lubricant as per the instruction. This procedure is applicable to MY18 to MY20 coaches within the VIN range: 68314-69657, 21000-21018



**Read this entire procedure before beginning work.**

**Use Safe Shop Practices At All Times.**

**To avoid personal injury:**

- a. **Proper Personal Protective Equipment (PPE) must be worn. Safety glasses and protective gloves are required for working with DEF Fluid.**
- b. **Turn the main battery disconnect switch to the OFF position.**
- c. **Ensure that both the front and the rear wheels are chocked.**
- d. **Position the ENGINE RUN and ENGINE START switches on the engine compartment remote control box to the OFF position.**
- e. **Allow enough time for components to cool down prior to working in the engine compartment**

## **1.0 Material requirements**

No material required.

## **2.0 Special Tools**

Anti-seize lubricant, MCI P/N: 23-01-0055 (Vendor: Permatex, VPN: 80078).

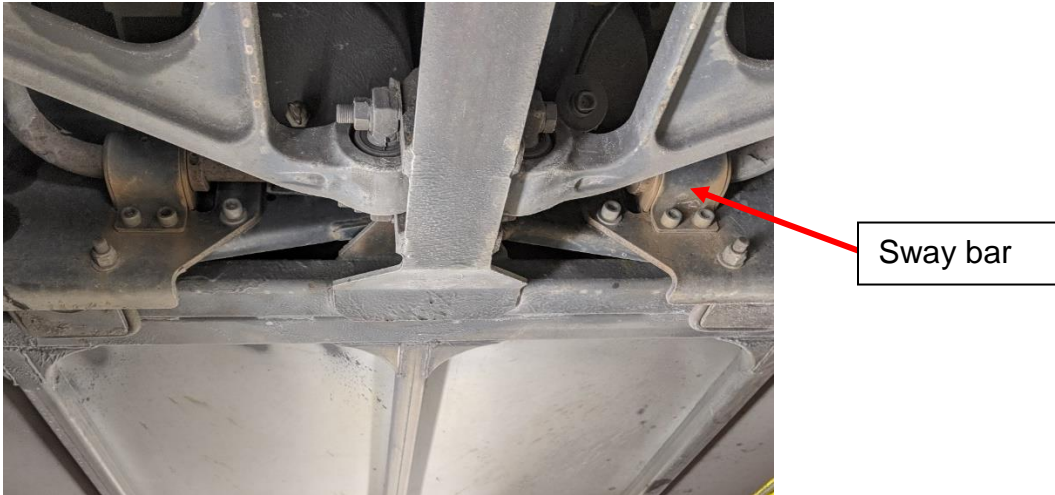
## **3.0 Lubricant application**

Drain the air from the front suspension by releasing all the air in the front tank equipped with an automatic drain valve.

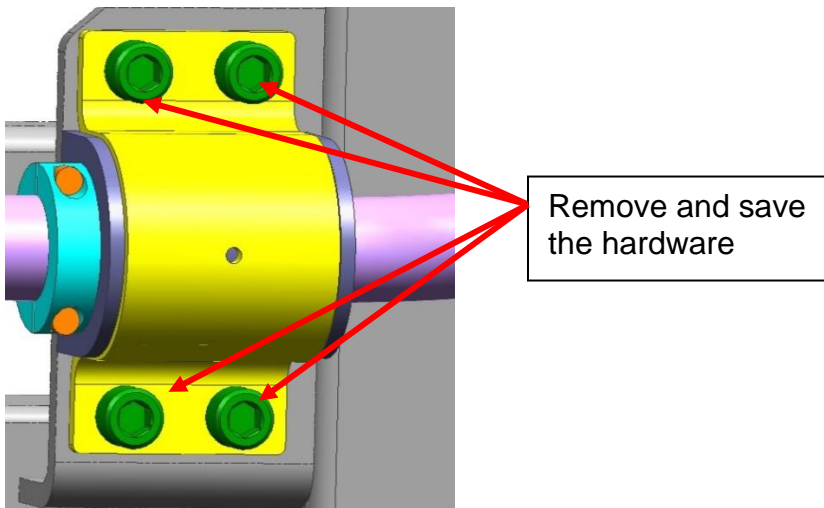


Lift the coach to desired work height. Position safety stands underneath the coach in only the specified locations shown in Section 3F in the MCI J4500 Maintenance Manual.

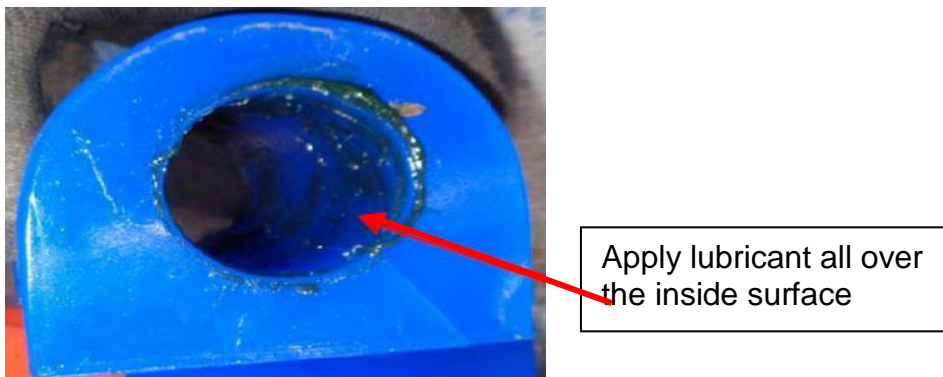
Identify the sway bar under the front suspension system.



Remove and save the 4 bolts and nuts securing the sway bar clamps on the **driver side**.

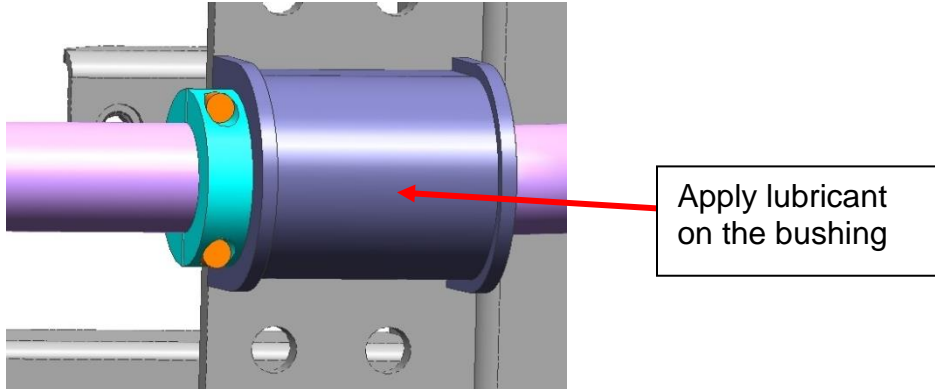


Take the bushing out and apply anti-seize lubricant, MCI P/N: 23-01-0055, all over the inside surface of it.



Install the bushing on the sway bar.

Apply anti-seize lubricant, MCI P/N: 23-01-0055, on the outside surface of the bushing where it comes in contact with the clamp.



Reinstall the clamps using existing hardware and torque them to 206-226Ft-Lbs.



Repeat the process for the bushing on the curb side.

**End of the procedure**