



Service Bulletin

Bulletin No.: 18-NA-361


Date: October, 2019

TECHNICAL

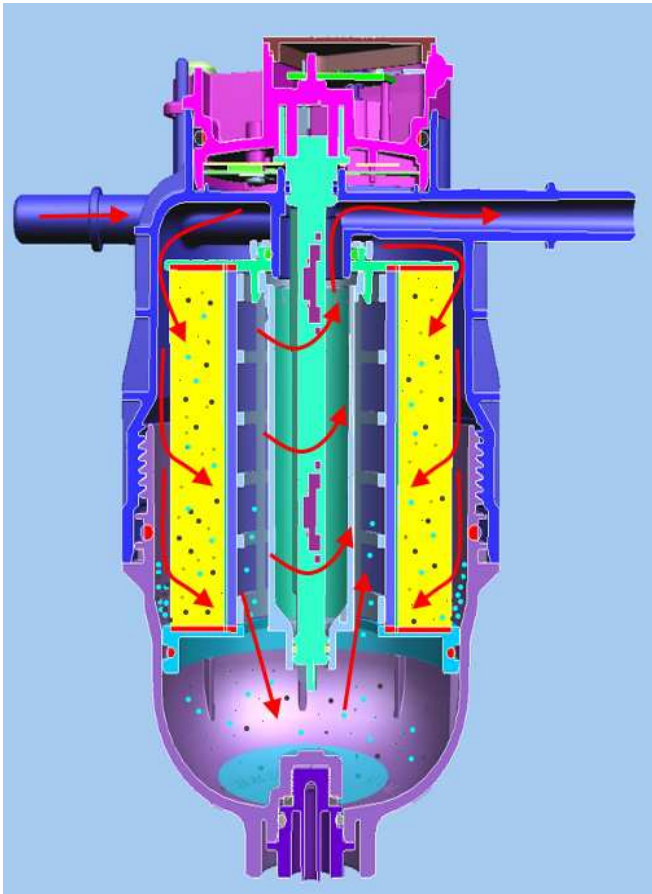
Subject: Diagnostic Tip for Fuel System Contamination

Brand:	Model:	Model Year:		VIN:		Engine:	Transmission:
		from	to	from	to		
Chevrolet	Silverado	2017	2018			L5P	
	Silverado 1500	2020	2020			LM2	
	Silverado 2500/3500	2019	2020			L5P	
	Silverado 4500HD, 5500HD and 6500HD	2019	2020			L5D	
GMC	Sierra	2017	2018			L5P	
	Sierra 1500	2020	2020			LM2	
	Sierra 2500/3500	2019	2020			L5P	

Involved Region or Country	North America, Israel
-----------------------------------	-----------------------

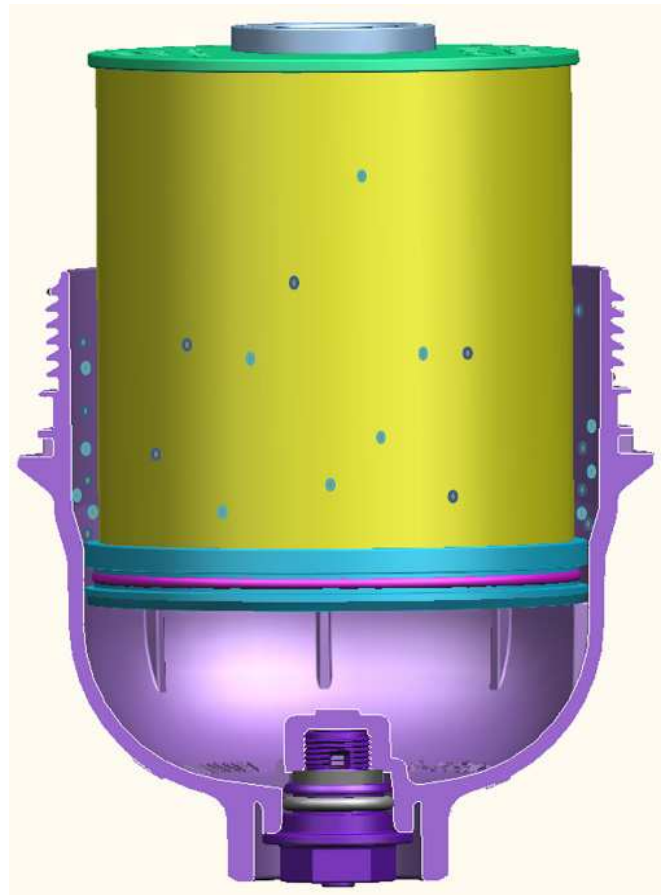
<p>Condition</p>	 <p style="text-align: right;">5168457</p> <p>Some technicians may find metal particles in the fuel system during diagnostics. Important: If the fuel/water filter has been removed for inspection. Do Not install the filter back into the housing until the fuel/water separator reservoir has been cleaned. Refer to Information on Fuel/Water Filter Removal section below.</p>
<p>Correction</p>	<p>If you encounter such a situation. DO NOT replace the fuel system as described in 16-NA-102. Please perform the following fuel system flushing procedure prior to performing further diagnostics Once the fuel system has been flushed, continue with diagnostics as described in SI.</p>

Information on Fuel/Water Filter Removal



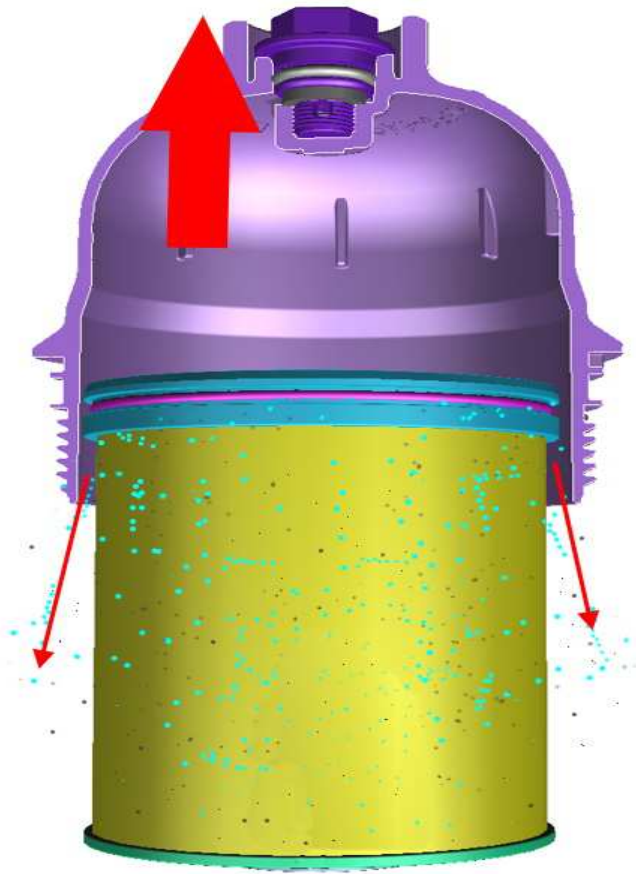
5417311

Water or other like contaminants in the fuel will create drivability concerns and loss of engine power. If water and/or debris is present in the fuel system, the fuel cannot cool and lubricate the components properly, causing overheating, rust and corrosion. This can result in component failure. Water and debris can enter the fuel system in several ways, either through a contaminated refueling source, plugged venting or through long term condensation in the vehicle fuel tanks.

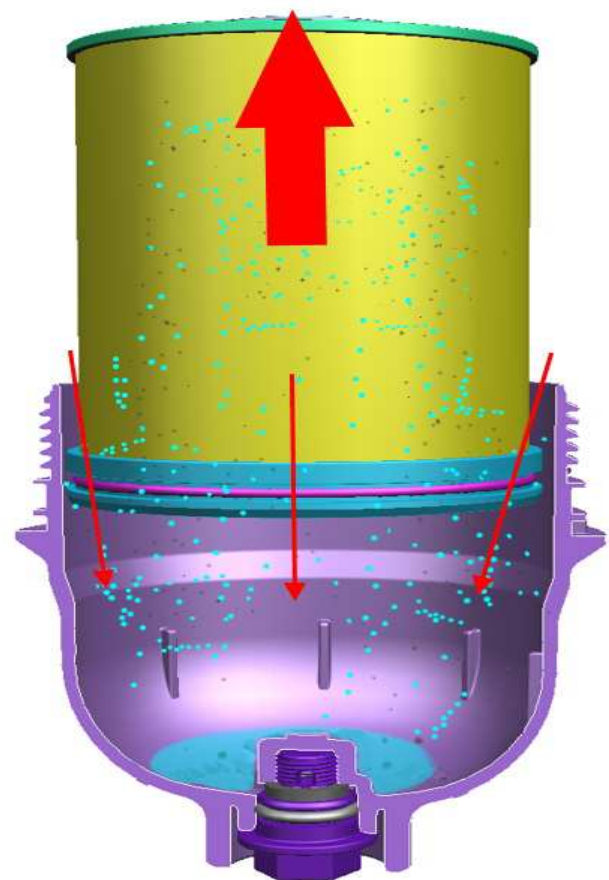


5417281

1. Remove the fuel/water filter from the housing using care not to separate the filter from the fuel/water separator reservoir.



5417298



5417283

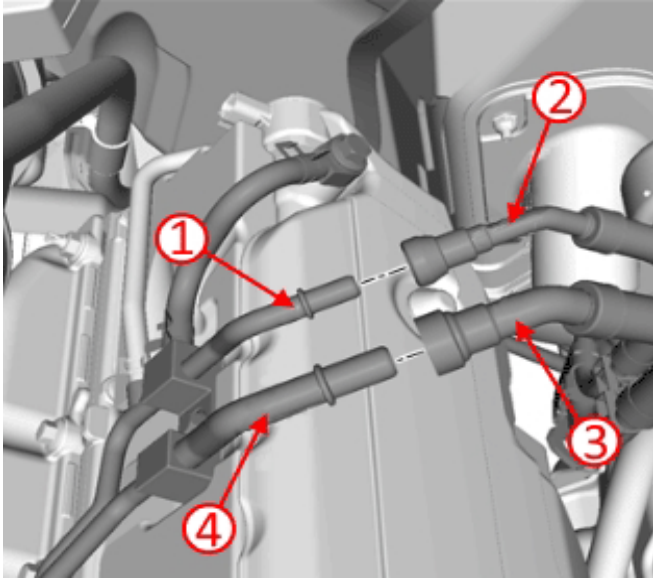
2. Use care, separate the filter from the fuel/water separator reservoir by placing the filter downwards in a clean/dry drain pan.

- If the filter is facing upwards, debris left on the sides of the filter may escape past the O-ring seal during removal and settle in the fuel/water separator reservoir.
 - Water and/or debris left in the fuel/water separator reservoir will flow past the filter, directly in to the fuel system when re-started.
3. Inspect the fuel/water separator reservoir and filter for heavy debris.
 - If heavy debris is found in the filter, clean the fuel/water separator reservoir and continue to the Fuel System Flushing Procedure.
 - If no signs of debris are found, clean the fuel/water separator reservoir, install new filter and refer to SI for further diagnostics.

Fuel System Flushing Procedure

Note: Performing the test may aid in determining the source and section of the fuel system causing the contamination.

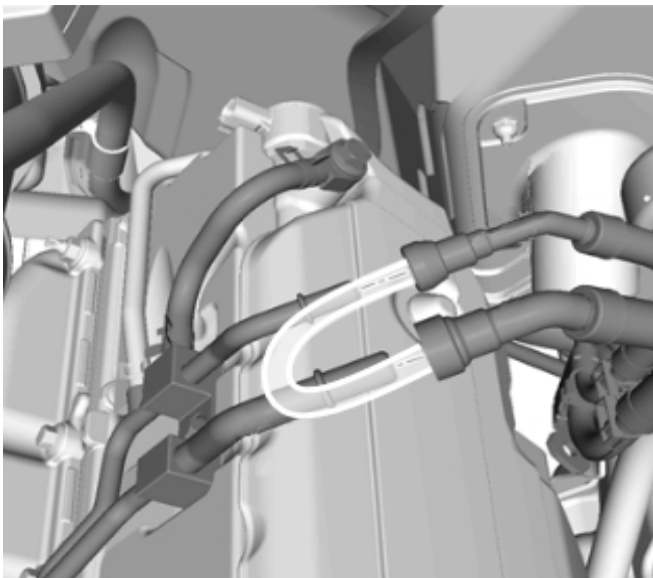
1. If removed, re-install the fuel filter.



5167517

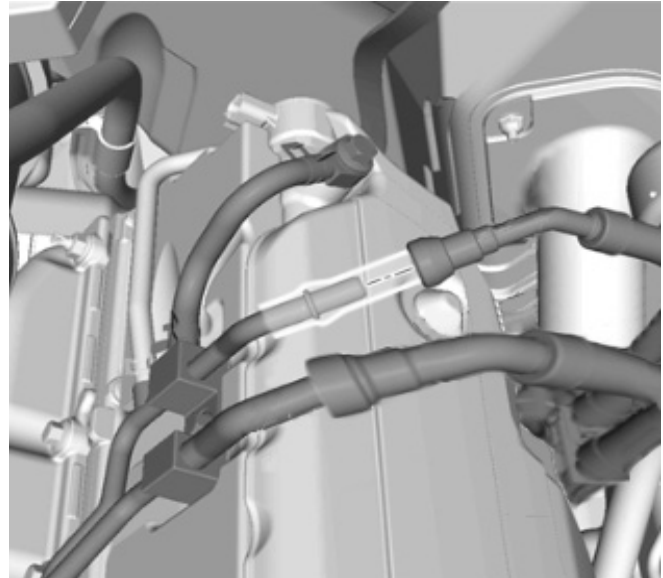
2. Disconnect the chassis side fuel feed hose (3) from the engine side fuel feed pipe (4).
3. Place the end of the chassis side fuel feed hose into a clean container and run the fuel pump to clean any debris left in the fuel lines, approximately 2-3 gallons (7.6 –11.4L).
4. Clean the fuel/water separator reservoir.
5. Install new fuel filter.
6. Disconnect the chassis side fuel return hose (2) from the engine side return pipe (1).

Note: The white “Tubing” shown in the graphics below depict the route of the clear line, not the length.



5168476

7. Install a clear line between the fuel supply hose and the fuel return hose.
8. Run the fuel pump until the fuel runs clear in the line.



5168447

9. Connect the fuel supply hose to the engine supply pipe.
10. Install a clear line in series at the fuel return hose to the engine return pipe.
11. Run the fuel pump until the fuel runs clear in the line.

Reconnect all fuel lines and retest for any codes or symptoms in the vehicle.

Parts Information

No parts are required for this repair.

Version	5
Modified	Released December 10, 2018 Revised June 24, 2019 - Added 2020 to Model Year. Revised August 14, 2019 – Added 2019 and 2020 Silverado HD Models Revised October 03, 2019 - Added Information on Fuel/Water Filter Removal section. Revised October 14, 2019 - Removed LCF and added 2020 Silverado/Sierra 1500 with LM2.

