

WJ07 - Checking Plastic Rear Window and Replacing it if Necessary (Workshop Campaign)

Vehicle Type: **911 GT3 RS (991)/911 R (991)**

Model Year: **2016**

Subject: **Plastic rear window (polycarbonate)**

Information: **There is a possibility that the plastic rear window can become partially detached from the body at the bonding area on the affected vehicles due to chemical incompatibility and impurities during the manufacturing process for the plastic rear window.**

This can result in noises and can subsequently cause the rear window to start leaking and water can leak into the vehicle interior over the service life of the vehicle.

Remedial Action: Check bonding on the rear window and replace the rear window if necessary.

The most important steps at a glance:

- Check whether the **bonding of the rear window has become detached**
- If the **bonding is detached**, the **rear window must be replaced**
- The **rear window glass is removed from the outside using the cutting thread** during this campaign

Affected Vehicles: Only vehicles assigned to the campaign (see also PCSS Vehicle Information). There are 5 vehicles affected in North America.

Parts Required

Parts Info: **No parts are required for checking** the rear window.

Parts required for **replacing the rear window**:

Part No.	Designation	Qty.
99154511191	⇒ Rear window	1 ea.
...	Adhesive set, e.g. Part No. 000 043 305 35	1 ea.
	or	
	Adhesive set, commercially available, e.g.:	1 ea.*
	- Teroson	(for warranty invoicing only)
	- Makra	
	- 3M	

* If necessary, the adhesive set can be ordered using the specified Porsche part number or from your expendable items supplier.

For purchasing the adhesive set from your expendable items supplier, enter the **Part No. WJ070000002**, "adhesive" designation as an **additional part** at \$141.25 during warranty invoicing.

Required Tools

Tools: The following tools are required for replacing the rear window:

Designation/Comment	Use
V.A.G 1344 - Suction Lifter	Removing rear window
VAS 6452 - Removal Kit for Flush Bonded Windows	
VAS 6452/2 - Wire for Removal Tool	
V.A.G 1561A - Special Electric Cutter	Preparing window aperture
VAS 5237 - Double cartridge gun VAS 5237	Applying adhesive

Checking Rear Window and Replacing it if Necessary



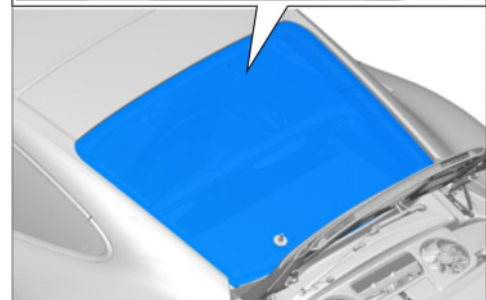
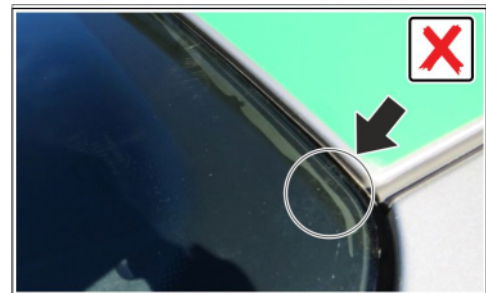
Information

General information on carrying out the leak test

- Use a water/soap emulsion for carrying out the leak test.
- The following fluid mixture makes an ideal water emulsion: 6 drops of commercially available soap mixed in 1 liter of tap water.
- Fill a spray bottle with soapy water.
- It can take up to 2 minutes to detect a possible leak indicated by air bubbles, depending on the vehicle.
- The leak test involves blowing in compressed air. To do this, the compressed air must be set to max. 8 bar at the pressure reducer for the compressed air supply.
- A second person is needed in order to carry out the leak test.

Work Procedure: 1 **Checking rear window**

- 1.1 Press lightly against the window all around the edge of the rear window from inside the vehicle using two fingers.
- If you feel the rear window lifting off in the bonding area ⇒ *Damaged screen print -arrow-*, the bonding has become detached.



Damaged screen print

- 1.2 If the rear window cannot be lifted off with your fingers, also spray the area with soapy water from the outside and then apply compressed air from inside the vehicle.
- If bubbles form, the bonding has become detached.



Information

If the **bonding is detached**, the **rear window must be replaced** (see Step 2).



Checking rear window

If the rear window has not become detached and you do not see any bubbles, no further action is required ⇒ **End of test measure and continue with Step 3 (Invoicing - Scope 1)**.

2 **Replacing rear window**



Information

Please bear in mind here that contrary to the instructions in the Workshop Manual, the rear window **must be removed from the outside using the cutting thread** during this campaign. No preliminary and subsequent work is required inside the vehicle in this case.

Instructions for removing vehicle windows with the cutting thread can be found in the Workshop Manual for vehicle type 992: ⇒ *Workshop Manual 'General information on removing car windows'*.

The rear window is installed in accordance with the instructions in the Workshop Manual: ⇒ *Workshop Manual '648655 Replacing rear window (Coupe)'*.

- 3 Enter the campaign in the Warranty and Maintenance booklet.

Warranty Processing



Information

The check must always be carried out by a Porsche Dealership.

Porsche Dealerships that carry out **this campaign fully** must submit an invoice for either **Scope 1** or **Scope 2**.

Porsche Dealerships that hand the vehicle over to an **external service provider** in order to carry out the **work required for replacing the rear window** must submit an invoice for **Scope 3**.

Please document a copy of the invoice for this in PQIS.

Scope 1:

Working time:

Checking rear window

Labor time: **21 TU**⇒ **Damage Code WJ07 066 000 1**

Scope 2:

Working time:

Checking and replacing rear window

Labor time: **165 TU**

Includes: Replacing rear window

Parts required:

99154511191	Rear window	1 ea.
WJ070000001*	Expendable items (cutting thread)	1 ea. (for warranty invoicing only)*
00004330535	Adhesive set	1 ea.
or		
WJ070000002**	Adhesive	1 ea. (for warranty invoicing only)**

* For warranty invoicing, invoice the Part No. WJ070000001, "expendable items" designation, as an **additional part** at \$3.75.

** For warranty invoicing, invoice the Part No. WJ070000002, "adhesive" designation, as an **additional part** at \$141.25.

⇒ **Damage Code WJ07 066 000 2**

Scope 3:

Working time:

Checking and replacing rear window

Labor time: **21 TU**

Includes: Checking rear window

The work involved in removing and installing the rear window is carried out by an external service provider and must therefore be invoiced as sublet labor time.

Parts required:

99154511191 Rear window 1 ea.

WJ070000001* Expendable items (cutting thread) 1 ea.
(for warranty invoicing only)*

00004330535 Adhesive set 1 ea.

or

WJ070000002** Adhesive 1 ea.
(for warranty invoicing only)**

Sublet labor:

Removing and installing rear window

Sublet labor time: **max.
144 TU*****

* For warranty invoicing, invoice the Part No. WJ070000001, "expendable items" designation, as an **additional part** costing \$3.75.

** For warranty invoicing, invoice the Part No. WJ070000002, "adhesive" designation, as an **additional part** costing \$141.25.

*** The maximum amount that will be paid as sublet labor time is the amount corresponding to the specified working time based on the individual charging rate under warranty of the respective Porsche Dealership. Please include a copy of the invoice for external services with the warranty claim.

⇒ **Damage Code WJ07 066 000 2**

Important Notice: Technical Bulletins issued by Porsche Cars North America, Inc. are intended only for use by professional automotive technicians who have attended Porsche service training courses. They are written to inform those technicians of conditions that may occur on some Porsche vehicles, or to provide information that could assist in the proper servicing of a vehicle. Porsche special tools may be necessary in order to perform certain operations identified in these bulletins. Use of tools and procedures other than those Porsche recommends in these bulletins may be detrimental to the safe operation of your vehicle, and may endanger the people working on it. Properly trained Porsche technicians have the equipment, tools, safety instructions, and know-how to do the job properly and safely. Part numbers listed in these bulletins are for reference only. The work procedures updated electronically in the Porsche PIWIS diagnostic and testing device take precedence and, in the event of a discrepancy, the work procedures in the PIWIS Tester are the ones that must be followed.

© 2019 Porsche Cars North America, Inc.