

WINDOWS

Purpose

This document outlines the steps for replacing the foam tape on an 8800 series exit window.

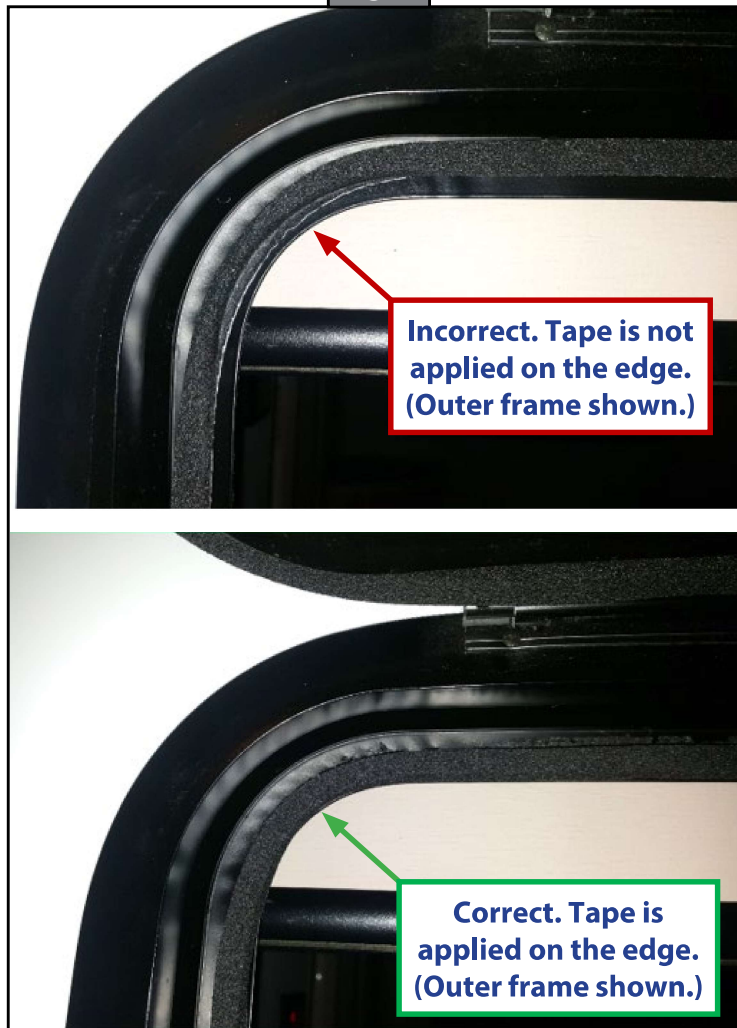
Resources Required

- 1 - 2 persons, depending on task
- Ladder
- Scraper tool
- Prop to keep window open during repair
- New foam tape (Order PN: 241291 from LCI)

Procedure

1. Prop the window open or have a second person hold the window open.
2. Inspect the current foam tape application. If the tape is not in the proper location all the way on the edge of the frame (Fig. 1) then the foam tape will need to be repaired.

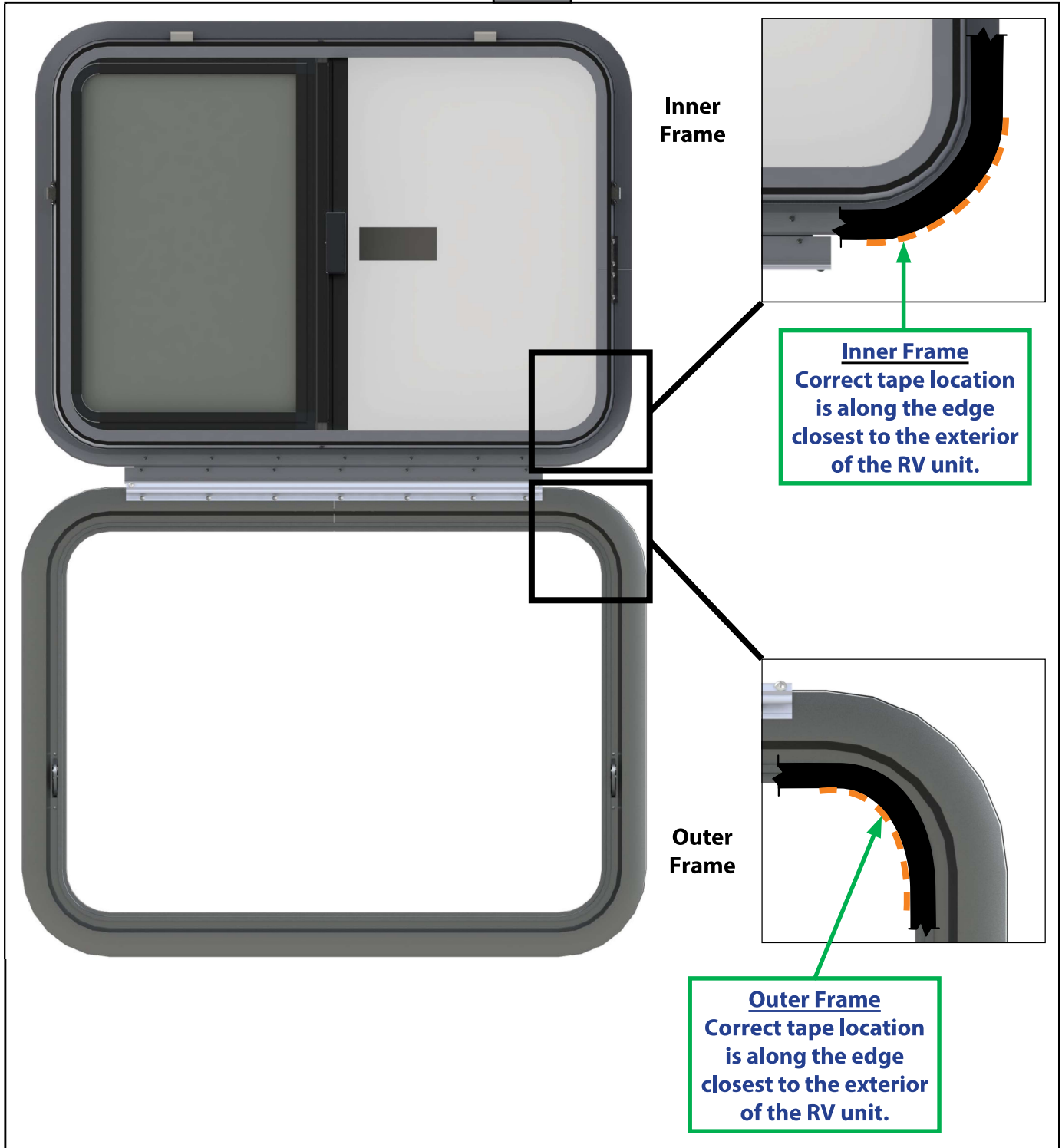
Fig. 1



WINDOWS

NOTE: Foam tape on both the inner and outer frame (Fig. 2) may need repair.

Fig. 2



WINDOWS

3. Remove the foam tape from the entire outer frame and/or inner frame.

NOTE: If the tape is difficult to remove, use a tool to peel up and grab the "string" within the foam tape (Fig. 3). This will help to remove the foam tape completely.

Fig. 3



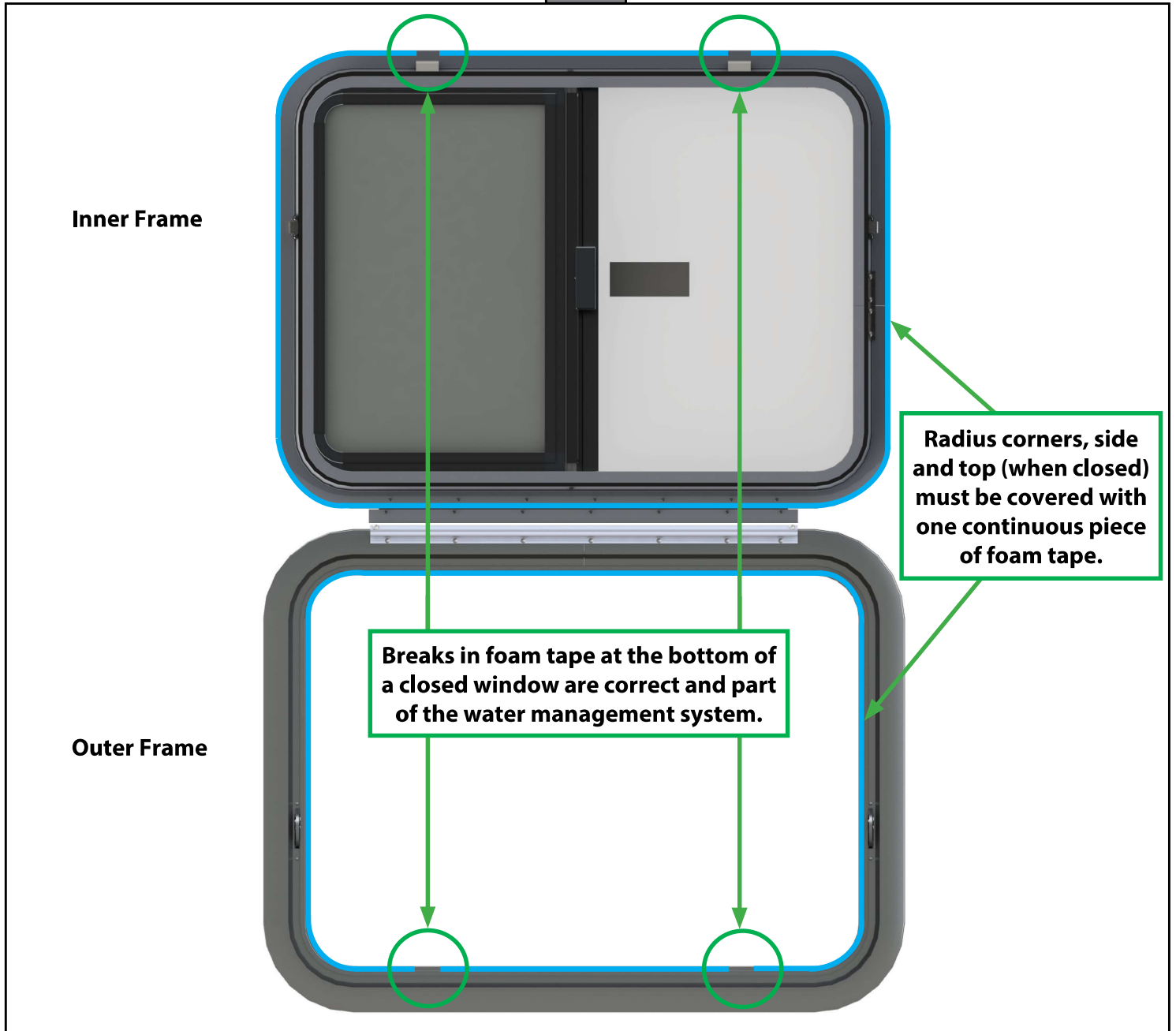
NOTE: Use a scraping tool to remove large excess foam tape from the frame surface. It is acceptable if a small amount of residual tape remains before the new tape is applied.

4. Remove plastic backing from the foam tape.
5. Starting at the bottom, near the foam tape weep slots, apply new foam tape.
 - A. Make sure the tape is aligned with the edge of the frame.
 - B. The tape repair must be one continuous piece where shown (Fig. 4). Repairs made in small sections may still result in leaks due to the break/opening/splice in the tape. The weep hole slots on the bottom of the inner and outer frames are intentional and correct. Breaks in the other sections may result in leaks.

NOTE: On the inner edge of the topside near the hinge, it may be easier to install new foam tape from the inside of the unit to make sure the it is installed all the way to the edge of the frame.

WINDOWS

Fig. 4

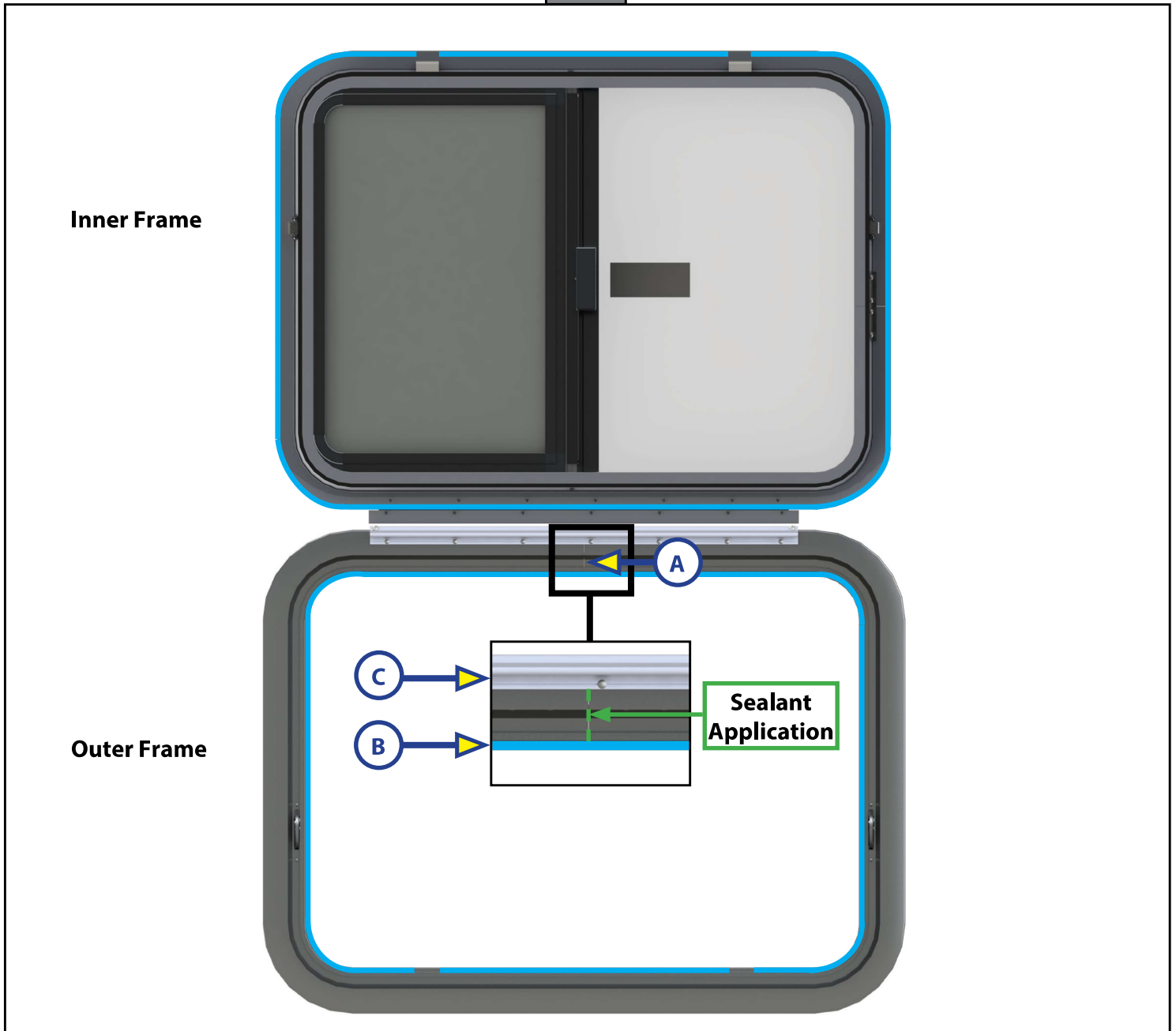


6. Verify all re-applied foam tape is installed on the edges.

WINDOWS

7. Apply 100% silicone on the frame seam (Fig. 5A) at the top of the outer frame when the window is in the open position. Completely cover the frame seal with the silicone from the edge of foam tape (Fig 5B) up to the hinge (Fig 5C).

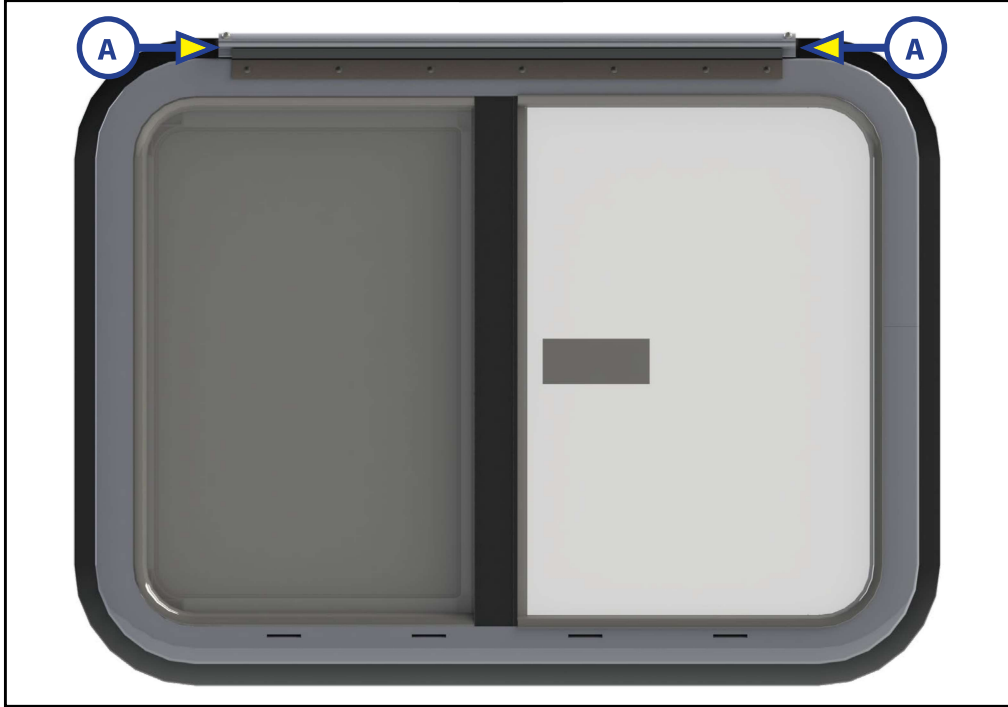
Fig. 5



WINDOWS

8. Apply 100% silicone on the ends of the hinge (Fig. 6A) when the window is in the closed position.

Fig. 6



9. Closing the window after the repair may take extra force to counter the new uncompressed tape. Have a second person on a ladder push the window shut while the person inside locks the window.

As a supplier of components to the RV industry, safety, education and customer satisfaction are our primary concerns. Should you have any questions, please do not hesitate to contact us at (574) 537-8900 or by email at customerservice@lci1.com. Self-help tips, technical documents, product videos and a training class schedule are available at lci1.com or by downloading the MyLCI app.