

AXLES AND SUSPENSION

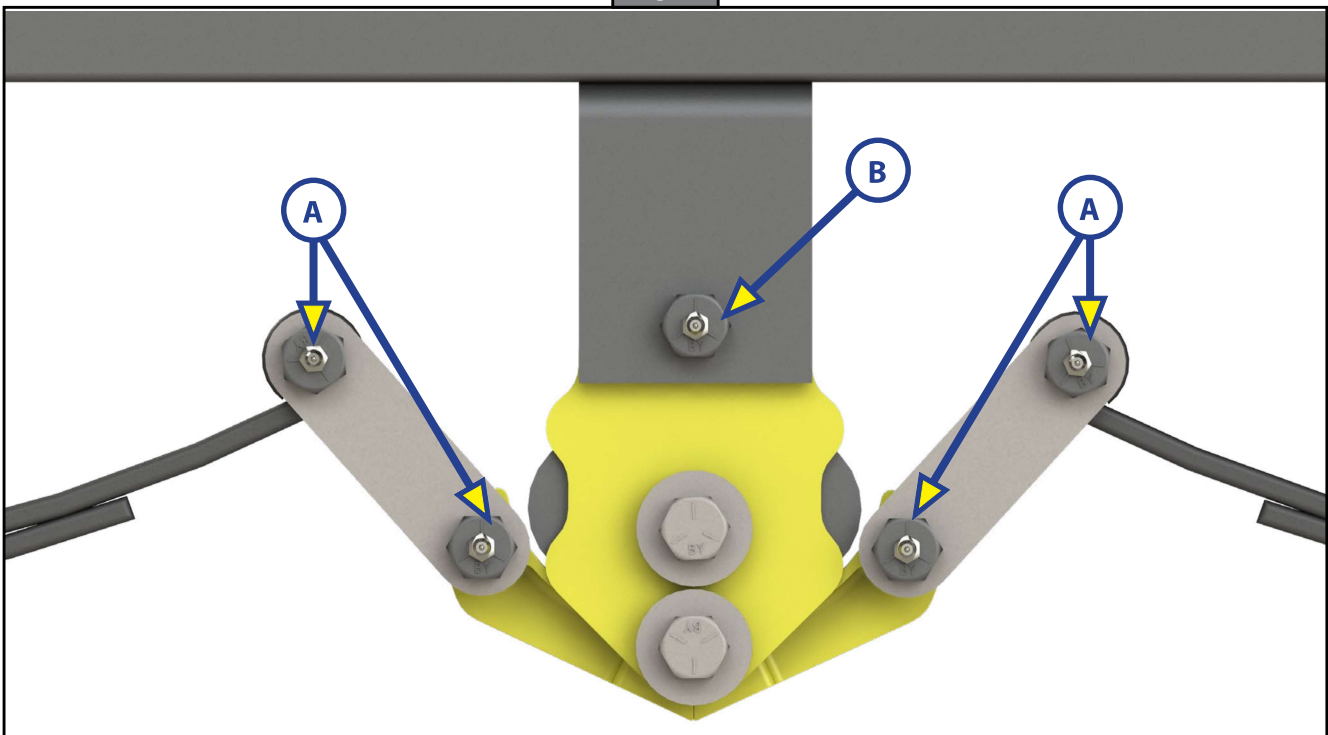
Purpose

This document outlines the correct procedure for applying grease with the NLGI (National Lubricating Grease Institute) code of GC-LB to the wet (greaseable) shackle bolts (Fig. 1A) and equalizer bolts (Fig. 1B).

NOTE: The GC-LB rating codes denotes the lubricants use for automotive and chassis applications, but does not apply to its quality.

NOTE: Images used in this document are for reference only when assembling, installing and/or operating this product. Actual appearance of provided and/or purchased parts and assemblies may differ.

Fig. 1



Safety

CAUTION

The "CAUTION" symbol above is a sign that a procedure has a safety risk involved and may cause personal injury, product and/or property damage if not performed safely and within the parameters set forth in this manual.

CAUTION

Moving parts can pinch, crush or cut. Keep clear and use caution.

Resources Required

- Pneumatic or manual grease gun
- Grease with the NLGI code of GC-LB
- Lint-free shop cloth

AXLES AND SUSPENSION

Preparation

1. Make sure grease gun is loaded with multipurpose grease, NLGI code GC-LB.
2. Pump a small amount of grease through the gun's nozzle to make sure that the grease is flowing smoothly.
3. Wipe nozzle clean with a lint-free shop cloth before starting the procedure.

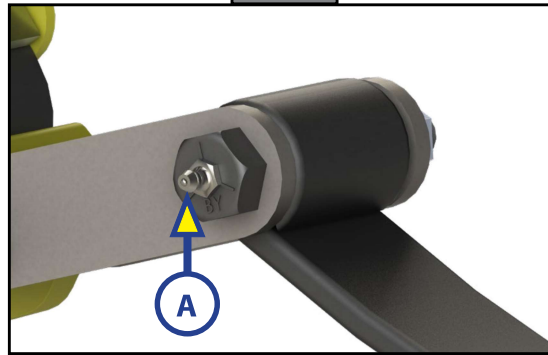
Procedure

CAUTION

Trailer weight may be need to be lifted off of the suspension for the wet bolt to accept grease. The trailer weight could press the mating bushing tight against the exit hole in the bolt, blocking grease flow.

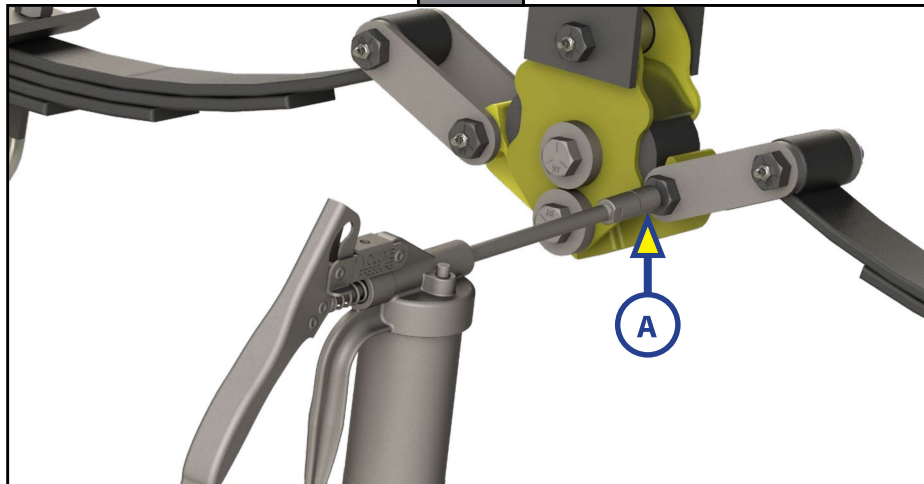
1. Locate the grease (Zerk) fitting (Fig. 2A) on one of the wet bolts.

Fig. 2



2. Attach the grease gun nozzle (Fig. 3A) onto the grease fitting.

Fig. 3



3. Pump grease, about two pumps, into the wet bolt until the grease is overflowing out of the bolt.
4. Clean off any excess grease with a lint-free shop cloth.
5. Repeat steps 1 through 4 on other wet bolts.

As a supplier of components to the RV industry, safety, education and customer satisfaction are our primary concerns. Should you have any questions, please do not hesitate to contact us at (574) 537-8900 or by email at customerservice@lci1.com. Self-help tips, technical documents, product videos and a training class schedule are available at lci1.com or by downloading the MyLCI app.