

Technical Service Bulletin

Mazda North American Operations
Irvine, CA 92618-2922



Subject: CORROSION OF WHEEL NUT	Bulletin No.: 02-007/19
	Last Issued: 12/20/2019

APPLICABLE MODELS / VINS

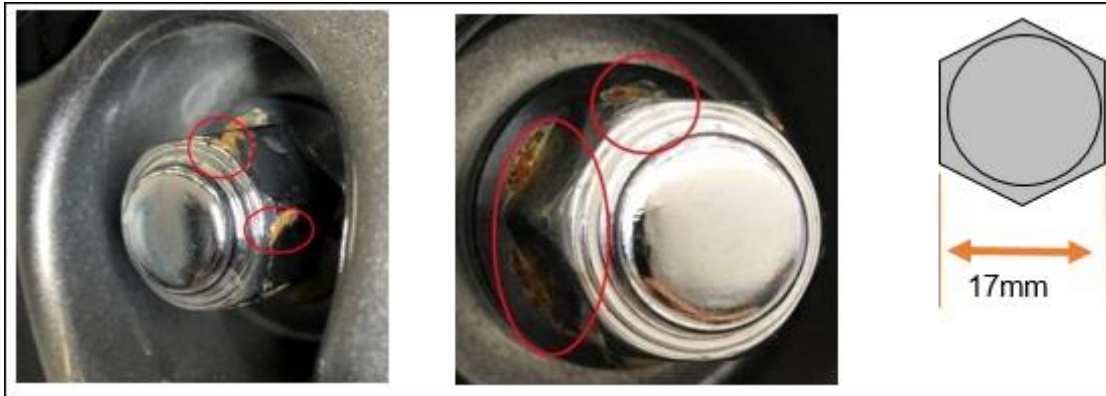
- 2019 Mazda2 (Mexico Built) vehicles with VINs in between 3MD DJ**** ** 307899 - 317142 (produced from Sep. 1, 2018 to Jul. 22, 2019)
- 2017 - 2018 Mazda3 (Japan Built) vehicles with VINs in between JM1 BN **** ** 191040 - 199538 (produced from May 7, 2018 to Oct. 27, 2018)
- 2018 Mazda3 (Mexico Built) vehicles with VINs in between 3MZ BN **** ** 255004 - 277187 (produced from Sep. 1, 2018 to Dec. 19, 2018)
- 2019 - 2020 MAZDA3 (Japan Built) vehicles with VINs lower than JM1 BP **** ** 150579 (produced before Aug. 1, 2019)
- 2019 - 2020 MAZDA3 (Mexico Built) vehicles
- 2018 Mazda6 vehicles with VINs in between JM1 GL**** ** 316373 - 333577 (produced from May 7, 2018 to Dec. 1, 2018)
- 2019 CX-3 vehicles with VINs in between JM1 DK**** ** 406295 - 441849 (produced from May 7, 2018 to Apr. 1, 2019)
- 2018 - 2019 CX-5 vehicles with VINs in between JM3 KF**** ** 404441 - 542054 (produced from May 7, 2018 to Dec. 1, 2018)
- 2018 - 2019 CX-9 vehicles with VINs in between JM3 TC**** ** 231724 - 314070 (produced from May 7, 2018 to Dec. 1, 2018)
- 2018 - 2019 MX-5 vehicles with VINs in between JM1 ND**** ** 206203 - 308245 (produced from May 7, 2018 to Apr. 1, 2019)
- 2018 - 2019 MX-5 30th anniversary edition vehicles with VINs from JM1 ND**** ** 400001.

DESCRIPTION

Some vehicles may exhibit corrosion of the wheel nuts. This is caused by torsional stress concentrating on the tip of the wheel nut because of the thin and long shape of the nut, which damages the coating and causes the corrosion. To correct this issue, the width across the flats of the wheel nuts have been changed from 17mm to 21mm.

CONSUMER NOTICE: The information and instructions in this bulletin are intended for use by skilled technicians. Mazda technicians utilize the proper tools/equipment and take training to correctly and safely maintain Mazda vehicles. These instructions should not be performed by "do-it-yourselfers." Customers should not assume this bulletin applies to their vehicle or that their vehicle will develop the described concern. To determine if the information applies, customers should contact their nearest authorized Mazda dealership. Mazda North American Operations reserves the right to alter the specifications and contents of this bulletin without obligation or advance notice. All rights reserved. No part of this bulletin may be reproduced in any form or by any means, electronic or mechanical---including photocopying and recording and the use of any kind of information storage and retrieval system ---without permission in writing.

NOTE: This concern only occurs to vehicles with a wheel nut of 17mm width across the flats.



Customers having this concern should have their vehicle repaired using the following repair procedure.

NOTE:

- On May 1, 2018, Japan produced vehicles starting using 17 mm hex lug nuts instead of 21 mm on the same size thread.
- On December 3, 2018, there was a switch from 17 mm lug nuts back to 21 mm lug nuts for Mazda6, CX-5 and CX-9 vehicles with the VINS listed below.

Vehicle	Starting VIN of switch from 17 mm to 21 mm lug nuts on Dec 3, 2018
Mazda6	M1GL1UM8J1333518
CX-5	JM3KFBY2K0543197
	JM3KFACM5K1542002
	JM3KFBDM2K0543540
CX-9	JM3TCACY1K0314028

- On April 1, 2019, there was a switch from 17 mm lug nuts back to 21 mm lug nuts for CX-3 and MX-5 vehicles with the VINS listed below.

Vehicle	Starting VIN of switch from 17 mm to 21 mm lug nuts on Dec 3, 2018
CX-3	JM1DKDB76K0441664
MX-5	JM1NDAC7XK0308207

CONSUMER NOTICE: The information and instructions in this bulletin are intended for use by skilled technicians. Mazda technicians utilize the proper tools/equipment and take training to correctly and safely maintain Mazda vehicles. These instructions should not be performed by "do-it-yourselfers." Customers should not assume this bulletin applies to their vehicle or that their vehicle will develop the described concern. To determine if the information applies, customers should contact their nearest authorized Mazda dealership. Mazda North American Operations reserves the right to alter the specifications and contents of this bulletin without obligation or advance notice. All rights reserved. No part of this bulletin may be reproduced in any form or by any means, electronic or mechanical---including photocopying and recording and the use of any kind of information storage and retrieval system ---without permission in writing.

REPAIR PROCEDURE

1. Verify customer concern.
2. Replace the wheel nuts with new 21 mm nuts and replace the wheel nut wrench with a modified one according to the instructions on MGSS (WHEEL AND TIRE REMOVAL/INSTALLATION).

NOTE:

- For Mazda3 5 door HB with Bose audio, replace the 17 mm spare tire bolt with a 21 mm spare tire bolt.
- If the vehicle is equipped with 17 mm wheel lock set, replace it with a 21 mm wheel lock set and save the 17 mm wheel lock set as it may be collected in the future for inspection.

3. Verify repair.

PARTS INFORMATION

Parts Number	Description	Qty.	Notes
B002-37-160B	Nut, Hub	16 or 20	Aluminum wheel
0603-26-161A	Nut, Hub	16 or 20	Steel wheel
LD47-69-671	Wrench, Nut, Hub	1	All except Mazda3 (BP) and MX-5 (ND) 30th anniversary edition
LDY7-69-671	Wrench, Nut, Hub	1	Mazda3 (BP) and MX-5 (ND) 30th anniversary edition
DGH9-66-A91	Spare Tire Bolt	1	21 mm spare tire bolt (for Mazda3 5 door HB with Bose audio)
000088120DBP	Accessory wheel lock set	1	Used if vehicle is equipped with a 17 mm wheel lock set

NOTE: Select the corresponding parts according to the GEPC.

CONSUMER NOTICE: The information and instructions in this bulletin are intended for use by skilled technicians. Mazda technicians utilize the proper tools/equipment and take training to correctly and safely maintain Mazda vehicles. These instructions should not be performed by "do-it-yourselfers." Customers should not assume this bulletin applies to their vehicle or that their vehicle will develop the described concern. To determine if the information applies, customers should contact their nearest authorized Mazda dealership. Mazda North American Operations reserves the right to alter the specifications and contents of this bulletin without obligation or advance notice. All rights reserved. No part of this bulletin may be reproduced in any form or by any means, electronic or mechanical---including photocopying and recording and the use of any kind of information storage and retrieval system ---without permission in writing.

WARRANTY INFORMATION**NOTE:**

- This warranty information applies only to verified customer complaints on vehicles eligible for warranty repair.
- This repair will be covered under Mazda's New Vehicle Limited Warranty term.
- Additional diagnostic time cannot be claimed for this repair.

Warranty Type	A
Symptom Code	53
Damage Code	9A
Part Number Main Cause	B002-37-160B or 0603-26-161A
Quantity	16 or 20
Operation Number / Labor Hours:	XXR97XRX / 0.4 Hrs.

NOTE:

- Claim wheel nut wrench (Qty=1) as a related part.
- Claim the accessory wheel lock kit 000088120DBP (21 mm hex) as a related part (if the vehicle is equipped with a 17 mm wheel lock set) and save the 17 mm wheel lock set as it may be collected in the future for inspection.

CONSUMER NOTICE: The information and instructions in this bulletin are intended for use by skilled technicians. Mazda technicians utilize the proper tools/equipment and take training to correctly and safely maintain Mazda vehicles. These instructions should not be performed by "do-it-yourselfers." Customers should not assume this bulletin applies to their vehicle or that their vehicle will develop the described concern. To determine if the information applies, customers should contact their nearest authorized Mazda dealership. Mazda North American Operations reserves the right to alter the specifications and contents of this bulletin without obligation or advance notice. All rights reserved. No part of this bulletin may be reproduced in any form or by any means, electronic or mechanical---including photocopying and recording and the use of any kind of information storage and retrieval system ---without permission in writing.