

Subject: REPLACEMENT ENGINE ASSEMBLY FAILURE	M-Tips No.: MT-002/19
	Last Issued: 12/19/2019

BULLETIN NOTES

This bulletin supersedes the previously issued bulletin(s) listed below. The changes are noted in Red text.

Previous M-Tips:	Date(s) Issued:
MT-002/19	09/30/2019
MT-014/16	06/01/2016

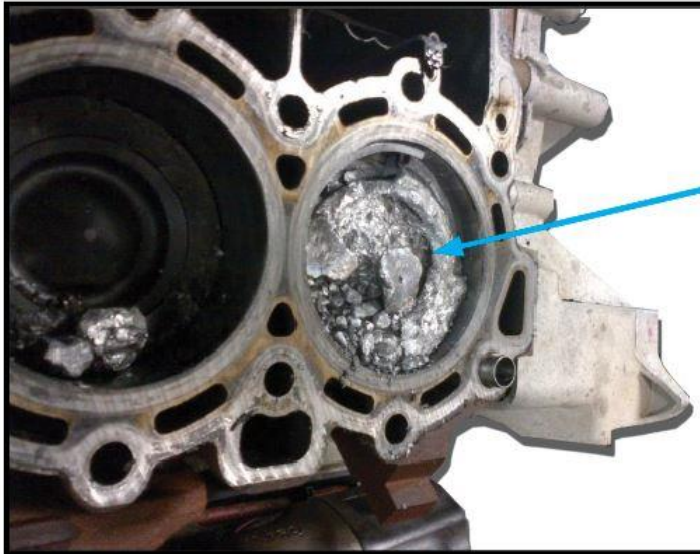
APPLICABLE MODEL(S)/VINS

2020 CX-30
2016-2020 CX-3
2013-2020 CX-5
2007-2012 CX-7
2007-2020 CX-9
2007-2020 MX-5
2004-2011 RX-8
2011-2020 Mazda2
2004-2020 Mazda3
2006-2017 Mazda5
2003-2020 Mazda6

DESCRIPTION

If an engine assembly is replaced after a catastrophic internal mechanical failure, clean the intake manifold internally before installing a replacement engine assembly. If the intake manifold is not cleaned properly, the replacement engine may fail prematurely.

Metallic debris from the old engine (with catastrophic internal mechanical failure) may rest inside the intake manifold. When the new engine assembly is installed, debris in the intake manifold will be ingested into the new engine and cause internal damage.

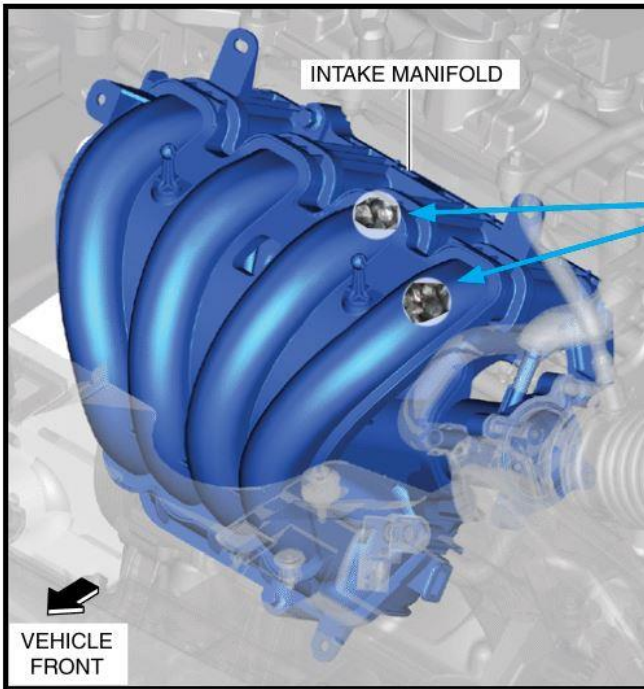


Metallic Debris

**Catastrophic Internal Engine
Mechanical Failure**

Clean the intake manifold internally to remove any debris from old engine before installing the new replacement engine assembly.

If the intake manifold cannot be properly cleaned internally, replace it.



**Metallic Debris
from old engine**

Warranty Compliance Note: Mazda's Warranty Policy does not cover damage to the replacement engine if the intake manifold was not cleaned properly.

An editorial board comprised of MNAO service staff members generates, collects, and verifies information for this publication.

To contribute repair tip ideas, send an e-mail to mtips@mazdausa.com. All contributions become property of MNAO, which assumes permission to publish them without further consideration.