

Classification:

EC19-031

Reference:

ITB19-043

COPYRIGHT© NISSAN NORTH AMERICA, INC.

Date:

December 16, 2019

## **VOLUNTARY EMISSIONS SERVICE CAMPAIGN VEHICLES REGISTERED IN CALIFORNIA; ENGINE CONTROL MODULE**

**CAMPAIGN ID #s:** P9329, P9344, P9346, P9348, and P9350

**APPLIED VEHICLES:** 2016-2019 Q50 (V37)  
2017-2019 Q60 (CV37)  
2015-2019 QX60 (L50)

**Check Service COMM or Dealer Business Systems (DBS)  
National Service History to confirm campaign eligibility.**

### **INTRODUCTION**

Infiniti is conducting this voluntary emissions service campaign on certain specific model year Infiniti vehicles (see **APPLIED VEHICLES**) registered in the state of California. The engine control module (ECM) will be inspected, and reprogrammed if it applies. This service will be performed at no charge to the customer for parts or labor.

### **IDENTIFICATION NUMBER**

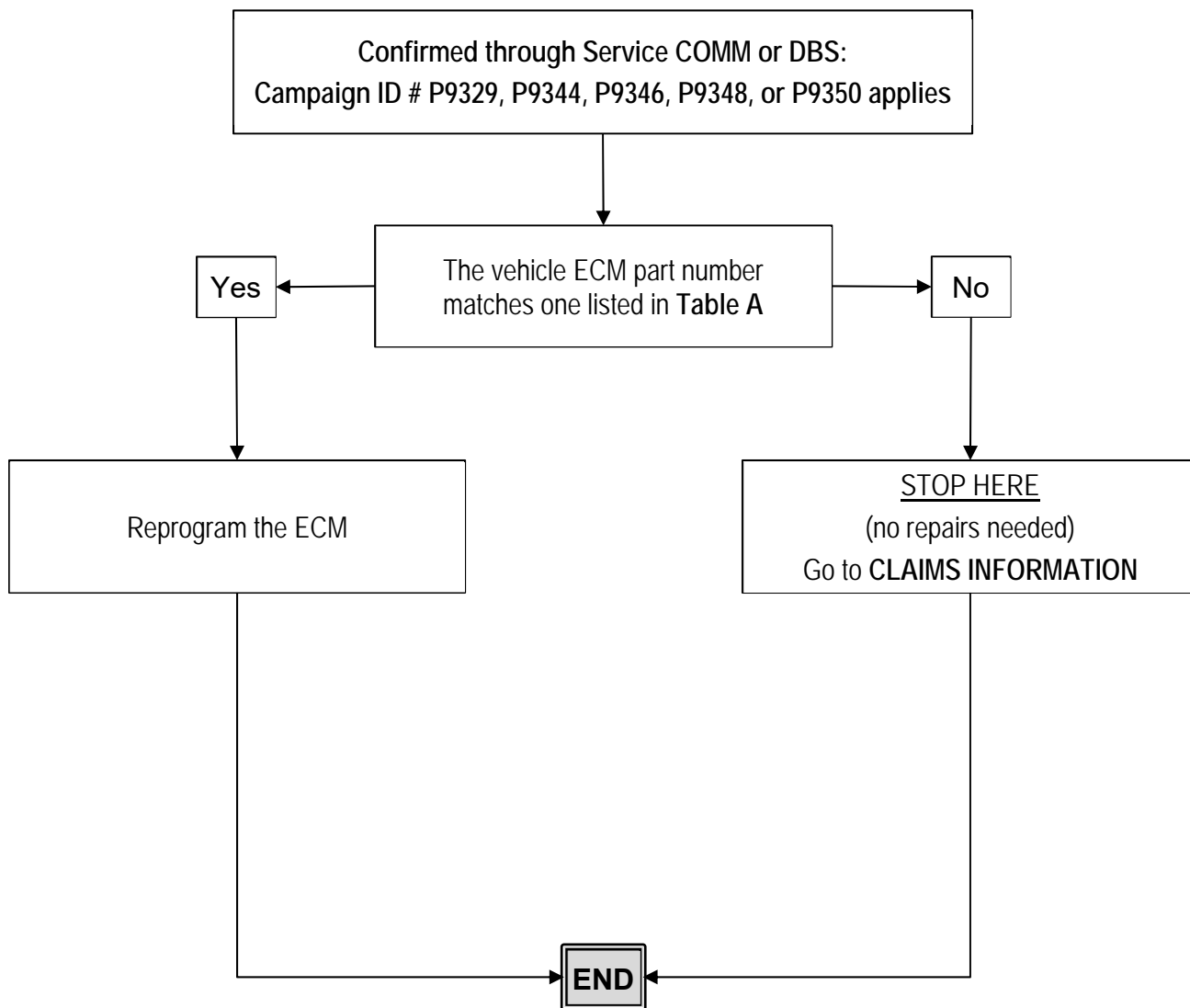
Infiniti has assigned identification numbers P9329, P9344, P9346, P9348, and P9350 to this campaign. The correct number must appear on all communication and documentation of any nature dealing with this campaign.

### **RETAILER RESPONSIBILITY**

Retailers are to repair vehicles falling within range of this campaign that enter the service department. This includes vehicles purchased from private parties, vehicles presented by transient (tourists) owners, and vehicles in a retailer's inventory.

Infiniti Bulletins are intended for use by qualified technicians, not 'do-it-yourselfers'. Qualified technicians are properly trained individuals who have the equipment, tools, safety instruction, and know-how to do a job properly and safely. **NOTE:** If you believe that a described condition may apply to a particular vehicle, DO NOT assume that it does. See your Infiniti retailer to determine if this applies to your vehicle.

## REPAIR OVERVIEW



## SERVICE PROCEDURE

### Reprogram the ECM

**IMPORTANT:** Before starting the reprogramming procedure, make sure:

- ASSIST on the CONSULT PC has been synchronized (updated) to the current date.
- All CONSULT-III plus (C-III plus) software updates, if any, have been installed.
- The CONSULT PC is connected to the Internet (Wi-Fi or cable).

#### HINT:

- If you are not familiar with the reprogramming procedure, *click here*. This will link to the "CONSULT-III plus (C-III plus) ECM Reprogramming" general procedure.
- Take the vehicle for a 10 minute drive in order to meet the following Idle Air Volume Learn (IAVL) conditions:
  - Engine coolant temperature: 70-100°C (158-212°F)
  - Battery voltage: More than 12.9V (At idle)
  - Transmission: Warmed up
- After reprogramming is complete, it is required to perform Throttle Valve Closed Position, Idle Air Volume Learn, Accelerator Closed Position, and DTC Erase.



Figure 1

#### **NOTICE**

- Connect a battery maintainer or smart charger to the 12V battery. If the vehicle battery voltage drops below 12.0V or above 15.5V during reprogramming, the ECM may be damaged.
- Be sure to turn OFF all vehicle electrical loads. If a vehicle electrical load remains ON, the ECM may be damaged.
- Be sure to connect the AC Adapter. If the CONSULT PC battery voltage drops during reprogramming, the process will be interrupted and the ECM may be damaged.
- Turn OFF all external Bluetooth® devices (e.g., cell phones, printers, etc.) within range of the CONSULT PC and the plus VI. If Bluetooth® signal waves are within range of the CONSULT PC and the plus VI during reprogramming, reprogramming may be interrupted and the ECM may be damaged.

1. Using C-III plus, confirm the current ECM part number and write it on the repair order.
  - If it matches one of the part numbers in **Table A** (on the next three pages), reprogram the ECM.
  - If it does not match any of the part numbers in **Table A**, no repair is needed. Go to **CLAIMS INFORMATION** on the last page of this bulletin.

Table A

Model	Year	CURRENT ECM PART NUMBER: 23710-	
Q50	2016	5CD5A, 5CD6A	
		5CD5B, 5CD6B	
		5CD5C, 5CD6C	
		5CD5D, 5CD6D	
		5CD5E, 5CD6E	
		5CF1A, 5CF2A, 5CF3A, 5CF4A, 5CF5A, 5CF6A, 5CF7A, 5CF8A, 5CF9A	
		5CF1B, 5CF2B, 5CF3B, 5CF4B, 5CF5B, 5CF6B, 5CF7B, 5CF8B, 5CF9B	
		5CF1C, 5CF2C, 5CF3C, 5CF4C, 5CF5C, 5CF6C, 5CF7C, 5CF8C, 5CF9C	
		5CF1D, 5CF2D, 5CF3D, 5CF4D, 5CF5D, 5CF6D, 5CF7D, 5CF8D, 5CF9D	
		5CF1E, 5CF2E, 5CF3E, 5CF4E, 5CF5E, 5CF6E, 5CF7E, 5CF8E, 5CF9E	
		5CH3A, 5CH4A, 5CH7A, 5CH8A, 5CH9A	
		5CH3B, 5CH4B, 5CH7B, 5CH8B, 5CH9B	
		5CH3C, 5CH4C, 5CH7C, 5CH8C, 5CH9C	
		5CH3D, 5CH4D, 5CH7D, 5CH8D, 5CH9D	
		5CH3E, 5CH4E, 5CH7E, 5CH8E, 5CH9E	
		5CJ2A, 5CJ3A, 5CJ4A, 5CJ5A, 5CJ6A, 5CJ7A, 5CJ8A, 5CJ9A	
		5CJ2B, 5CJ3B, 5CJ4B, 5CJ5B, 5CJ6B, 5CJ7B, 5CJ8B, 5CJ9B	
		5CJ2C, 5CJ3C, 5CJ4C, 5CJ5C, 5CJ6C, 5CJ7C, 5CJ8C, 5CJ9C	
		5CJ2D, 5CJ3D, 5CJ4D, 5CJ5D, 5CJ6D, 5CJ7D, 5CJ8D, 5CJ9D	
		5CJ2E, 5CJ3E, 5CJ4E, 5CJ5E, 5CJ6E, 5CJ7E, 5CJ8E, 5CJ9E	
	2017	6HA0A, 6HA1A, 6HA2A, 6HA3A, 6HA4A, 6HA5A, 6HA6A, 6HA7A	
		6HA0B, 6HA1B, 6HA2B, 6HA3B, 6HA4B, 6HA5B, 6HA6B, 6HA7B	
		6HA0C, 6HA1C, 6HA2C, 6HA3C, 6HA4C, 6HA5C, 6HA6C, 6HA7C	
		6HA0D, 6HA1D, 6HA2D, 6HA3D, 6HA4D, 6HA5D, 6HA6D, 6HA7D	
		6HA0E, 6HA1E, 6HA2E, 6HA3E, 6HA4E, 6HA5E, 6HA6E, 6HA7E	
		6HF0A, 6HF1A, 6HF2A, 6HF3A, 6HF4A, 6HF5A, 6HF6A, 6HF7A	
		6HF0B, 6HF1B, 6HF2B, 6HF3B, 6HF4B, 6HF5B, 6HF6B, 6HF7B	
		6HF0C, 6HF1C, 6HF2C, 6HF3C, 6HF4C, 6HF5C, 6HF6C, 6HF7C	
		6HF0D, 6HF1D, 6HF2D, 6HF3D, 6HF4D, 6HF5D, 6HF6D, 6HF7D	
		6HF0E, 6HF1E, 6HF2E, 6HF3E, 6HF4E, 6HF5E, 6HF6E, 6HF7E	
		6HG2A, 6HG3A, 6HG4A, 6HG5A, 6HG6A, 6HG7A, 6HG8A, 6HG9A	
		6HG2B, 6HG3B, 6HG4B, 6HG5B, 6HG6B, 6HG7B, 6HG8B, 6HG9B	
		6HG2C, 6HG3C, 6HG4C, 6HG5C, 6HG6C, 6HG7C, 6HG8C, 6HG9C	
		6HG2D, 6HG3D, 6HG4D, 6HG5D, 6HG6D, 6HG7D, 6HG8D, 6HG9D	
		6HG2E, 6HG3E, 6HG4E, 6HG5E, 6HG6E, 6HG7E, 6HG8E, 6HG9E	
		2018	6HB0A, 6HB0B
			6HB1A, 6HB2A, 6HB3A, 6HB4A, 6HB5A, 6HB6A, 6HB7A
			6HB1B, 6HB2B, 6HB3B, 6HB4B, 6HB5B, 6HB6B, 6HB7B
			6HB0C, 6HB1C, 6HB2C, 6HB3C, 6HB4C, 6HB5C, 6HB6C, 6HB7C
			6HD4A, 6HD5A, 6HD6A, 6HD7A, 6HD8A, 6HD9A
	6HD4B, 6HD5B, 6HD6B, 6HD7B, 6HD8B, 6HD9B		
	6HD4C, 6HD5C, 6HD6C, 6HD7C, 6HD8C, 6HD9C		
	6HJ0A, 6HJ1A, 6HJ2A, 6HJ3A, 6HJ4A, 6HJ5A, 6HJ6A, 6HJ7A, 6HJ8A, 6HJ9A		
	6HJ0B, 6HJ1B, 6HJ2B, 6HJ3B, 6HJ4B, 6HJ5B, 6HJ6B, 6HJ7B, 6HJ8B, 6HJ9B		
	6HJ0C, 6HJ1C, 6HJ2C, 6HJ3C, 6HJ4C, 6HJ5C, 6HJ6C, 6HJ7C, 6HJ8C, 6HJ9C		
2019	4GJ0A, 4GJ1A, 4GJ2A, 4GJ4A, 4GJ5A, 4GJ6A, 4GJ7A, 4GJ8A, 4GJ9A		
	4GK0A, 4GK1A, 4GK2A, 4GK3A, 4GK4A, 4GK5A, 4GK6A, 4GK7A, 4GK8A, 4GK9A		

Table A (continued)

Q60	2017	5CB0B, 5CB1B, 5CB2B, 5CB3B	
		5CB0C, 5CB1C, 5CB2C, 5CB3C	
		5CC1B, 5CC8B, 5CC9B	
		5CC0C, 5CC1C, 5CC2C, 5CC8C, 5CC9C	
		5CC0D, 5CC1D, 5CC8D, 5CC9D	
		5CC0E, 5CC1E, 5CC2E, 5CC8E, 5CC9E	
		5CG1B, 5CG5B, 5CG6B, 5CG7B, 5CG8B	
		5CG0C, 5CG1C, 5CG5C, 5CG6C, 5CG7C, 5CG8C	
		5CG0D, 5CG1D, 5CG5D, 5CG6D, 5CG7D, 5CG8D	
		5CG0E, 5CG1E, 5CG5E, 5CG6E, 5CG7E, 5CG8E	
		5CH1B	
		5CH1C, 5CH2C, 5CH5C, 5CH6C	
		5CH1D, 5CH2D, 5CH5D, 5CH6D	
		5CH1E, 5CH2E, 5CH5E, 5CH6E	
		5CJ0B, 5CJ0C, 5CJ0D, 5CJ0E	
		5CJ1B, 5CJ1C, 5CJ1D, 5CJ1E	
		5CK1B, 5CK2B, 5CK3B, 5CK4B	
		5CK1C, 5CK2C, 5CK3C, 5CK4C	
		5CK1D, 5CK2D, 5CK3D, 5CK4D	
		5CK1E, 5CK2E, 5CK3E, 5CK4E	
		5CL5B, 5CL6B, 5CL7B, 5CL8B	
		5CL5C, 5CL6C, 5CL7C, 5CL8C	
		5CL5D, 5CL6D, 5CL7D, 5CL8D	
		5CL5E, 5CL6E, 5CL7E, 5CL8E	
		5CV6A, 5CV7A, 5CV8A, 5CV9A	
		5CV6B, 5CV7B, 5CV8B, 5CV9B	
		5CV6C, 5CV7C, 5CV8C, 5CV9C	
		5CV6D, 5CV7D, 5CV8D, 5CV9D	
		5CV6E, 5CV7E, 5CV8E	
		2018	4GC6A, 4GC7A, 4GC8A, 4GC9A
			4GC7B, 4GC8B, 4GC9B
			4GC6C
			4GD2A, 4GD3A, 4GD4A, 4GD5A, 4GD6A, 4GD7A, 4GD8A, 4GD9A 4GD2B, 4GD3B, 4GD4B, 4GD5B, 4GD6B, 4GD7B, 4GD8B, 4GD9B
	4GE6A, 4GE7A, 4GE8A, 4GE9A		
	4GE6B, 4GE7B, 4GE8B, 4GE9B		
	4GF3A, 4GF3B		
	4GF6A, 4GF6B		
	4GG0A, 4GG1A, 4GG2A, 4GG3A		
	4GG0B, 4GG1B, 4GG2B, 4GG3B		
	4HL6A, 4HL7A		
	4HL6B, 4HL7B		
	2019	5CR0A, 5CR1A, 5CR2A, 5CR3A, 5CR4A, 5CR5A, 5CR6A, 5CR7A, 5CR8A, 5CR9A	
		5CS0A, 5CS1A, 5CS2A, 5CS3A, 5CS4A, 5CS5A, 5CS6A, 5CS7A	
		5CT0A, 5CT1A	

Table A (continued)

QX60	2015	9NE4A, 9NE5A, 9NE6A, 9NE7A, 9NE8A, 9NE9A
		9NE4B, 9NE5B, 9NE6B, 9NE7B, 9NE8B, 9NE9B
		9NE4C, 9NE5C, 9NE6C, 9NE7C, 9NE8C, 9NE9C
		9NE4D, 9NE5D, 9NE6D, 9NE7D, 9NE8D, 9NE9D
		9NE4E, 9NE5E, 9NE6E, 9NE7E, 9NE8E, 9NE9E
	2016	9NF0A, 9NF1A, 9NF2A, 9NF3A, 9NF4A, 9NF5A, 9NF6A, 9NF7A
		9NF0B, 9NF1B, 9NF2B, 9NF3B, 9NF4B, 9NF5B, 9NF6B, 9NF7B
		9NF0C, 9NF1C, 9NF2C, 9NF3C, 9NF4C, 9NF5C, 9NF6C, 9NF7C
	2017	3JR9A, 3JR9B
		3JS9A, 3JS9B
		6JA3A, 6JA4A, 6JA5A, 6JA7A, 6JA8A, 6JA9A
		6JA3B, 6JA4B, 6JA5B, 6JA7B, 6JA8B, 6JA9B
		6JA3C, 6JA4C, 6JA5C, 6JA7C, 6JA8C, 6JA9C
		9NC5A, 9NC6A, 9NC7A, 9NC8A, 9NC9A
		9NC5B, 9NC6B, 9NC7B, 9NC8B, 9NC9B
		9ND9A, 9ND9B
		9NJ1A, 9NJ2A
		9NJ1B, 9NJ2B
		9NJ1C, 9NJ2C
	2018	9NP0A, 9NP1A, 9NP2A, 9NP3A, 9NP4A, 9NP5A, 9NP6A, 9NP7A, 9NP8A, 9NP9A
		9NP0B, 9NP1B, 9NP2B, 9NP3B, 9NP4B, 9NP5B, 9NP6B, 9NP7B, 9NP8B, 9NP9B
		9NP0C, 9NP1C, 9NP2C, 9NP3C, 9NP4C, 9NP5C, 9NP6C, 9NP7C, 9NP8C, 9NP9C
		9PF8A, 9PF8B, 9PF8C
	2019	9NMOB, 9NM1B, 9NM2B, 9NM3B, 9NM4B, 9NM5B, 9NM6B, 9NM7B
		9NR0A, 9NR2A, 9NR3A, 9NR4A, 9NR6A, 9NR7A, 9NR8A
		9NR0B, 9NR2B, 9NR3B, 9NR4B, 9NR6B, 9NR7B, 9NR8B
		9NR0E, 9NR2E, 9NR3E, 9NR4E, 9NR6E, 9NR7E, 9NR8E

- After completing Erase ALL DTCs, print a copy of the C-III plus screen showing the before and after part numbers of the control unit and attach it to the repair order.

## CLAIMS INFORMATION

Submit a "CM" line claim using the following claims coding:

MODEL	MODEL YEAR	CAMPAIGN ("CM") ID	DESCRIPTION	OP CODE	FRT
Q50	2016	P9344	Reprogram Engine Control Module - 6-Cyl	P93441	0.5
			Reprogram Engine Control Module - 4-Cyl	P93442	0.6
			Reprogram Not Needed	P93443	0.3
Q50 and Q60	2017	P9346	Reprogram Engine Control Module - 6-Cyl	P93461	0.5
			Reprogram Engine Control Module - 4-Cyl	P93462	0.6
			Reprogram Not Needed	P93463	0.3
	2018	P9348	Reprogram Engine Control Module - 6-Cyl	P93481	0.5
			Reprogram Engine Control Module - 4-Cyl	P93482	0.6
			Reprogram Not Needed	P93483	0.3
	2019	P9350	Reprogram Engine Control Module	P93501	0.5
			Reprogram Not Needed	P93503	0.3

MODEL	MODEL YEAR	CAMPAIGN ("CM") ID	DESCRIPTION	OP CODE	FRT
QX60	2015	P9329	Reprogram Engine Control Module	P93290	0.4
			Reprogram Not Needed	P93293	0.3
	2016	P9344	Reprogram Engine Control Module	P93440	0.4
			Reprogram Not Needed	P93443	0.3
	2017	P9346	Reprogram Engine Control Module	P93460	0.4
			Reprogram Not Needed	P93463	0.3
	2018	P9348	Reprogram Engine Control Module	P93480	0.4
			Reprogram Not Needed	P93483	0.3
	2019	P9350	Reprogram Engine Control Module	P93500	0.4
			Reprogram Not Needed	P93503	0.3

## AMENDMENT HISTORY

PUBLISHED DATE	REFERENCE	DESCRIPTION
December 16, 2019	ITB19-043	Original bulletin published