



SERVICE CAMPAIGN BULLETIN

Classification: EC19-030a	Reference: NTB19-115a	Date: December 17, 2019
------------------------------	--------------------------	----------------------------

VOLUNTARY EMISSIONS SERVICE CAMPAIGN VEHICLES REGISTERED IN CALIFORNIA; ENGINE CONTROL MODULE

CAMPAIGN ID #s: P9328, P9343, P9345, P9347, and P9349

APPLIED VEHICLES:

2015-2018 Altima (L33)	2017-2018 Rogue Hybrid (T32H)
2019 Altima (L34)	2017 Rogue Sport (J11)
2015-2017 Juke (F15)	2015-2019 Pathfinder (R52)
2019 Kicks (P15)	2017-2019 Sentra (B17)
2016-2018 Maxima (A36)	2018 Versa Sedan (N17)
2015-2018 Murano (Z52)	

**Check Service COMM or Dealer Business Systems (DBS)
National Service History to confirm campaign eligibility.**

INTRODUCTION

Nissan is conducting this voluntary emissions service campaign on certain specific model year Nissan vehicles (see **APPLIED VEHICLES**) registered in the state of California. The engine control module (ECM) will be inspected, and reprogrammed if applicable. This service will be performed at no charge to the customer for parts or labor.

IDENTIFICATION NUMBER

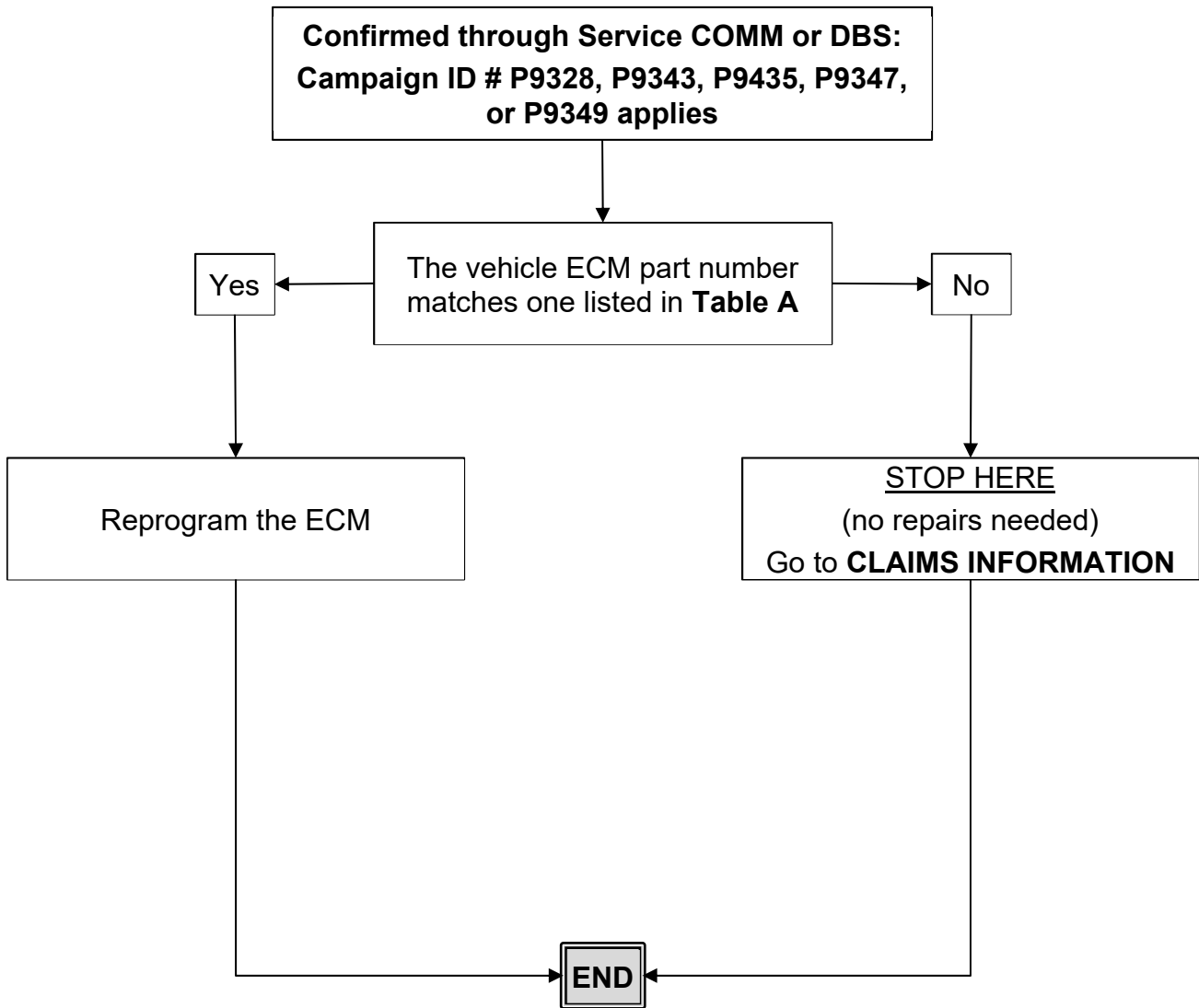
Nissan has assigned identification numbers P9328, P9343, P9345, P9347, and P9349 to this campaign. The correct number must appear on all communication and documentation of any nature dealing with this campaign.

DEALER RESPONSIBILITY

Dealers are to repair vehicles falling within range of this campaign that enter the service department. This includes vehicles purchased from private parties, vehicles presented by transient (tourists) owners, and vehicles in a dealer's inventory.

Nissan Bulletins are intended for use by qualified technicians, not 'do-it-yourselfers'. Qualified technicians are properly trained individuals who have the equipment, tools, safety instruction, and know-how to do a job properly and safely. **NOTE:** If you believe that a described condition may apply to a particular vehicle, DO NOT assume that it does. See your Nissan dealer to determine if this applies to your vehicle.

REPAIR OVERVIEW



SERVICE PROCEDURE

Reprogram the ECM

IMPORTANT: Before starting the reprogramming procedure, make sure:

- ASIST on the CONSULT PC has been synchronized (updated) to the current date.
- All CONSULT-III plus (C-III plus) software updates, if any, have been installed.
- The CONSULT PC is connected to the Internet (Wi-Fi or cable).

HINT:

- If you are not familiar with the reprogramming procedure, *click here*. This will link to the "CONSULT-III plus (C-III plus) ECM Reprogramming" general procedure.
- Take the vehicle for a 10 minute drive in order to meet the following Idle Air Volume Learn (IAVL) conditions:
 - Engine coolant temperature: 70-100°C (158-212°F)
 - Battery voltage: More than 12.9V (At idle)
 - Transmission: Warmed up
- After reprogramming is complete, it is required to perform Throttle Valve Closed Position, Idle Air Volume Learn, Accelerator Closed Position, and DTC Erase.



Figure 1

NOTICE

- Connect a battery maintainer or smart charger to the 12V battery. If the vehicle battery voltage drops below 12.0V or above 15.5V during reprogramming, the ECM may be damaged.
- Be sure to turn OFF all vehicle electrical loads. If a vehicle electrical load remains ON, the ECM may be damaged.
- Be sure to connect the AC Adapter. If the CONSULT PC battery voltage drops during reprogramming, the process will be interrupted and the ECM may be damaged.
- Turn OFF all external Bluetooth® devices (e.g., cell phones, printers, etc.) within range of the CONSULT PC and the plus VI. If Bluetooth® signal waves are within range of the CONSULT PC and the plus VI during reprogramming, reprogramming may be interrupted and the ECM may be damaged.

1. Using C-III plus, confirm the current ECM part number and write it on the repair order.
 - If it matches one of the part numbers in **Table A** below (or the next three pages), reprogram the ECM.
 - If it does not match any of the part numbers in **Table A**, no repair is needed. Go to **CLAIMS INFORMATION** on the last page of this bulletin.

Table A

MODEL	MODEL YEAR	Current ECM Part Number: 237xx-
Altima	2015	9HP6A, 9HP6B, 9HP6C, 9HP6D
		9HP7A, 9HP7B, 9HP7C, 9HP7D
	2016	9HS0A, 9HS1A, 9HS2A
		9HS0B, 9HS1B, 9HS2B
		9HS0C, 9HS1C, 9HS2C
	2017	3TG0A, 3TG1A
		3TG0B, 3TG1B
		9HT0A, 9HT1A, 9HT2A
		9HT0B, 9HT1B, 9HT2B
	2018	3NT8A, 3NT9A
		3NT8B, 3NT9B
	2019	6CA7A, 6CA9A
		6CA7B, 6CA9B
		6CA7C, 6CA9C
		6CB3A, 6CB5A, 6CB6A, 6CB8A
		6CB3B, 6CB5B, 6CB6B, 6CB8B
		6CB3C, 6CB5C
6CC0A, 6CC2A		
6CC0B, 6CC2B		

Table A (continued)

Juke	2015	3YM2A, 3YM3A, 3YM4A, 3YM5A, 3YM6A, 3YM7A
		3YM2B, 3YM3B, 3YM4B, 3YM5B, 3YM6B, 3YM7B
		3YM2C, 3YM3C, 3YM4C, 3YM5C, 3YM6C, 3YM7C
		3YM2D, 3YM3D, 3YM4D, 3YM5D, 3YM6D, 3YM7D
		3YM2E, 3YM3E, 3YM4E, 3YM5E, 3YM6E, 3YM7E
		4DT0A, 4DT1A, 4DT2A, 4DT3A, 4DT4A, 4DT5A
		4DT0B, 4DT1B, 4DT2B, 4DT3B, 4DT4B, 4DT5B
		4DT0C, 4DT1C, 4DT2C, 4DT3C, 4DT4C, 4DT5C
		4DT0D, 4DT1D, 4DT2D, 4DT3D, 4DT4D, 4DT5D
		4DT0E, 4DT1E
	2016	3PT1A, 3PT2A, 3PT3A, 3PT4A, 3PT5A, 3PT6A
		3PT1B, 3PT2B, 3PT3B, 3PT4B, 3PT5B, 3PT6B
		3PT1C, 3PT2C, 3PT3C, 3PT4C, 3PT5C, 3PT6C
		3PT1D, 3PT2D, 3PT3D, 3PT4D, 3PT5D, 3PT6D
		3PT1E, 3PT2E, 3PT3E, 3PT4E, 3PT5E, 3PT6E
	2017	1TW4A, 1TW5A, 1TW6A, 1TW7A
		1TW4B, 1TW5B, 1TW6B, 1TW7B
		1TW4C, 1TW5C, 1TW6C, 1TW7C
		3PU8A, 3PU9A
3PU8B, 3PU9B		
3PU8C, 3PU9C		
Kicks	2019	9VB0A, 9VB1A, 9VB2A, 9VB3A
Maxima	2016	4RA0A, 4RA1A, 4RA2A, 4RA3A, 4RA4A, 4RA5A, 4RA6A
		4RA1B, 4RA2B, 4RA3B, 4RA4B, 4RA5B, 4RA6B
		4RA1C, 4RA2C, 4RA3C
		4RA1D, 4RA2D
		4RA0E, 4RA1E, 4RA2E
	2017	9DD0A, 9DD1A, 9DD2A, 9DD9A
		9DD0B, 9DD1B, 9DD2B
2018	9DE1A, 9DE2A, 9DE3A, 9DE5A, 9DE6A, 9DE7A	

Table A (continued)

Murano	2015	5AA0A, 5AA3A, 5AA4A, 5AA5A
		5AA0B, 5AA3B, 5AA4B, 5AA5B
		5AA0C, 5AA3C, 5AA4C, 5AA5C
		5AA0D, 5AA3D, 5AA4D, 5AA5D
		5AA0E, 5AA3E, 5AA4E, 5AA5E
	2016	9UA0A, 9UA1A, 9UA2A, 9UA3A
		9UA0B, 9UA1B, 9UA2B, 9UA3B
		9UA0C, 9UA1C, 9UA2C, 9UA3C
	2017	9UC4A, 9UC5A, 9UC6A, 9UC7A
		9UC4B, 9UC5B, 9UC6B, 9UC7B
	2018	5BN0A, 5BN1A, 5BN2A, 5BN3A
		5BN0B, 5BN1B, 5BN2B, 5BN3B
Pathfinder	2015	9PB0A, 9PB1A
		9PB0B, 9PB1B
		9PB0C, 9PB1C
		9PB0D, 9PB1D
		9PF1A
		9PF1B
		9PF1C
	2016	9PF0A, 9PF0B, 9PF0C
	2017	6KA9A, 6KA9B, 6KA9C
		9PG0A, 9PG1A, 9PG2A, 9PG3A
		9PG0B, 9PG1B, 9PG2B, 9PG3B
		9PJ0A, 9PJ1A, 9PJ3A
		9PJ0B, 9PJ1B, 9PJ3B
		9PJ0C, 9PJ1C, 9PJ3C
	2018	9PM0A, 9PM0B, 9PM0C
		9PM1A, 9PM2A, 9PM3A, 9PM4A
		9PM1B, 9PM2B, 9PM3B, 9PM4B
		9PM1C, 9PM2C, 9PM3C, 9PM4C
	2019	9PR0A, 9PR1A, 9PR2A, 9PR3A, 9PR4A
		9PR0B, 9PR1B, 9PR2B, 9PR3B, 9PR4B
		9PR0E, 9PR1E, 9PR2E, 9PR3E, 9PR4E

Table A (continued)

Rogue Hybrid	2017	4BC2A, 4BC3A
		4BC2B, 4BC3B
	2018	7FH4A, 7FH5A
Rogue Sport	2017	6MA0A, 6MA1A, 6MA2A, 6MA3A, 6MA4A, 6MA5A, 6MA6A, 6MA7A, 6MA8A, 6MA9A
Sentra	2017	3RF8A, 3RF9A
		3RF8B, 3RF9B, 3RF8C
		3SR4A, 3SR5A
		3SR4B, 3SR5B
		3SR4C, 3SR5C
		3SR4D, 3SR5D
		3SR5E
	2018	3RP0A, 3RP1A, 3RP2A, 3RP3A
		3RP0B, 3RP1B, 3RP2B, 3RP3B
	2019	9AE1A, 9AE2A, 9AE3A, 9AE4A
Versa Sedan	2018	9KZ0B, 9KZ0C
		9KZ1B, 9KZ1C
		9KZ2B, 9KZ2C

2. After completing Erase ALL DTCs, print a copy of the C-III plus screen showing the before and after part numbers of the control unit and attach it to the repair order.

CLAIMS INFORMATION

Submit a “CM” line claim using the following claims coding:

MODEL	MODEL YEAR	CAMPAIGN (“CM”) ID	DESCRIPTION	OP CODE	FRT
Altima	2015	P9328	Reprogram Engine Control Module	P93281	0.5
			Reprogram Not Needed	P93283	0.3
	2016	P9343	Reprogram Engine Control Module	P93431	0.5
			Reprogram Not Needed	P93433	0.3
	2017	P9345	Reprogram Engine Control Module	P93451	0.5
			Reprogram Not Needed	P93453	0.3
	2018	P9347	Reprogram Engine Control Module	P93471	0.5
			Reprogram Not Needed	P93473	0.3
	2019	P9349	Reprogram Engine Control Module	P93490	0.4
			Reprogram Not Needed	P93493	0.3

MODEL	MODEL YEAR	CAMPAIGN (“CM”) ID	DESCRIPTION	OP CODE	FRT
Juke	2015	P9328	Reprogram Engine Control Module	P93281	0.5
			Reprogram Not Needed	P93283	0.3
	2016	P9343	Reprogram Engine Control Module	P93431	0.5
			Reprogram Not Needed	P93433	0.3
	2017	P9345	Reprogram Engine Control Module	P93451	0.5
			Reprogram Not Needed	P93453	0.3

MODEL	MODEL YEAR	CAMPAIGN (“CM”) ID	DESCRIPTION	OP CODE	FRT
Kicks	2019	P9349	Reprogram Engine Control Module	P93490	0.4
			Reprogram Not Needed	P93493	0.3

MODEL	MODEL YEAR	CAMPAIGN (“CM”) ID	DESCRIPTION	OP CODE	FRT
Maxima	2016	P9343	Reprogram Engine Control Module	P93430	0.4
			Reprogram Not Needed	P93433	0.3
	2017	P9345	Reprogram Engine Control Module	P93450	0.4
			Reprogram Not Needed	P93453	0.3
	2018	P9347	Reprogram Engine Control Module	P93470	0.4
			Reprogram Not Needed	P93473	0.3

CLAIMS INFORMATION (continued)

MODEL	MODEL YEAR	CAMPAIGN ("CM") ID	DESCRIPTION	OP CODE	FRT
Murano	2015	P9328	Reprogram Engine Control Module	P93280	0.4
			Reprogram Not Needed	P93283	0.3
	2016	P9343	Reprogram Engine Control Module	P93430	0.4
			Reprogram Not Needed	P93433	0.3
	2017	P9345	Reprogram Engine Control Module	P93450	0.4
			Reprogram Not Needed	P93453	0.3
	2018	P9347	Reprogram Engine Control Module	P93470	0.4
			Reprogram Not Needed	P93473	0.3

MODEL	MODEL YEAR	CAMPAIGN ("CM") ID	DESCRIPTION	OP CODE	FRT
Rogue Hybrid	2017	P9345	Reprogram Engine Control Module	P93450	0.4
			Reprogram Not Needed	P93453	0.3
	2018	P9347	Reprogram Engine Control Module	P93470	0.4
			Reprogram Not Needed	P93473	0.3

MODEL	MODEL YEAR	CAMPAIGN ("CM") ID	DESCRIPTION	OP CODE	FRT
Rogue Sport	2017	P9345	Reprogram Engine Control Module	P93452	0.6
			Reprogram Not Needed	P93453	0.3

MODEL	MODEL YEAR	CAMPAIGN ("CM") ID	DESCRIPTION	OP CODE	FRT
Pathfinder	2015	P9328	Reprogram Engine Control Module	P93280	0.4
			Reprogram Not Needed	P93283	0.3
	2016	P9343	Reprogram Engine Control Module	P93430	0.4
			Reprogram Not Needed	P93433	0.3
	2017	P9345	Reprogram Engine Control Module	P93450	0.4
			Reprogram Not Needed	P93453	0.3
	2018	P9347	Reprogram Engine Control Module	P93470	0.4
			Reprogram Not Needed	P93473	0.3
	2019	P9349	Reprogram Engine Control Module	P93490	0.4
			Reprogram Not Needed	P93493	0.3

CLAIMS INFORMATION (continued)

MODEL	MODEL YEAR	CAMPAIGN ("CM") ID	DESCRIPTION	OP CODE	FRT
Sentra	2017	P9345	Reprogram Engine Control Module	P93450	0.4
			Reprogram Not Needed	P93453	0.3
	2018	P9347	Reprogram Engine Control Module	P93470	0.4
			Reprogram Not Needed	P93473	0.3
	2019	P9349	Reprogram Engine Control Module	P93490	0.4
			Reprogram Not Needed	P93493	0.3

MODEL	MODEL YEAR	CAMPAIGN ("CM") ID	DESCRIPTION	OP CODE	FRT
Versa Sedan	2018	P9347	Reprogram Engine Control Module	P93470	0.4
			Reprogram Not Needed	P93473	0.3

AMENDMENT HISTORY

PUBLISHED DATE	REFERENCE	DESCRIPTION
December 16, 2019	NTB19-115	Original bulletin published
December 17, 2019	NTB19-115a	Corrected one of the campaign ID #s on page 1