

Technical product information

Topic	Replacing front wishbone links
Market area	Bentley: worldwide (2WBE),Hongkong-Macau (5HK)
Brand	Bentley
Transaction No.	2043974/1
Level	EH
Status	Approval
Release date	

New customer code

Object of complaint	Complaint type	Position
Running gear -> Wheels, tyres, tyre pressure monitoring -> Tyres -> Tyre tread	visual appeal / surface -> bump	> not specified <
Running gear -> Steering, power-assisted steering -> Steer	Noise, vibration -> vibrate	
Running gear -> Steering system	functionality	
Running gear -> Steering system	Noise, vibration	
Running gear -> Wheels, tyres, tyre pressure monitoring -> Tyres	component / consumables -> incorrectly built	

New workshop code

Object of complaint	Complaint type	Position
Running gear -> Wheels, tyres, tyre pressure monitoring -> Tyres	component / consumables -> unbalanced	rear right
Running gear -> Wheels, tyres, tyre pressure monitoring -> Tyres	component / consumables -> unbalanced	front right
Running gear -> Wheels, tyres, tyre pressure monitoring -> Tyres	component / consumables -> unbalanced	front left
Running gear -> Wheels, tyres, tyre pressure monitoring -> Tyres	component / consumables -> unbalanced	rear left
Running gear -> Wheels, tyres, tyre pressure monitoring -> Tyres	component / consumables -> incorrectly built	> not specified <

Vehicle data

AllNewContinentalandFlyingSpur

Sales types

Type	MY	Brand	Designation	Engine code	Gearbox code	Final drive code
39*	2012	E		*	*	*
39*	2013	E		*	*	*
39*	2014	E		*	*	*
39*	2015	E		*	*	*
39*	2016	E		*	*	*
4W2*	2014	E		*	*	*
4W2*	2015	E		*	*	*
4W2*	2016	E		*	*	*

Chassis numbers

Manufacturer	Filler	Type	Filler	MY	Factory	From	To	Prod from	Prodto
SCB	***	**	*	*	*	000001	057117		

Documents

Document name
master.xml

Customer statement / workshop findings

Front wishbone link requires replacement (lower lever).

Technical background

Only 'new' specification front rearward lower levers are available (containing U3 bush)

The differences are as shown in Figures 1,2 and 3

Figure 1, shows a lower lever with the original type bush fitted (U1 bush)

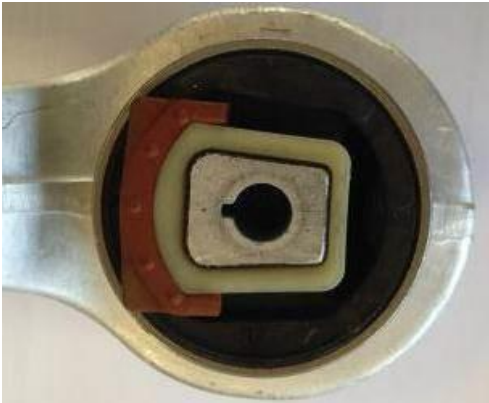


Figure 1

Figure 2, shows a lower lever with the latest specification bush fitted (U3 bush)



Figure 2

- Figure 3, shows the difference from the opposing side
- A is the original U1 bush equipped lower lever (non tapered)
- B is the new specification U3 equipped lower lever (with tapered ends)

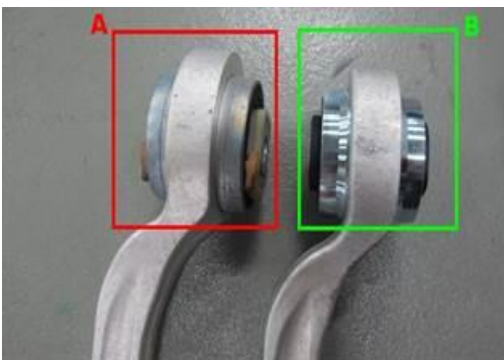


Figure 3

Production change

-

Measure

Only lower levers containing U3 bush are now available

If it is necessary to fit a replacement lower lever then ensure on completion that these levers have the same bush type do not fit U1 and U3 equipped lower levers on the same vehicle

This means in the event of a lower lever replacement:

A vehicle fitted with original lower levers containing U1 bush will require both the left and right hand side lower levers to be replaced.

If the vehicle is currently fitted with the new specification lower levers containing the U3 bush then a single lower lever can be replaced when technically appropriate

This document is not intended to influence any technical decision made to change suspension elements in pairs when ensuring bush compliance characteristics are maintained across an axle

Parts information

Description	Part Number	Quantity
Front wishbone link (Lower lever left) U3	3W0 407 693A	1
Front wishbone link (Lower lever right) U3	3W0 407 694A	1