

ATTENTION:

GENERAL MANAGER
 PARTS MANAGER
 CLAIMS PERSONNEL
 SERVICE MANAGER

IMPORTANT - All Service Personnel Should Read and Initial in the boxes provided, right.

© 2019 Subaru of America, Inc. All rights reserved.



QUALITY DRIVEN® SERVICE

SERVICE INFORMATION BULLETIN

APPLICABILITY: 2018MY Legacy and Outback w/8-inch Navi System
 2017-18MY Impreza with 8-inch Navi System
 2018MY Crosstrek with 8-inch Navi System
 2018MY BRZ with 7-inch Navi System

NUMBER: 15-254-19R

DATE: 11/08/19

REVISED: 01-28-20

SUBJECT: Map Data Update Procedure for Harman Gen 3.0 Navigation Equipped Head Units (H/U)

INTRODUCTION:

On August 23rd, 2018, the first TomTom map update for Gen 3.0 Harman navigation equipped vehicles was made available. While the map update process is user-friendly, we ask that retailers assist customers with the map update procedure when requested as a courtesy, an opportunity to build retailer loyalty, enhance customer satisfaction and in keeping with the Love Promise. Retailers may also want to install this map update on any certified pre-owned or pre-owned vehicles in their inventory on their own. The site (dealer.subaru-maps.com) which is unique for retailers, is not the same as what customers will be accessing at home. If Service, Sales, and/or Parts Managers do not have a login, create an account from this page. There may be a short delay while retailer approval is pending.

Materials Required:

1. A PC or MAC computer / laptop
2. A valid e-mail address
3. USB 2.0 or 3.0 drive, at least 16GB in size (recommended device brands: SanDisk®, Kingston®, Transcend® or Verbatim®)
4. TSB 15-211-17R for reference.

SERVICE PROCEDURE / INFORMATION:

CAUTION: NEVER attempt to install this software update on any 2019 or 2020 MY vehicles as they are equipped with Gen 3.1 Navigation systems. This update is **ONLY** for models equipped with **Gen 3.0** Navigation systems. Should an attempt be made to install any of these files into a Gen 3.1 H/U, the USB Authentication error screen below will be displayed.

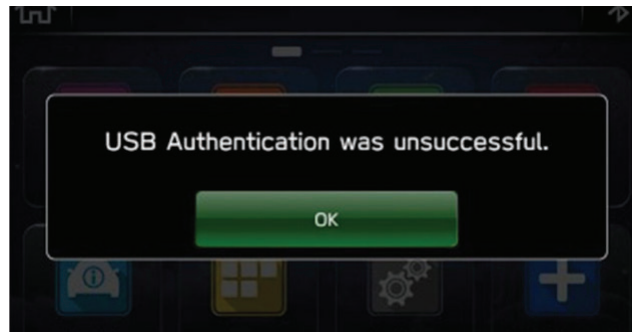
CAUTION: VEHICLE SERVICING PERFORMED BY UNTRAINED PERSONS COULD RESULT IN SERIOUS INJURY TO THOSE PERSONS OR TO OTHERS.

Subaru Service Bulletins are intended for use by professional technicians ONLY. They are written to inform those technicians of conditions that may occur in some vehicles, or to provide information that could assist in the proper servicing of the vehicle. Properly trained technicians have the equipment, tools, safety instructions, and know-how to do the job correctly and safely. If a condition is described, DO NOT assume that this Service Bulletin applies to your vehicle, or that your vehicle will have that condition.

Subaru of America, Inc. is ISO 14001 Compliant

ISO 14001 is the international standard for excellence in Environmental Management Systems. Please recycle or dispose of automotive products in a manner that is friendly to our environment and in accordance with all local, state and federal laws and regulations.

Continued...



- The USB Authentication error screen will also be displayed when attempting to install the map data bundled with a software version older than the version already installed in the H/U.
- Move the vehicle to an outside location where the engine can be safely started and kept idling during the update process.
- Never idle the vehicle in a closed space such as a garage, even if the garage door is open.
- Once the vehicle is in a safe location, be sure the vehicle is in Park if CVT or Neutral if MT and the parking brake is fully engaged.
- Unplug any cables or devices from the USB ports.

NOTE: The update process involves downloading and installing the software update so, time duration will depend on communication and available data transfer rate. During the update installation, H/U functionality will be restricted.

These updates are applicable to the following vehicles and Navigation equipped H/U part numbers:

- **Legacy / Outback:** 86471AL65A and AL66A
- **Impreza / Crosstrek:** 86271FL60A
- **BRZ:** 86271CA670

The **POST-UPDATE** software version ID is **Rel_A1.19.45.20** for all applicable models.

Step 1: Prepare the USB with the Map Data:

- a) Go to **dealer.subaru-maps.com**.
- b) Create an account. A valid email address is required to complete this process.
- c) Download and install the Map Downloader application for Mac or PC using the link provided on subaru-maps.com.
- d) Open the app and login with the newly-created account information.
- e) Press the “+” button on the bottom right to add a vehicle using the customer’s VIN.
- f) Click the UPDATES tab to check for any available updates. If an update is available, click START to begin the download. **NOTE:** These updates might take some time to complete as the map files are large and data transfer rates vary.
- g) When the download is complete, plug the USB drive into the PC. Click “START INSTALLATION”. **NOTE:** All existing data on the USB will be deleted.
- h) Once complete, properly EJECT / REMOVE the USB device from the PC and proceed to the vehicle.

Continued...

Step 2. H/U Map Update:

- a) Follow the Service Procedure provided in TSB **15-211-17R**: Step 1 and Steps 5-9 as applicable to update the H/U.

IMPORTANT REMINDERS:

- SOA strongly discourages the printing and/or local storage of service information as previously released information and electronic publications may be updated at any time.
- Always check for any open recalls or campaigns anytime a vehicle is in for servicing.
- Always refer to STIS for the latest service information before performing any repairs.

Continued...