

From: [REDACTED]
To: [REDACTED]
Cc: [REDACTED]
Subject: Data Tag Campaign Rework Instruction and Customer Locations
Date: Friday, January 10, 2020 10:13:04 AM
Attachments: [Data Tag Rework Procedure Jan 2020.docx](#)

Team,

Please share the information attached with the Contacts to rework the Data Tags. Use the breakout of customer names in the campaign folder:

[REDACTED]

Data Tag Rework Procedure:

The current data tags that are on the engines listed will need to be replaced. There is missing data in the fields of the tag.

Materials: Data Tags and Rivets

Instructions:

1. Remove discrepant data tag from the engine.
 - a. Be careful to avoid breaking the rivet when removing.
2. Destroy the old discrepant tag using tin snips. Cut the tag in half so that it is unusable.
3. Install the replacement tag matching the original orientation of the tag.
4. Document that the engine was found and the tag replaced.
5. Send updated list back to the RMEP contact with the update on engines.

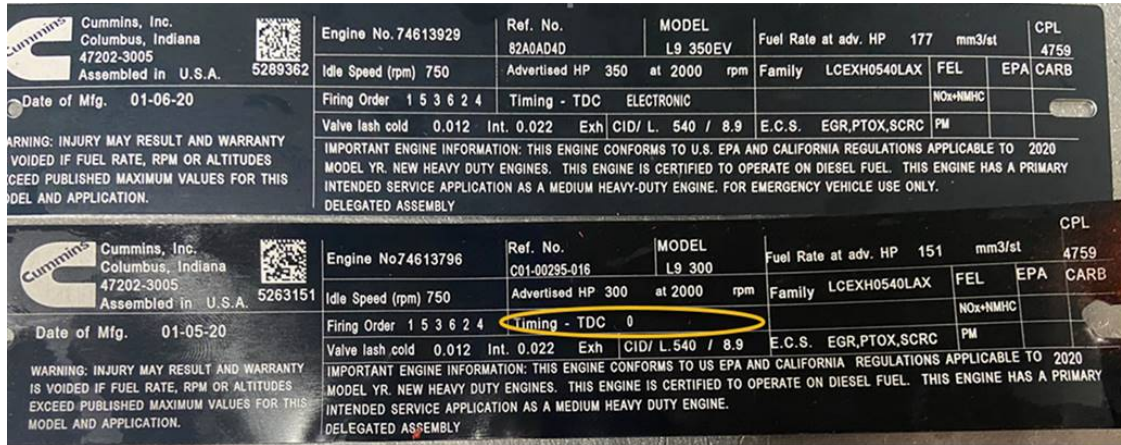
Regards,

[REDACTED]
Customer Quality Assurance Manager
Cummins Inc.
Rocky Mount Engine Plant
9377 N US Highway 301
Whitakers, NC 27891

[REDACTED]

Data Tag Rework Procedure:

The current data tags that are on the engines listed will need to be replaced. There is missing data in the fields of the tag.



Materials: Data Tags and Rivets

Instructions:

1. Remove discrepant data tag from the engine.
 - a. Be careful to avoid breaking the rivet when removing.
 - b. If rivet is broken use a #47/64 drill bit to drill out the rivet from the gear housing.
2. Destroy the old discrepant tag using tin snips. Cut the tag in half so that it is unusable.
3. Install the replacement tag matching the original orientation of the tag.
4. Document that the engine was found and the tag replaced.
5. Send updated list back to the RMEP contact with updated information. Need to know which engines were found and which have already left the Customer.