

<b>Subject:</b> A/C And Coolant Lines Interference In The Main Evap Compartment			
<b>Field Change Program:</b> Procedure	<b>Procedure Number:</b> 16-42	<b>Revision:</b> A	<b>Date:</b> 02/22/2020
<b>Coach Section:</b> 16-Heating and A/C	<b>P/N:</b> 16-06-1639		<b>Type:</b> Product Improvement

### Application:

Coach Model	Model Year	VIN
J4500	2019 - 2020	69200 - 69781
D45CRT-LE	2019 - 2020	81000 - 81080

## **WARNING**

*Read this entire procedure before beginning work.*

*Use Safe Shop Practices at All Times.*

*To avoid personal injury:*

- a. Proper Personal Protective Equipment (PPE) must be worn. Safety glasses and protective gloves are required for working with DEF Fluid.*
- b. Turn the main battery disconnect switch to the OFF position.*
- c. Ensure that both the front and the rear wheels are chocked.*
- d. Position the ENGINE RUN and ENGINE START switches on the engine compartment remote control box to the OFF position.*
- e. Allow enough time for components to cool down prior to working in the engine compartment.*

## 1.0 Description

This procedure outlines the steps to space out the condenser discharge and heater coolant lines.

## 2.0 Material requirements

ITEM	PART NO	QTY	U/M	DESCRIPTION
1	19-4-94	2	EA	Clamp-Line Support,Neoprene Covered,53/64 ID
2	19-03-0737	2	EA	Nut-Flanged,3/8-16,GR8,STL
3	19-01-1516	1	EA	Capscrew-Flanged,3/8-16x1.25,Gr 8,Zn Pltd

## 3.0 Special tools

Aluminum foil tape.

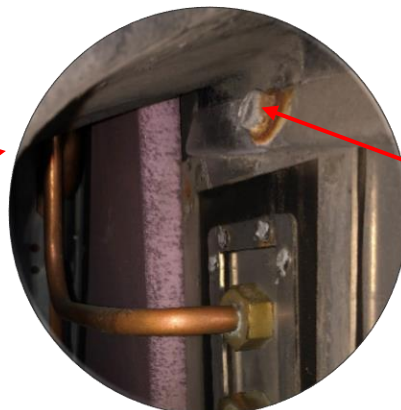
## 4.0 Procedure

Remove the evaporator door in the Baggage Bay #3 compartment..



Remove and save the evaporator door

Remove and save the bolt securing the LH HVAC blower duct.



Remove and save the bolt

Remove and discard the aluminum foil tape on the LH HVAC blower duct.



Remove and discard the aluminum foil tape

Remove and save the 4 screws and washers securing the blower duct.



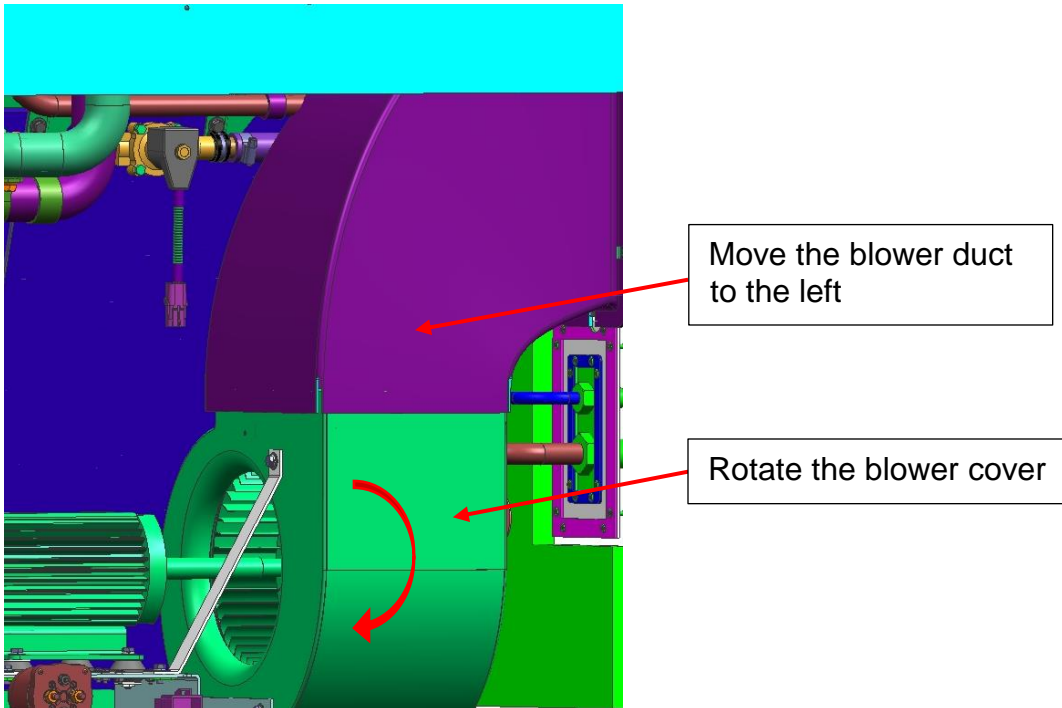
Remove and save the screws and washers

Remove and save the 3 screws, washers and lock washers securing the LH blower.

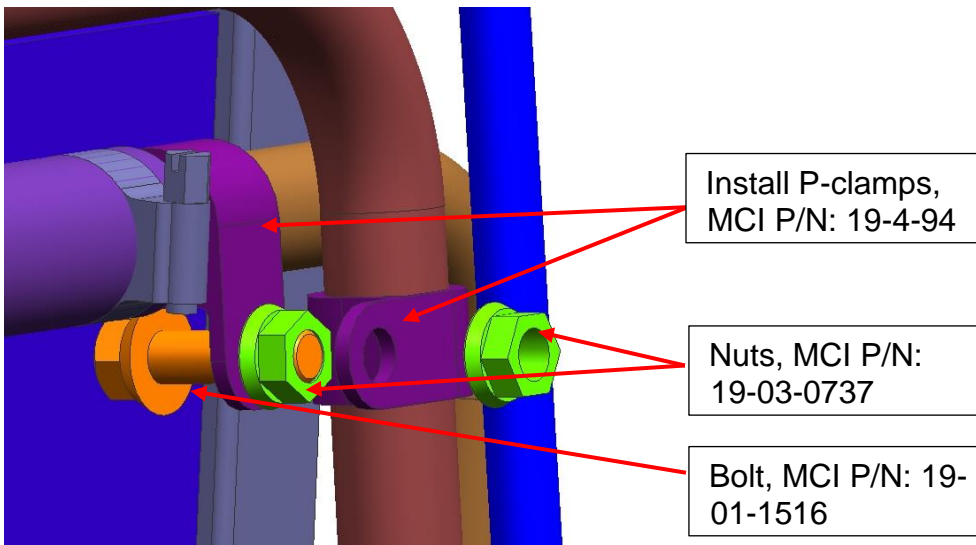


Remove and save the screws, lock washers and washers

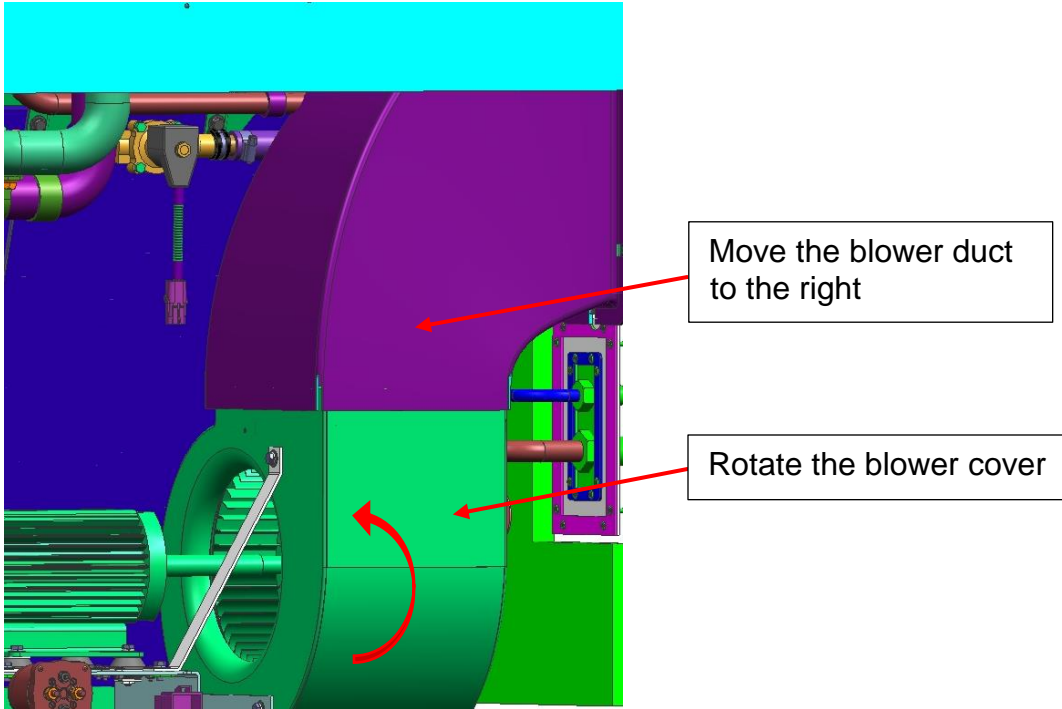
Move the blower duct to the left and rotate the blower cover to gain access to the refrigerant tubes.



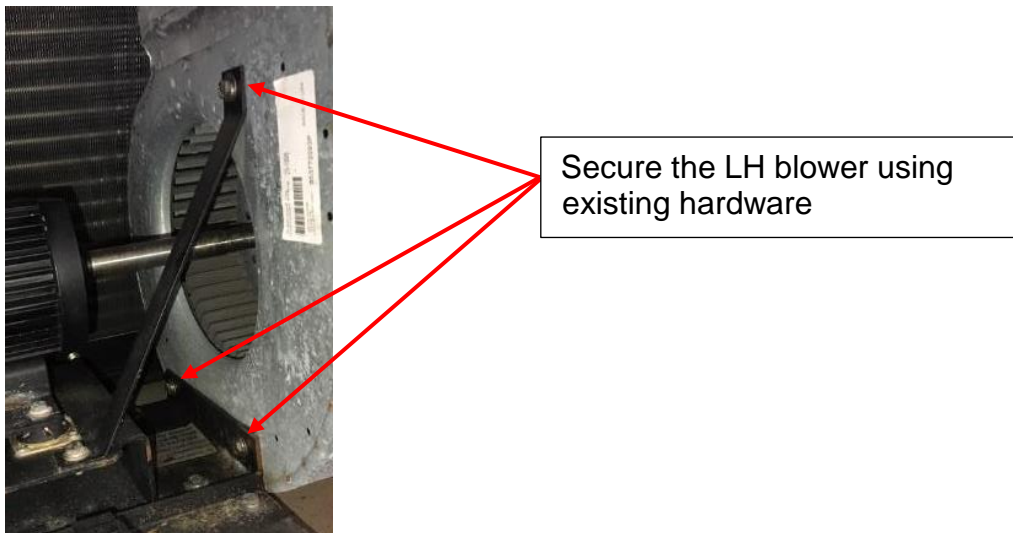
Install two p-clamps to the refrigerant tubes using bolt, MCI P/N: 19-01-1516, and nuts, MCI P/N: 19-03-0737, as shown below.



Rotate the blower cover and move the blower duct to the right.



Secure the LH blower using existing screws, washers and lock washers.





Secure the blower duct using existing 4 screws and washers.



Secure the blower duct using existing hardware

Install aluminum foil tape on the LH HVAC blower duct.



Install aluminum foil tape

Secure the blower duct using existing bolt.



Secure the blower duct using existing hardware

**End of the procedure**