



No.: 20CSA-04
March 17, 2020

TO: Service Locations
FROM: Service Diagnostics and Tools
SUBJECT: **Release of DiagnosticLink® 8.11 Service Pack 3**

SUBJECT DETAIL

On Thursday, March 19, 2020, Service Pack (SP) 3 for DiagnosticLink® 8.11 Standard and Professional will be available for download from the Detroit Diesel server. This update includes the following:

- Update for CPC5 boot version check.
- Updated ABS02T CBF file to support information display of up to five axles.
- Update to ABS instrumentation panel to display additional axles.

IMPORTANT NOTE: You must have DiagnosticLink 8.11 Standard or Professional to receive SP3.

DiagnosticLink 8.10 and earlier versions will not receive this service pack.

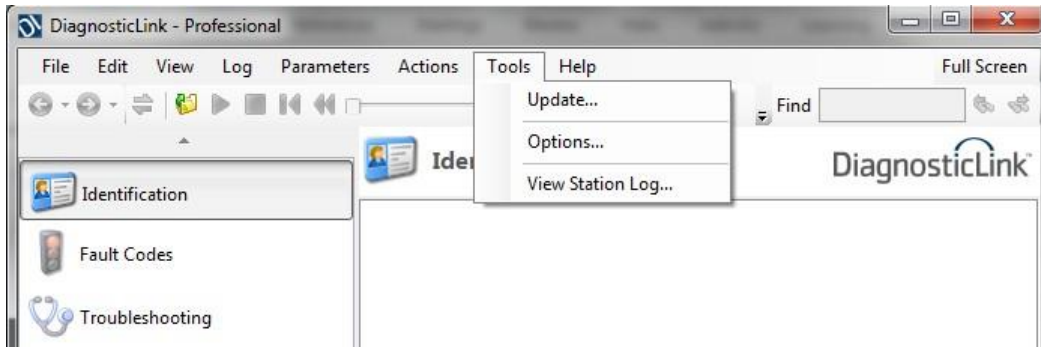
On Thursday, November 21, 2019, the DiagnosticLink 8.11 software tool was released to the service network. In order to maintain access to the Detroit server data, all Master Reprogramming Stations must be kept updated with the current version of DiagnosticLink software to avoid any interruptions.

UPDATE INSTRUCTIONS

NOTE: You must have DiagnosticLink 8.11 installed on your computer prior to applying this patch.

SP3 will automatically download when you connect to the DDC server. Please do the following:

1. Open DiagnosticLink software.
2. From the Tools drop-down menu, select **Update**.



3. A screen will display showing the progress of the download. Follow the installation prompts to complete the download.
4. Verify that the patch has been applied by selecting **About** from the **Help** dropdown menu. Verify the following:

Application Components
DiagnosticLink **08.11SP3-xxxxx-xxxxx**

MANUAL UPDATE

A download link is available that allows manual downloading and installation of the DiagnosticLink 8.11 SP3 patch for advanced users and system administrators. To access, login to <https://dtnacontent-dtna.prd.freightliner.com> and proceed to secure content. Expand **Tools & Services** and select **Service Diagnostics & Tools**. Open the DiagnosticLink page and proceed to the download section.

CONTACT INFORMATION

Please contact the Detroit Customer Support Center at 800-445-1980 or email csc.software@daimler.com if you have any questions.