



SERVICE CAMPAIGN BULLETIN

Classification: EC20-006	Reference: NTB20-021	Date: March 24, 2020
-----------------------------	-------------------------	-------------------------

VOLUNTARY SERVICE CAMPAIGN ENGINE CONTROL MODULE

CAMPAIGN ID #:	PC734, PM940, P0A05
APPLIED VEHICLES:	2019 Armada (Y62) 2019-2020 GT-R (R35) 2019-2020 GT-R NISMO (R35) 2019-2020 NV200 (M20) 2019 NV200 Taxi (M20T) 2019 NV Cargo and Passenger (F80) 2019 Sentra (B17) 2019 Titan (A61) 2019 Titan XD (A61)

**Check Service COMM or Dealer Business Systems (DBS)
National Service History to confirm campaign eligibility.**

INTRODUCTION

Nissan is conducting this voluntary service campaign on certain specific model year 2019 Armada, 2019-2020 GT-R, 2019-2020 GT-R NISMO, 2019-2020 NV200, 2019 NV200 Taxi, 2019 NV Cargo and Passenger, 2019 Sentra, and 2019 Titan and Titan XD vehicles. The Engine Control Module (ECM) will be inspected, and reprogrammed if it applies. This service will be performed at no charge to the customer for parts or labor.

IDENTIFICATION NUMBER

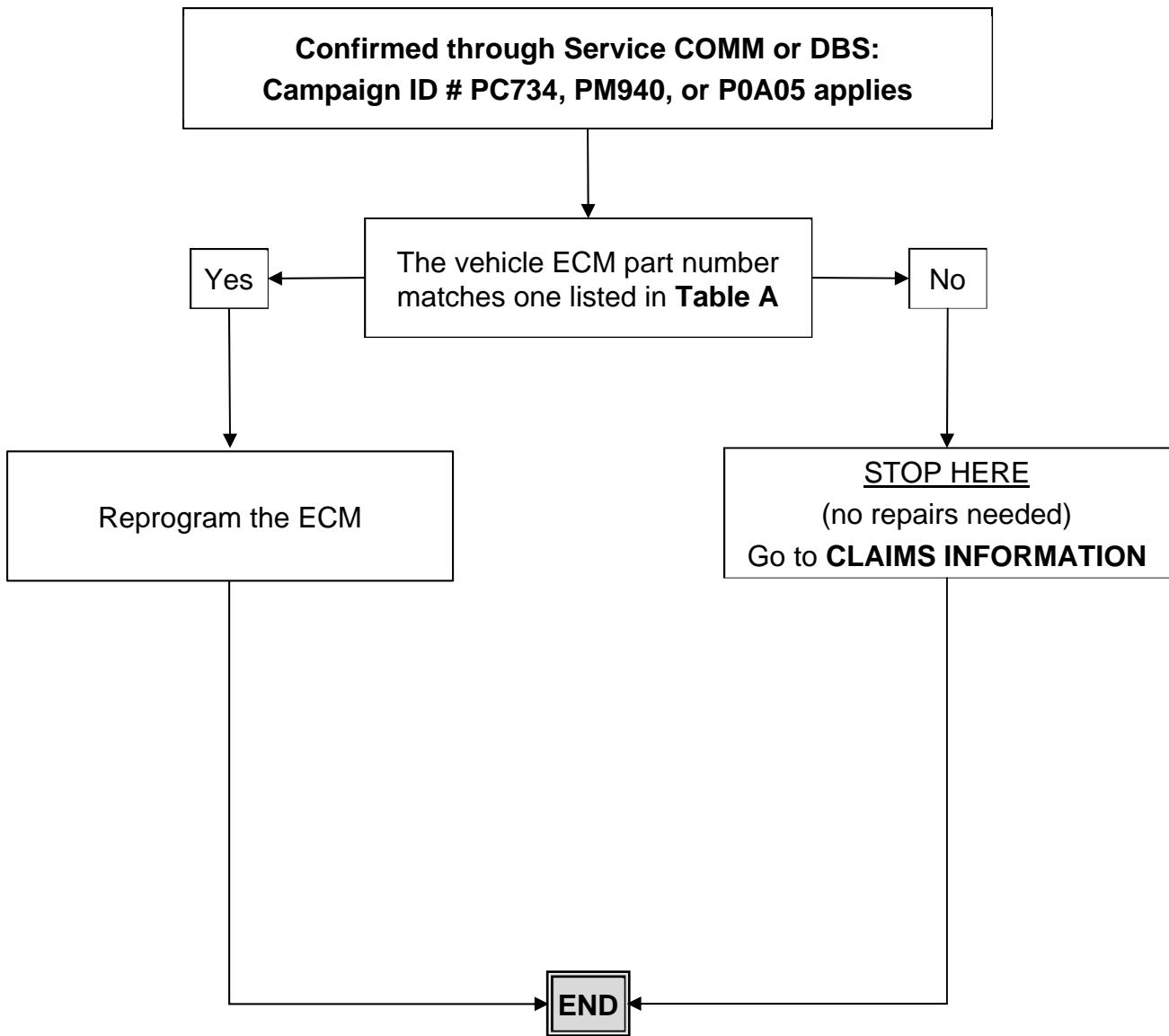
Nissan has assigned identification numbers PC734, PM940, and P0A05 to this campaign. This number must appear on all communication and documentation of any nature dealing with this campaign.

DEALER RESPONSIBILITY

Dealers are to repair vehicles falling within range of this campaign that enter the service department. This includes vehicles purchased from private parties, vehicles presented by transient (tourists) owners, and vehicles in a dealer's inventory.

Nissan Bulletins are intended for use by qualified technicians, not 'do-it-yourselfers'. Qualified technicians are properly trained individuals who have the equipment, tools, safety instruction, and know-how to do a job properly and safely. **NOTE:** If you believe that a described condition may apply to a particular vehicle, DO NOT assume that it does. See your Nissan dealer to determine if this applies to your vehicle.

REPAIR OVERVIEW



SERVICE PROCEDURE

1. Using C-III plus, confirm the current ECM part number and write it on the repair order.
 - If it matches one of the part numbers in Table A, below, proceed to step 2 on the next page.
 - If there is not a match, no repair is needed. Go to **CLAIMS INFORMATION** on the last page.

Table A

MODEL	YEAR	CURRENT ECM PART NUMBER 23710-
Armada	2019	6JD0B, 6JD0C, 6JD0E, 6JD1B, 6JD1C, 6JD1E
GT-R	2019	6HP3A, 6HP3B, 6HS0A, 6HS0B
	2020	6HT2B, 6HT3B
GT-R NISMO	2019	6HR6A, 6HR6B
	2020	45S1A
NV200	2019	9SL0A, 9SL0B, 9SL0C, 9SL1A, 9SL1B, 9SL1C 9SL4A
	2020	9SM0B, 9SM0C, 9SM1B, 9SM1C
NV200 Taxi	2019	9SL4A
NV Cargo	2019	9JL2A, 9JL2B, 9JL2C, 9JL2D 9JL3A, 9JL3B, 9JL3C, 9JL3D
NV Passenger	2019	9JL0A, 9JL0B, 9JL0C, 9JL0D 9JL1A, 9JL1B, 9JL1C, 9JL1D
Sentra	2019	9AR2A, 9AR2B, 9AR3A, 9AR3B, 9AR4A, 9AR4B 9AR5A, 9AR5B, 9AR6A, 9AR6B, 9AR7A, 9AR7B 9AR8A, 9AR8B
Titan and Titan XD	2019	9FU1B, 9FU1C, 9FU1D, 9FU3B, 9FU3C, 9FU3D EZ61B, EZ61C, EZ61D, EZ63B, EZ63C, EZ63D

REPROGRAM THE ECM

IMPORTANT: Before starting the reprogramming procedure, make sure:

- ASIST on the CONSULT PC has been synchronized (updated) to the current date.
- All CONSULT-III plus (C-III plus) software updates (if any) have been installed.
- The CONSULT PC is connected to the Internet (Wi-Fi or cable).

NOTE:

- If you are not familiar with the reprogramming procedure, *click here*. This will link you to the "CONSULT- III plus (C-III plus) ECM Reprogramming" general procedure.

NOTICE

- Connect a battery maintainer or smart charger to the 12V battery. If the vehicle battery voltage drops below 12.0V or above 15.5V during reprogramming, the ECM may be damaged.
- Be sure to turn OFF all vehicle electrical loads.
If a vehicle electrical load remains ON, the ECM may be damaged.
- Be sure to connect the AC Adapter.
If the CONSULT PC battery voltage drops during reprogramming, the process will be interrupted and the ECM may be damaged.
- Turn OFF all external Bluetooth® devices (e.g., cell phones, printers, etc.) within range of the CONSULT PC and the plus VI. If Bluetooth® signal waves are within range of the CONSULT PC or the plus VI during reprogramming, reprogramming may be interrupted and the ECM may be damaged.

2. Reprogram the ECM.
3. After completing Erase ALL DTCs, print a copy of the C-III plus screen showing the before and after part numbers of the control unit and attach it to the repair order.

ECM Recovery

Do not disconnect the plus VI or shut down C-III plus if reprogramming does not complete.

If reprogramming does not complete and the “!?” icon displays as shown in Figure 1:

- Check battery voltage (12.0 - 15.5 V).
- Ignition is ON, engine OFF.
- External Bluetooth® devices are OFF.
- All electrical loads are OFF.
- **Select retry and follow the on screen instructions.**
- “Retry” may not go through on first attempt and can be selected more than once.

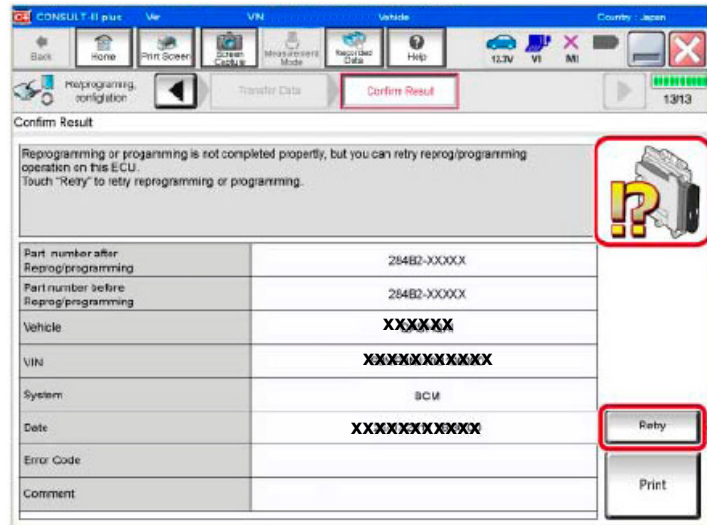


Figure 1

If reprogramming does not complete and the “X” icon displays as shown in Figure 2:

- Check battery voltage (12.0 - 15.5 V).
- CONSULT A/C adapter is plugged in.
- Ignition is ON, engine OFF.
- Transmission is in Park.
- All C-III plus / VI cables are securely connected.
- All C-III plus updates are installed.
- **Select Home, and restart the reprogram procedure from the beginning.**

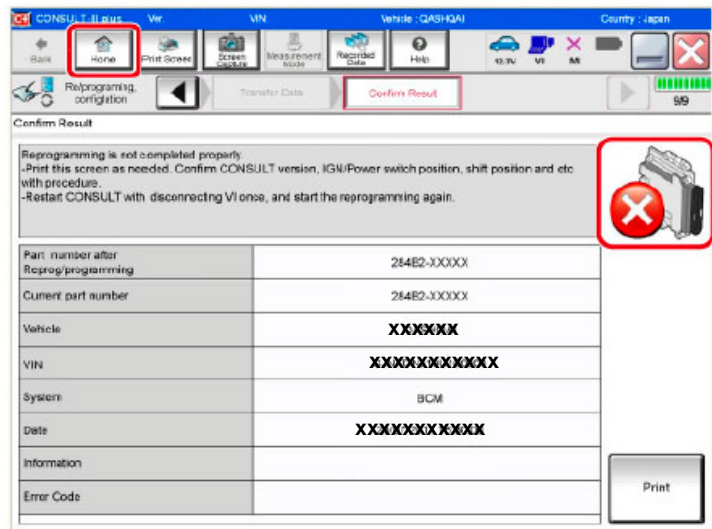


Figure 2

CLAIMS INFORMATION

Submit a “CM” line claim using the following claims coding:

CAMPAIGN (“CM”) ID	MODEL	DESCRIPTION	OP CODE	FRT
PC734	Titan, Titan XD, NV Cargo and Passenger	Reprogram Engine Control Module	PC7340	0.4 hrs
	Titan, Titan XD, NV Cargo and Passenger	Reprogram Not Needed	PC7341	0.3 hrs
PM940	Sentra	Reprogram Engine Control Module	PM9400	0.4 hrs
	NV200 and NV200 Taxi		PM9401	0.5 hrs
	Sentra	Reprogram Not Needed	PM9404	0.3 hrs
	NV200 and NV200 Taxi		PM9405	0.3 hrs
P0A05	Armada	Reprogram Engine Control Module	P0A050	0.5 hrs
	GT-R and GT-R NISMO		P0A051	0.6 hrs
	Armada, GT-R, and GT-R NISMO	Reprogram Not Needed	P0A052	0.3 hrs

AMENDMENT HISTORY

PUBLISHED DATE	REFERENCE	DESCRIPTION
March 24, 2020	NTB20-021	Original bulletin published

