

# Paint Blistering Due to Corrosion on Lower Door Sill

**Service Category** Vehicle Exterior

**Section** Paint/Coatings

**Market** USA

Toyota Supports  
 ASE Certification 

## Applicability

YEAR(S)	MODEL(S)	ADDITIONAL INFORMATION
2007 - 2020	Tundra	

## Introduction

Some 2007 – 2020 model year Tundra vehicles may exhibit corrosion or paint blistering on the front and/or rear lower door sill(s). Follow the Repair Procedure in this bulletin to address this condition.

## Warranty Information

OP CODE	DESCRIPTION	TIME	OFF	T1	T2
BD1918	Sublet to Body Shop to Repaint Door Sill(s)*, Apply Quarter Panel Protector (Clear Flange Tape), and Install Door Sill Protector (if equipped). (One Door)	0.5	61411-0C0** 61412-0C0** 61611-0C0** 61612-0C0**	67	99
Combo A	Each Additional Door	0.4			

\*Use typical body shop sublet type "ZZ Other" for repainting of front and/or rear lower door sill(s).

### APPLICABLE WARRANTY

- This repair is covered under the Toyota Basic Warranty. This warranty is in effect for 36 months or 36,000 miles, whichever occurs first, from the vehicle's in-service date.
- Warranty application is limited to occurrence of the specified condition described in this bulletin.
- Choose the correct OFF for the vehicle being repaired by searching panels in EPC using EPC VIN filter. Warranty claims must be submitted with correct OFF with 10 digits.

## Paint Blistering Due to Corrosion on Lower Door Sill

---

### Parts Information

PART NUMBER		PART NAME	QTY
PREVIOUS	NEW		
N/A	58745-0C040	Protector, Quarter Panel, FR RH (Front Doors of All Cab Types) (Rear Doors of Crew Max)	**
N/A	58747-0C030	Protector, Quarter Panel, RR RH (Rear Doors of Double Cab)	
PT747-##### *		Door Sill Protectors	

\*Only order replacement door sill protectors if the vehicle had them originally. Refer to the Electronic Parts Catalog to confirm specific part number by VIN.

\*\*Only order one quarter panel protector and one door sill protector per door that is being repaired.

### Required Tools & Equipment

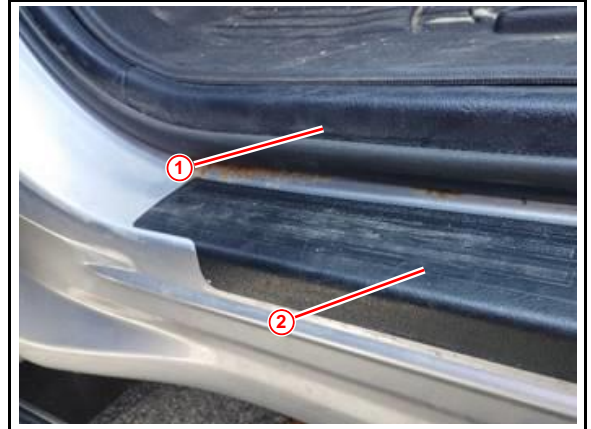
REQUIRED TOOLS & MATERIAL	QUANTITY
Rubbing Alcohol	1
Clean Shop Rag	1

## Paint Blistering Due to Corrosion on Lower Door Sill

### Repair Procedure

1. Confirm the condition exists.  
Is there corrosion or paint blistering on the surface of ANY lower door sill?
  - **YES** — Proceed to step 2.
  - **NO** — This bulletin does NOT apply. Continue diagnosis using the applicable Repair Manual.

**Figure 1.**



<b>1</b>	Door Scuff Plate
<b>2</b>	Door Sill Protector

**Figure 2.**



<b>1</b>	Kick Panel
----------	------------

**Figure 3.**



## Paint Blistering Due to Corrosion on Lower Door Sill

---

### Repair Procedure (continued)

2. Sublet the vehicle to a body shop to repaint the door sill(s).
  - A. If the vehicle has door sill protectors installed, remove the door sill protectors on the affected door BEFORE painting. A NEW door sill protector MUST be ordered and installed AFTER the vehicle has been repainted.
  - B. Remove the door open trim weather strip.
  - C. If burrs are present on the top of the pinch weld flange, sand down the burrs BEFORE repainting.
  - D. Repaint the lower door sill(s) following the paint manufacturer's system specifications.
  - E. AFTER repainting, continue to step 3.
  
3. Install the NEW door sill protector (if equipped) by using the applicable accessory installation instructions from the list below:
  - [2014-2020 Tundra Door Sill Protectors \(PT747-34142 \(Regular Cab\), PT747-34143 \(Double-Cab\), PT747-34144 \(Crew Max-Cab\)\) Rev. A](#)
  - [2014 Tundra Door Sill Protectors \(Platinum\) PT747-42140 \(Platinum\) Rev. A](#)
  - [2007 Tundra Door Sill Protectors PT747-3406X Rev. B](#)
  - [2010-2013 Tundra Platinum Door Sill Protectors PT747-34100 \(Crew Max-Cab\) Rev. C](#)
  - [2008-2011 Tundra Door Sill Protectors PT747-34073 \(Regular-Cab\), PT747-34074 \(Double Cab\), And PT747-34075 \(Crew Max-Cab\) Rev. A](#)
  - [2010-2013 Tundra Door Sill Protectors PT747-34102 \(Regular-Cab\), PT747-34103 \(Double Cab\), And PT747-34104 \(Crew Max-Cab\) Rev. B](#)
  - [2001-2007 Tundra Door Sill Applique PT747-34010](#)

## Paint Blistering Due to Corrosion on Lower Door Sill

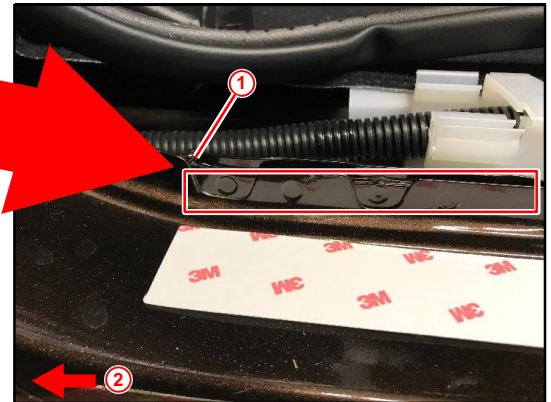
### Repair Procedure (continued)

4. Apply the quarter panel protector (clear flange tape).
  - A. Remove the plastic door scuff plate and kick panel. Remove the lower half of the door open trim weatherstrip.
  - B. With a clean rag and rubbing alcohol, remove ANY debris or dirt from the outer, upper, and inner portions of the lower door sill flange.
  - C. Center the clear flange tape over the lower door sill flange. Do NOT overlap the door sill protector and the clear flange tape.
    - (1) For all affected front doors, apply the clear flange tape over the pinch weld flange. Align the front most part of the tape with the front most flange bowl as shown.

**Figure 4.**



**Figure 5.**



<b>1</b>	<b>Front-most Flange Bowl</b>
<b>2</b>	<b>Front</b>

## Paint Blistering Due to Corrosion on Lower Door Sill

---

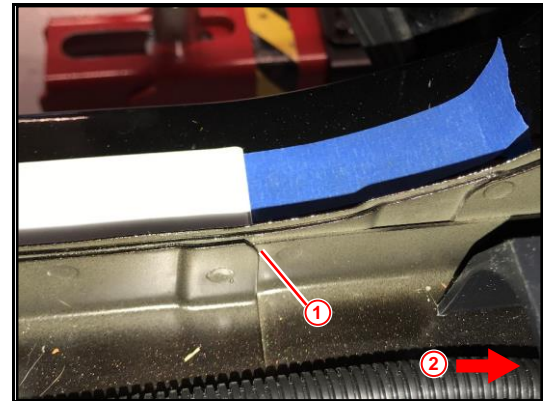
### Repair Procedure (continued)

- (2) For double cab rear doors, align the front of the clear flange tape with the inner flange sheet metal edge as shown.

**Figure 6. Left Rear Door Sill for Double Cab**



**Figure 7. Inside-looking-out View**



<b>1</b>	<b>Align Tape With the Leading Flange Edge</b>
<b>2</b>	<b>Front</b>

## Paint Blistering Due to Corrosion on Lower Door Sill

### Repair Procedure (continued)

- (3) For crew max rear doors, align the front of the clear flange tape with the bend in the flange as shown.

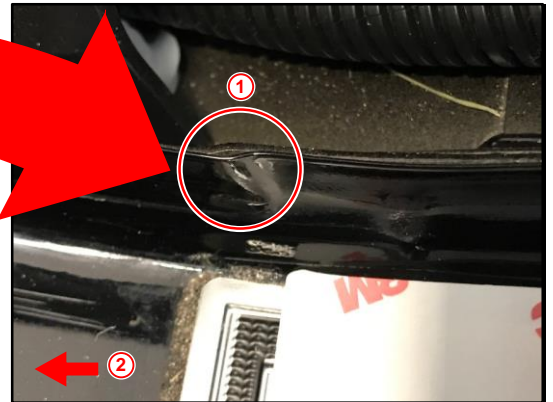
**Figure 8. Left Rear Door Sill for Crew Max**



**Figure 9.**



**Figure 10.**



<b>1</b>	<b>Align Clear Tape With Flange</b>
<b>2</b>	<b>Front</b>

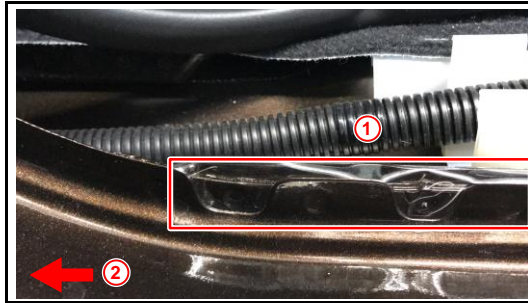
- D. Wet out (press out air bubbles) the front side of the flange, starting from the bottom and working up. Do NOT allow ANY air bubbles or wrinkles, especially on the front side of the flange.

## Paint Blistering Due to Corrosion on Lower Door Sill

### Repair Procedure (continued)

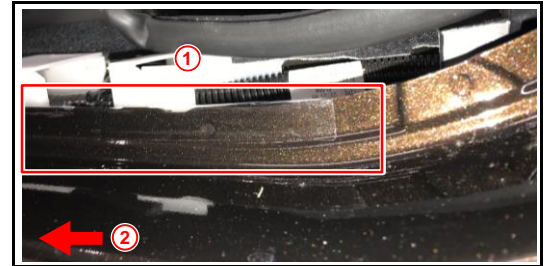
- E. Continue to install the flange tape to the front, top, and back side of the flange, making sure NO air bubbles or wrinkles are present.

**Figure 11.**



<b>1</b>	<b>Clear Flange Tape Installed</b>
<b>2</b>	<b>Front</b>

**Figure 12.**



<b>1</b>	<b>Clear Flange Tape Installed</b>
<b>2</b>	<b>Front</b>

- F. Reinstall the door open trim weatherstrip.

- G. Reinstall the door scuff plate.