

PARTS CIRCULAR

Attention: Parts Manager
Inventory

April 20th, 2020

Special Notice SM 26-2020:

- **04E-906-036-AL (Injector)**

In order to promptly receive your credit and to improve the level of parts that reach your customers:
Please return your inventory of the above-listed material numbers to your facing PDC, **no later than 6/22/2020.**

Return all parts prior to the 276th day of 2019.

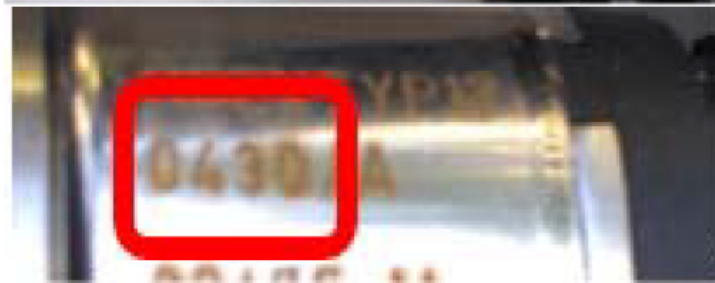


Beispiel Fertigungsdatum/
example production date

TTTJ / DDDY

1909

190 = Tag im Jahr / day of the year
9 = Jahr 2019 / Year 2019



TTTJ / DDDY

0430

043 = Tag im Jahr / day of the year
0 = Jahr 2020 / Year 2020

Your cooperation in using the following claims procedures is appreciated:

1. File a separate "Claim with Return" selecting "Dir Sup. Req. Return" under item type, completing your dealer comments with the Special Notice Number and Parts Circular number referenced above
2. Review Parts On Command the following day for the Delivery List document; contact your facing PDC with any problems or delays
3. Enter your 4000XXXXX delivery document number on a YELLOW DEPOT REQUEST RETURN label
4. Adhere the YELLOW DEPOT REQUEST RETURN label to the package(s) containing the returned parts
5. Include one copy of the Delivery Document with the returned part(s).

Items returned after the above-mentioned date WILL NOT be accepted on any type of return/buyback.

Please re-order required new materials using the **same part number**.