



## Remanufactured Engine Label Replacement

### Service

**Category:** Engine

**Section:** Engine Label

**Technician Skill Level** C

**Market** North America

---

### Applicability

#### Mack

Years	Models	Additional Information
2003 - 2016	CH, CT, CX, GU, LE, MR	Engine Serial # Label

### Description

Mack Trucks has identified that certain model trucks may have installed a Re-manufactured engine with an incorrect Engine Serial # Label. Follow the campaign instructions to order and install a new Engine Serial # Label.



## Remanufactured Engine Label Replacement

---

### Claiming Information

<b>This repair is covered by an authorized Service Program Campaign. Reimbursement is obtained through the normal claim handling process.</b>		
Claim Type (used only when uploading from the Dealer Bus. Sys.)		<b>40</b>
<b>Primary Labor Code</b>	<b>Description</b>	<b>Hours</b>
1720-16-09-01	Campaign, General (0.1 hr. x qty. 3 - Replace Label)	0.3
<b>Expiration Date</b>	<b>May 31, 2021</b>	
<b>Causal Part</b>	<b>23353955</b>	
<b>Authorization Number</b>	<b>S7496</b>	

### Parts Information

Engine	Part Names	Part Numbers	Qty.
All	Reman Engine Label	N/A (Use VIN)	<b>1</b>

**\* Label will be provided at No Charge.**

### Parts Ordering Information

An email is required to order parts list. Email [campaign@macktrucks.com](mailto:campaign@macktrucks.com) and include the following in the body of the email:

- VIN of vehicle being repaired
- Dealer ID number
- Campaign Number

A response will be provided within 2 hrs. (Monday-Friday 8am to 5pm EST.)

### Required Tools & Equipment

- N/A

### Calibration Information

## Remanufactured Engine Label Replacement

---

- N/A

### Repair Procedure

1. Remove old label completely (Image #1), and clean surface of any adhesive residue using a suitable cleaner (Image #2)
2. Allow surface to dry completely and apply new label to same position/location as the removed label.

Image #1

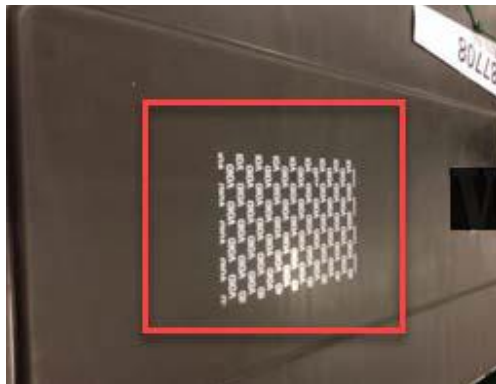
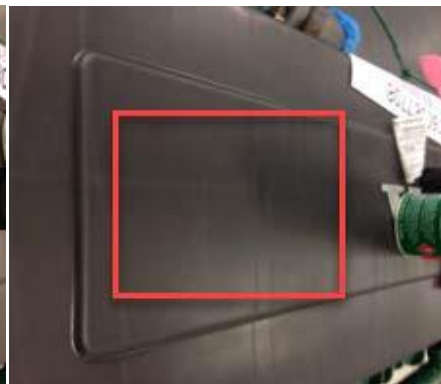


Image #2



### NOTE

Images are for reference only, label location may vary per Engine Emission Level, always apply label to original label location.