



**Solution K31126441**

**Thursday, May 28, 2020 1:51:37 PM CEST**

**\*\* SOLUTION \*\***

**Title** Mack Chassis - Granite Models (GU, GR) - Hood Warpage: Hood Warped, Dented, Divot Near Center Of Hood - MY 2016 And Newer

**Mack Models**

**Mack Model** GU - Granite

**\*\* SOLUTION \*\***

**Cause** Warpage of the hood may be experienced on certain Mack Granite chassis manufactured for model years 2016 and newer.

**Solution** Affected models will have an appearance similar to the one shown in the circled area in the example below.




**Affected Area**

It has been determined that an increase of lateral structural hood support is required to correct this issue.

## Parts And Materials

Part Number	Description
82172316	Upper Section (Support, RH)
82151844	Upper Section (Support, LH)

Product	Information
Lord Fusor® T21 Composite Adhesive (Slow)	

## Repair

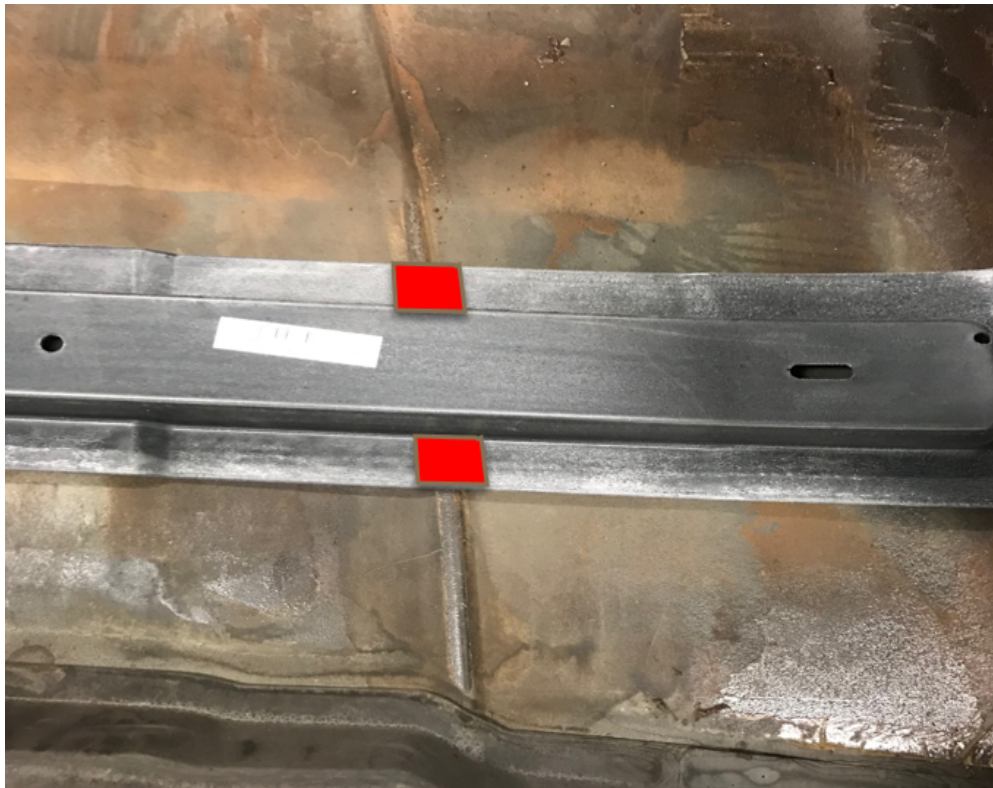
1. Remove the hood, rotate the hood upside down, and support all 4 corners.



2. The new supports should be positioned approximately 18 inches (45 cm) from the rear edge of the hood.



3. Notch each of the support sections where they pass over the grooved sections on each side of the hood. One groove and the areas to be trimmed out around it are shown in the photo below:



4. Install the new hood support using Lord Fusor® T21 Composite Adhesive. Add weight evenly across the new hood support to hold it firmly to the hood. Cure time is 4 hours.



5. Once the composite adhesive has cured a body shop can complete the rework of the underside of the hood and the paint repair.

Solution visibility      **Dealer distribution**

---

### Function Group

Function Group      821 engine hood, cover with assembly parts

---

### Customer effect

Main customer effect      visual appearance

Visual appearance      distortion

---

### Administration

Author      A241298

Dealer ID      A241298

Last modified by      A241298

Creation date      05-03-2020 18:03

Date of last update      13-05-2020 20:05

Status      Published

---

UNCONTROLLED COPY. Printed document is for temporary use only and should not be retained.