

ATTENTION:

- GENERAL MANAGER
- PARTS MANAGER
- CLAIMS PERSONNEL
- SERVICE MANAGER

IMPORTANT - All Service Personnel Should Read and Initial in the boxes provided, right.

© 2020 Subaru of America, Inc. All rights reserved.



QUALITY DRIVEN® SERVICE

SERVICE INFORMATION BULLETIN

APPLICABILITY: 2004-20MY WRX and WRX STI
2013-20MY BRZ

NUMBER: 06-76-20

DATE: 05/26/20

SUBJECT: Brembo Brake Calipers- Special Servicing Precautions

INTRODUCTION:

This Service Information Bulletin provides precautions to follow when servicing the Brembo brake calipers utilized on the models listed above. Because of their aluminum construction, it is CRITICAL to take extra care when servicing.



PART INFORMATION:

IMPORTANT REMINDER: When needed, always order the most up-to-date replacement hardware based on the specific VIN being repaired. This is especially important for the caliper bolts referenced below as different bolts are used for different model years.

SERVICE PROCEDURE / INFORMATION:

REMINDER: Customer satisfaction and retention starts with performing quality repairs. The service procedures for brake caliper removal and installation remain unchanged. Additional precautions to follow are supplied below. Always refer to the applicable Service Manual and review the full requirements of the repair being performed. The Service Manual procedures contain information critical to performing an effective repair the first time and every time. This includes but is not limited to: important SAFETY precautions, proper inspection criteria, necessary special tools, required processes and related one-time-use parts needed for a complete and lasting repair.

- When caliper assembly removal is necessary, it is CRITICAL to inspect the threads of the retaining bolts closely before reinstallation. If inspection reveals the surface coating of the bolt threads is peeling or otherwise damaged, the affected bolt(s) MUST be replaced to prevent damaging the threads in the aluminum caliper body as shown in the example photos below.

CAUTION: VEHICLE SERVICING PERFORMED BY UNTRAINED PERSONS COULD RESULT IN SERIOUS INJURY TO THOSE PERSONS OR TO OTHERS.

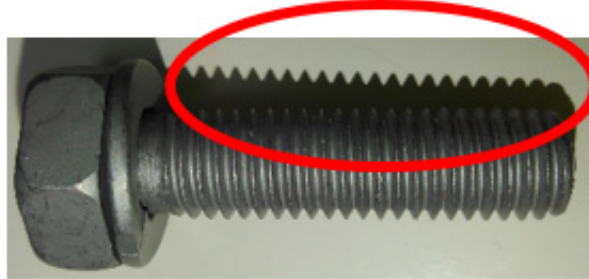
Subaru Service Bulletins are intended for use by professional technicians ONLY. They are written to inform those technicians of conditions that may occur in some vehicles, or to provide information that could assist in the proper servicing of the vehicle. Properly trained technicians have the equipment, tools, safety instructions, and know-how to do the job correctly and safely. If a condition is described, DO NOT assume that this Service Bulletin applies to your vehicle, or that your vehicle will have that condition.

Subaru of America, Inc. is ISO 14001 Compliant

ISO 14001 is the international standard for excellence in Environmental Management Systems. Please recycle or dispose of automotive products in a manner that is friendly to our environment and in accordance with all local, state and federal laws and regulations.

Continued...

NOTE: If the mounting bolt threads in the caliper are damaged, the caliper assembly must be replaced.



- When re-mounting the calipers, tighten both retaining bolts **CAREFULLY BY HAND** and **EVENLY** until the underside of the bolt heads bottom against the bracket. Once both bolts are fully installed against the mounting bracket, proceed with final torquing to the specified values as listed in the applicable Service Manual.

NOTE: Additional Brembo-specific disc brake servicing procedures and precautions relating to brake hose replacement are supplied in **TSB 06-64-18**.

IMPORTANT REMINDERS:

- SOA strongly discourages the printing and/or local storage of service information as previously released information and electronic publications may be updated at any time.
- Always check for any open recalls or campaigns anytime a vehicle is in for servicing.
- Always refer to STIS for the latest service information before performing any repairs.