



# Technical Service Bulletin

Technical Service Bulletin: TSB200113	Released Date: 13-May-2020
Spark Plug Severe Duty Cycle Introduction	

## Spark Plug Severe Duty Cycle Introduction

### Warranty Statement

The information in this document has no effect on present warranty coverage or repair practices, nor does it authorize TRP or Campaign actions.

### Contents

#### Product Affected

- ISX12 G CM2180 EJ
- ISX12N CM2380 X120B

#### Description of Change

- Spark plug service intervals are now based on vehicle duty cycle.
- “Severe” and “Normal” duty cycles have been defined for the affected engines. Spark Plug Change, and Ignition Coil Check intervals have been established based on the associated vehicle’s duty cycle.

#### Reason for Change

More demanding duty cycles result in increased spark plug wear, resulting in a reduction of spark plug life. This results in misfire and other issues as the spark plugs wear out.

#### Customer Communication

- A new “Severe” duty cycle has been established. Operators whose vehicles fall into the new Severe duty cycle **must** adhere to the associated spark plug change interval.
- Duty Cycle is determined based on Average Engine Load. This may be obtained using the recommended Cummins® electronic service tool or equivalent. The example below uses INSITE™ electronic service tool. The Average Engine Load value is displayed in the “Other” sub-folder within the “All Trips (Cumulative)” folder in the “Features and Parameters” section.
- Duty Cycle limits and definitions, as well as specific spark plug intervals are given in the respective engine’s Operation and Maintenance Manual.

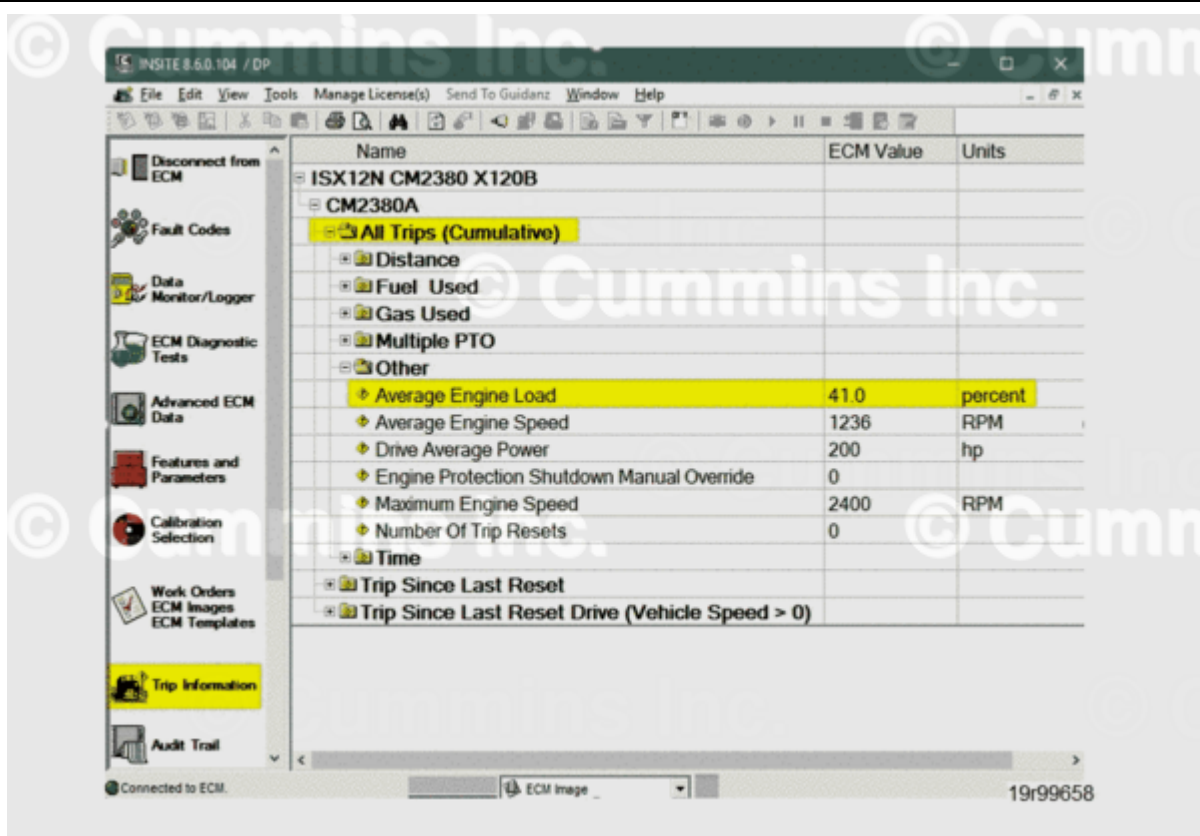


Figure 1, Average Engine Load as Viewed in INSITE™ Electronic Service Tool.

### Service Instructions

- The Spark Plug Change, and Ignition Coil Check procedures have been combined in the Operation and Maintenance manuals.
- The new spark plug intervals have been added to the Operation and Maintenance manuals.

### Publications Affected

Table 1, Publications Affected					
Manual Type	Engine	Bulletin Number	Procedure Title	Procedure	Section
Operation and Maintenance	ISX12 G CM2180 EJ	4310683	Maintenance Intervals	Refer to Procedure 102-002 (/qs3/pubsys2/xml/en/procedures/181/181-102-002-om.html)	2

<b>Table 1, Publications Affected</b>					
<b>Manual Type</b>	<b>Engine</b>	<b>Bulletin Number</b>	<b>Procedure Title</b>	<b>Procedure</b>	<b>Section</b>
Operation and Maintenance	ISX12N CM2380 X120B	5504153	Routine Maintenance Schedule	Refer to Procedure 359-001 (/qs3/pubsys2/xml/en/procedures/525/525-359-001.html)	3
Operation and Maintenance	ISX12 G CM2180 EJ	4310683	Spark Plug and Ignition Coil (Non Shielded)	Refer to Procedure 013-091 (/qs3/pubsys2/xml/en/procedures/181/181-013-091.html)	5, 6
Operation and Maintenance	ISX12N CM2380 X120B	5504153	Spark Plug and Ignition Coil (Non Shielded)	Refer to Procedure 013-091 (/qs3/pubsys2/xml/en/procedures/525/525-013-091.html)	3
Operation and Maintenance	ISX12N CM2380 X120B	5504153	Spark Plug and Ignition Coil (Non-Shielded) Intervals	Refer to Procedure 359-023 (/qs3/pubsys2/xml/en/procedures/525/525-359-023.html)	3

## Document History

<b>Date</b>	<b>Details</b>
2020-5-13	Module Created

---

**Last Modified: 13-May-2020**

---