



GROUP
BOD

MODEL
Multiple Listed
Models

NUMBER
208

DATE
June 2020

TECHNICAL SERVICE BULLETIN

SUBJECT:

PARTIAL REPAIR – TRUNK LATCH

This bulletin provides the procedure to perform a partial repair on the trunk latch base sub assembly on the specific models listed below, which may exhibit a difficult to close/latch concern with the trunk lid. Failure to follow the procedure outlined in this bulletin can result in a warranty claim chargeback for unnecessary replacement of the complete trunk lid latch assembly.

Model Year	Model	Doors
2017 - 2018	Forte (YDm)	4 Door Models Only
2017 - 2018	Rio (SC)	
2016 - 2020	Optima (JF/JFa)	
2012 - 2017	Rio (UB)	

Note: 5 Door vehicles are not included in this partial repair



Power Trunk Latch Assembly Shown

Printed TSB copy is for reference only; information may be updated at any time.
Always refer to KGIS for the latest information.

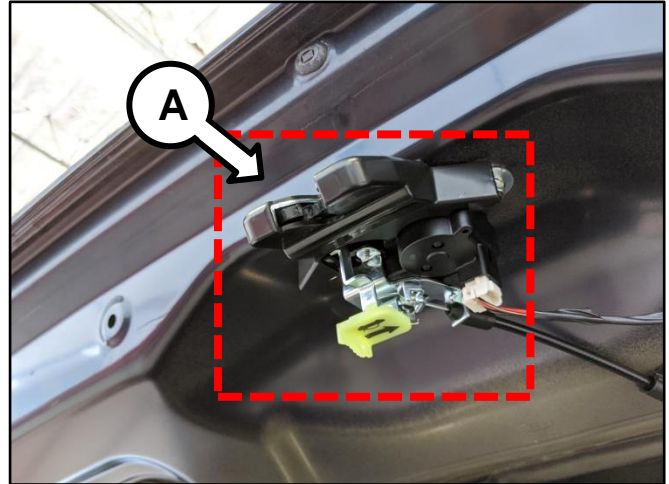
Circulate To: General Manager Service Manager Parts Manager
 Service Advisors Technicians Body Shop Manager Fleet Repair

Repair Procedure:1. **Optima (JF/JFa), Forte (YDm), and Rio (SC):**

Remove the trunk lid latch assembly (A) by referring to the “Body (Interior and Exterior) → Trunk Lid → Trunk Lid Latch → Repair procedures” chapter in the applicable Shop Manual on KGIS.

Rio (UB):

Remove the trunk lid latch assembly (A) by referring to the “Body (Interior and Exterior) → Exterior → Trunk Lid → Repair procedures (Trunk Lid Latch Replacement)” chapter in the applicable Shop Manual on KGIS.

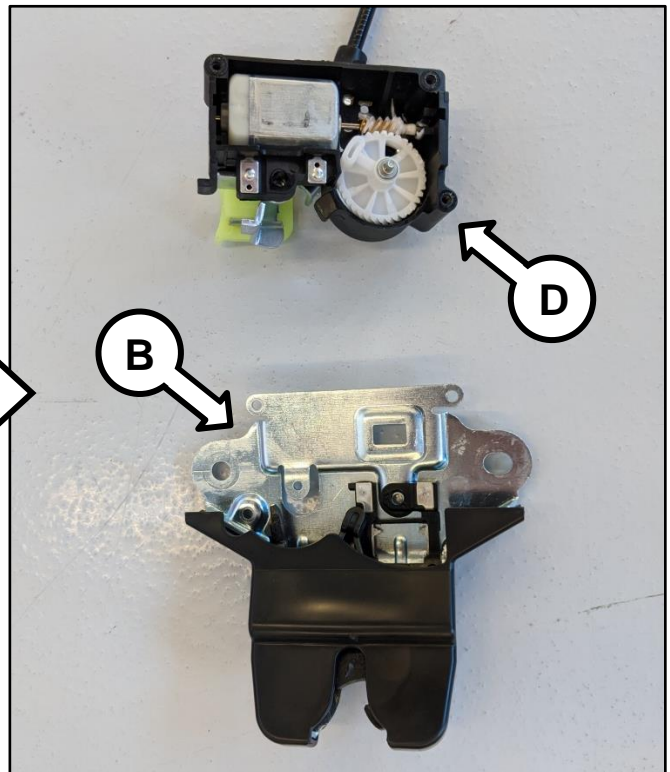
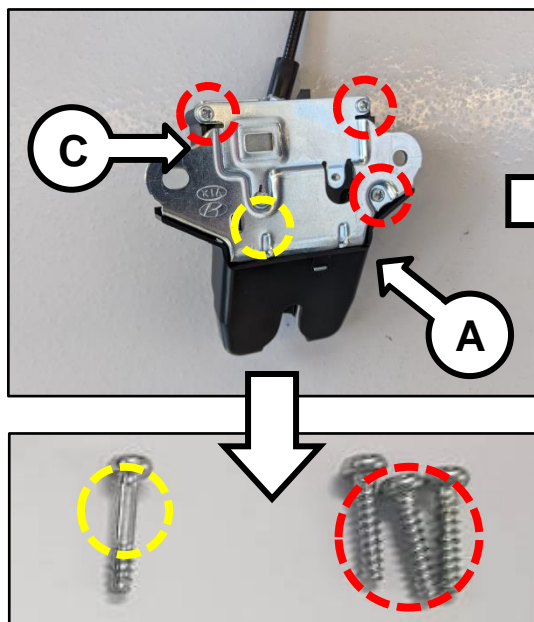


Note: Optima (JFa) is shown for demonstration purpose only throughout the outlined procedure.

❗ IMPORTANT

Replace the trunk latch base sub assembly (B) with the improved part. Reuse the actuator/motor housing sub assembly (D). One (1) of the four (4) retaining screws is partially threaded; see notice below.

2. Remove the four (4) trunk latch (A) base sub assembly (B) screws (C) and separate the actuator/motor housing sub assembly (D) from the base sub assembly.



Note: Discard the removed base sub assembly (B).

*** NOTICE**

Optima (JFa) and Rio (UB, SC) one (1) of the (4) screw has a long shank and is partially threaded. Forte (YDm) has 5 identical screws (not shown).

SUBJECT:

PARTIAL REPAIR – TRUNK LATCH

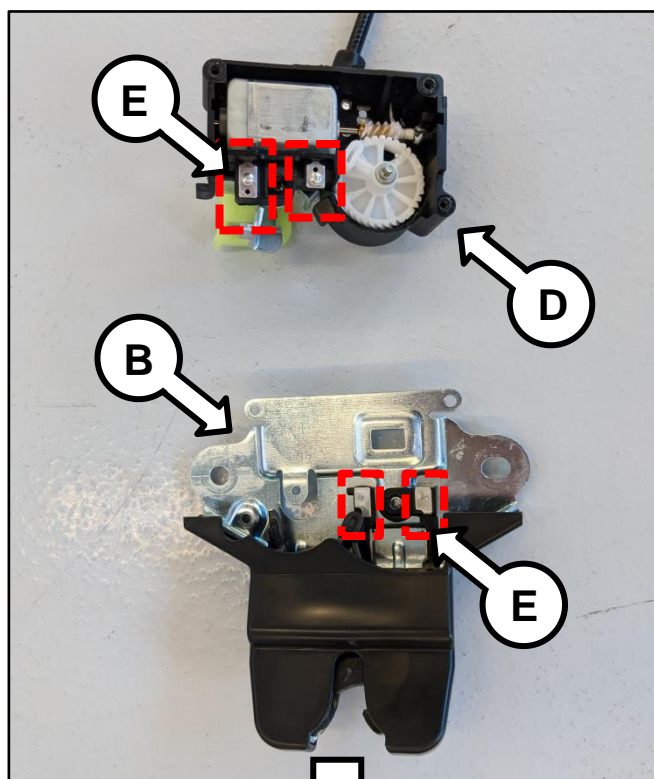
3. Assemble the trunk latch assembly using the **new** base sub assembly (B) in the same reverse order of removal.

*** NOTICE**

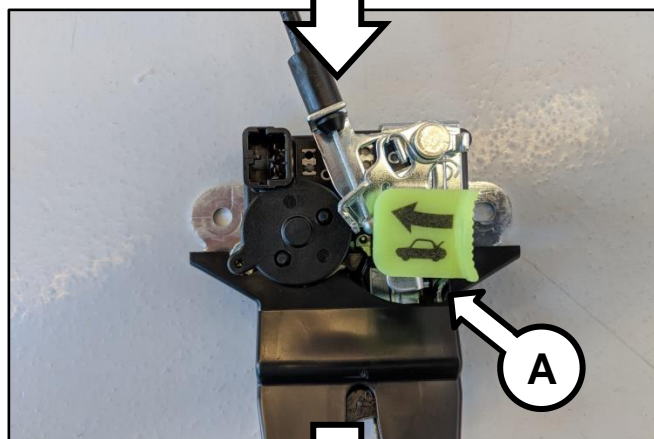
Ensure that no foreign materials exist or enter the terminals (E) of the actuator/motor (D) or the **new** base (B) sub assembly.

i IMPORTANT

Install the one (1) screw with the long shank that is partially threaded in the same location.

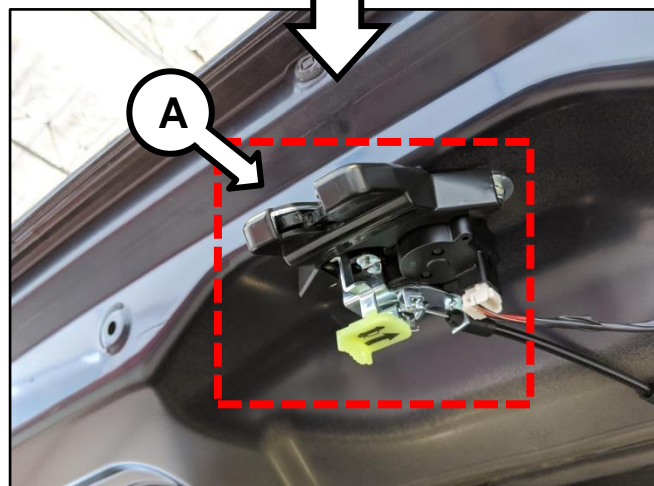


4. Install the trunk latch assembly (A) to the trunk lid in the same reverse order of removal.



- 5a. Ensure that the trunk lid latch operates normally.

- 5b. Ensure that the trunk lid lamp operates normally.




SUBJECT:

PARTIAL REPAIR – TRUNK LATCH

AFFECTED VEHICLE RANGE:

Model	Production Year Range
Forte (YDm)	2017- 2018
Rio (SC)	2017- 2018
Optima (JF/JFa)	2016 - 2020
Rio (UB)	2012 - 2017

REQUIRED PART:

Model	Part Name	P/N	Figure	Qty.	Comments
Forte (YDm)	Trunk Latch Base Sub Assembly	81231 A7000FFF		1	Manual Operation
Forte YDm		81231 1R020FFF			Electric Operation
Rio (SC)		81231 C1000FFF			Combo Operation
Optima (JF/JFa)		81230 D4000FFF			Electric Operation
Rio (UB)		81230 1W010FFF			Manual Operation
		81230 1W030FFF			Electric Operation

WARRANTY INFORMATION:

N Code: I21 C Code: ZZ6

Model	Claim Type	Causal P/N	Qty.	Repair Description	Labor Op Code	Op Time	Replacement P/N	Qty.
JF/JFa	W	Refer to EPC	0	Trunk Lid Latch Base Sub Assembly Replacement	81230F04	0.4 M/H	81230 D4000FFF	1
YDm (4D)					81231F03	0.3 M/H	81231 A7000FFF 81231 1R020FFF	
UB					81230F03	0.3 M/H	81230 1W010FFF 81230 1W030FFF	
SC (4D)					81231F01	0.4 M/H	81231 C1000FFF	

Note: Failure to follow the procedure outlined in this bulletin can result in a warranty claim chargeback for unnecessary replacement of the complete trunk lid latch assembly.