



April 1, 2020

## Process Change Notice - Automated Beam Manufacturing facility

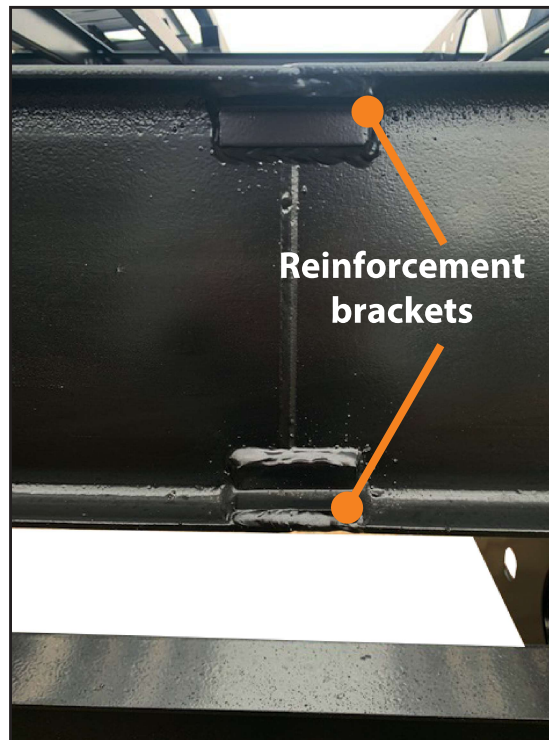
Dear Valued Customer:

Please be advised, starting the second week in March, LCI began manufacturing prototypes from our Automated Beam Manufacturing facility.

The Beam Processing Center (BPC) will robotically splice our standard I-Beams to create chassis main rails. Additionally when processed, all hole plates will be eliminated and all component locations will be pre-marked on the I-Beam.

During this initial ramp up, while we are confirming the splice weld parameters, we have added reinforcement brackets to all I-Beam splices (see picture below) as an extra measure of safety. All reinforced splice profiles have been validated and test results are available upon request.

We will have additional communication with your specific operation teams as we are beginning to introduce your product line to our automation facility.



If you have any questions, please feel free to reach out to your LCI chassis representative. We value and appreciate your business and partnership.

Sincerely,

**Mason Ogle**

Director of Sales

Lippert Components, Inc.

c: 574.849.1742

[mogle@lci1.com](mailto:mogle@lci1.com)

## **Frequently Asked Questions:**

- 1. Will a new part number be required?** No, there are no part number changes.
- 2. Does the price change for the item?** No, there is no price change.
- 3. Is the new part wholly interchangeable with the previous version of the part?** Yes, the parts are interchangeable.
- 4. Does the customer need to replace inventory?** No, the change will be made on a running basis.