

Load Configuration Data

Service Category Engine/Hybrid System

Section Engine Control

Market USA

Toyota Supports
 ASE Certification 

Applicability

YEAR(S)	MODEL(S)	ADDITIONAL INFORMATION
2016 - 2020	Yaris SD MEX-Prod	
2017 - 2018	iA	

REVISION NOTICE

June 21, 2020 Rev2:

- **Applicability has been updated to include 2018 – 2020 Yaris SD and 2018 iA model year vehicles.**
- **The entire bulletin has been updated.**

September 7, 2016 Rev1:

- **Applicability has been updated to include 2017 model year iA vehicles.**
- Any previous printed versions of this bulletin should be discarded.**

Introduction

This bulletin details the procedure for loading configuration data (also known as As-built data) in the ECUs of 2016 – 2020 model year Yaris Sedan Mexico-produced and 2017 – 2018 model year iA vehicles. It is not recommended to swap ECUs between vehicles. The configuration data must be loaded into the ECU when replacing one of the ECUs listed below:

- PCM (Engine ECU).
- TCM (Transmission ECU).
- IC (Instrument Cluster or Combination Meter ECU).
- SSU (Smart Key ECU).
- RCM (Restraint Control Module/Airbag ECU).

Load Configuration Data

Introduction (continued)

There are two different ways to load configuration data into a new ECU:

1. The data must be saved from the old ECU to load into the new ECU. This method is used when an ECU requires replacement, however you can still communicate with the ECU and read the existing As-built data. This is the preferred method and should be attempted first, as it will ensure that the current ECU calibration is reinstalled on the ECU after repair (for TCM and PCM).

Follow steps 1 – 8 of the Repair Procedure in this bulletin for instructions on how to save the data. Once at step 8, start over at step 1 after replacing the ECU to load the data.

2. The data can be downloaded from the server. Downloading the calibration from the server will load the original calibration as it was built from the factory (for TCM and PCM). This method is used when you can no longer communicate with the ECU, or the Repair Manual has instructed you to re-load As-Built Data without replacing the ECU.

Follow the Repair Procedure to load data from the server into the ECU.

Warranty Information

OP CODE	DESCRIPTION	TIME	OFF	T1	T2
N/A	Not Applicable to Warranty	–	–	–	–

Required Tools & Equipment

REQUIRED EQUIPMENT	SUPPLIER	PART NUMBER	QTY
Techstream ADVi*	ADE	TSADVUNIT	1
Techstream 2.0		TS2UNIT	
Techstream Lite		TSLITEPDLR01	
Techstream Lite (Green Cable)		TSLP2DLR01	

*Essential SST.

NOTE

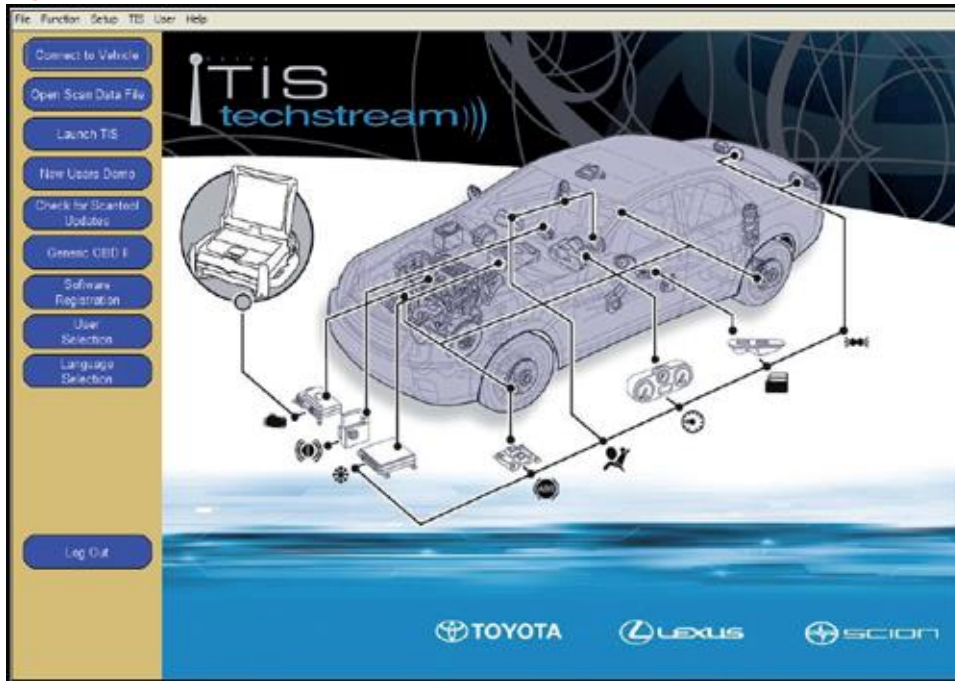
- Only ONE of the Techstream units listed above is required.
- Software version 15.00.028 or later is required.
- Additional Techstream units may be ordered by calling Approved Dealer Equipment (ADE) at 1-800-368-6787.

Load Configuration Data

Repair Procedure

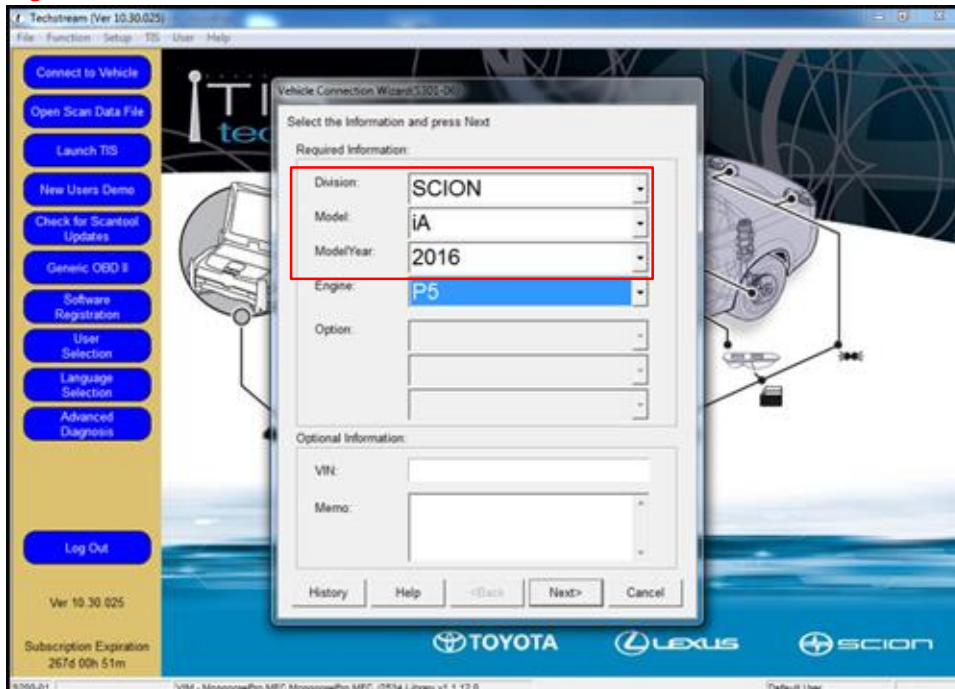
1. Connect Techstream to the vehicle.

Figure 1.



2. Select the correct vehicle Division, Model, and Model Year.

Figure 2.

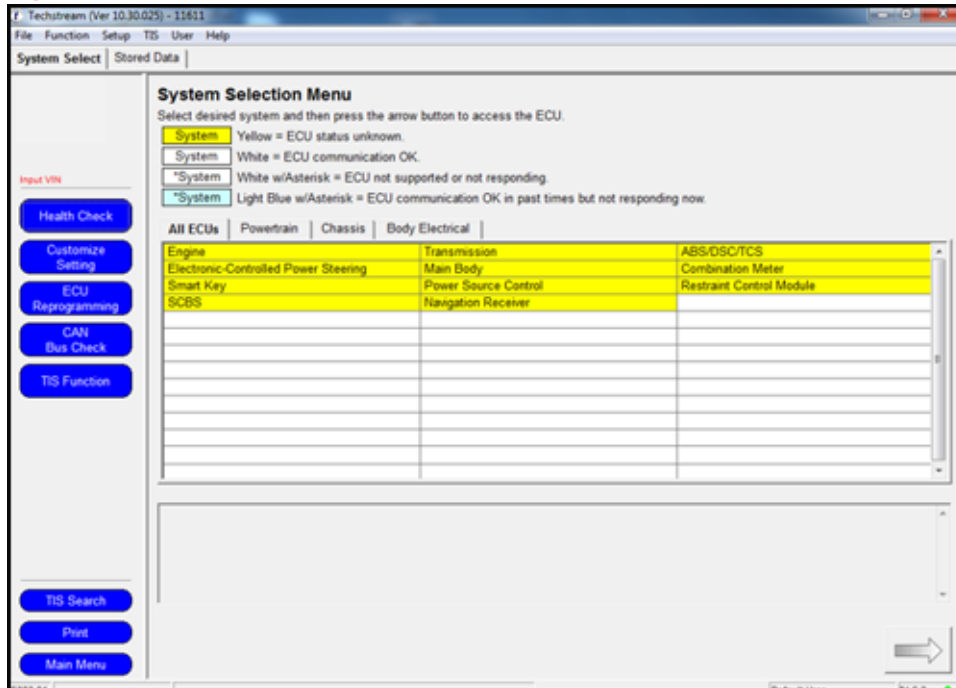


Load Configuration Data

Repair Procedure (continued)

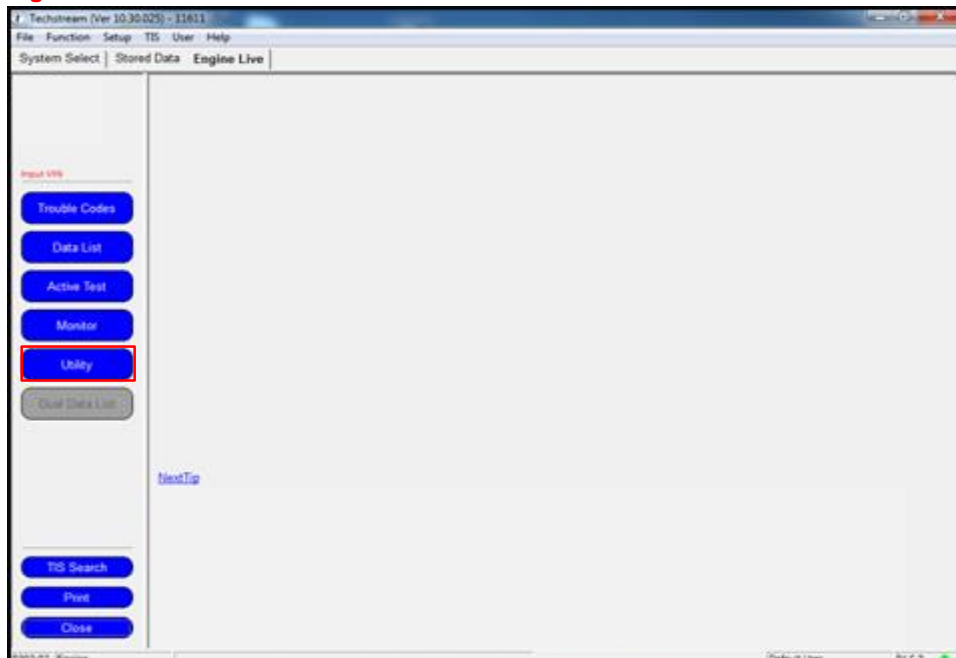
3. Select the ECU of the system you are loading configuration data.

Figure 3.



4. Select Utility.

Figure 4.

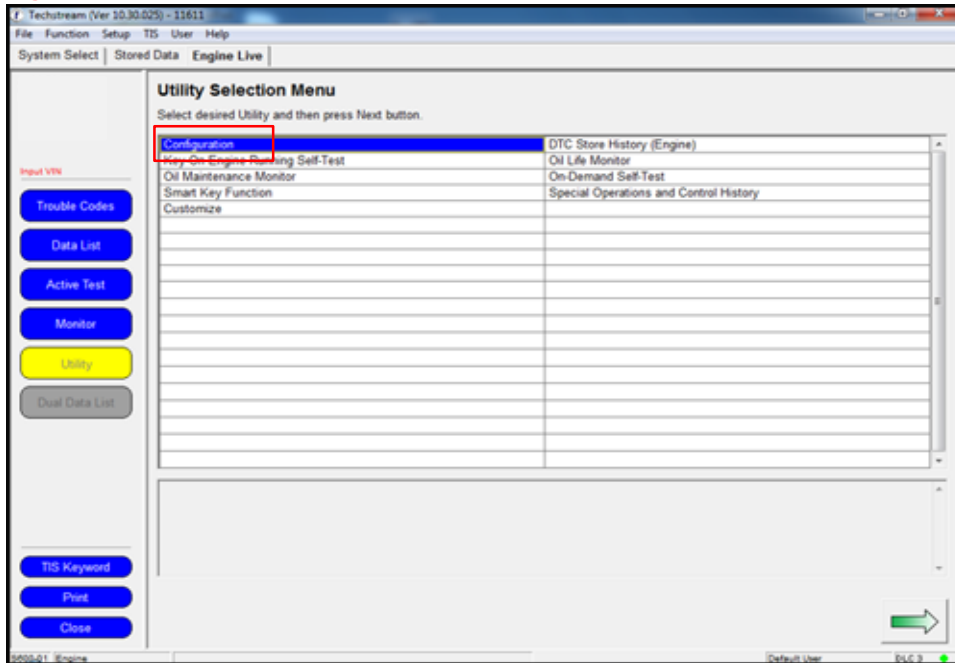


Load Configuration Data

Repair Procedure (continued)

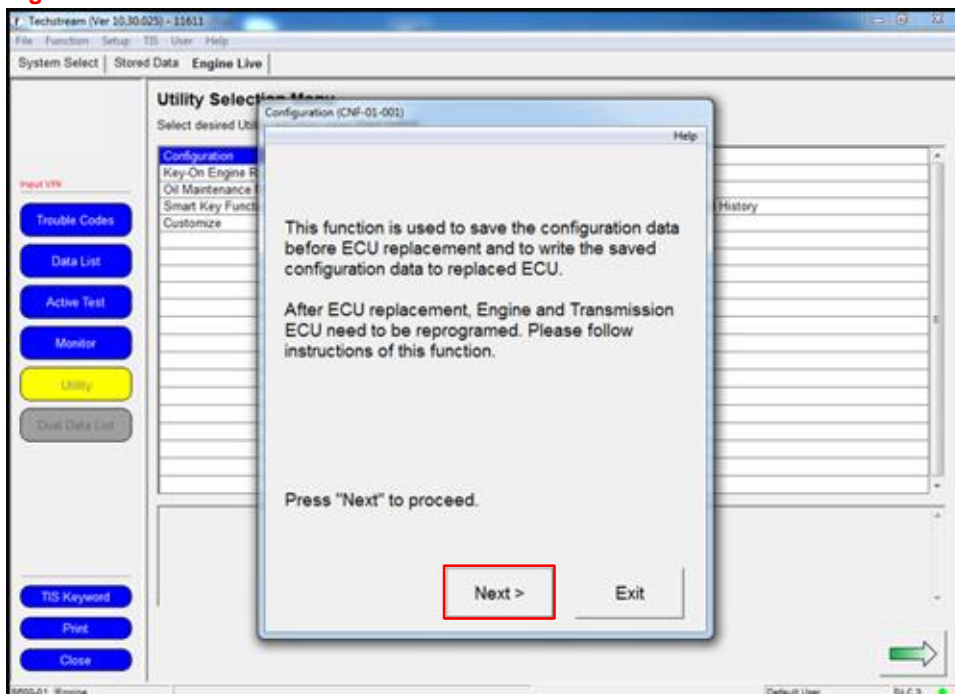
5. Select Configuration.

Figure 5.



6. Follow the prompts on the Utility pop-up screens.

Figure 6.



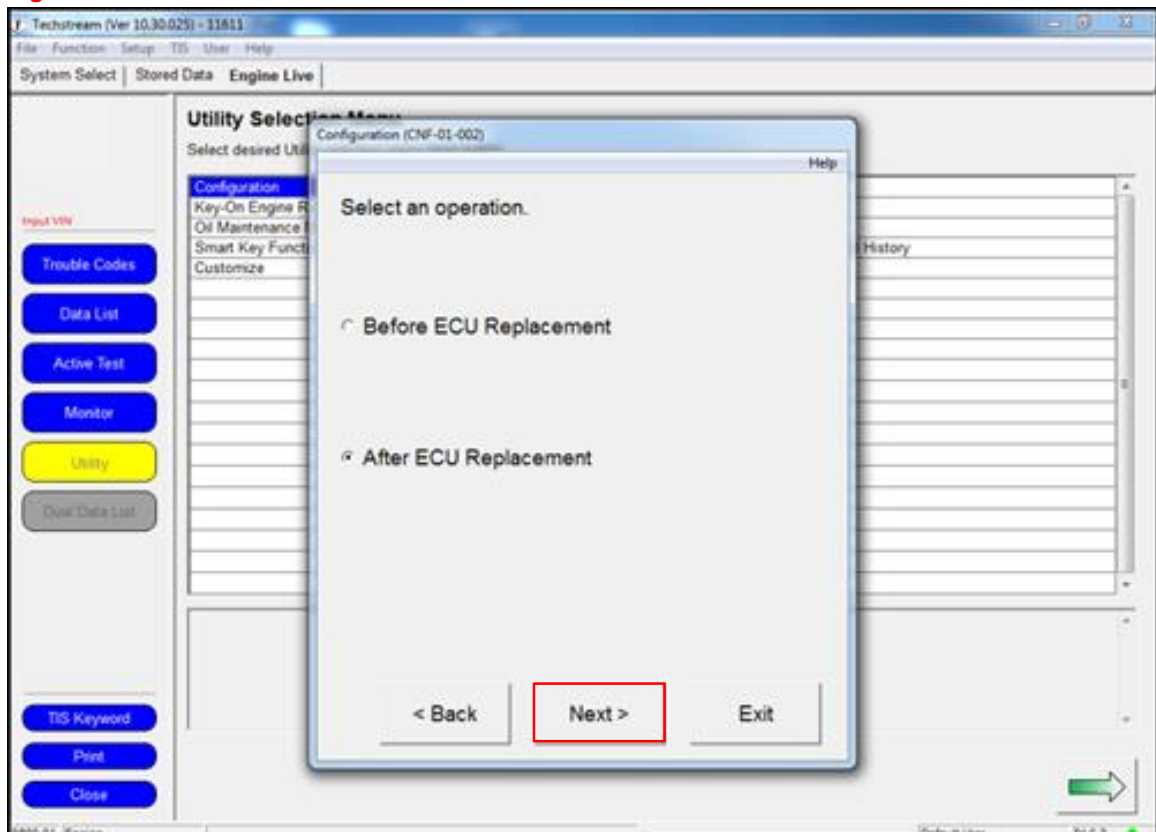
Load Configuration Data

Repair Procedure (continued)

- If you are saving the current configuration data to load into a NEW ECU, select Before ECU Replacement and select Next. This will save the data currently on the ECU.

If you have installed the NEW blank ECU and have either saved the old data OR want to download the data from the server, OR the Repair Manual has instructed you to load configuration data on an old ECU, select After ECU Replacement and select Next.

Figure 7.

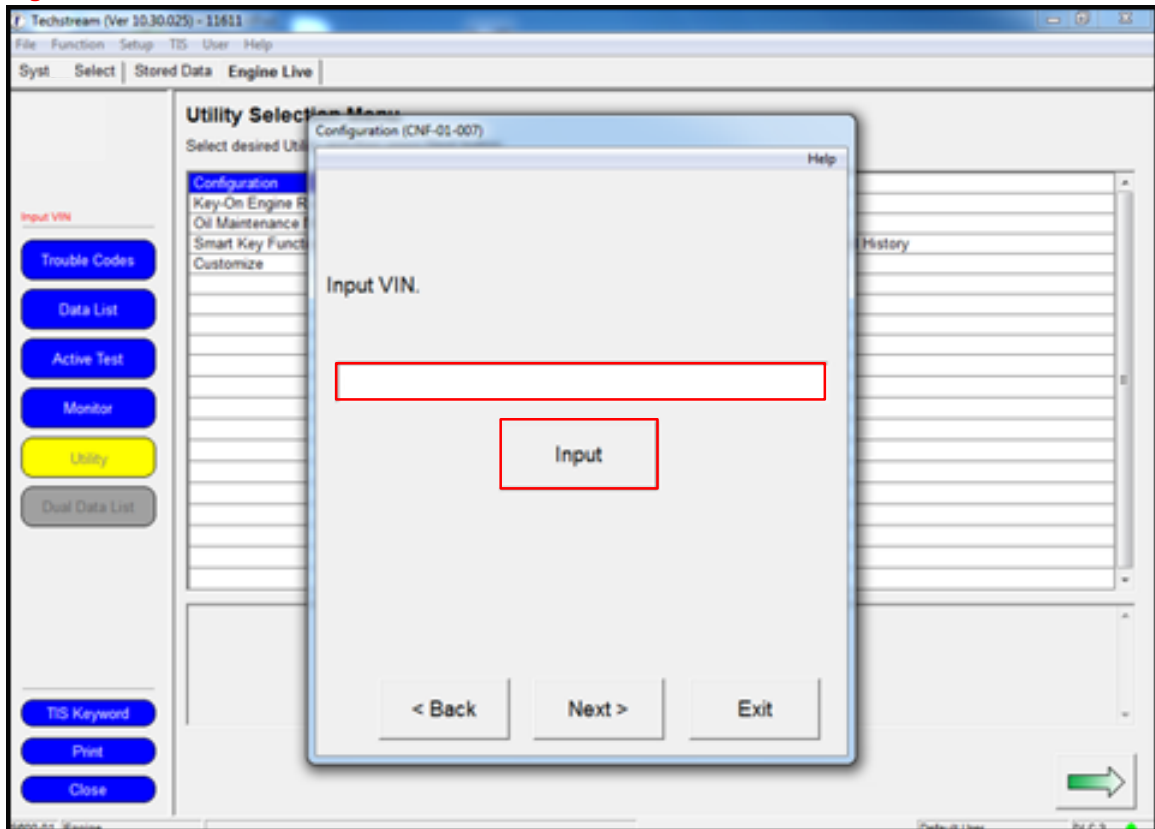


Load Configuration Data

Repair Procedure (continued)

8. Enter the 17-digit VIN of the vehicle being worked on.

Figure 8.



NOTE

If you are transferring data from an old ECU to a new ECU, start over at step 1 of the Repair Procedure AFTER completing step 8 and replacing the ECU to load the data.

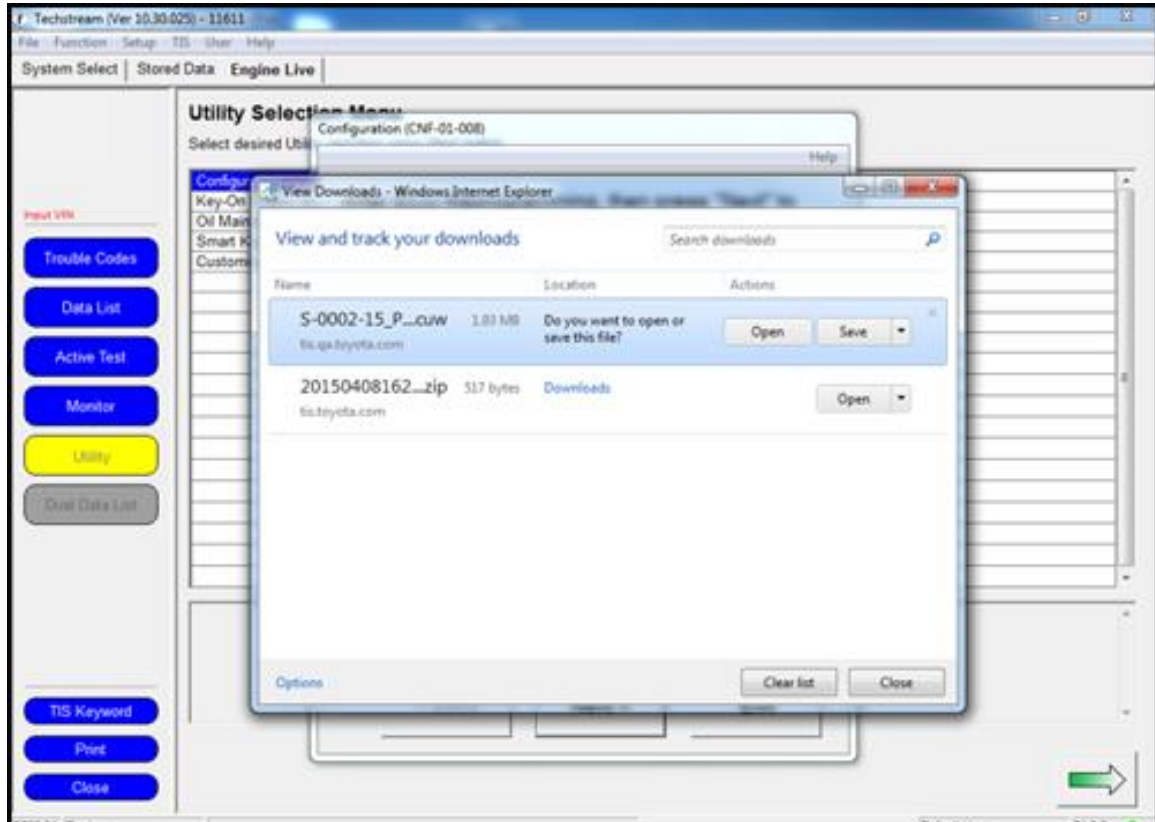
Load Configuration Data

Repair Procedure (continued)

9. If you are loading configuration data for the PCM or TCM, a download window will open prompting the download of the calibration for that vehicle. Select Open to open the Calibration Update Wizard (CUW).

If you are loading data for ANY other system, go to step 12.

Figure 9.

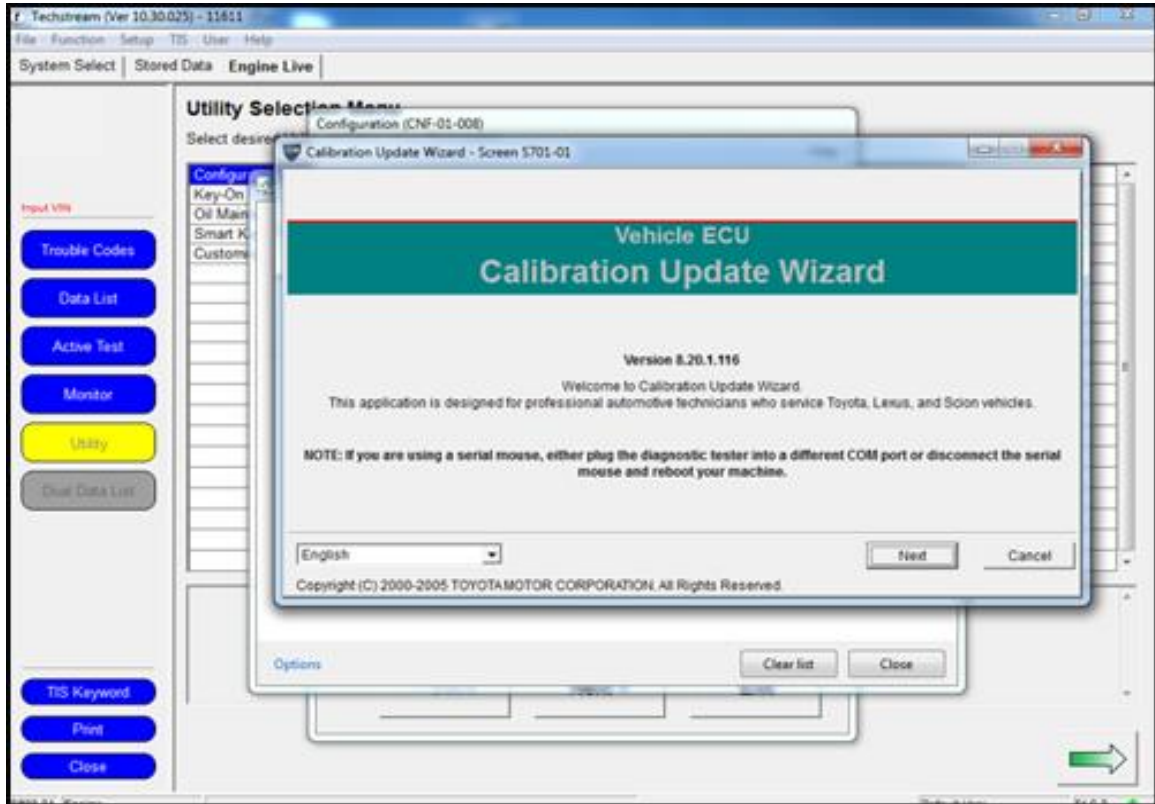


Load Configuration Data

Repair Procedure (continued)

10. Follow the instructions for CUW. See Service Bulletin [T-SB-0134-16](#) Techstream ECU Flash Reprogramming Procedure for more details.

Figure 10.



Load Configuration Data

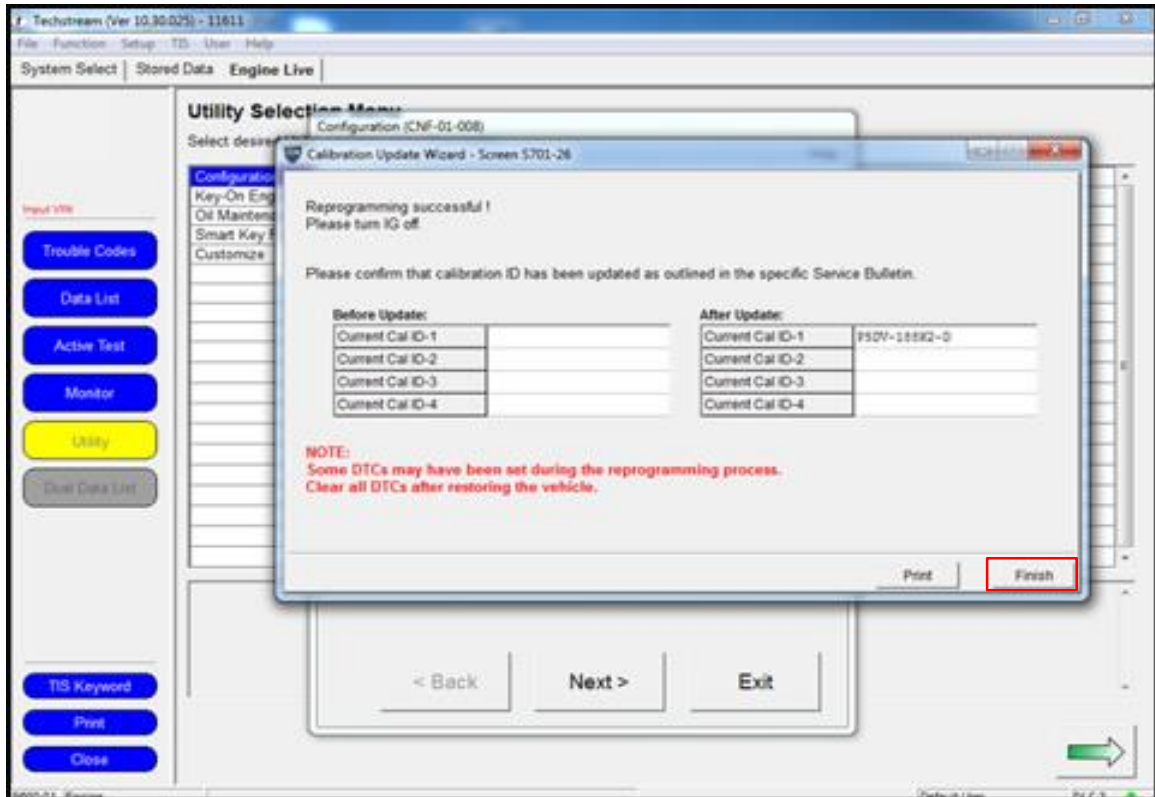
Repair Procedure (continued)

- Once the calibration has been loaded into the vehicle, select Finish to close CUW.

NOTE

The procedure is NOT complete yet. Continue through the rest of the bulletin.

Figure 11.



Load Configuration Data

Repair Procedure (continued)

- Continue to follow the prompts in the Utility screens to load the configuration data.

Figure 12.

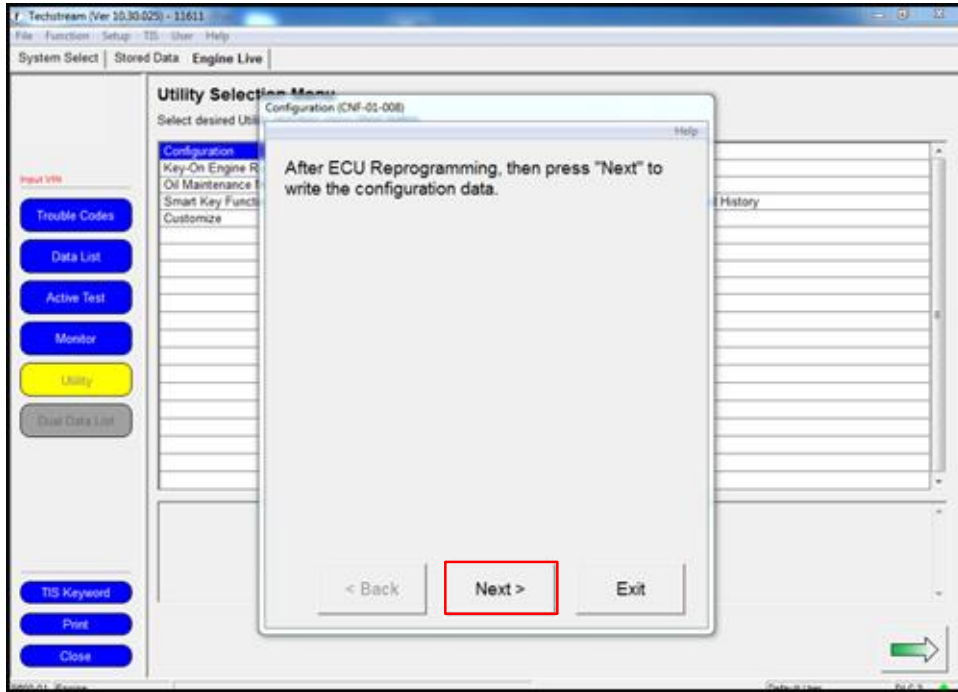
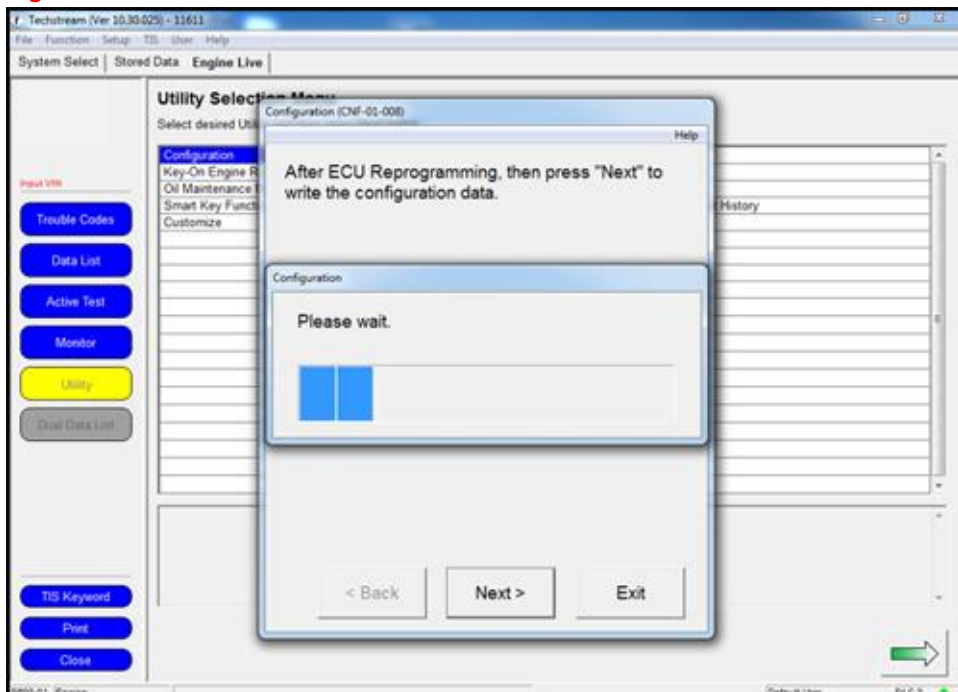


Figure 13.

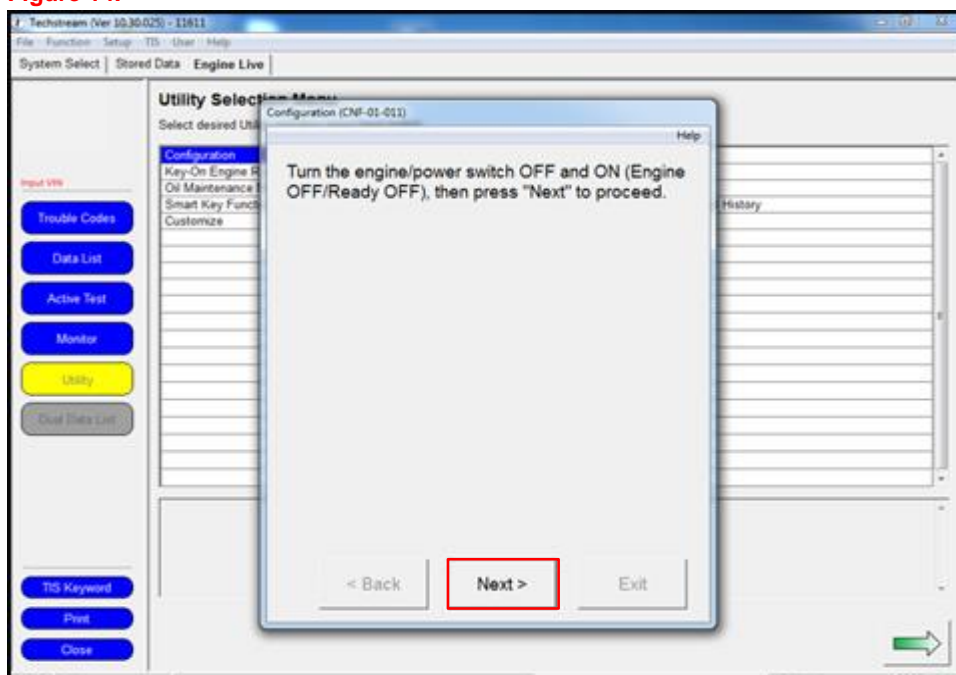


Load Configuration Data

Repair Procedure (continued)

13. Turn the engine/power switch OFF and ON (engine OFF/ready OFF), then press Next to proceed.

Figure 14.



Load Configuration Data

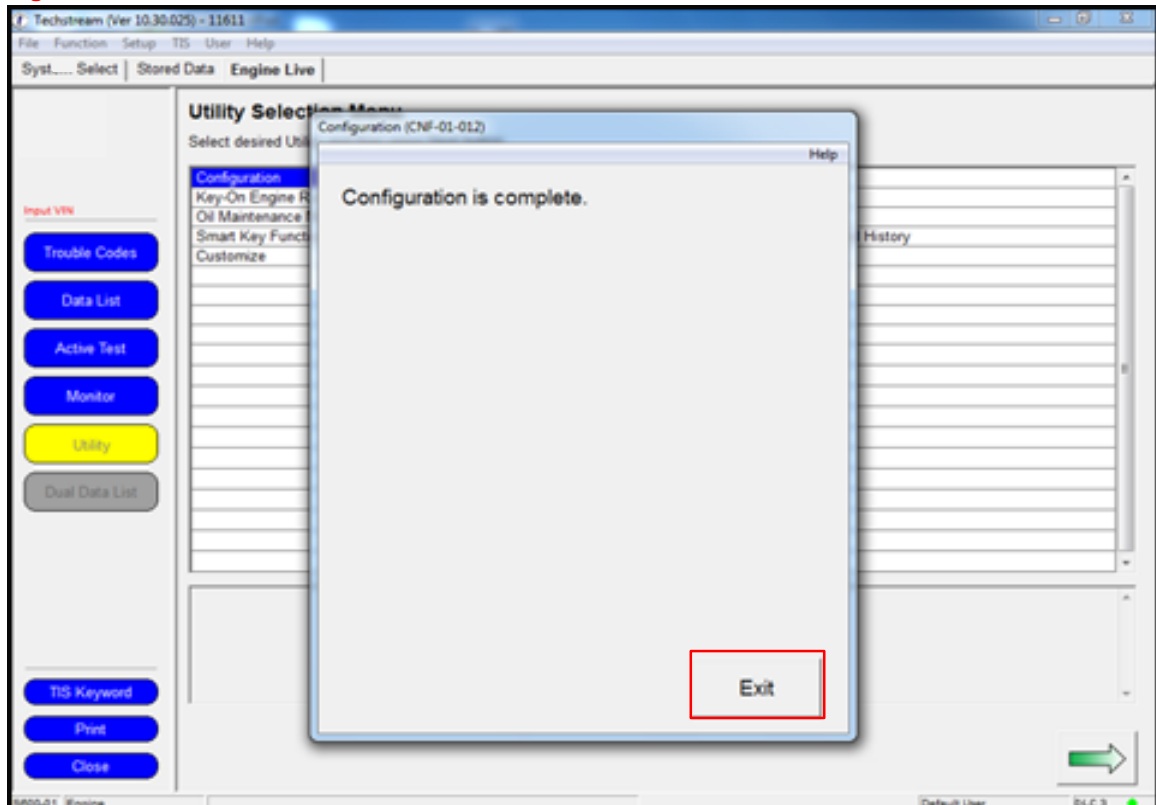
Repair Procedure (continued)

- Configuration is complete, select Exit.

NOTE

If the PCM or SSU ECU was replaced, you **MUST** complete the handshake to register them together. Perform procedure B of [T-SB-0013-16](#).

Figure 15.



- Perform a Health Check and check for ANY updated calibrations. If there are updates, check to see if the vehicle model and model year are applicable and load as necessary.