



Preliminary Information

PIC6376D A/C Evaporator TXV Tubes Bent

Models

Brand:	Model:	Model Years:	VIN:		Engine:	Transmissions:
			from	to		
Chevrolet	Impala	2016 - 2020	All	All	All	All
Cadillac	XTS	2013 - 2019	All	All	All	All

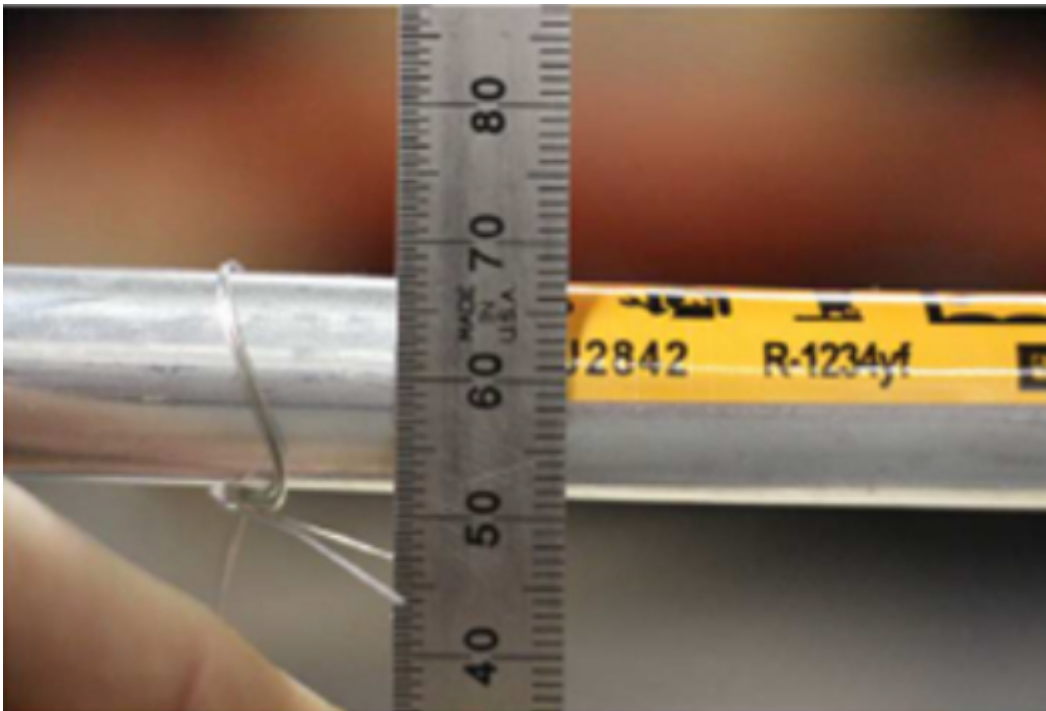
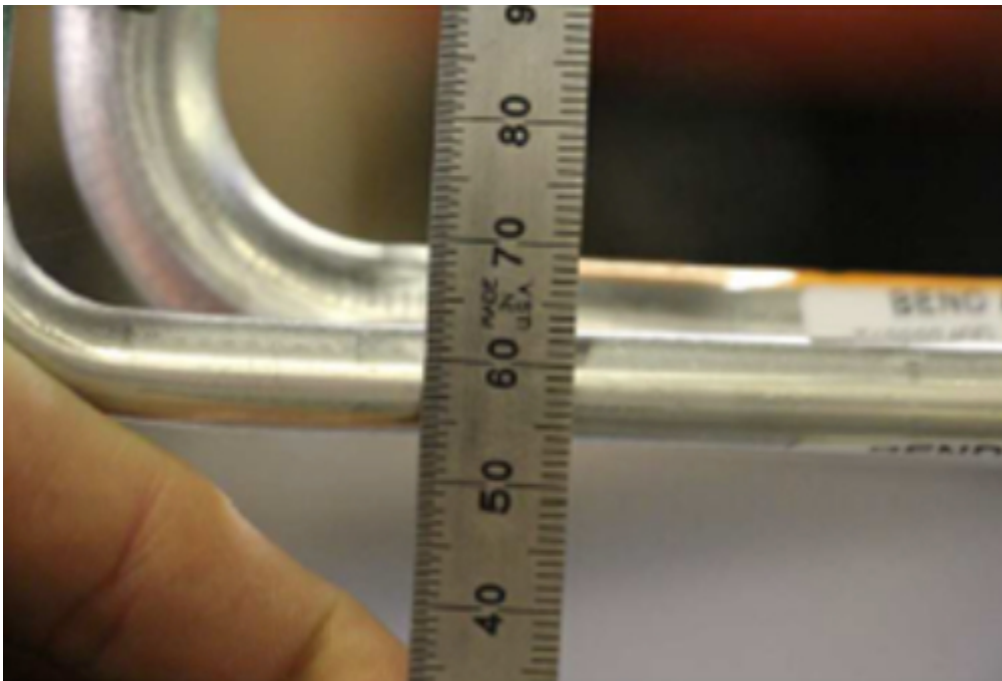
Involved Region or Country	North America
Condition	When replacing an evaporator a technician may notice when removing it from the box that the tubes appear to be bent downward. It may also be found that when attempting to install the evaporator in the HVAC case that the tubes will not align with the holes in the case or the evaporator will not fully fit into the case.
Cause	Current packaging procedures from the supplier may allow the evaporator tubes to be bent during shipping.

Correction:

Inspect the new evaporator to see if the TXV tubes are bent at a downward angle as shown below.



There should be a distance of 50-60 mm. when measuring from the core to the center of the TXV tubes as shown below.



If the TXV tubes are bent down do not attempt to adjust the tubes to allow installation of the evaporator in the HVAC case. If the tubes are bent or adjusted back into position this will result in a slow leak from the lock ring joint.

Please Call ParTech at (855-462-2737), press 2 and request an RFI (Request for Inspection). At that time request ParTech to have the PDC (Parts Distribution Center) add foam under the TXV pipes when they ship the new part.

Parts Information

Description	Part Number	Quantity
Evaporator Kit - A/C R1234YF	84409864	1
Evaporator Kit - A/C R134A	84409866	1

Warranty Information

For vehicles repaired under the Bumper-to-Bumper coverage (Canada Base Warranty coverage), use the following labor operation. Reference the Applicable Warranties section of Investigate Vehicle History (IVH) for coverage information.

Labor Operation	Description	Labor Time
4412470	Air Conditioning Evaporator Replacement	Use Published Labor Operation Time

Additional SI Keywords

AC, A/C, air conditioning, bend, bent, case, evap, evaporator, fit, leak, line, tube, TXV

Version History

Version	5
Modified	11/29/2019 - Created on. 04/02/2020 - Updated Models. 05/04/2020 - Updated Warranty Information. 06/25/2020 - Changed statement "There should be a distance of 60 mm" to 50-60 mm. 07/27/2020 - Added information for contacting ParTech and for shipping information



GENERAL MOTORS

© 2020 General Motors. All Rights Reserved.