

STAR ONLINE PUBLICATION

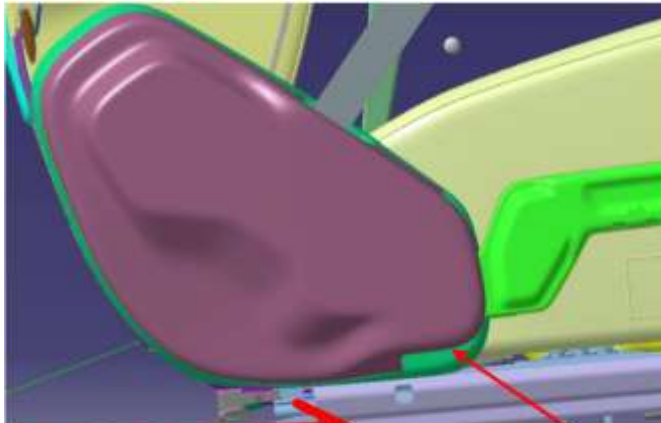
Case Number: S2023000036

Release Date: 7/10/2020

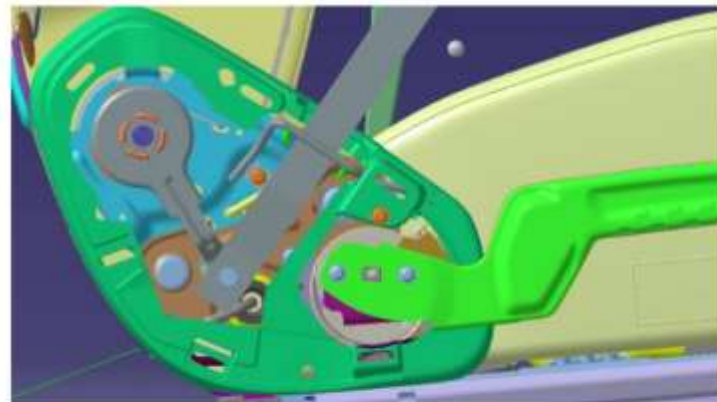
Symptom/Vehicle Issue: Front Seat Lift Handle Binding

Discussion: Use the following procedure to inspect and repair seat frame with a binding lift handle. In most cases, the seat does not need to be replaced. Seat Guide wire part numbers 68465711AA – Left seat, 68465712AA Right seat

1. Move seat to full-forward to gain access to plastic shield
2. Remove Plastic Cover from Inner Ring by pulling on lower flange (5'o-clock zone) near Lift-handle



Move seat full forward
for best access



Pull plastic cover off from
bottom flange

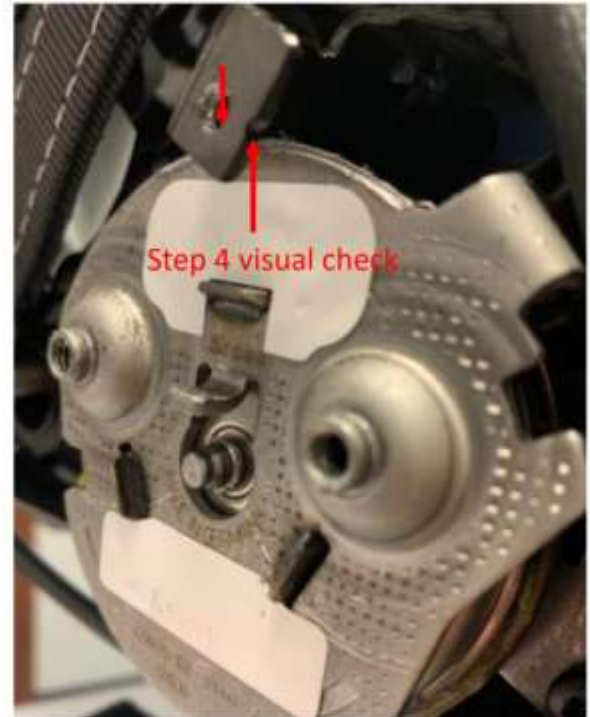
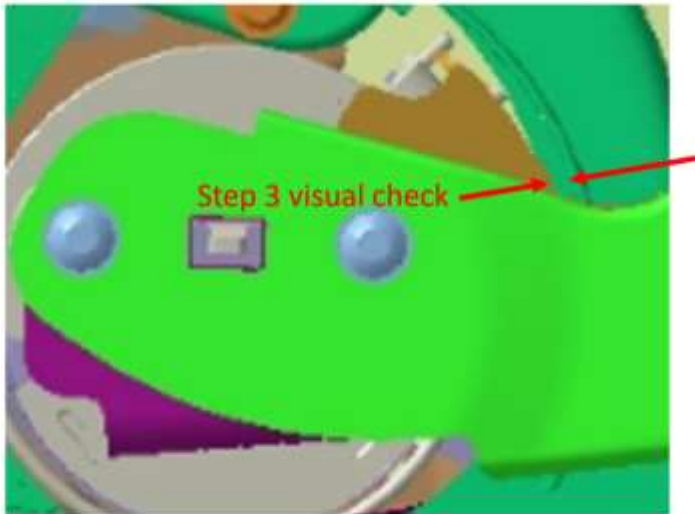
3. Visually confirm interference/binding between Lift-handle & Inner Ring rub-strip by cycling handle upward

This document does not authorize warranty repairs. This communication documents a record of past experiences. STAR Online does not provide any conclusions about what is wrong with the vehicle. Rather, it captures all previous cases known that appear to be similar or related to the vehicle symptom / condition. You are the expert, and you are responsible for deciding on the appropriate course of action.

Contact STAR Center, or your Technical Assistance Center Via TechCONNECT or eCONTACT ticket if no solution is found

STAR ONLINE PUBLICATION

4. Visually confirm interference/binding between Guide-wire bracket/screw & Lift-mechanism top edge by cycling handle upward

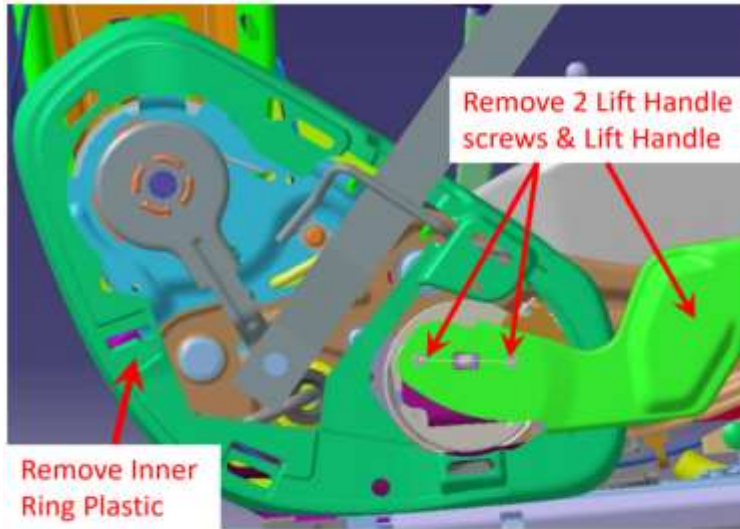


5. Remove 2 Lift Handle screws & Lift Handle
6. Remove 2 Inner Ring Plastic attachment screws and Inner Ring Plastic
7. Remove 1 guide wire attachment screw and 1 marriage bolt.
8. Remove bent guide wire.

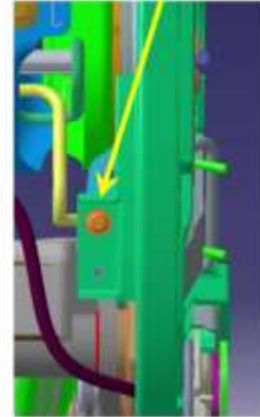
This document does not authorize warranty repairs. This communication documents a record of past experiences. STAR Online does not provide any conclusions about what is wrong with the vehicle. Rather, it captures all previous cases known that appear to be similar or related to the vehicle symptom / condition. You are the expert, and you are responsible for deciding on the appropriate course of action.

Contact STAR Center, or your Technical Assistance Center Via TechCONNECT or eCONTACT ticket if no solution is found

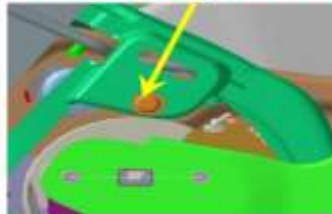
STAR ONLINE PUBLICATION



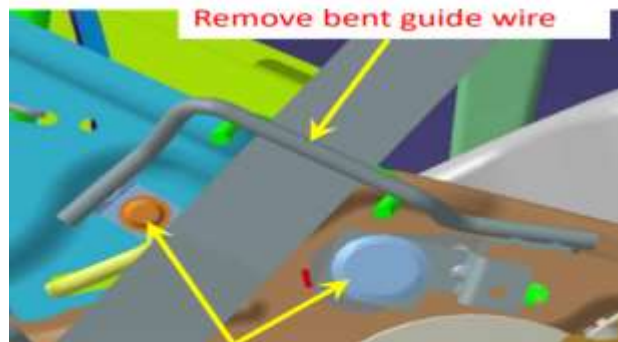
Remove Inner Ring attachment screw at rear of seat



Remove Inner Ring attachment screw that attaches to guide wire



Remove bent guide wire



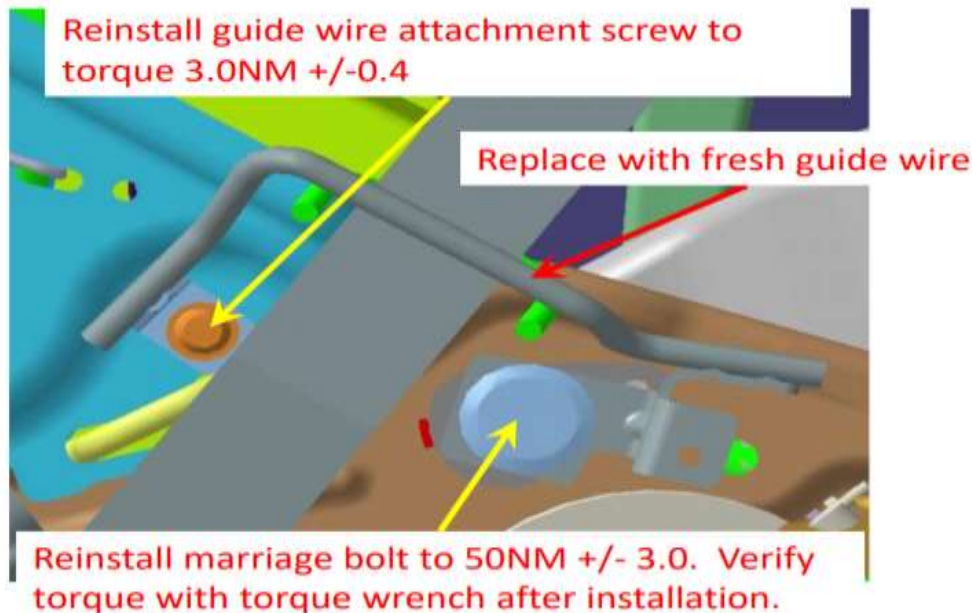
Remove guide wire attachment screw and marriage bolt

This document does not authorize warranty repairs. This communication documents a record of past experiences. STAR Online does not provide any conclusions about what is wrong with the vehicle. Rather, it captures all previous cases known that appear to be similar or related to the vehicle symptom / condition. You are the expert, and you are responsible for deciding on the appropriate course of action.

Contact STAR Center, or your Technical Assistance Center Via TechCONNECT or eCONTACT ticket if no solution is found

STAR ONLINE PUBLICATION

9. Replace bent guide wire with new guide wire. 68465711AA – Left seat, 68465712AA Right seat
10. Reinstall guide wire attachment screw to torque 3.0NM +/- 0.4
11. Reinstall marriage bolt to 50NM +/- 3.0. Verify torque with torque wrench after installation of fresh guide wire.

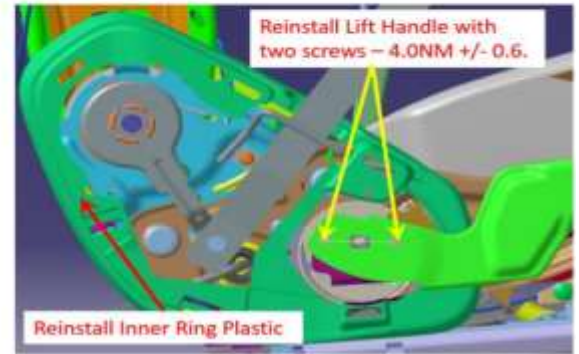
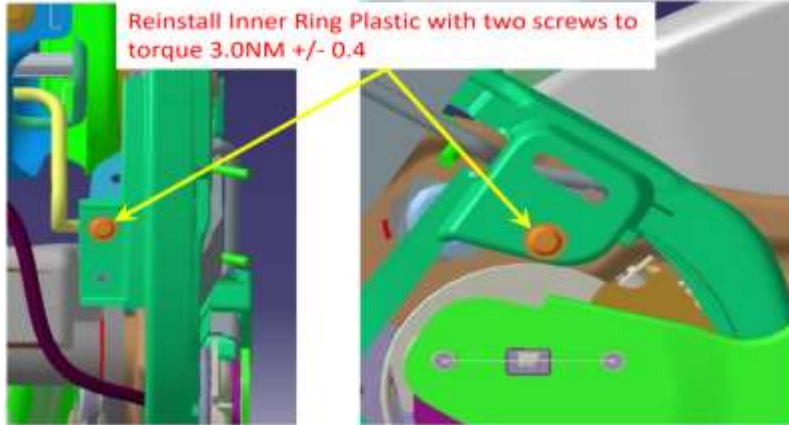


12. Reinstall Inner Ring Plastic with two screws to torque 3.0NM +/- 0.4 and attach Lift Handle with two screws to torque 4.0NM +/- 0.6.
13. Verify gap between Lift-handle & Inner Ring rub-strip = 2mm minimum, and gap between Guide-wire bracket/screw & Liftmechanism top edge = 3mm minimum.
14. Measure & record gaps from step 13 to confirm

This document does not authorize warranty repairs. This communication documents a record of past experiences. STAR Online does not provide any conclusions about what is wrong with the vehicle. Rather, it captures all previous cases known that appear to be similar or related to the vehicle symptom / condition. You are the expert, and you are responsible for deciding on the appropriate course of action.

Contact STAR Center, or your Technical Assistance Center Via TechCONNECT or eCONTACT ticket if no solution is found

STAR ONLINE PUBLICATION



15. Function Lift-handle upward, release & confirm it returns freely to home position.
16. Check to confirm A-clips from plastic shield and Inner Ring are in-tact and not damaged. Replace as needed.
17. Re-install Plastic Cover onto Inner Ring; pull slightly around perimeter to confirm fully seated and retained

This document does not authorize warranty repairs. This communication documents a record of past experiences. STAR Online does not provide any conclusions about what is wrong with the vehicle. Rather, it captures all previous cases known that appear to be similar or related to the vehicle symptom / condition. You are the expert, and you are responsible for deciding on the appropriate course of action.

Contact STAR Center, or your Technical Assistance Center Via TechCONNECT or eCONTACT ticket if no solution is found