



Service Bulletin

Bulletin No.: 20-NA-150

Date: August, 2020

TECHNICAL

Subject: Glow Plug Control Module Update for P133x and/or P067x

Brand:	Model:	Model Year:		VIN:		Engine:	Transmission:
		from	to	from	to		
Chevrolet	Silverado	2017	2019			L5P	All
	Silverado 4500HD/ 5500HD/6500HD	2019	2020			L5D	
GMC	Sierra	2017	2019			L5P	

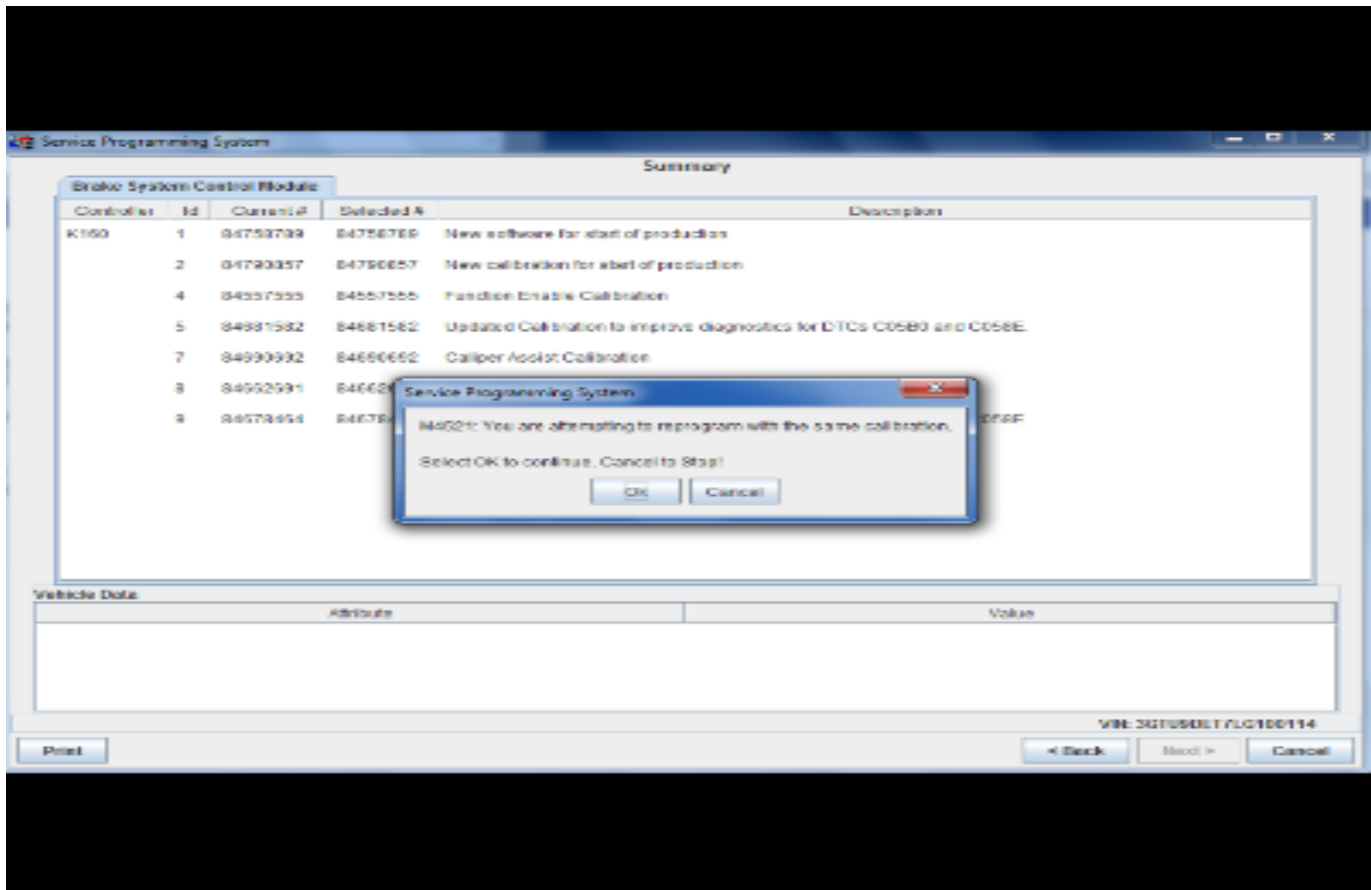
Involved Region or Country	North America, Canada, Middle East, Israel, Palestine
Additional Options (RPOs)	
Condition	<p>Some customers may comment on a MIL (Malfunction Indicator Lamp) or SES (Service Engine Soon) messages illuminated.</p> <p>Technician may find the following DTCs set or in recent history:</p> <ul style="list-style-type: none"> • P1338 • P1339 • P133A • P133B • P133C • P133D • P133E • P133F • P0671 • P0672 • P0673 • P0674 • P0675 • P0676 • P0677 • P0678 • P067A • P067B • P067C • P067D • P067E • P067F • P06C5 • P06C6 • P06C7 • P06C8 • P06C9 • P06CA • P06CB • P06CC
Cause	The cause of the condition may be an issue with the software in the Glow Plug Control Module (GPCM).
Correction	Reprogram the GPCM.

Service Procedure

Caution: Before downloading the update files, be sure the computer is connected to the internet through a network cable (hardwired). DO NOT DOWNLOAD or install the files wirelessly. If there is an interruption during programming, programming failure or control module damage may occur.

Note: Carefully read and follow the instructions below.

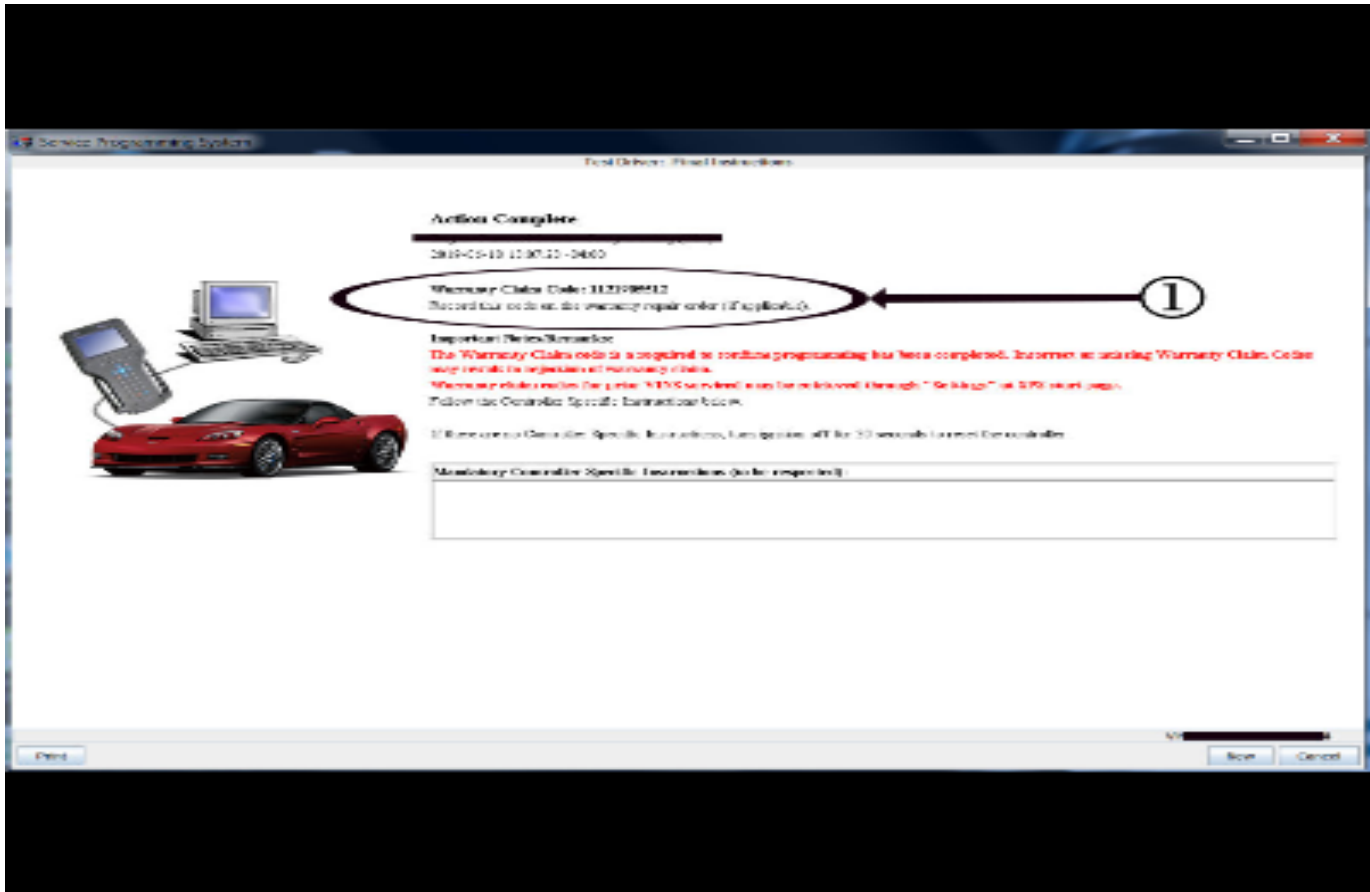
- Ensure the programming tool is equipped with the latest software and is securely connected to the data link connector. If there is an interruption during programming, programming failure or control module damage may occur.
- Stable battery voltage is critical during programming. Any fluctuation, spiking, over voltage or loss of voltage will interrupt programming. Install a GM Authorized Programming Support Tool to maintain system voltage. Refer to www.gmdesolutions.com for further information. If not available, connect a fully charged 12 V jumper or booster pack disconnected from the AC voltage supply. DO NOT connect a battery charger.
- Turn OFF or disable systems that may put a load on the vehicles battery such as; interior lights, exterior lights (including daytime running lights), HVAC, radio, etc.
- Clear DTCs after programming is complete. Clearing powertrain DTCs will set the Inspection/Maintenance (I/M) system status indicators to NO.



Important: TIS2WEB screen shown. Techline Connect screen is similar and will be included soon.

Important: If the Same Calibration/Software Warning is noted on the SPS screen, select OK and follow screen instructions. After a successful programming event, the WCC is located in the Service Programming System dialogue box of the SPS Summary screen. No further action is required. Refer to the Warranty section of the bulletin.

1. Reprogram the Glow Plug Control Module. Refer to *K34 Glow Plug Control Module: Programming and Setup* in SI.



5431209

Important: TIS2WEB screen shown. Techline Connect screen is similar and will be included soon.

Important: To avoid warranty transaction rejections, you **MUST** record the warranty claim code provided on the SPS Warranty Claim Code (WCC) screen on the job card. Refer to callout 1 above for the location of the WCC on the SPS screen

2. Record SPS Warranty Claim Code on job card for warranty transaction submission.

Warranty Information

For vehicles repaired under the Bumper-to-Bumper coverage (Canada Base Warranty coverage), use the following labor operation. Reference the Applicable Warranties section of Investigate Vehicle History (IVH) for coverage information.

Labor Operation	Description	Labor Time
*2886908	Reprogram GPCM for P133x and/or P067x	0.3 hr
<p>*This is a unique Labor Operation for Bulletin use only.</p> <p>Important: **To avoid warranty transaction rejections, carefully read and follow the instructions below:</p> <ul style="list-style-type: none"> The SPS Warranty Claim Code must be accurately entered in the "SPS Warranty Claim Code" field of the transaction. When more than one Warranty Claim Code is generated for a programming event, it is required to document all Warranty Claim Codes in the "Correction" field on the job card. Dealers must also enter one of the codes in the "SPS Warranty Claim Code" field of the transaction, otherwise the transaction will reject. It is best practice to enter the FINAL code provided by SPS. 		

Warranty Claim Code Information Retrieval

If the SPS Warranty Claim Code was not recorded on the Job Card, the code can be retrieved in the SPS system as follows:

1. Open TIS on the computer used to program the vehicle.
2. Select and start SPS.
3. Select Settings.
4. Select the Warranty Claim Code tab.

The VIN, Warranty Claim Code and Date/Time will be listed on a roster of recent programming events. If the code is retrievable, dealers should resubmit the transaction making sure to include the code in the SPS Warranty Claim Code field.

Version	1
Modified	Released July 23, 2020

