

AfterSales Diagnostic sheet



MAS002264
(BOL 20-10)

From: Aftersales - TSO
To: Maserati Network
Auburn Hills, MI | August 18, 2020

AFLS – Height sensor calibration – B22A4

Section: 08.30 – 1 - Electrical System Devices – Headlight Clusters

Models: M161

Description: In the AFLS control module there could be stored a DTC “B22A4-00 - Adaptive Front Lighting System Not Calibrated”.

It is not possible to complete the active diagnosis “Calibration of height sensor” (as shown in Figure 1) if that DTC is stored.

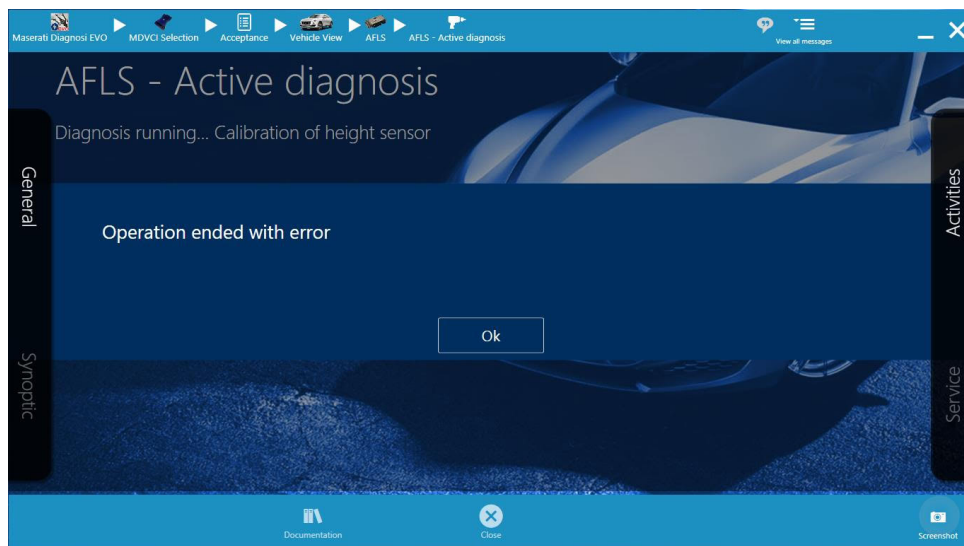


Figure 1: error during the calibration of height sensor

Cause: An incorrect setting during the active diagnosis “Calibration of height sensor”.

NOTE: The below in depth diagnostic procedures are to be used along with the procedures listed in the Workshop Manuals if a more comprehensive diagnosis is required.

Important: A BOL must be opened prior to removal of any parts (components). Please remember to attach pictures/ videos showing in detail the issue.

Actions: On the ETM, set the option to “Wheel Alignment Mode” (as shown in Figure 2).



Figure 2: option “Wheel Alignment Mode” set on ETM

Then, perform the active diagnosis “Calibration of height sensor” (as shown in Figure 3 and Figure 4).

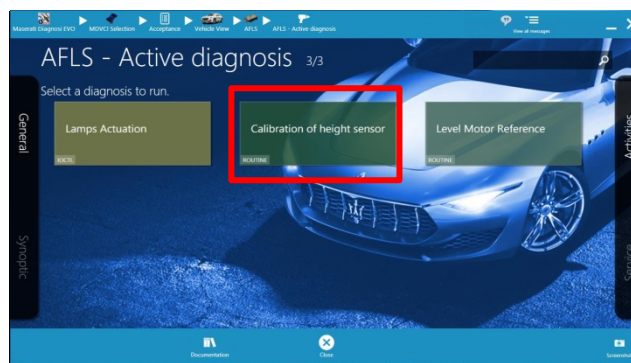


Figure 3: active diagnosis “Calibration of height sensor”

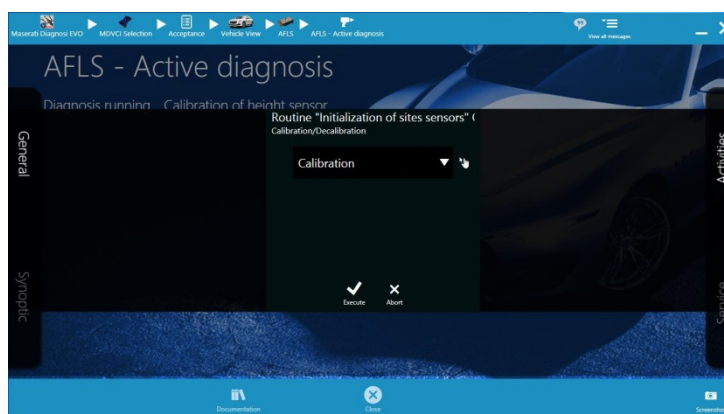


Figure 4: active diagnosis “Calibration of height sensor”