

Program Overview

Spray Wax Aftersales Support Program



July 14, 2020
Version 0.1



Program Overview

Table of Contents

Overview	ii
1. Finding the Serial Number of the Spray Wax Machine	1-1
2. Placing an order for consumables/components.....	2-2
3. Placing an order for exchange units	3-5

Overview

Overview

The **Toyota Spray Wax Aftersales Support Program** has been created to provide dealers access to replacement parts, consumables and express exchange. Bosch Automotive Service Solutions will be facilitating this program on behalf of Toyota.

Included in the Toyota Spray Wax Aftersales Support Program are approximately 20 tools. The tools will be available to order through the Toyota Special Service Tools (SSTs) hotline. A basic overview of the components of the program are outlined in the following sections.

1. Finding the Serial Number of the Spray Wax Machine

Toyota service technicians and service managers at each dealer will be able to place an order via the Toyota SST hotline.

Prior to calling please ensure to have the **serial number** of your dealership Spray Wax Machine available. This information is needed in order for the team to proceed with your dealership request whether it is for a consumable, component or express exchange.

How to find the **serial number**:

- **Serial number** can be found in a white label located in the main bracket between the heater and pump.
 - In some machines the white label may be located in the front of the bracket (image 1), in some machines it may be located in the back of the bracket (image 2).

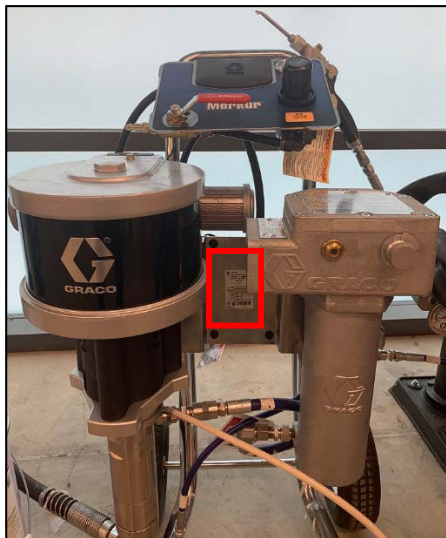


Image 1

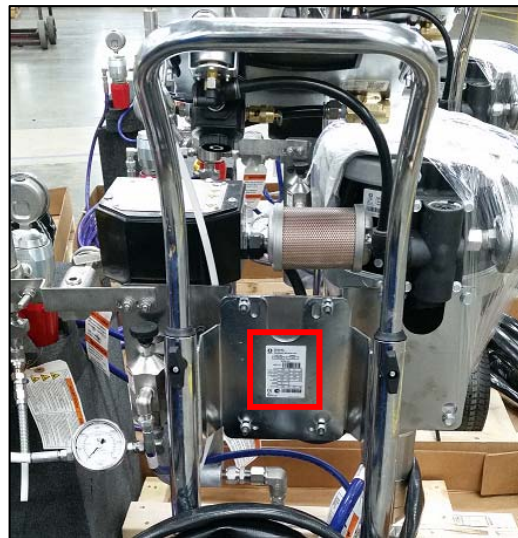


Image 2

The serial number is located on the side of a barcode and has the following configuration: A00XXX (image 3).



Image 3

Spray Wax Aftersales Support Program

2. Placing an order for consumables/components

Toyota service technicians and service managers at each dealer will be able to place an order via the Toyota SST hotline.

Toyota SST Hotline: 800-933-8335 (prompt #4 – KOD Application)

Please have the serial number of the Spray Wax Machine available on hand.

The parts list below is available as *consumables used for the cleaning procedure:

	SELLABLE PART NUMBER	IMAGE	DESCRIPTION
Rust Removal Kit	SP04500032		HEX ADAPTER 48"
	SP04504995		BRUSH, STEEL 2X4
	SP04500132		BRUSH, STEEL 1X4 LONG
	SP04505029		AIR NOZZLE 24"

*For parts available in stock the average shipping occur within 48 hours after the order is placed.





The parts list below is available as *consumables used in the high pressure gun and main filter unit:

Filters	SP04500198		HIGH PRESSURE GUN FILTER XTR501 FILTER ELEMENT
	SP04500252		MAIN FILTER UNIT #100 MESH FILTER ELEMENT

*For parts available in stock the average shipping occur within 48 hours after the order is placed.

Spray Wax Aftersales Support Program

The parts list below is available with the *spare components used for the drying procedure:

	SELLABLE PART NUMBER	IMAGE	DESCRIPTION
Drying Tool Kit	SP04505508		HOSE
	SP04505509		SNOUT KIT
	SP04505510		REDUCER
	SP04505511		HOSE CLAMP

*For parts available in stock the average shipping occur within 48 hours after the order is placed.

The parts list below is available with the *spare components used on the Spray Wax Machine for the spraying procedure:

SELLABLE PART NUMBER	IMAGE	DESCRIPTION
SP04500196		AIRLESS HOSE 1/4"
SP04500313		GAUGE, 0-5000 PSI
SP04500312		GAUGE, 0-1000 PSI
SP04500197		GAUGE, 0-3000 PSI
SP04508754		TEMPERATURE GAUGE
SP04500251		TIP NUT GASKET
TOYSW-20191		HIGH PRESSURE REGULATOR ASSEMBLY
TOYSW-20192		LOW PRESSURE REGULATOR ASSEMBLY

Spray Wax Aftersales Support Program

*For parts available in stock the average shipping occur within 48 hours after the order is placed.

The parts list below is available with the *spare components used on the Spray Wax Machine for the spraying procedure:

SELLABLE PART NUMBER	IMAGE	DESCRIPTION
TOYSW-20193		HIGH PRESSURE GUN ASSEMBLY
TOYSW-20194		LOW PRESSURE GUN ASSEMBLY
SP04503694		ANGLED NOZZLE
SP04508742		THROAT SEALING LIQUID 8 OZ BOTTLE
SP04508739		AIR MOTOR MUFFLER

*For parts available in stock the average shipping occur within 48 hours after the order is placed.

Spray Wax Aftersales Support Program

3. Placing an order for exchange units

Toyota service technicians and service managers at each dealer will be able to place an order for exchange units via the Toyota SST hotline.

Toyota SST Hotline: 800-933-8335 (prompt #4 – K0D Application).

Please have the serial number of the Spray Wax Machine available on hand.

Prior to contacting Bosch for a replacement wand ensure that the filter condition is verified. For more information, please refer to the Toyota TI on how to verify and clean the filter.

The parts list below is available with *exchange units available in the program:

FLOAT POOL PART NUMBER	IMAGE	DESCRIPTION
SRVSP04500192TY		TOYOTA SPRAY WAX EQUIPMENT
SRV0219TY		TOYOTA SPRAY WAX SHORT WAND
SRV0319TY		TOYOTA SPRAY WAX LONG WAND
SRVSP04505506TY		E-TES HEATER
SRVSP04506316TY		AIR BLOWER

*For parts available in stock the average shipping occur within 1 business day after the order is placed.

Return shipping labels will be included with each express **exchange shipment. It is mandatory that the packaging is kept and reused to send the units back to Bosch. If the return UPS shipping labels are lost or damaged, replacement labels can be requested via the Toyota SST Hotline: 800-933-8335 (prompt #4 – K0D Application).

**The Toyota Spray Wax Machine is shipped via LTL freight, and your dealership will be contacted in order for the pick-up to be scheduled. It is mandatory that the packaging is kept and reused to send the unit back to Bosch.

Given the limited availability of these units, it is important that each dealer returns the “Express Exchange Units” once they receive the new unit