



Technical Service Bulletin

20 MIL on, DTC P310B00, P008700, P014800, P120F00 or P030000 stored in the ECM

20 20 30 2060377/2 September 18, 2020. Supersedes Technical Service Bulletin Group 20 number 20-29 dated August 13, 2020 for reasons listed below.

Model(s)	Year	VIN Range	Vehicle-Specific Equipment
A8, S8	2019	All	4.0 TFSI
A8, S8	2020	000001 – 013065 Or 000001 - 013756	4.0 TFSI

Condition

REVISION HISTORY		
Revision	Date	Purpose
2	-	Revised title Revised <i>Condition</i> (Added possible additional DTCs)
1	08/13/2020	Initial publication

Customer states:

- MIL on.
- Or
- The engine does not start or intermittently does not start.

Workshop findings:

- According to the specific ambient conditions the low fuel pressure actual value is smaller than the low fuel pressure specified value.

The following DTC may be stored in the engine control module (ECM), J623 (address word 0001):

- **DTC P310B00** (low fuel pressure control, fuel pressure outside specification).

Additional DTC's that may be stored upon misfiring could also include:

- **DTC P008700** (Fuel Rail/System Pressure - Too Low).
- **DTC P014800** (Fuel Delivery Error).
- **DTC P120F00** (Cold Start Fuel Pressure Performance Bank 2).
- **DTC P030000** (Random/Multiple Cylinder Misfire Detected).



Technical Service Bulletin

Technical Background

Not applicable.

Production Solution

Improved part has been implemented into production.

Service

1. Check the fuel line 06M 133 986 AD (Quick Connector) for a defect. Compare with Figure 1.

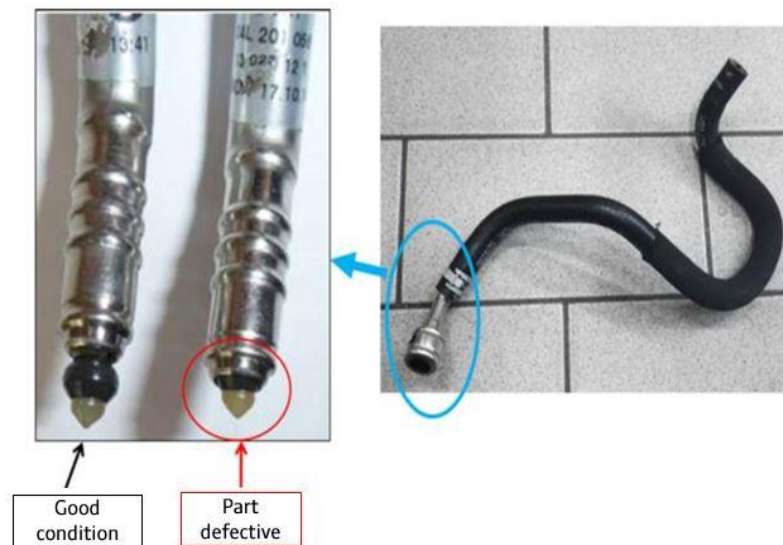


Figure 1. Good condition part or defective part.



Technical Service Bulletin

2. A non-concentric fit of valve stem can be a further indication of internal component damage. Compare with Figure 2.

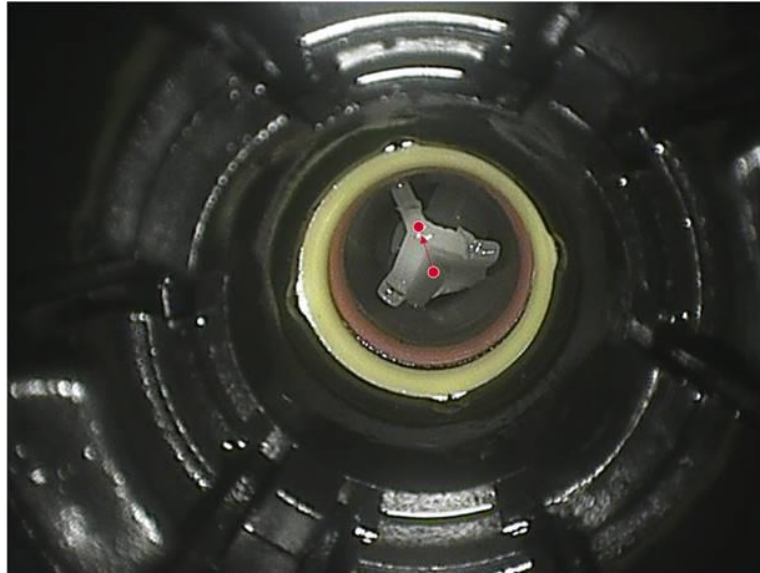


Figure 2. Check the valve stem fit.

3. Should you find an irregularity, then replace the damaged component.
4. Please take photos and upload them into DOC-IT with the repair order. Photos should:
- Have a date stamp and VIN reference.
 - Be taken in focus and with sufficient light.

Warranty

Claim Type:	<ul style="list-style-type: none">• 110 up to 48 Months/50,000 Miles.• G10 for CPO Covered Vehicles – Verify Owner.• If the vehicle is outside any warranty, this Technical Service Bulletin is informational only.		
Service Number:	2441		
Damage Code:	0010		
Labor Operations:	Fuel line engine compartment remove + reinstall	2037 5599	50 TU
Diagnostic Time:	GFF	0150 0000	Time stated on the diagnostic



Technical Service Bulletin

			protocol (Max 20 TU)
	Road test prior to the service procedure	0121 0002	10 TU
	Road test after the service procedure	0121 0004	10 TU
Claim Comment:	As per TSB #2060377/2		

All warranty claims submitted for payment must be in accordance with the *Audi Warranty Policies and Procedures Manual*. Claims are subject to review or audit by Audi Warranty.

Required Parts and Tools

Always check with your Parts Department and/or ETKA for the latest information and parts bulletins.		
Part Number	Part Description	Quantity
See ETKA	Fasteners, Bolts, Nuts, and Screws as needed per the Repair Manual	See ETKA/ELSA
06M133986AD	Fuel line	01

Tool Number	Tool Description
VAS 6160/VAS 6150	VAS tester with current version of ODIS (Windows 10)

Additional Information

All parts and service references provided in this TSB (2060377) are subject to change and/or removal.

©2020 Audi of America, Inc. All rights reserved. The information contained in this document is based on the latest information available at the time of printing and is subject to the copyright and other intellectual property rights of Audi of America, Inc., its affiliated companies and its licensors. All rights are reserved to make changes at any time without notice. No part of this document may be reproduced, stored in a retrieval system, or transmitted in any form or by any means, electronic, mechanical, photocopying, recording, or otherwise, nor may these materials be modified or reposted to other sites without the prior expressed written permission of the publisher.