

## STAR ONLINE PUBLICATION

**Case Number:** S2008000136

**Release Date:** 09/01/2020

**Symptom/Vehicle Issue:** Passenger Air Bag Disable Lamp On Flashing When PADL Switch Is Connected

**Customer complaint/ technician observation:** Owner complains after a recent repair the passenger air bag on lamp flashes. Technician may observe DTC B2770 -13 Passenger Airbag Disable Off Lamp - Circuit Open; as stored or active.

**Discussion:** The ORC module pulls the voltage to ground to illuminate the PADL (Passenger Airbag Disable Lamp Off) based on messages received from the OCM in the passenger seat. US built vehicles only have an **off lamp** – Export vehicles have ON and OFF lamps; verify the correct PADL (Passenger Airbag Disable Lamp) switch assembly. Repair any ORC/OCM DTC's that may be setting.

Check all circuits at connector D3159A looking for broken or pushed out wires. If the A pillar was de-trimmed, inspect for any pinched circuits and or a loose XY321A connector Fig 1, 2, 3, 4.

For domestics, LIN circuit #R168 (Pin # 18 of the ORC module connector).

For BUX vehicle the LIN circuit #R167 (Pin # 20 of the ORC module connector).

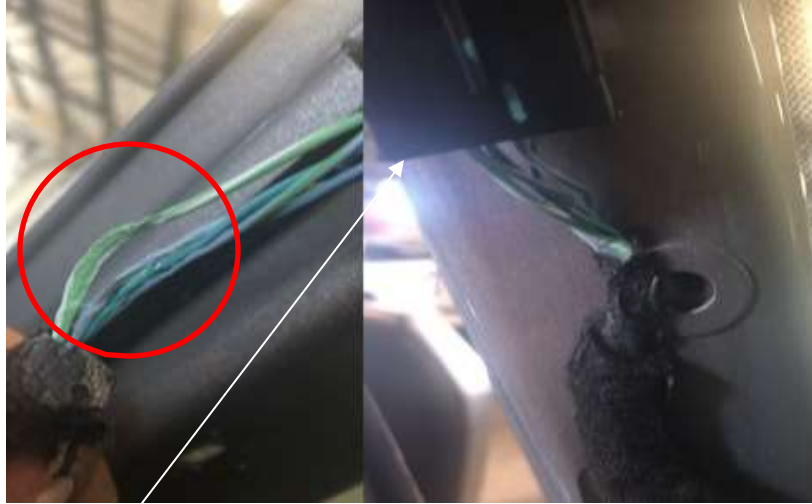


Fig 1

This document does not authorize warranty repairs. This communication documents a record of past experiences. STAR Online does not provide any conclusions about what is wrong with the vehicle. Rather, it captures all previous cases known that appear to be similar or related to the vehicle symptom / condition. You are the expert, and you are responsible for deciding on the appropriate course of action.

**Contact STAR Center, or your Technical Assistance Center Via TechCONNECT or eCONTACT ticket if no solution is found**

## STAR ONLINE PUBLICATION



Pinched harness after trim installation

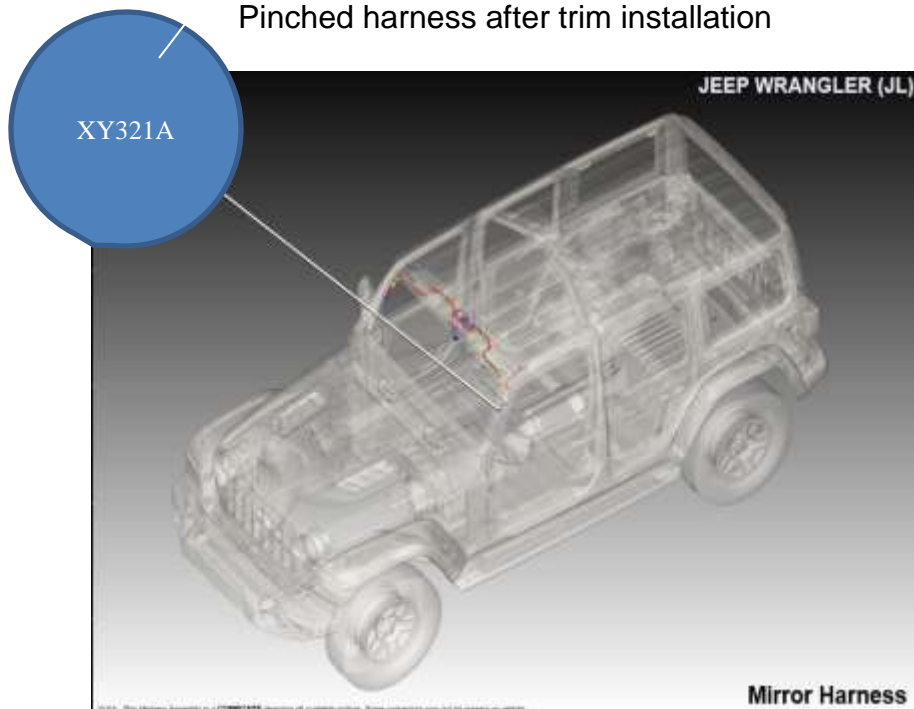


Fig 2

This document does not authorize warranty repairs. This communication documents a record of past experiences. STAR Online does not provide any conclusions about what is wrong with the vehicle. Rather, it captures all previous cases known that appear to be similar or related to the vehicle symptom / condition. You are the expert, and you are responsible for deciding on the appropriate course of action.

**Contact STAR Center, or your Technical Assistance Center Via TechCONNECT or eCONTACT ticket if no solution is found**

# STAR ONLINE PUBLICATION

## JL Wiring Example

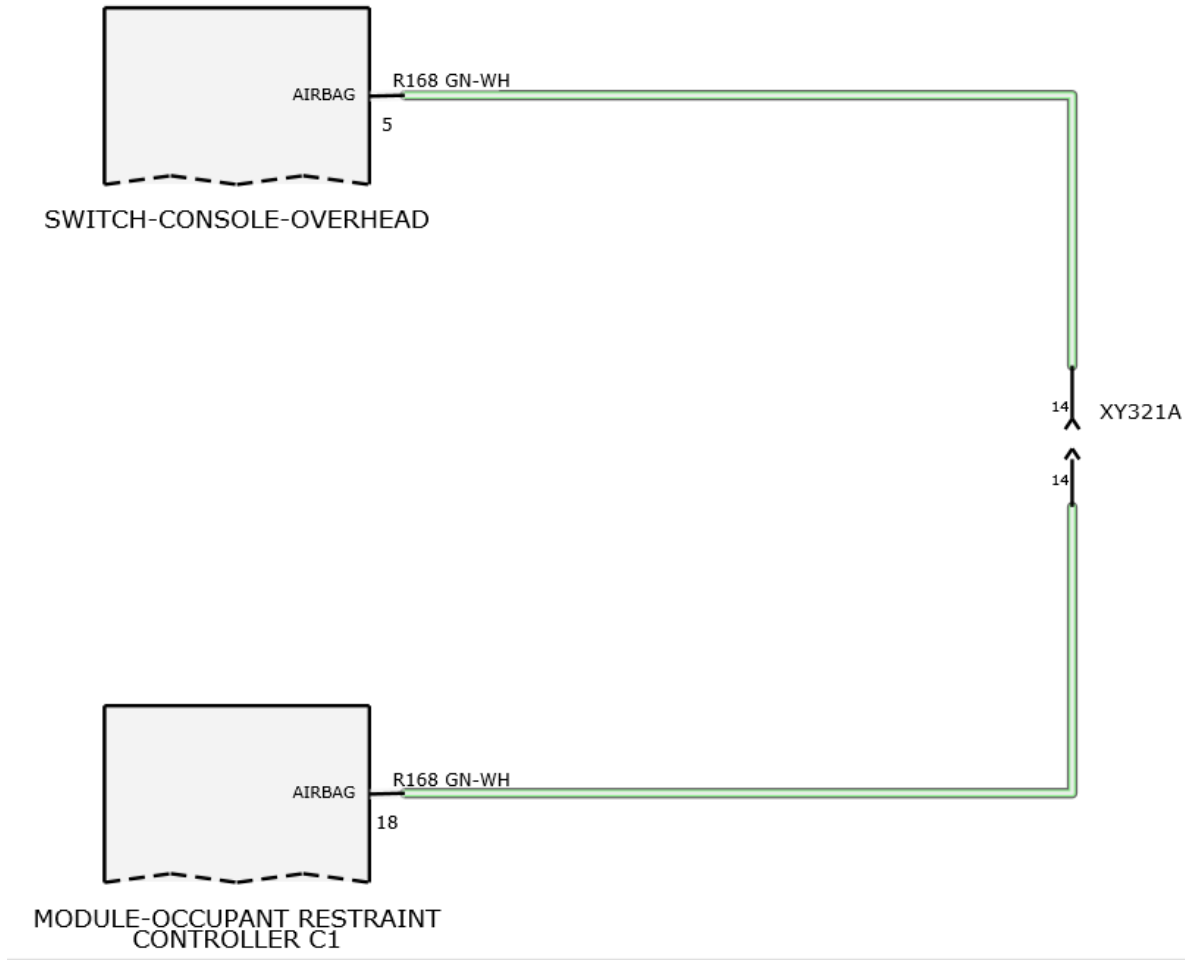
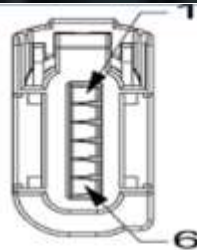


Fig 3

This document does not authorize warranty repairs. This communication documents a record of past experiences. STAR Online does not provide any conclusions about what is wrong with the vehicle. Rather, it captures all previous cases known that appear to be similar or related to the vehicle symptom / condition. You are the expert, and you are responsible for deciding on the appropriate course of action.

**Contact STAR Center, or your Technical Assistance Center Via TechCONNECT or eCONTACT ticket if no solution is found**

## STAR ONLINE PUBLICATION



NOTE: When connector cavities are identified as "NO CONNECT" in the following table, there may be "Dummy (blunt cut) wires" or Cavities may be "Open", "Plugged, or "Flashed over" depending on vehicle option content.

Pin	Circuit	Wire Color	Gauge/Size	Function	Option
1	A238	RD/BU	0.50	FUSED B(+)	
2	F916	PK/BU	0.50	FUSED IGNITION RUN/START	
3	E12	OC/GY	0.35	PANEL LAMP'S DRIVER	
4	D402	OC/VT	0.50	LIN BUS CBC 2	
5	R168	GN/WH	0.50	AIRBAG OFF LAMP PASSENGER	
6	Z910	BK	0.50	GROUND	

Fig 4

This document does not authorize warranty repairs. This communication documents a record of past experiences. STAR Online does not provide any conclusions about what is wrong with the vehicle. Rather, it captures all previous cases known that appear to be similar or related to the vehicle symptom / condition. You are the expert, and you are responsible for deciding on the appropriate course of action.

**Contact STAR Center, or your Technical Assistance Center Via TechCONNECT or eCONTACT ticket if no solution is found**