



# Service Bulletin

Bulletin No.: 20-NA-173

Date: September, 2020

## TECHNICAL

**Subject:** Service Vehicle Soon Light Illuminated, DTC P0534 Set

Brand:	Model:	Model Year:		Breakpoint:		Engine:	Transmission:
		from	to	from	to		
Chevrolet	Bolt EV	2017	2019	—	—	—	—

<b>Involved Region or Country</b>	North America, Europe, China
<b>Condition</b>	Some customers may comment on the Service Vehicle Soon light being illuminated. This condition may be more noticeable in colder weather. Technicians may find DTC P0534 set.
<b>Cause</b>	This condition may be caused by a glitch in the Hybrid/EV Powertrain Control Module 2 software that sets DTC P0534.
<b>Correction</b>	Check the function of the A/C system and make sure the refrigerant is at the proper fill. If the A/C system and refrigerant is correct then update the Hybrid/EV Powertrain Control Module 2 with the latest software. If the refrigerant is low, follow the service manual diagnostics to repair and update the Hybrid/EV Powertrain Control Module 2 with the latest software.

### Service Procedure

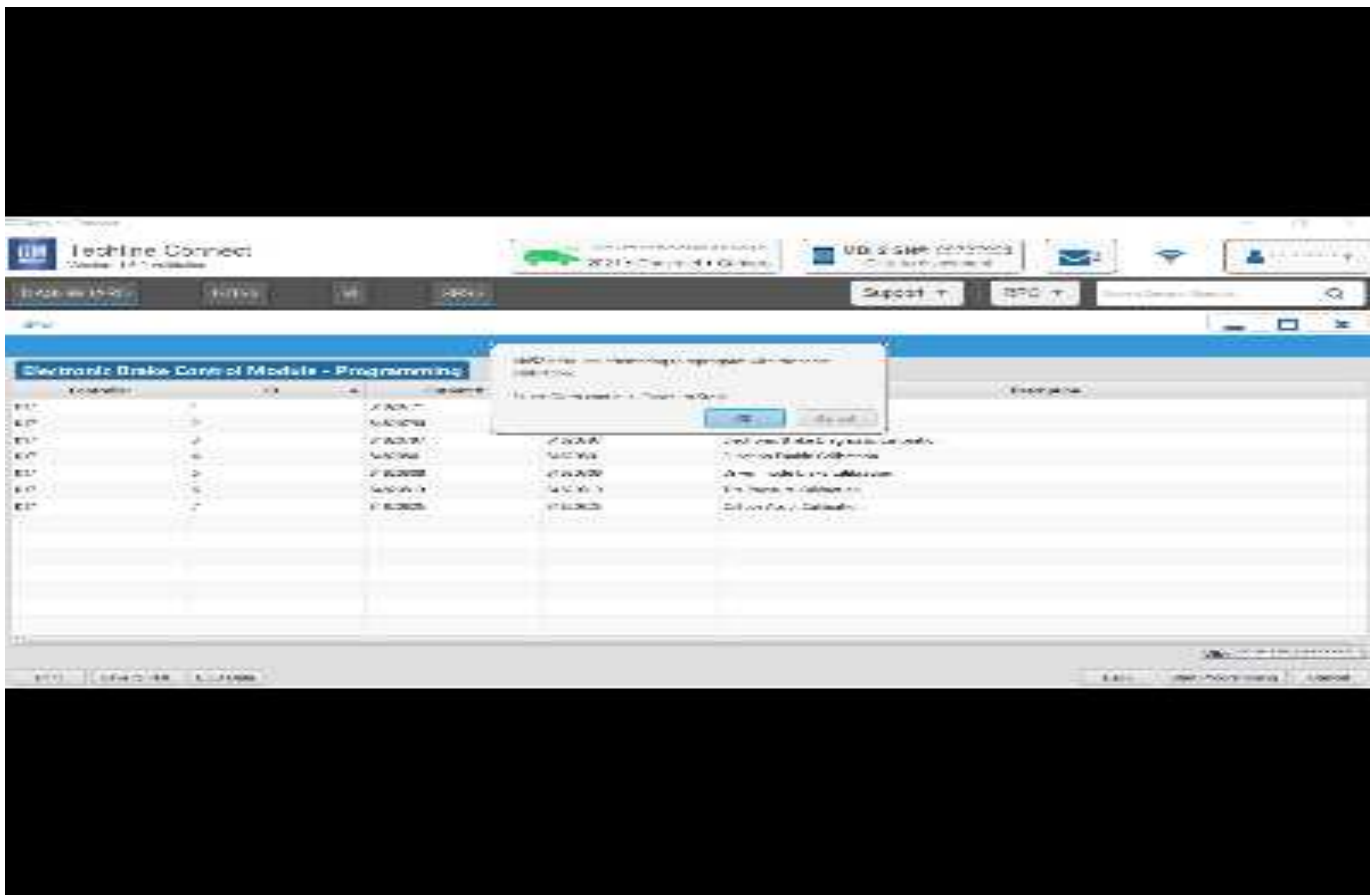
**Caution:** Before downloading the update files, be sure the computer is connected to the internet through a network cable (hardwired). DO NOT DOWNLOAD or install the files wirelessly. If there is an interruption during programming, programming failure or control module damage may occur.

**Note:** Carefully read and follow the instructions below.

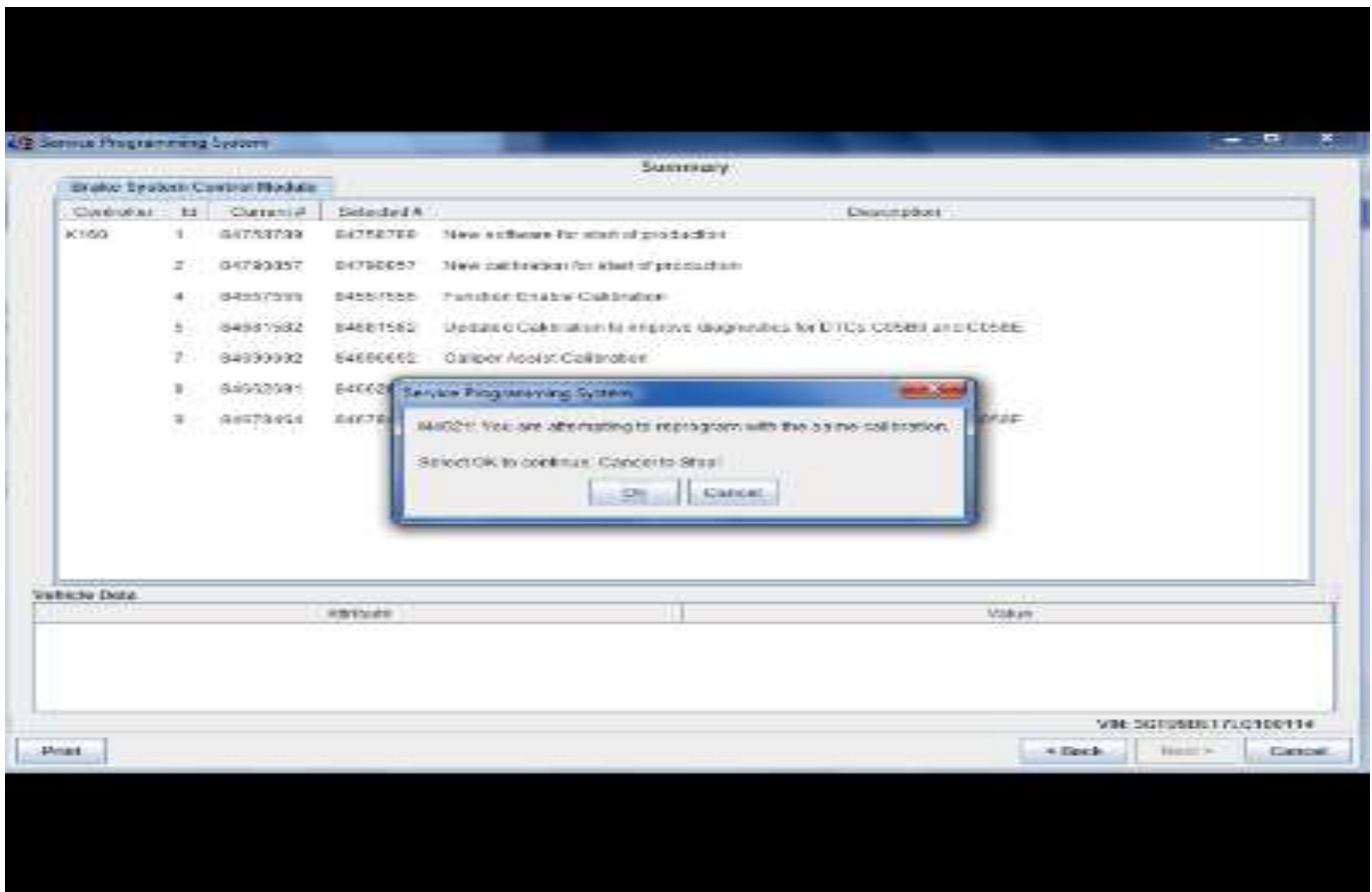
- Ensure the programming tool is equipped with the latest software and is securely connected to the data link connector. If there is an interruption during programming, programming failure or control module damage may occur.
- Stable battery voltage is critical during programming. Any fluctuation, spiking, over voltage or loss of voltage will interrupt programming. Install a GM Authorized

Programming Support Tool to maintain system voltage. Refer to [www.gmdesolutions.com](http://www.gmdesolutions.com) for further information. If not available, connect a fully charged 12V jumper or booster pack disconnected from the AC voltage supply. DO NOT connect a battery charger.

- Ensure the ignition is turned OFF, load on the vehicle's battery such as; interior lights, exterior lights (including daytime running lights), HVAC, etc. may affect the download process.
- Turn OFF or disable systems that may put a load on the vehicles battery such as; interior lights, exterior lights (including daytime running lights), HVAC, radio, etc.
- Clear DTCs after programming is complete. Clearing powertrain DTCs will set the Inspection/Maintenance (I/M) system status indicators to NO.



5644477



5431207

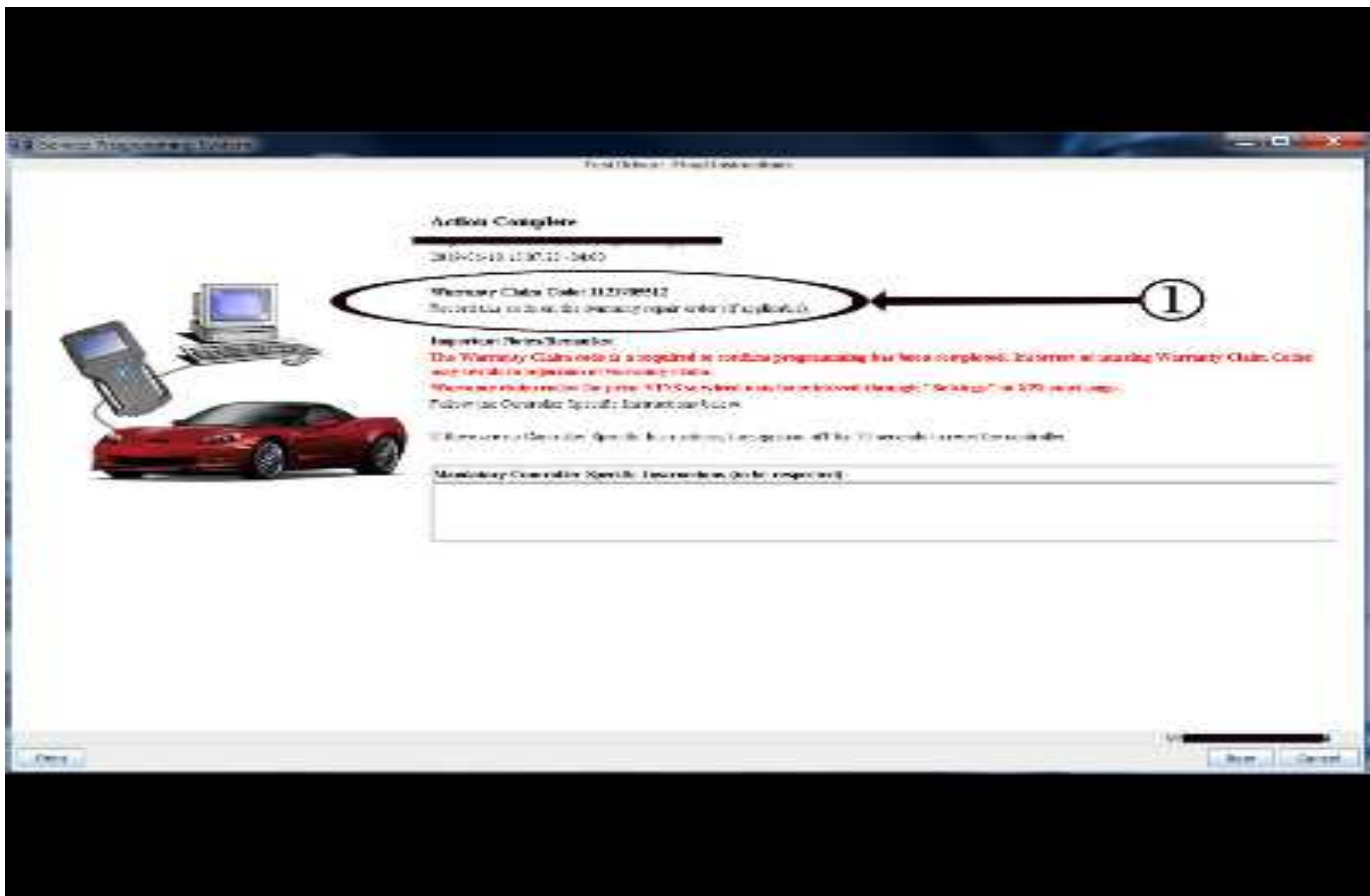
**Important:** Techline Connect and TIS2WEB screens shown above.

**Important:** If the Same Calibration/Software Warning is noted on the TLC or SPS Summary screen, select OK and follow screen instructions. After a successful programming event, the WCC is located in the Service Programming System dialogue box of the SPS Summary screen. No further action is required. Refer to the Warranty Information section of this bulletin.

**Important:** When programming a module in GM's new Vehicle Intelligence Platform, or VIP, the power mode (ignition) needs to be off or errors may occur. This involves the 2020 Chevrolet Corvette, Cadillac CT5 and CT4, as well as the upcoming full-size Chevrolet, GMC, Cadillac SUVs and Buick Envision. Serial Data Message Authentication also needs to have the ignition off.

1. Reprogram the Hybrid/EV Powertrain Control Module 2. Refer to *K114B Hybrid/EV Powertrain Control Module 2: Programming and Setup* in SI. Modify as required (e.g., select x module from the controller screen). Then provide step-by-step instructions or refer to SI procedure.





5431209

**Important:** To avoid warranty transaction rejections, you **MUST** record the warranty claim code provided on the SPS Warranty Claim Code (WCC) screen shown above on the job card. Refer to callout 1 above for the location of the WCC on the SPS screen.

2. Record the SPS Warranty Claim Code on the job card for warranty transaction submission.

**Parts Information**

No parts are required for this repair.

**Warranty Information**

For vehicles repaired under warranty, use:

Labor Operation	Description	Labor Time
2810265	Hybrid Powertrain Control Module 2 Reprogramming with SPS	Use Published Labor Operation Time

**Important:** To avoid warranty transaction rejections, carefully read and follow the instructions below:

- The SPS Warranty Claim Code must be accurately entered in the “SPS Warranty Claim Code” field of the transaction.
- When more than one Warranty Claim Code is generated for a programming event, it is required to document all Warranty Claim Codes in the “Correction” field on the job card. Dealers must also enter one of the codes in the “SPS Warranty Claim Code” field of the transaction, otherwise the transaction will reject. It is best practice to enter the FINAL code provided by SPS/SPS2.

**Warranty Claim Code Information Retrieval**

If the SPS Warranty Claim Code was not recorded on the Job Card, the code can be retrieved in the SPS system as follows:

1. Open TLC/TIS on the computer used to program the vehicle.
2. Select and start SPS/SPS2.
3. Select Settings.
4. Select the Warranty Claim Code tab.

The VIN, Warranty Claim Code and Date/Time will be listed on a roster of recent programming events. If the code is retrievable, dealers should resubmit the transaction making sure to include the code in the SPS Warranty Claim Code field.

<b>Version</b>	1
<b>Modified</b>	Released September 03, 2020

