



# Technical Journal

TITLE:

**Left engine pad click sound**

<b>REF NO:</b> TJ 33442.10.0	<b>ISSUING DEPARTMENT:</b> Technical Service	<b>CAR MARKET:</b> United States and Canada	
<b>PARTNER:</b> 3 US 7510 Volvo Car USA		<b>ISSUE DATE:</b> 2020-09-25	<b>STATUS DATE:</b> 2020-10-07
<b>FUNC GROUP:</b> 2180	<b>FUNC DESC:</b> Engine mounting	Page 1 of 6	

“Right first time in Time”

## Attachment

File Name	File Size
<a href="#">Click sound TJ33442.wav</a>	5.4025 MB
TJ33442 Lubricate.pptx	1.0869 MB
TJI-514276-1_1_0_en-US.pdf	0.5164 MB

## Vehicle Type

Type	Eng	Eng Desc	Sales	Body	Gear	Steer	Model Year	Plant	Chassis range	Struc Week Range
234							2017-2019		-	201617-201919
235							2017-2019		-	201624-201919
236							2017-2019		-	201646-201919
238							2017-2019		-	201646-201919
246							2018-2019		-	201717-201919
256							2016-2019		-	201505-201919

## CSC Customer Symptom Codes

Code	Description
F3	Complete vehicle/Unusual noise/During acceleration
F2	Driving/Unusual noise/During acceleration



## VST Operation Number

VST Operation Number	Description
98494-2	Screw engine pad replace acc. to TJ33442

## DTC Diagnostic Trouble Codes

Rows beginning with \* are modified

Note! If using a printed copy of this Technical Journal, first check for the latest online version.

### DESCRIPTION:

\*Structure week updated. Example of Lubricant added. When writing a report add video and sound file.

If the vehicle has a click sound from the left engine pad during driving, (a metallic click sound from A-pillar area)

Sound file with clicking noise added. (For best sound, use headphones)

Follow the advice under "Service".

### SERVICE:

Separate the engine pad and lubricate with graphite (see attachment), then follow instruction new screw and washer.

Torque 10 NM.

\* Example of Lubricant to use Wurth P/N 0893240016.

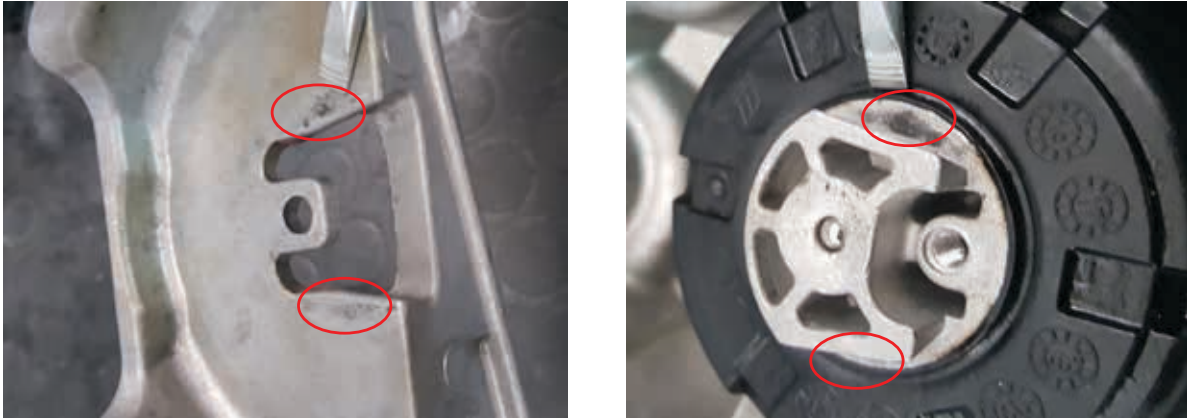
### VEHICLE REPORT:

Yes, please submit a Vehicle Report if click sound returns after repair \* and add video and sound file.

Use concern area "Vehicle Report" and sub concern area "Support not needed", use function group 2180.

**To view TJ attachment continue to the next page. This TJ has three attachments.**

## SPA – Left engine pad click sound



Put lubricating grease with graphite on red marked points as in pictures above.

TJ33442



## Volvo Car Customer Service

TJ Instruction VCC-514276-1

<b>Title</b>	Engine Pad Left	<b>Page</b>	1 ( 3 )
<b>Action</b>	Product fix	<b>Operation number:</b>	98949-2

<b>Issue</b>	<b>Date</b>	<b>Reason</b>
1	2018-11	First issue

### Affected vehicles

<b>Model year</b>	<b>Model</b>	<b>Engine</b>
2019	S60 (19-)	B4204T23, T26, T27, T45
2017, 2018, 2019	S90 (17-)	B4204T20, T23, T26, T27, T29, T31, T44 D4204T14, T16, T23, T7, T9
2019	V60 (19-)	B4204T23, T26, T27, T29, T45, T46 D4204T14, T16, T4, T9
2019	V60 Cross Country (19-)	B4204T23 D4204T14, T4
2017, 2018, 2019	V90 (17-)	B4204T23, T26, T27, T29, T31, T44 D4204T14, T16, T23, T4, T7, T9 D420T7
2017, 2018, 2019	V90 Cross Country	B4204T20, T23, T26, T27, T29 D4204T14, T23, T7
2018, 2019	XC60 (18-)	B4204T20, T23, T26, T27, T29, T44 D4204T14, T23, T4, T7
2016, 2017, 2018, 2019	XC90 (16-)	B4204T20, T23, T26, T27, T29 D4204T11, T14, T23, T6

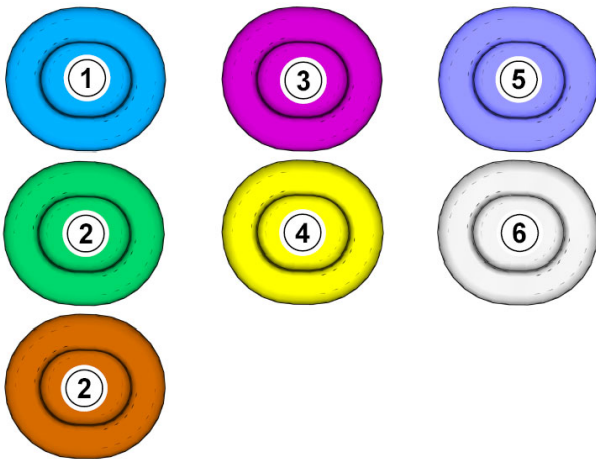
### Materials

<b>Materials</b>	<b>Qty.</b>	<b>Part No.</b>	<b>Notes</b>
Washer	1.0	986509	
Flange screw	1.0	989857	

## Removal

**Note! Removal steps in this procedure may contain installation details.**

## Color symbols

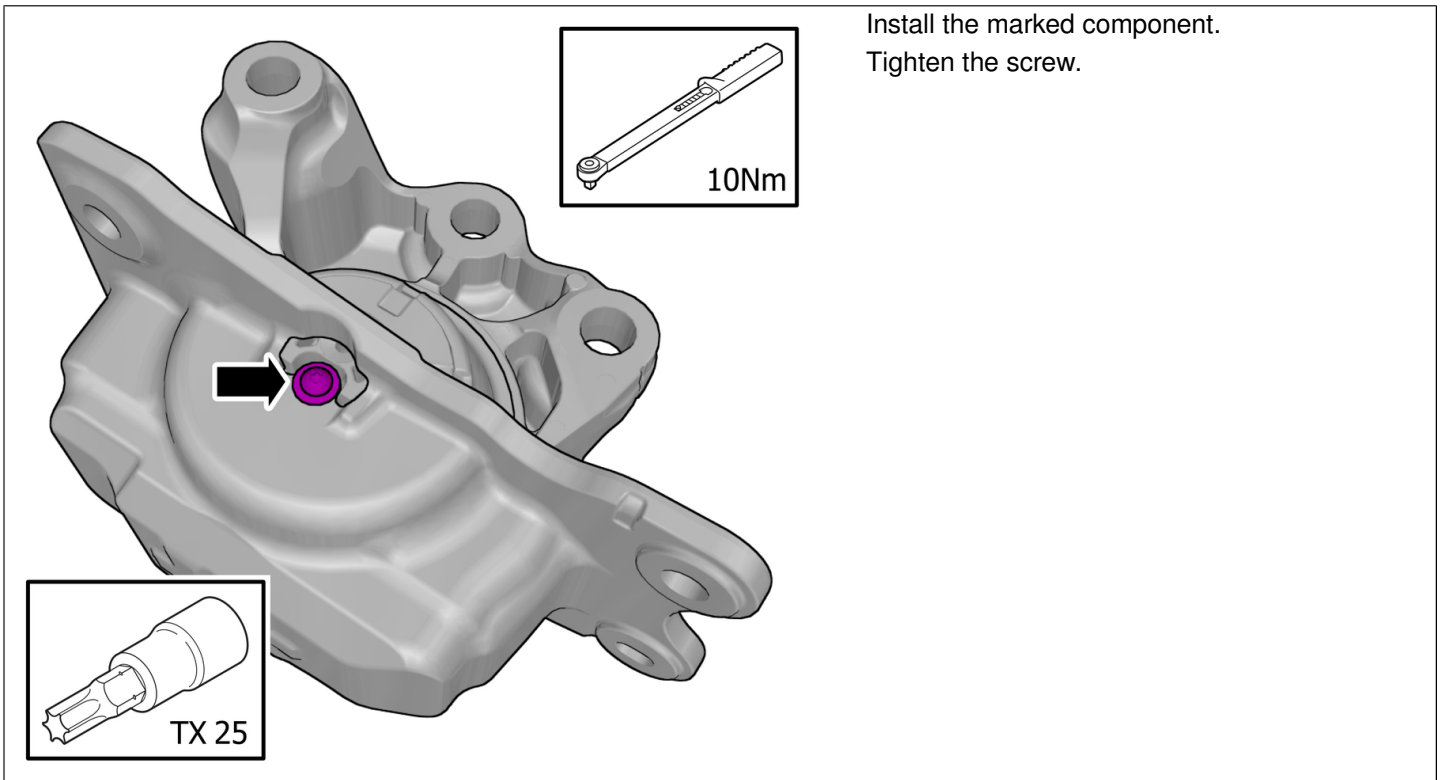
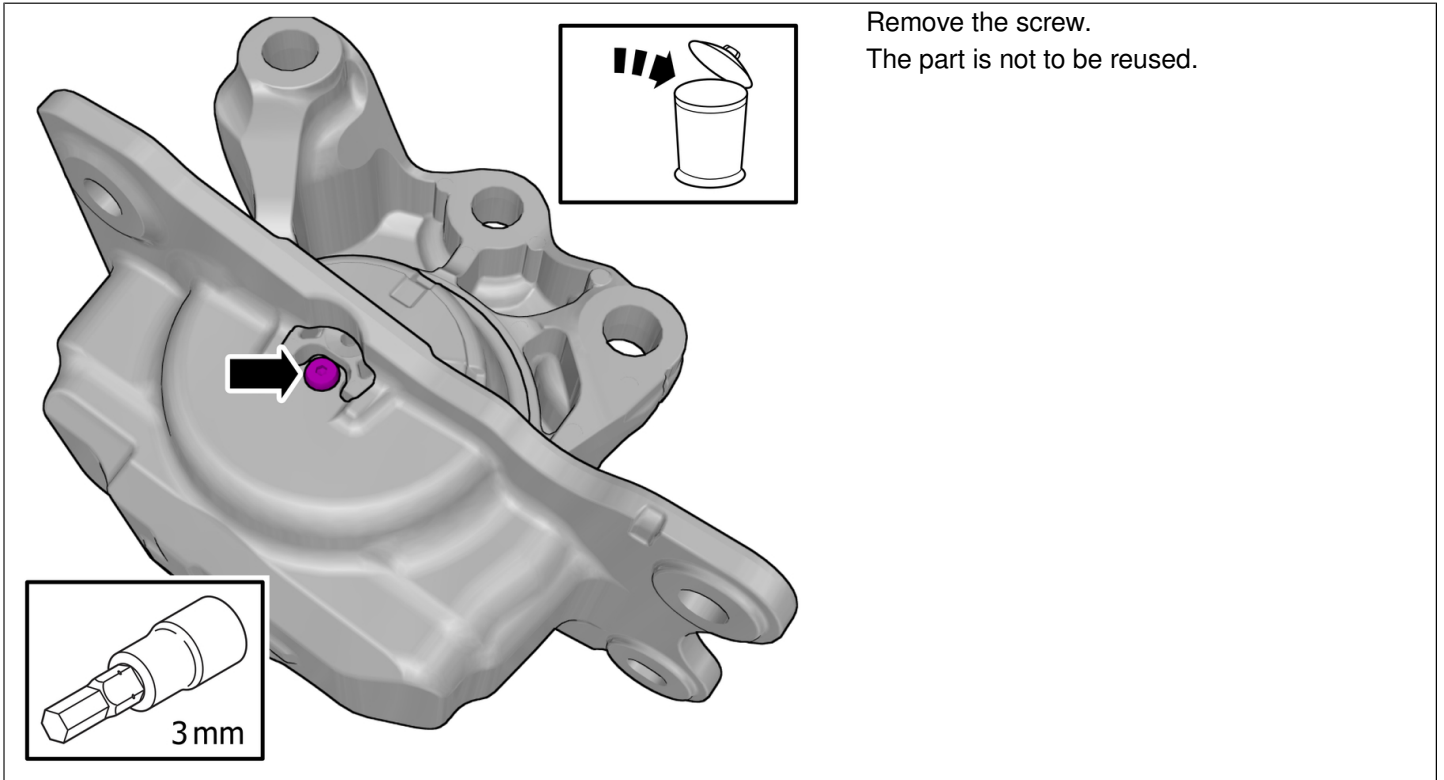


**Note! This colour chart displays (in colour print and electronic version) the importance of the different colours used in the images of the method steps.**

- 1 . Used for focused component, the component with which you will do something.
- 2 . Used as extra colors when you need to show or differentiate additional parts.
- 3 . Used for attachments that are to be removed/installed. May be screws, clips, connectors, etc.
- 4 . Used when the component is not fully removed from the vehicle but only hung to the side.
- 5 . Used for standard tools and special tools.
- 6 . Used as background color for vehicle components.

Remove left-hand engine support insulator , refer to:

- Removal, replacement and installation
- 2 - Engine with mountings and equipment
- 21 - Engine
- 218 - engine mounting



**Installation**

To install, reverse the removal procedure.