



**ATTENTION: This Technical Service Bulletin was issued by Southeast Toyota Distributors, LLC.**

**For Toyota Dealers located within the Southeast Region:** Please refer to SET Dealer Daily to obtain instructions on how to order parts and submit a warranty claim (If applicable).

**For Lexus Dealers or Toyota Dealers NOT located in Florida, Georgia, Alabama, South Carolina or North Carolina:** For Repair Authorization, Parts Ordering, and Warranty Claims please contact Southeast Toyota Distributors Warranty Claims Department:

(888)851-2722

Press 5, then Press 4 for Out of Region SET Repairs

[Accessory.Warranty@SEToyota.com](mailto:Accessory.Warranty@SEToyota.com)

Thank you for your continued support.

# SET ACCESSORY WHEEL BUMPER / FENDER INTERFERENCE

## APPLICABILITY

YEAR(S)	MODEL(S)	INSTALLED ACCESSORY INFORMATION		
		DESCRIPTION	ACCESSORY CODE	KIT PART NUMBER
2015-17	4Runner	20in Gunner Wheel	WGBB20, AC1000, AC1010	00041-89600

**\*\*This Publication does not apply to Vehicles Originally Equipped with a factory Alloy Wheels or Wheels added by other manufacturers.**

## INTRODUCTION

Southeast Toyota installed accessory wheels at SET Vehicle Processing centers on 4Runner vehicles. Wheel installation requires additional modifications discussed in trim kit PTR25-89150. Should modifications have been performed improperly, the vehicle may experience an abnormal noise when in reverse with the wheels at or near full lock due to interference between the tire and bumper and/or fender liner. The following procedure will outline the inspection and repair procedures required to address this condition.

## WARRANTY INFORMATION

For Dealers located in the Southeast Region, Florida, Georgia, Alabama, South Carolina, or North Carolina, Submit Warranty claim utilizing the information below.

OP CODE	DESCRIPTION	TIME	OFF	T1	T2
AWG021	Trim Bumper Cover (Both sides)	0.5	00041-89600	99	99
Use combo code A for an additional 0.5hr if also modifying the inner wheel liner					
<b>Port Installed Option (PIO)</b> - is in effect for 36 months or 36,000 miles from the vehicle's in-service date, whichever occurs first. <i>Unless otherwise specified in vehicle VIN inquiry.</i>					
<b>Dealer Installed Option (DIO)</b> - is in effect for 12 months, regardless of mileage, from the date the part(s) was installed on the vehicle or the remainder of any applicable New Vehicle Limited Warranty, whichever provides greater coverage. <b><i>Because this TSB addresses a PIO installation error, warranty is only applicable to PIO installations.</i></b>					
<b>Over the Counter Sale (OCS)</b> - is in effect for 12 months, regardless of mileage, from the date the part(s) were sold. Labor is not warranted for over-the counter service part replacements.					

If you are a dealer located outside of the Southeast Region, please contact the SET Accessory Warranty Department at (888) 851-2722 or email [Accessory.Warranty@SEToyota.com](mailto:Accessory.Warranty@SEToyota.com) for claim payment instructions.

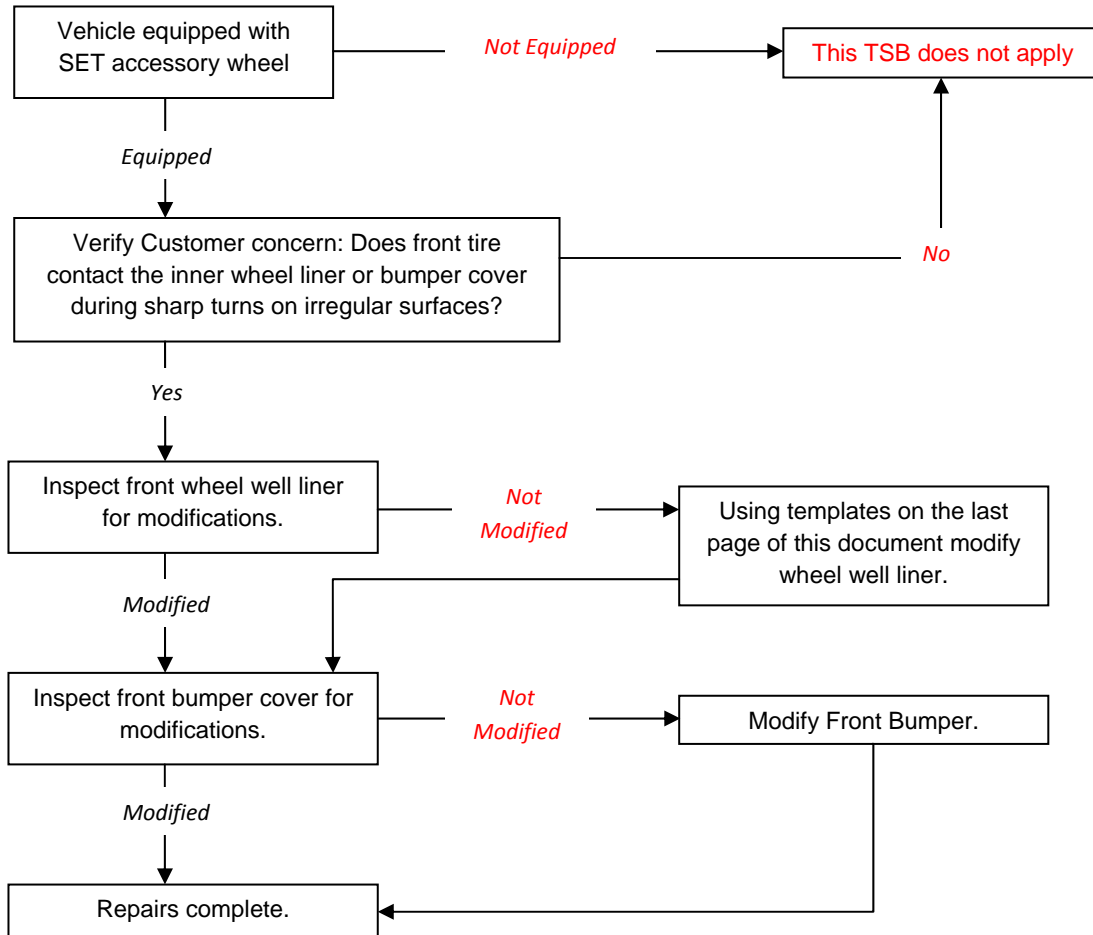
## PARTS INFORMATION

PART NUMBER	DISCRIPTION
NA	NA

If you are a dealer outside of the SET region, please contact the SET accessory department at (888) 851-2722 or email [Accessory.Warranty@SEToyota.com](mailto:Accessory.Warranty@SEToyota.com).

## ACCESSORY WHEEL INTERFERENCE

### REPAIR OVERVIEW



### ACCESSORY IDENTIFICATION

1. Perform TIS VIN inquiry or Service Lane Search
  - a. Port installed accessories are identified by the accessory code listed in application chart on page 1.
  - b. Dealer installed accessories can be identified by part number listed in the application chart on page 1 shown in service history.
  - c. This TSB does not apply to vehicles equipped with wheels other than what is indicated.

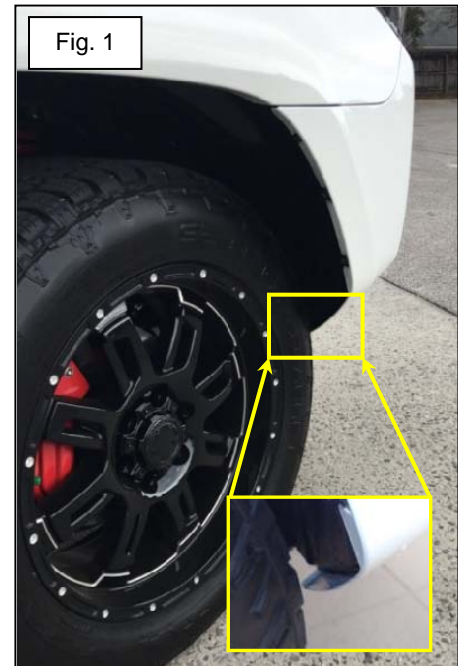


## ACCESSORY WHEEL INTERFERENCE

### VERIFY CONDITION

2. This Technical Service Bulletin addresses a concern of the front tire contacting the inner wheel liner and or front bumper cover while vehicle is operated in reverse with steering wheel at or near the full lock steering position. Fig. 1 illustrates the area contact may occur.

*Note: This TSB does not apply to contact in any other area.*



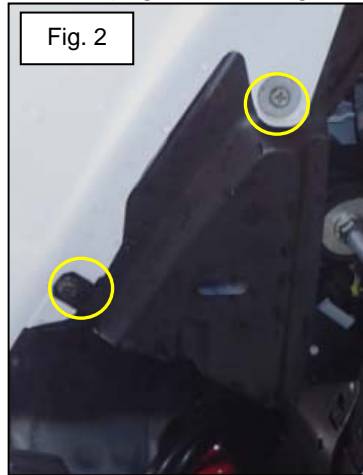
3. Verify vehicle is equipped with the correct tire size. The 20 inch Gunner wheel PN-00041-89600 utilizes Nitto Terragrappler G2 275/55R20

*Note: The use of oversized tires can cause this condition and cannot be remedied with this procedure.*

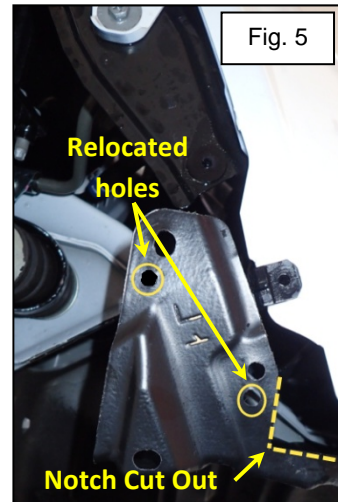
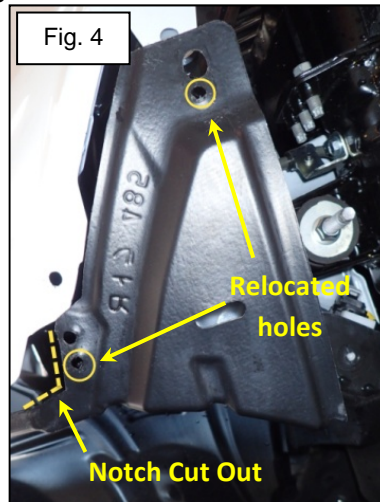
## ACCESSORY WHEEL INTERFERENCE

### INSPECTION AND REPAIR

4. Lift and Support Vehicle.
5. In front of the front wheels, remove the 10mm screws attaching the inner fender liner to the bumper cover. (Fig 2. Passenger side, Fig. 3 Driver side)



6. Inspect inner fender liner for modifications shown in Fig. 4 (Passenger side) and Fig. 5 (Driver side). If inner fender liner is not as shown, utilize the modification templates on pages 7 and 8 to relocate the holes and trim the inner liner.



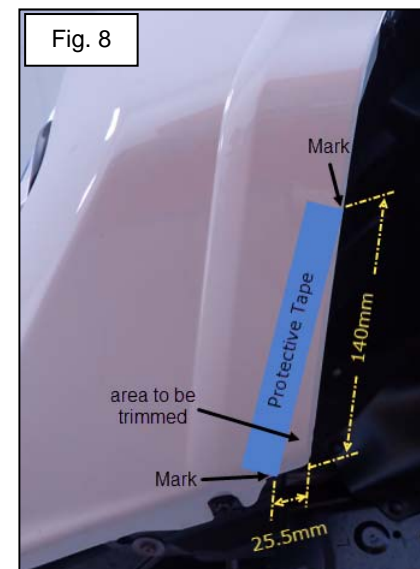
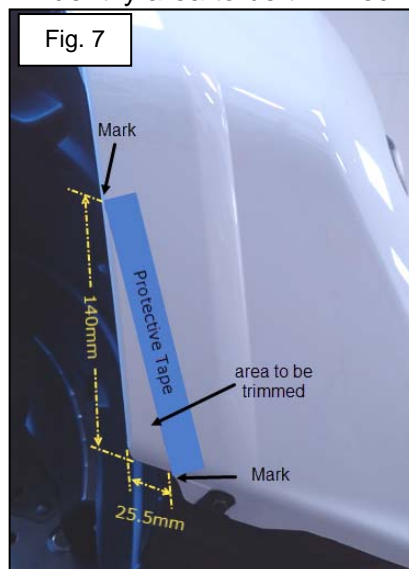
## ACCESSORY WHEEL INTERFERENCE

7. Inspect front bumper cover before proceeding. Fig. 6 indicates the area to be trimmed in the lower wheel well portion of the front bumper cover.

Do not attempt bumper cover trim procedures should the bumper cover have already been trimmed.



8. Trim front bumper cover.
  - a) On the front lower portion of the bumper cover, measure and mark as follows. Reference Fig. 7 (Passenger side) and Fig. 8 (Driver side)
    - Measure 25.5mm (1in) from the wheel opening along the bottom of the bumper cover. Mark the bumper cover with dry erase marker.
    - Measure 140mm (5.5in) from the bottom of the bumper cover along the wheel opening. Mark the bumper cover with dry erase marker.
    - Apply masking tape in a straight line between the two marks to identify area to be trimmed.



## ACCESSORY WHEEL INTERFERENCE

- b) Trim Driver and Passenger Bumper Cover with hand cutting plier. (Fig. 9)

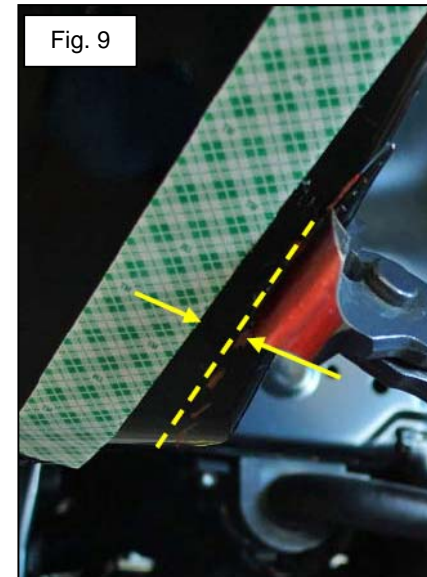
SET recommends the use of Modified CHANNELLOCK<sup>®</sup> cutting plier received in kit PTR25-89150 or equivalent.



*Hint: Two passes maybe required due to throat depth of plier.*

*Note: Power or Air tools are not recommended.*

- c) Use sanding block to sand cut surface smooth. (Fig. 10)



9. Install the 10mm screws attaching the inner fender liner to the bumper cover.



## ACCESSORY WHEEL INTERFERENCE

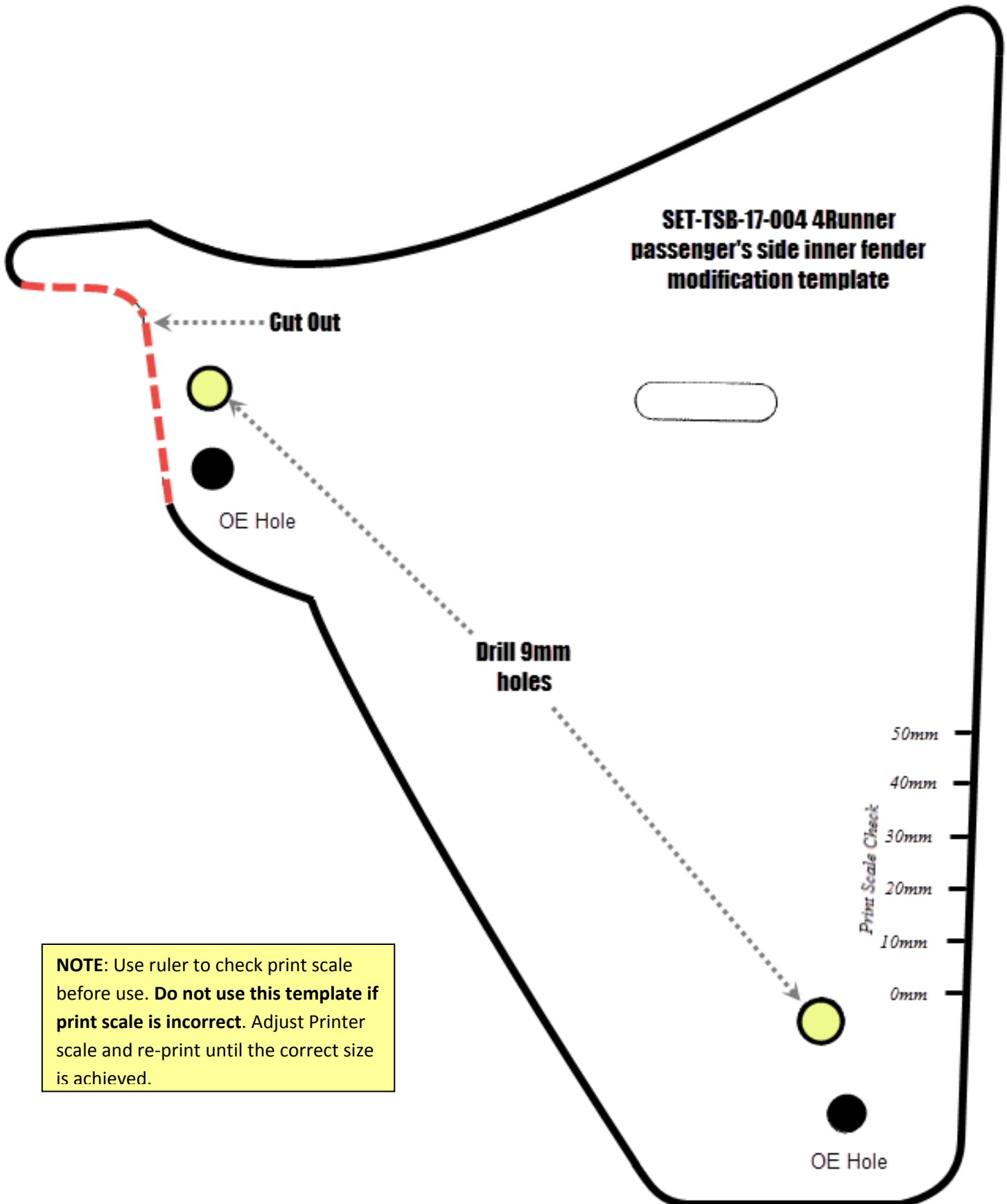
10. Confirm repairs. With vehicle assembled, Turn wheels to full lock to verify clearance between the tire and front bumper cover. (Fig. 11)





### ACCESSORY WHEEL INTERFERENCE

### SET-TSB-17-004 4Runner passenger's side inner fender modification template



**NOTE:** Use ruler to check print scale before use. **Do not use this template if print scale is incorrect.** Adjust Printer scale and re-print until the correct size is achieved.

## ACCESSORY WHEEL INTERFERENCE

**NOTE:** Use ruler to check print scale before use. **Do not use this template if print scale is incorrect.** Adjust Printer scale and re-print until the correct size is achieved.

