



Service Bulletin


Bulletin No.: 17-NA-097

Date: October, 2020

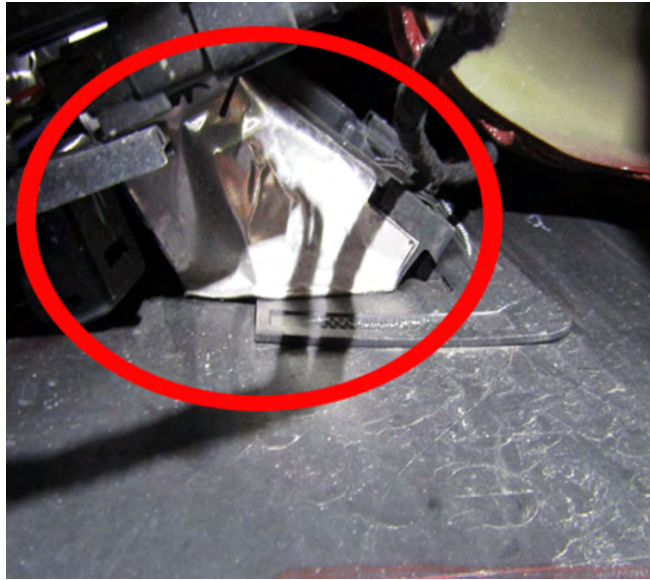
TECHNICAL

Subject: Side Blind Zone is Not Working Correctly and/or Incorrect Side Mirror Notification

Brand:	Model:	Model Year:		VIN:		Engine:	Transmission:
		from	to	from	to		
Chevrolet	Bolt EV	2017	2020	—	—	—	—
Opel/ Vauxhall	Ampera-e		2019	—	—	—	—

Involved Region or Country	North America, Europe, South Korea, Middle East
Additional Options (RPOs)	Equipped with Side Active Safety Obstacle Detection Enhanced (RPO UKC)
Condition	<p>Some customers may comment when driving, the side mirror indicates there is a vehicle present when there actually is not.</p> <p>The technician may find one or more of the following conditions:</p> <ul style="list-style-type: none"> • Wiring harness to the sensors may not be properly connected or routed. • Butyl tape not covering the sensor bracket completely. • Butyl tape missing completely.
Cause	<p>If the side blind zone has been found not working properly, inspect one or more of the following areas:</p> <ul style="list-style-type: none"> • Butyl tape application at the sensor brackets. • Sensor harness electrical connection and routing. • Poor grounding at the G401 and/or G404 body ground.
Correction 1	<div style="text-align: center;">  </div> <p style="text-align: right; font-size: small;">4749843</p> <p>Inspect the wiring harness electrical connectors for proper connections and routing.</p>

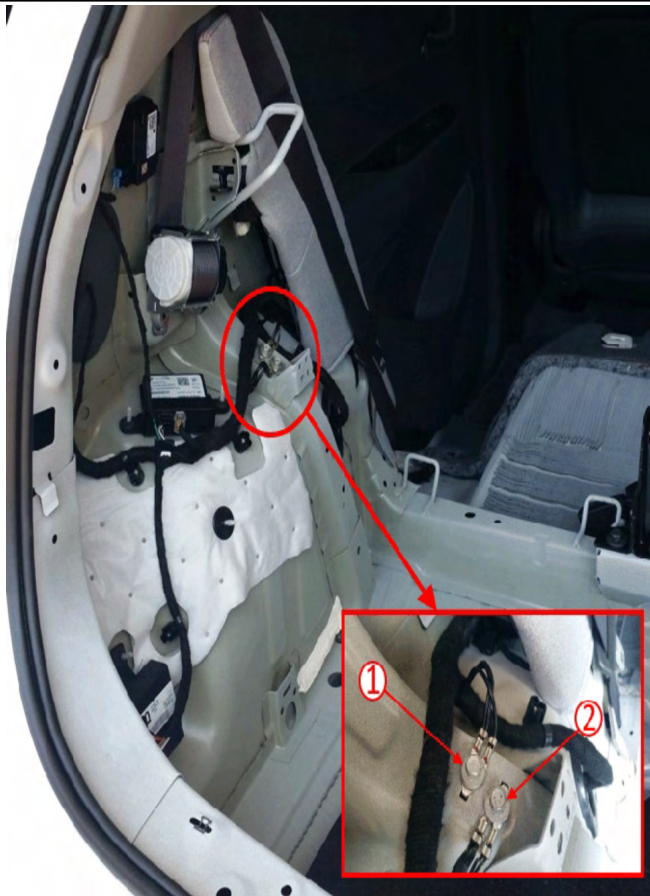
Correction 2



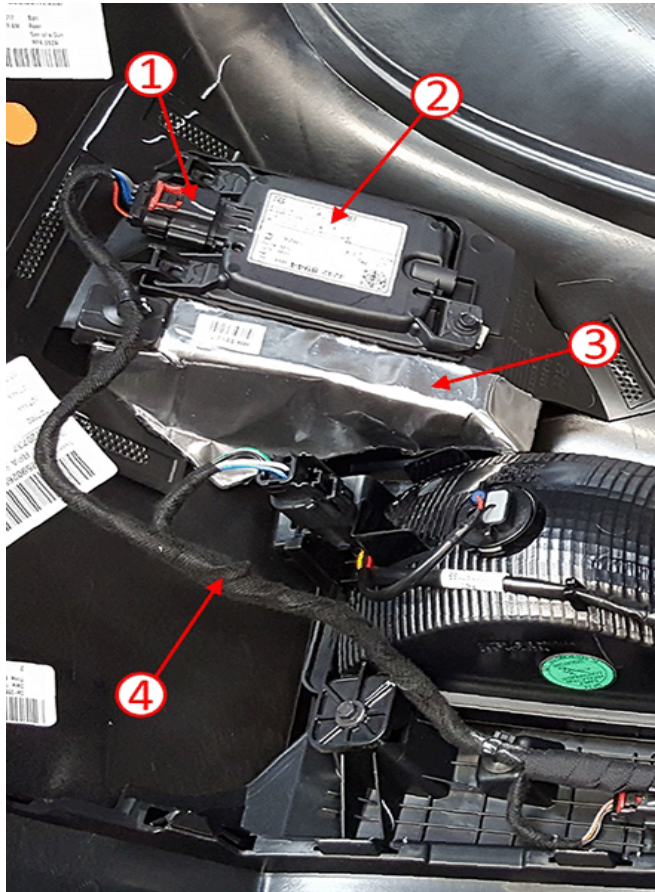
4749759

Important: The opening must be completely covered with the butyl tape to avoid allowing unwanted radar reflection to be detected and triggering the false alerts. Install a new single piece of aluminum butyl tape on the bottom of the object sensing alert module brackets so the opening is completely covered by the tape.

Correction 3



Service Procedure



4847179

1. Raise the vehicle to its full height. Refer to *Lifting and Jacking the Vehicle* in SI.
2. Inspect the side blind zone sensors (2) electrical connector (1) for proper connection and routing of the wiring harness (4).
3. Using Acrysol or equivalent, clean the bottom of the module and allow to dry.
4. Peel the backing off of the aluminum butyl tape (3) and apply to the bottom of the module.
5. Lower the vehicle.
 - If the side blind zone and/or side mirror indicators are performing properly, no further work is required.

- If the side blind zone and/or side mirror indicators are not performing properly, continue with procedure.
6. Remove the quarter lower rear trim panel. Refer to *Quarter Lower Rear Trim Panel Replacement* in SI.
 7. Remove the G401 and G404 electrical connector.
 8. Inspect and remove any paint from the ground contact points.
 9. Torque the bolts to specifications. Refer to *Fastener Specifications* in SI.
 10. Install the quarter lower rear trim panel.
 11. Update the side object sensor module using the Service Programming System (SPS) with the latest calibrations available on TIS2WEB. Refer to *Side Object Sensor Programming and Setup* in SI.

If the side blind zone and/or side mirror indicators are not performing properly, refer to SI for further diagnostics.

Parts Information

Description	Part Number	Qty
TAPE-RR BPR FASCIA EXTN	42563361 (LH)	1
	42563362 (RH)	

Warranty Information

For vehicles repaired under the Bumper-to-Bumper coverage (Canada Base Warranty coverage), use the following labor operation. Reference the Applicable Warranties section of Investigate Vehicle History (IVH) for coverage information.

Labor Operation	Description	Labor Time
6480398*	Inspect Sensor Electrical Connections and Apply Butyl Tape to Both Object Sensing Modules	0.4 hr
Add	Inspection and Cleaning of G401 and G404 Ground Contact Points	0.8 hr
Add	Side Object Sensor Reprogramming with SPS	0.3 hr

*This is a unique Labor Operation for bulletin use only.

Version	5
Modified	August 16, 2017 – Added Vauxhall to models and wiring electrical connectors and ground information. November 14, 2017 – Added Side Object Sensor Module Programming and Setup information. August 10, 2018 – Added the 2018 and 2019 Model Years. October 16, 2020 – Added 2020 Model Year to Bolt EV.

GM bulletins are intended for use by professional technicians, NOT a "do-it-yourselfer". They are written to inform these technicians of conditions that may occur on some vehicles, or to provide information that could assist in the proper service of a vehicle. Properly trained technicians have the equipment, tools, safety instructions, and know-how to do a job properly and safely. If a condition is described, DO NOT assume that the bulletin applies to your vehicle, or that your vehicle will have that condition. See your GM dealer for information on whether your vehicle may benefit from the information.



WE SUPPORT VOLUNTARY
TECHNICIAN
CERTIFICATION