

Technical product information

Topic	Rear tail lamp flashes - After opening an exterior door - With the vehicle unlocked
Market area	Bentley: worldwide (2WBE)
Brand	Bentley
Transaction No.	2060895/1
Level	EH
Status	Approval
Release date	

New customer code

Object of complaint	Complaint type	Position
lighting system, signalling -> exterior illumination -> tail light cluster	component / consumables -> flickering	
lighting system, signalling -> exterior illumination	functionality	
lighting system, signalling -> operation, control, light control	functionality	

Vehicle data

Bentayga

Sales types

Type	MY	Brand	Designation	Engine code	Gearbox code	Final drive code
4V1*	2021	E		*	*	*

Documents

Document name
master.xml

Customer statement / workshop findings

When a door is opened with the vehicle unlocked, the boot lamps flash once (Figure 1)



Figure 1

Figure 2 shows the correct operation (No flash)



Figure 2

Technical background

Should the car go into bus silence with the car unlocked, on door opening, there is a <math><100\text{ms}</math> flash of the rear lamps.

Due to BCM2 supplying power to the rear lamp immediately, there is a delay in establishing communication, which causes the tailgate lamp to activate for <math><100\text{ms}</math>.

A software fix for this issue adds a 1 second delay upon power being supplied to the lamp

Production change

-

Measure

1. Select and run Guided fault finding

- Within the Special functions tab select 'SVM - Code Input' then select Perform test (Figure 3)



Figure 3

2. On the next screen enter the SVM code 4V0RLIGHTS01 and select Adopt (Figure 4)

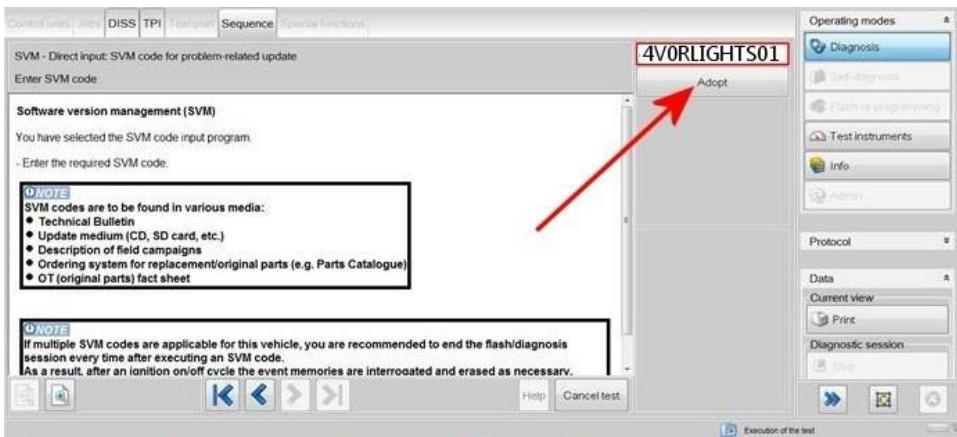


Figure 4

3. On the following screen, confirm the code is correct - Select - Yes.

4. All control modules will be interrogated - Follow all on screen prompts.

5. The software update for address 070E will then begin (Figure 5)

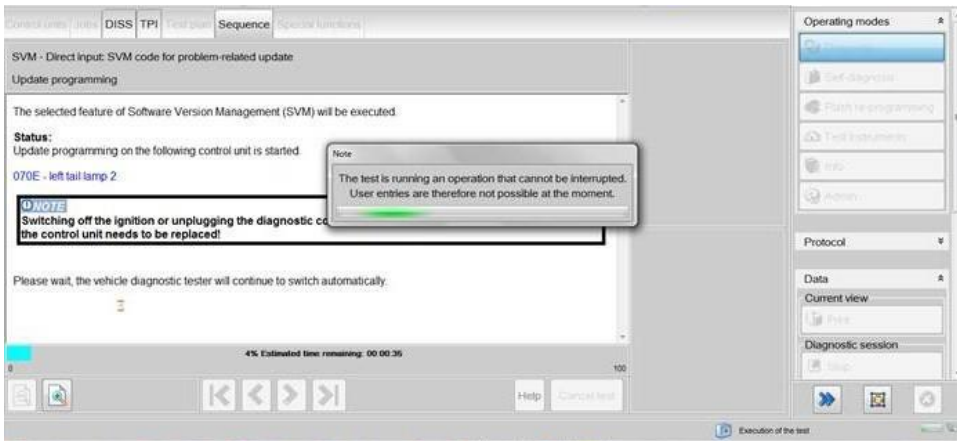


Figure 5

6. Follow all on screen prompts until the update to the left hand lamp control unit - 070E is complete

IMPORTANT NOTE: The update of the right hand tail lamp control unit - 0710 (Figure 6) will automatically begin

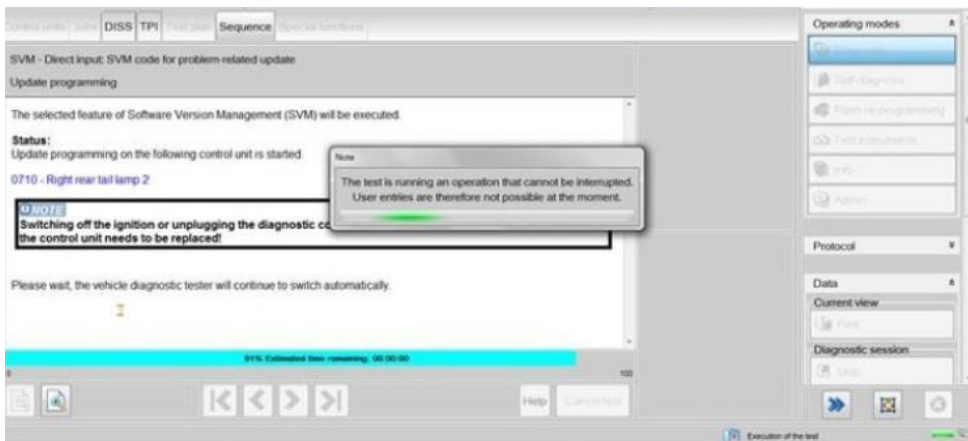


Figure 6

- Follow all on screen prompts until the update of the right hand tail lamp control unit -0710 is complete

7. Conduct a full ignition cycle(Off/On)

8. After the update programming, gear selection may not be possible. To wake up the system a bus silence is required, carry out the following steps in the order stated below:

- Switch off the ignition
- Remove the diagnostic interface from the OBD port
- Switch off and remove the battery charger from the vehicle
- Close the bonnet and all doors then lock the vehicle
- Wait 5 minutes to allow the vehicle to go into bus silence
- When 5 minutes has elapsed, unlock the vehicle and open the driver's door
- Switch on the ignition
- Confirm gear selection is possible

Warranty accounting instructions

Warranty type 110 or 910

Damage service number 94 31

Damage code 00 55

Labour

Labour operation code 01 51 00 00

Time As per the ODIs log (Must not exceed 30 time units)