

Spare Parts Requirements for Wheel Carrier/Transverse Control Arm on Front Axle - Check Component Pairing, a Mixed Installation is Not Permitted (158/20)

Vehicle Type: **911 Turbo S (992) / 911 Turbo S Cabriolet (992)**

Model Year: **As of 2020 up to 2021**

Subject: **Spare parts requirements for wheel carrier or transverse control arm**

Information: **If the wheel carrier or transverse control arm needs replacing, the parts installed in the vehicle must be checked beforehand due to a change to the wheel carrier design during production. Parts can be replaced individually or may all have to be replaced on each axle, depending on whether a new wheel carrier or a new transverse control arm is required.**

Remedial Action: Check the transverse control arm connection on the wheel carrier. Depending of the result of the check, carry out the following repair measure as described in the section ⇒ *Technical Information 'Checking the transverse control arm on the wheel carrier threaded joint'*.

Affected part numbers

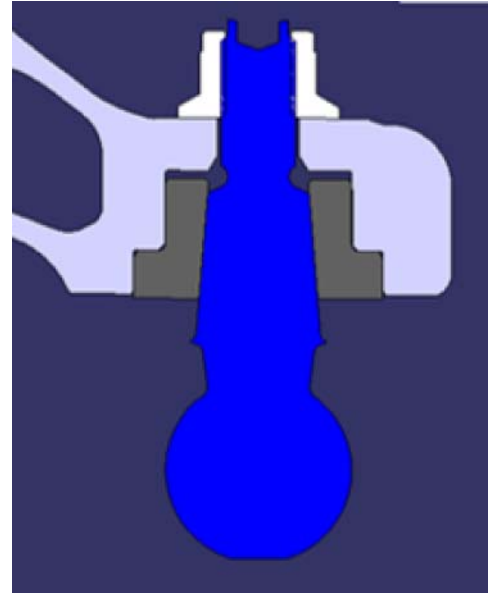
Parts Info:

Part number (old)	Part number (new)	Designation
992407245BY	992407245CY	Left pivot bearing (wheel carrier)
992407246BY	992407246CY	Right pivot bearing (wheel carrier)
992407151E	992407151F	Wishbone
PAF908088 (M12)	WHT006151 (M14)	Hexagon collar nut, self-locking

Checking the transverse control arm connection on the wheel carrier

Work

Procedure: Existing vehicles have an M12 threaded joint that connects the transverse control arm to the wheel carrier
⇒ *Threaded joint between transverse control arm and wheel carrier on existing vehicles.*



Threaded joint between transverse control arm and wheel carrier on existing vehicles

New vehicles have an M14 threaded joint that connects the transverse control arm to the wheel carrier as well as a pressed bush ⇒ *Threaded joint between transverse control arm and wheel carrier on new vehicles.*



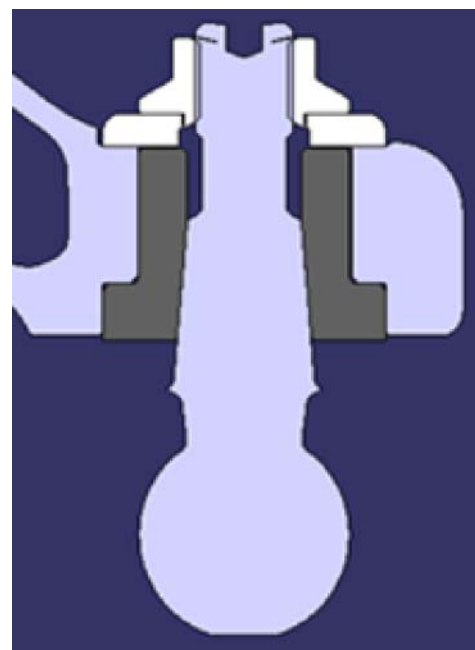
Information

Due to the nature of the assembly, a mixed installation of the old transverse control arm and a new wheel carrier is not permitted. Due to its design, the M12 threaded joint does not have the required contact surface on the new wheel carrier. If a mixture of old and new components are installed, there is no guarantee that the forces occurring will not damage the wheel carrier.

1 Raise the vehicle, see ⇒ *Workshop Manual '4X00IN Lifting the vehicle'.*

2 Check the transverse control arm connection on the wheel carrier.

- If it has an **M12** threaded joint and **only** a transverse control arm is required, this can be ordered and replaced in the normal way. Order the old transverse control arm and then replace the existing control arm, see ⇒ *Technical Information '4X00IN Replacing the transverse control arm only (M12 threaded joint)'.*
- If it has an **M12** threaded joint and a new wheel carrier is required, new wheel carriers with new transverse control arms must be installed to the front axle. Order new wheel carriers with new transverse control arms and replace the existing wheel carriers, see ⇒ *Technical Information '4X00IN Replacing wheel carriers and transverse control arms (complete front axle)'.*
- If it has an **M14** threaded joint, the wheel carriers and transverse control arms can be replaced individually. Order the required parts and replace the faulty component, see ⇒ *Technical Information '4X00IN Replacing wheel carriers or transverse control arms (M14 threaded joint)'.*



Threaded joint between transverse control arm and wheel carrier on new vehicles

Replacing the transverse control arm only (M12 threaded joint)

Parts Info:

Parts required

Part No.	Designation – Use	Qty.
992407151E	⇒ Transverse control arm – Front axle	1 ea.
PAF908088	⇒ Hexagon collar nut, self-locking – Front axle	1 ea.

9A700837900	⇒ Tie-wrap – Front axle	2 ea.
9A700820900	⇒ Hexagon-head bolt – Transverse control arm	1 ea.
PAF909664	⇒ Hexagon collar nut, self-locking – Transverse control arm	1 ea.

- Work Procedure: 1 Replace the transverse control arm, see ⇒ *Workshop Manual '401719 Removing and installing lower trailing arm'*.
- 2 Perform suspension alignment and make adjustments, see ⇒ *Workshop Manual '449503 Performing suspension alignment at front and rear'*.

Replacing wheel carriers and transverse control arms (complete front axle)

Parts Info: Parts required

Part No.	Designation – Use	Qty.
992407245CY	⇒ Left pivot bearing (wheel carrier) – Front axle	1 ea.
992407246CY	⇒ Right pivot bearing (wheel carrier) – Front axle	1 ea.
992407151F	⇒ Transverse control arm – Front axle	2 ea.
Additional parts required		
WHT006151	⇒ Hexagon collar nut, self-locking – Transverse control arm	2 ea.
9A700820900	⇒ Hexagon-head bolt – Transverse control arm	2 ea.
PAF909664	⇒ Hexagon collar nut, self-locking – Transverse control arm – Connecting link for anti-roll bar – Spring strut to wheel carrier	6 ea.
9A700758500	⇒ Cheese head bolt M12x1.5x85 – Brake calliper	4 ea.
9A700837900	⇒ Tie-wrap – Longitudinal arm	4 ea.
PAF008742	⇒ Hexagon-head bolt – Spring strut to wheel carrier	2 ea.

WHT007021	⇒ Hexagon nut, self-locking with washer – Drive shaft	2 ea.
PAF908088	⇒ Hexagon collar nut, self-locking – Tie rod	2 ea.
PAF100829	⇒ Hexagon-head bolt (combination) – Cover plate	6 ea.
9P1407621	⇒ Angular-contact ball bearing – Wheel carrier	
Only for vehicles with PDCC		
PAF008758	⇒ Hexagon flange bolt – PDCC damper adapter	4 ea.

- Work Procedure: 1 Replace the lower trailing arm, see ⇒ *Workshop Manual '401719 Removing and installing lower trailing arm'*.
- 2 Replace the wheel carrier, see ⇒ *Workshop Manual '405019 Removing and installing wheel bearing housing'* and ⇒ *Workshop Manual '405755 Replacing front wheel bearing'*.
- 3 Perform suspension alignment and make adjustments, see ⇒ *Workshop Manual '449503 Performing suspension alignment at front and rear'*.

Replacing wheel carriers or transverse control arms (M14 threaded joint)

Parts Info: **Part numbers for wheel carriers or transverse control arms with M14 threaded joint**

Part No.	Designation – Use	Qty.
992407245CY	⇒ Left pivot bearing (wheel carrier) – Front axle	1 ea.
992407246CY	⇒ Right pivot bearing (wheel carrier) – Front axle	1 ea.
992407151F	⇒ Transverse control arm – Front axle	1 ea.

- Work Procedure: 1 Replace the transverse control arm, see ⇒ *Workshop Manual '401719 Removing and installing lower trailing arm'*.

or

- 1 Replace the wheel carrier, see ⇒ *Workshop Manual '405019 Removing and installing wheel bearing housing'* and ⇒ *Workshop Manual '405755 Replacing front wheel bearing'*.
- 2 Perform suspension alignment and make adjustments, see ⇒ *Workshop Manual '449503 Performing suspension alignment at front and rear'*.

Invoicing

Invoicing: For documentation and warranty invoicing, enter the labor operations specified below in the warranty claim, PQIS coding and part numbers, depending on the relevant repair:

APOS	Labour operation	I No.
44051911	Removing and installing wheel	
44051912	Removing and installing wheel	
44052011	Removing and installing 2 wheels	
40171951	Removing and installing lower trailing arm	
40171952	Removing and installing lower trailing arm	
40172050	Removing and installing 2 lower trailing arms	
40501955	Removing and installing wheel bearing housing	
40501956	Removing and installing wheel bearing housing	
40575555	Replacing front wheel bearing	
40575556	Replacing front wheel bearing	
40575655	Replacing 2 front wheel bearings	
44950300	Performing front/rear suspension alignment	
44951550	Adjusting vehicle at front/rear	

PQIS coding:

Location (FES5)	40500	Wheel bearing housing
Damage type (SA4)	9735	Repair in accordance with PAG instructions

Parts: **Conversion of front axle to M14 threaded joint.**

Part No.	Designation - Use	Qty.
992407245CY	Left pivot bearing (wheel carrier) - Front axle	1 ea.
992407246CY	Right pivot bearing (wheel carrier) - Front axle	1 ea.
992407151F	Transverse control arm - Front axle	2 ea.

Additional parts required

WHT006151	Hexagon collar nut, self-locking – Transverse control arm	2 ea.
9A700820900	Hexagon-head bolt – Transverse control arm	2 ea.
PAF909664	Hexagon collar nut, self-locking – Transverse control arm – Connecting link for anti-roll bar – Spring strut to wheel carrier	6 ea.
9A700758500	Cheese head bolt M12x1.5x85 – Brake calliper	4 ea.
9A700837900	Tie-wrap – Longitudinal arm	4 ea.
PAF008742	Hexagon-head bolt – Spring strut to wheel carrier	2 ea.
WHT007021	Hexagon nut, self-locking with washer – Drive shaft	2 ea.
PAF908088	Hexagon collar nut, self-locking – Tie rod	2 ea.
PAF100829	Hexagon-head bolt (combination) – Cover plate	6 ea.
9P1407621	Angular-contact ball bearing – Wheel carrier	
Only for vehicles with PDCC		
PAF008758	Hexagon flange bolt – PDCC damper adapter	4 ea.

Only for transverse control arms with M12 threaded joint on the vehicle.

Part No.	Designation – Use	Qty.
992407151E	Transverse control arm – Front axle	1 ea.
PAF908088	Hexagon collar nut, self-locking – Front axle	1 ea.
9A700837900	Tie-wrap – Front axle	2 ea.

- References:
- ⇒ *Workshop Manual '4X00IN Lifting the vehicle '*
 - ⇒ *Workshop Manual '401719 Removing and reinstalling lower trailing arm'*
 - ⇒ *Workshop Manual '405019 Removing and installing wheel bearing housing'*
 - ⇒ *Workshop Manual '405755 Replacing front wheel bearing'*
 - ⇒ *Workshop Manual '449503 Performing front and rear suspension alignment'*

Important Notice: Technical Bulletins issued by Porsche Cars North America, Inc. are intended only for use by professional automotive technicians who have attended Porsche service training courses. They are written to inform those technicians of conditions that may occur on some Porsche vehicles, or to provide information that could assist in the proper servicing of a vehicle. Porsche special tools may be necessary in order to perform certain operations identified in these bulletins. Use of tools and procedures other than those Porsche recommends in these bulletins may be detrimental to the safe operation of your vehicle, and may endanger the people working on it. Properly trained Porsche technicians have the equipment, tools, safety instructions, and know-how to do the job properly and safely. Part numbers listed in these bulletins are for reference only. The work procedures updated electronically in the Porsche PIWIS diagnostic and testing device take precedence and, in the event of a discrepancy, the work procedures in the PIWIS Tester are the ones that must be followed.

© 2020 Porsche Cars North America, Inc.