

REFERENCE:	Nova Bus Manuals
SECTION:	03: Windows
RS N°:	MQR 7621-2064
EFFECTIVE IN PROD.:	N/A

APPLICATION DEADLINE: N/A

SUBJECT:	Water Intrusion in IB Compartment.
JUSTIFICATION:	Water Intrusion in Rear Interior Electrical Compartment. From the exterior of the bus, it appears there is a gap between seal and the bus body.

LEVEL	DESCRIPTION	DIRECT CHARGES		TIME
		LABOUR	MATERIAL	
1	Applying of Sealant on the rear exterior window	Client	Client	30 mins
2	-	-	-	-

MATERIAL

QTY	PART N°	REV.	DESCRIPTION	REPLACES PART N°
LEVEL 1				
-	-	-	-	-
LEVEL 2				
-	-	-	-	-
SHOP SUPPLY				
200ml	N32989	-	SEALANT BUTYL 757	-
0.025 oz	9985337	-	ADHESIVE CYANOACRYLATE	-
0.5 Kg	N32591	-	VANISHING OIL	-

Note:**9985337 (ADHESIVE CYANOACRYLATE)**

1 ea = 0.10 Oz
0.025 Oz Per Bus
0.575 Oz for 23 buses
5.75 ~ 6 Oz for the entire Campaign

N32591 (VANISHING OIL)

1 ea = 2.5 Kg
0.5 Kg Per Bus
11.5 Kg for 23 buses
4.6 ~ 5 Kg for the entire Campaign

Materials will be available within 36 days. To order, please contact Prevost Parts by phone at 1-800-771-6682, by fax at 1-888-668-2555 or by email at prevostparts.commandes@volvo.com. Specify document number, quantity of parts required and shipping address..

DISPOSAL OF PARTS

REMOVED PARTS ARE:	DISCARDED*	RETAINED	* Dispose of the unused parts and the defective parts in accordance with local environmental standards in effect.
	-	-	

REVISION HISTORY

REV.	DATE	CHANGE DESCRIPTION	WRITTEN BY
NR	2020AU13	Initial release	Devanand
R1	2020DE04	Instruction 1.5 has been updated.	Devanand

APPROVED BY:

PAGE 1 OF 7

CLIENT	ORDER	ROAD NUMBER		VIN (2NVY/4RKY...)		QTY
		FROM	TO	FROM	TO	
Capital Area Transportation Authority Michigan - CATA	LC07	6012	6015	S92J5K9777269	S92J5K9777272	4
Capital Area Transportation Authority Michigan - CATA	LC08	700	718	L82J7K9777278	L82J8K9777306	19

**WARNING**

Follow your internal safety procedures.

PROCEDURE

- 1.1. Park the vehicle on an even surface with transmission in neutral (N).
- 1.2. Turn the ignition switch to OFF position and engage the parking brake.
- 1.3. Set the master control switch in the STOP position (see figure 1).

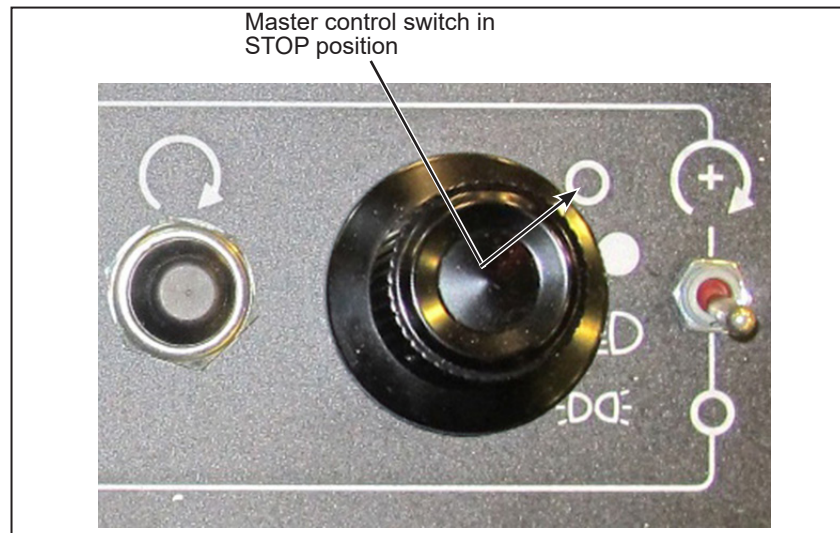


Figure 1 - Master Control Switch in STOP Position

- 1.4. Set the battery disconnect switch in the battery compartment to the OFF position (see figure 2).

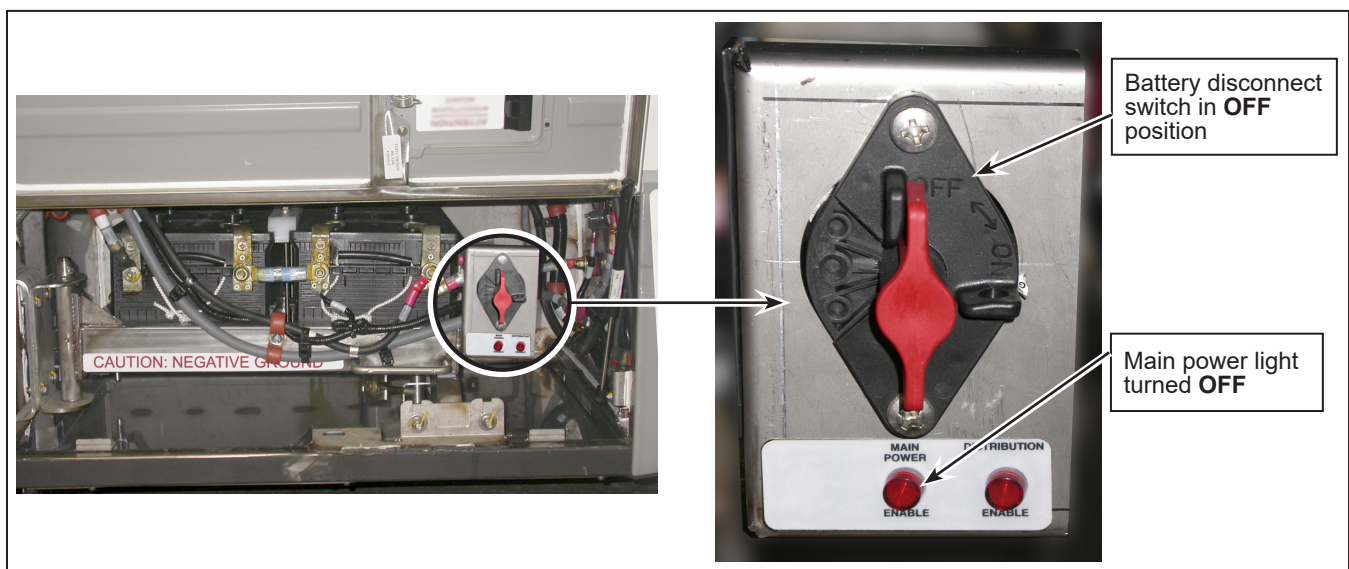


Figure 2 - View of Battery Disconnect Switch

TOOLS REQUIRED:

Flexible-tab glass insertion tool

Lock insertion tool

Metal tips toll to apply Butyl

- 1.5. Clear the zone around rear window (see figure 3); Check if there is any residue (sand and salt) between the glass/Rear shell and the gasket (Use the flexible-tab glass insertion tool like figure 6) (see figure 4). Clean with soapy water and dry well with a clean cloth. If necessary, clean also around the gasket inside of the bus.

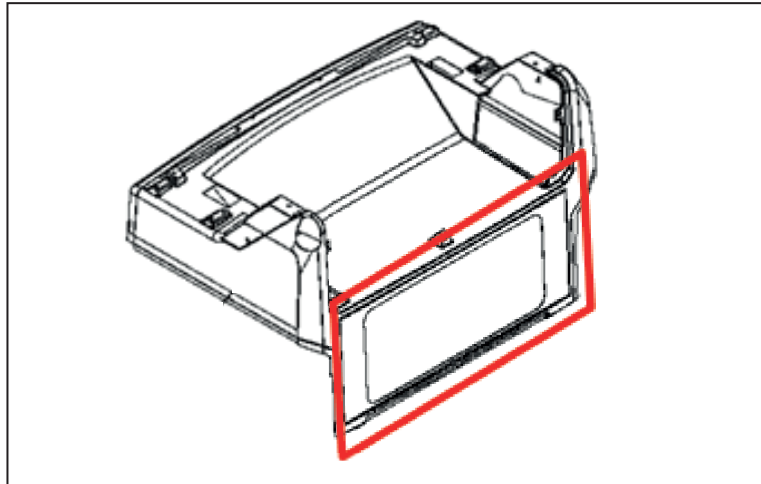


Figure 3 - Rear Window Cleaning

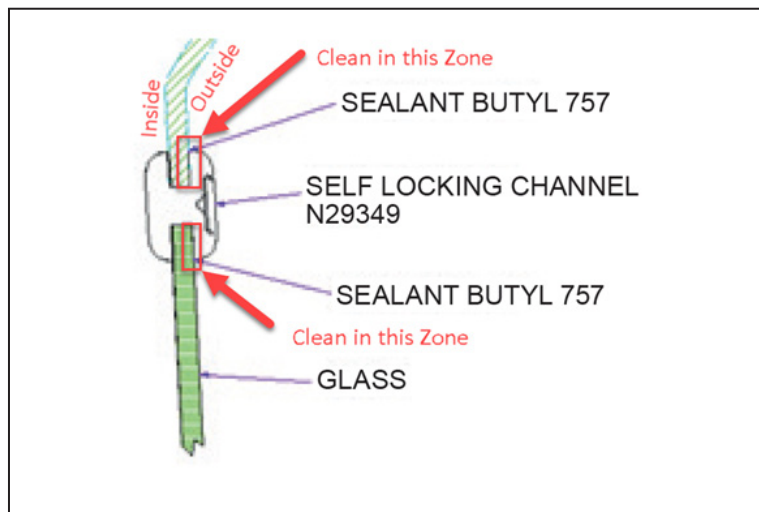


Figure 4 - Cleaning around the window

**CAUTION**

Be careful not to cut the extrusion when performing this task, otherwise the extrusion will require replacing.

- 1.6. When the area is dry, unlock for the rubber extrusion with a lock insertion tool (see figure 5).

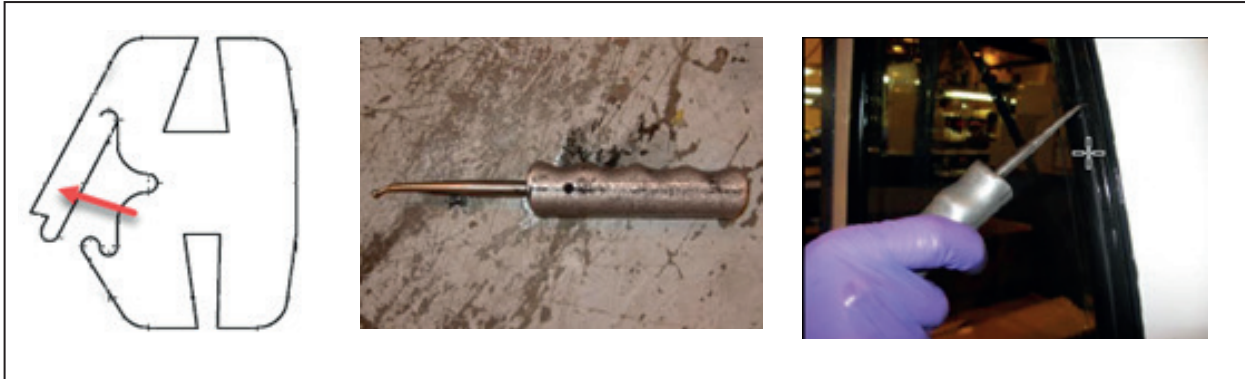


Figure 5 - Unlocking the Rubber Extrusion

- 1.7. Use the flexible-tab glass insertion tool with the rubber extrusions (see figure 6).
- 1.8. To ease the insertion, spray vanishing oil over the entire extrusion and use the flexible-tab glass insertion tool.
- 1.9. Remove excess lubricant between the rubber extrusion and the glass using a clean absorbent cloth and verify that contact surface between rubber extrusions and the glass is clean. Do the same between rubber extrusions and the rear shell.



Figure 6 - Flexible Tab Glass Insertion Tool

- 1.10. Apply Butyl 757 sealant between the rubber extrusion and its contact surface until it overflows slightly (see figure 7).
- 1.11. Apply Butyl on both sides of the rubber extrusion for side windows and one side for rear shell (only on the exterior side of the bus). Do not leave any space without Butyl 757.

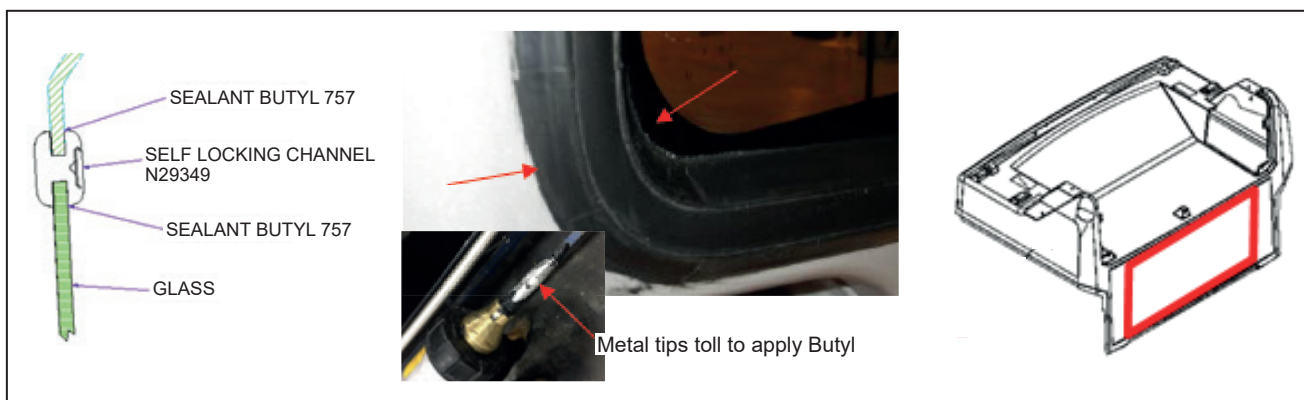


Figure 7 - Applying Sealant

**NOTE**

When the tool (with the rigid tips) is not available, it is possible to apply the butyl with 2 people. The first one lift the rubber and the second apply the butyl.

- 1.12. Insert the lock for the rubber extrusion of the quarter windows using a lock insertion tool (see figure 8).



Figure 8 - Inserting the Lock

- 1.13. Clean the glass, remove excess sealant on windows, fiberglass and gel coat with a soft cloth and a plastic spatula. A cloth soaked in vanishing oil can be used to clean up excess butyl.
- 1.14. If required, Seal the joint between the two ends of the insertion tab using cyanoacrylate adhesive (see figure 9).



Figure 9 - Usage of Cyanoacrylate Adhesive

- 1.15. Place the master control switch in ON position.
- 1.16. Set the battery disconnet switch in the battery compartment to the ON position.
- 1.17. The vehicle may be returned to service.❖

Annexe : Example for the QTY of Butyl (Step 1.10)

