



SLINGSHOT

SERVICE ADVISORY

Release Date: December 17, 2020

Expiration Date: December 17, 2021

SLI

Communication #: TSA-20-01

Model Year(s): 2020

— Confidential and Proprietary —

VERSION: R02 (December 18, 2020)

****Updated Digital Wrench version and added Engine Idle Learn Procedure****

IMPORTANT

If you are working with a printed copy, please verify you have the most current version of this document.

SUBJECT: 2020 AUTODRIVE CALIBRATION ENHANCEMENTS

PURPOSE

Slingshot has released updated Engine Control Module (ECM) and Transmission Control Module (TCM) calibrations to provide smoother transmission shifts, improved vehicle behavior when coming to a stop, and improved low speed drivability.

NOTICE

The TCM update is also installed during an ECM calibration update or installation of an accessory programming such as the Stage 1 ProStar 2.0L tune, add-on paddle shifters, or hill hold feature. Vehicles already equipped with a Stage 1 calibration will receive the TCM update and the most current stage 1 calibration at the time of the update.

AFFECTED MODELS

MODEL YEAR	MODELS	VEHICLE IDENTIFICATION NUMBER RANGE
2020	Slingshot R with AutoDrive	Reference Unit Inquiry on the dealer website or the Service Communications list on the STOP site to lookup affected VINs.
	Slingshot SL with AutoDrive	
	Slingshot GT with AutoDrive	

NOTICE

Slingshot models equipped with Manual Transmissions are not affected.

The information contained within this document is confidential and protected by U.S. and international copyright laws, and is the property of Polaris Inc. This document is provided for the sole use of authorized Polaris dealers and distributors. This document is not to be distributed, duplicated, or copied, digitally or otherwise, without the written consent of Polaris Inc.

WARRANTY CLAIM PARTS INFORMATION

2020 SLINGSHOT	
Advisory #	TSA-20-01
Claim Type	SA (Service Advisory)
Labor Allowance	0.5 hours (30 minutes)
Part Number / Description	0000541 (QTY 1) Bulletin Misc Labor
Parts Availability	NA
University of Polaris Video Training Required	NO

COVERAGE PERIOD

Coverage will begin on December 17, 2020. Coverage will expire on December 31, 2021.

FEEDBACK FORM

A feedback form has been created for the technician to provide Polaris with an overall satisfaction rating for the instructions, provide comments on your experience or upload pictures/video. This feedback form is viewable on a mobile device by scanning the QR code or by clicking [HERE](#) if viewing this document electronically.



ECU REPROGRAMMING

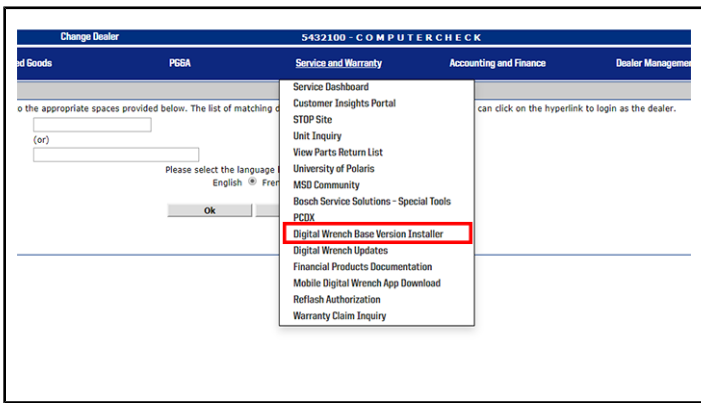
1. Verify that Digital Wrench version 4.2 Update 12/18/2020 or later has been installed on your PC or laptop and proceed to step 6.

If you do not have Version 4.2 – Update 12/18/2020 or later installed, you must first download it before proceeding with the reflash.

NOTICE

If you do not have Digital Wrench installed on your computer, you must first download the **Digital Wrench Base Version Installer (STEP 2)**.

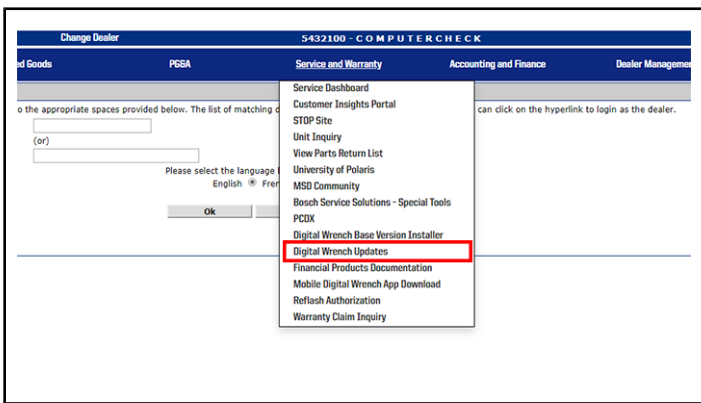
2. To download Digital Wrench Base Version, go to your dealer homepage and select **Digital Wrench Base Version Installer** from the **Service and Warranty** dropdown menu and download.



NOTICE

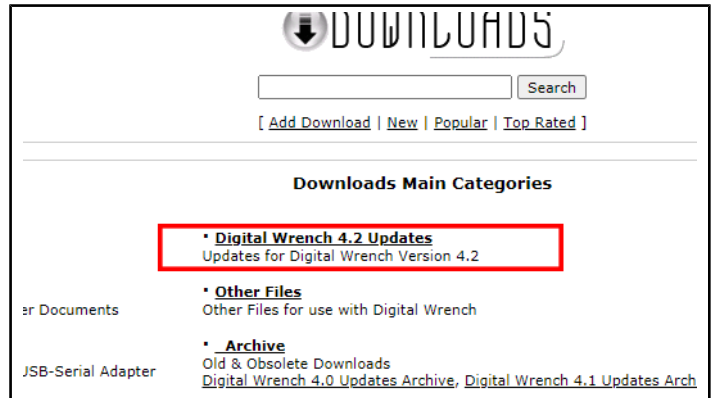
International Subsidiaries and Distributors use the **Digital Wrench Subscriptions** link to purchase and update your digital wrench software.

3. Once the Base Version is installed, go to your dealer homepage and select **Digital Wrench Updates** from the **Service and Warranty** dropdown menu.

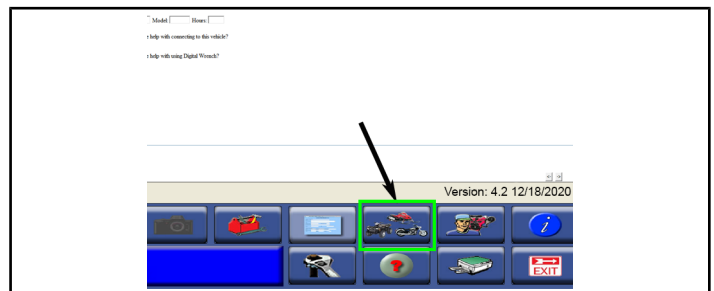


4. Click on **Digital Wrench Version 4.2 Updates**.

5. Download and install **Digital Wrench Version 4.2 – Update 12/18/2020 or higher**.



6. Connect MultiLink XP cables to PC and vehicle.
7. Open the Digital Wrench program.
8. Select the model year, product line, and vehicle description by selecting the “Change Vehicle Type” icon

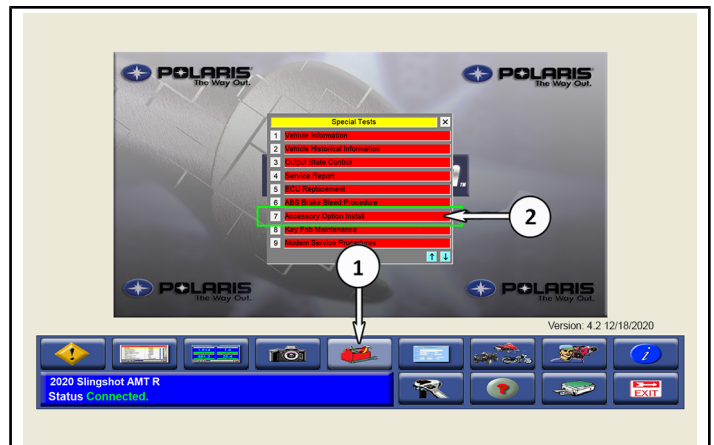


9. Power the vehicle to the “Ignition” mode by pressing the start button twice.

IMPORTANT

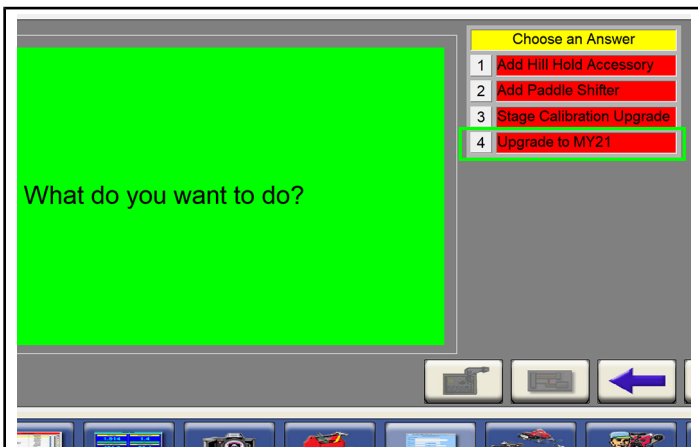
Make sure the vehicle battery is fully charged or connected to a battery charger before proceeding.

10. Select the **Special Test Tab** ①.



11. Select **Accessory Option Install** ②.

12. Select **Upgrade to MY21**.



NOTICE
Digital Wrench will automatically identify current software levels and determine which modules require software updates.

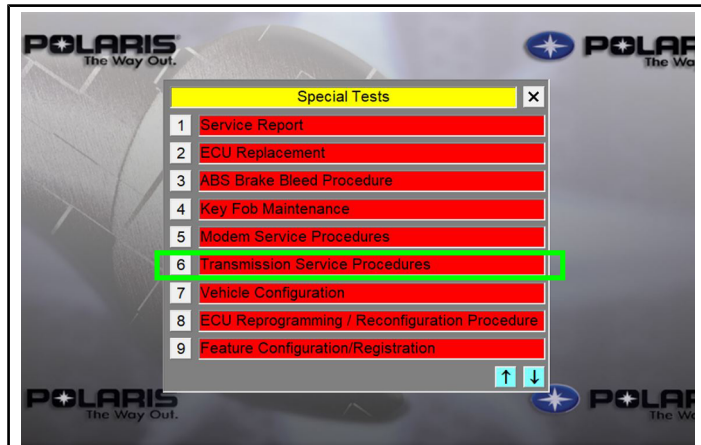
13. Follow the on-screen prompts until all control modules have been updated. Entering an Authorization Key is not necessary.

NOTICE
This will program the ECM to a no start program, then program the TCM, then program the ECM to the final version.

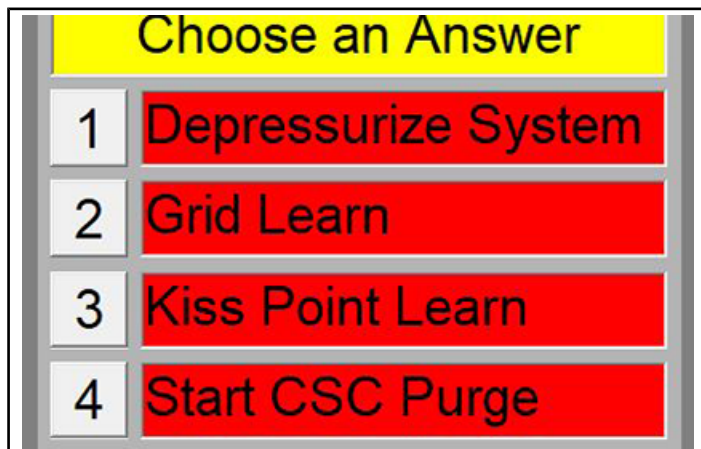
14. Once the flash is complete, click the red X.
15. Turn vehicle power off for at least 10 seconds (press start button, pull park brake).

AUTODRIVE SYSTEM BREAK-IN

1. Press the start button twice to power the vehicle to Ignition Mode.
2. Run Digital Wrench >> Special Tests "Transmission Service Procedures".



3. Select "Grid Learn", then Done.



4. Follow the on-screen prompts for Grid learn.

NOTICE
Grid learn will shift into Reverse three times to indicate it is complete

5. Turn vehicle power off for at least 10 seconds (press start button, pull park brake).
6. Press the start button twice to power the vehicle to Ignition Mode.
7. After completing the grid learn, the process will flow into the clutch "Kiss Point Learn".

NOTICE
If the "Kiss Point Learn" procedure doesn't start following the "Grid Learn", select "Kiss Point Learn" in "Transmission Service Procedures".

8. Follow the on-screen prompts to complete the Kiss Point Learn
9. Turn vehicle power off for at least 10 seconds (press start button, pull park brake)
10. Perform **IDLE RELEARN** procedure:
 - a. Start engine and run at idle until the engine reaches operating temperature of 190° F.
 - b. Slowly increase RPM to the 3000–5000 RPM range.
 - c. Return the engine to idle for 5 consecutive seconds.
 - d. Repeat engine 3000–5000 RPM range and 5 second idle TWO more times for a total of three.
 - e. Turn vehicle power off for at least 10 seconds (press start button, pull park brake).
 - f. Start engine and run at idle until the engine reaches operating temperature of 190° F.
 - g. Repeat steps B-E TWO more times, for a total of three idle relearn cycles.
11. Disconnect MultiLink XP cables from the vehicle.
12. Start the engine, and select Drive "D-Button."
13. On a flat smooth surface, slowly accelerate until the vehicle reaches 10–12 mph and then back to a complete stop.

IMPORTANT

Repeat this step six times.

14. Turn vehicle power off for at least 15 seconds (press start button, pull park brake)
15. Connect MultiLink XP cables to PC and vehicle.
16. Create a service report using Digital Wrench >> Special Tests >> Service Report.
17. Check / clear any stored fault codes, disconnect Digital Wrench and test ride the vehicle.
18. File a SA claim for TSA-20-01.