

## Technical product information

<b>Topic</b>	Rear tail lamp flashes - After opening an exterior door - With the vehicle unlocked
<b>Market area</b>	Russische Föderation (5RU),Australia E04 Bentley rest Asia and Australia (6E04),China 796 VW Import Comp. Ltd (Vico), Beijing (6796),Germany E02 Bentley rest Europe (6E02),Korea, (South) E08 Bentley South Korea (6E08),United Arab Emirates E06 Bentley Middle East and Africa (6E06),United Kingdom E01 Bentley UK (6E01),United States E05 Bentley USA and rest America (6E05)
<b>Brand</b>	Bentley
<b>Transaction No.</b>	2060895/2
<b>Level</b>	EH
<b>Status</b>	Approval
<b>Release date</b>	

### New customer code

Object of complaint	Complaint type	Position
lighting system, signalling -> exterior illumination -> tail light cluster	component / consumables -> flickering	
lighting system, signalling -> exterior illumination	functionality	
lighting system, signalling -> operation, control, light control	functionality	

## Vehicle data

### Bentayga

#### Sales types

Type	MY	Brand	Designation	Engine code	Gearbox code	Final drive code
4V1*	2021	E		*	*	*

## Documents

Document name
<a href="#">master.xml</a>

## Customer statement / workshop findings

When a door is opened with the vehicle unlocked, the boot lamps flash once (Figure 1)



Figure 1

Figure 2 shows the correct operation (No flash)



Figure 2

## Technical background

IMPORTANT NOTE: Please check and confirm if Service Campaign ( SC 20/31) is VIN applicable, In the event that ( SC 20/31) is VIN applicable the instructions within ( SC 20/31) should now be conducted and the instructions within this TPI should be ignored

However

Should (SC20/31) NOT be VIN applicable and the rear lamp flash symptom is evident please carry out the remaining instructions within this TPI

Should the car go into bus silence with the car unlocked, on door opening, there is a <100ms flash of the rear lamps.

Due to BCM2 supplying power to the rear lamp immediately, there is a delay in establishing communication, which causes the tailgate lamp to activate for <100ms.

A software fix for this issue adds a 1 second delay upon power being supplied to the lamp

## Production change

-

## Measure

1. Select and run Guided fault finding

- Within the Special functions tab select 'SVM – Code Input' then select Perform test (Figure 3)



Figure 3

2. On the next screen enter the SVM code 4V0RLIGHTS01 and select Adopt (Figure 4)

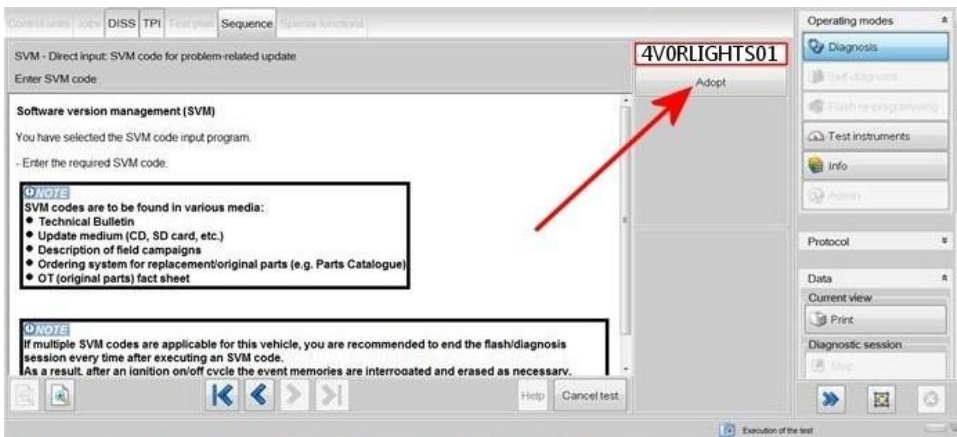


Figure 4

3. On the following screen, confirm the code is correct - Select - Yes.

4. All control modules will be interrogated - Follow all on screen prompts.

5. The software update for address 070E will then begin (Figure 5)

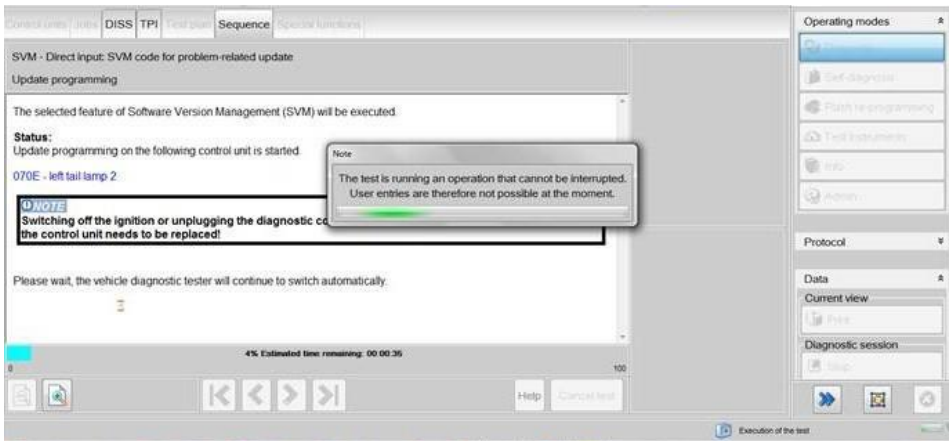


Figure 5

6. Follow all on screen prompts until the update to the left hand lamp control unit - 070E is complete

**IMPORTANT NOTE:** The update of the right hand tail lamp control unit - 0710 (Figure 6) will automatically begin

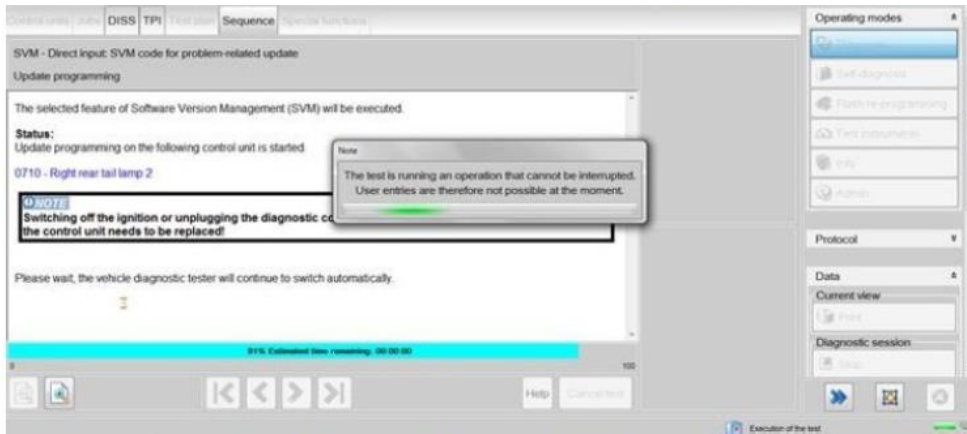


Figure 6

- Follow all on screen prompts until the update of the right hand tail lamp control unit - 0710 is complete

7. Conduct a full ignition cycle (Off/On)

8. After the update programming, gear selection may not be possible. To wake up the system a bus silence is required, carry out the following steps in the order stated below:

- Switch off the ignition
- Remove the diagnostic interface from the OBD port
- Switch off and remove the battery charger from the vehicle
- Close the bonnet and all doors then lock the vehicle
- Wait 5 minutes to allow the vehicle to go into bus silence
- When 5 minutes has elapsed, unlock the vehicle and open the driver's door
- Switch on the ignition
- Confirm gear selection is possible

### Warranty accounting instructions

Warranty type 110 or 910

Damage service number 94 31

Damage code 00 55

### Labour

Labour operation code 01 51 00 00

Time As per the ODIs log (Must not exceed 30 time units)