



# SERVICE BULLETIN

Classification: BT19-011a	Reference: NTB19-079a	Date: December 3, 2020
------------------------------	--------------------------	---------------------------

## REAR PILLAR MOLDING REPLACEMENT

This bulletin has been amended. See **AMENDMENT HISTORY** on the last page.  
Please discard previous versions of this bulletin.

**APPLIED VEHICLES:** 2016 - 2021 Maxima (A36)

### SERVICE INFORMATION

If the rear pillar molding needs to be replaced for any reason, refer to the **SERVICE PROCEDURE** starting on the next page.

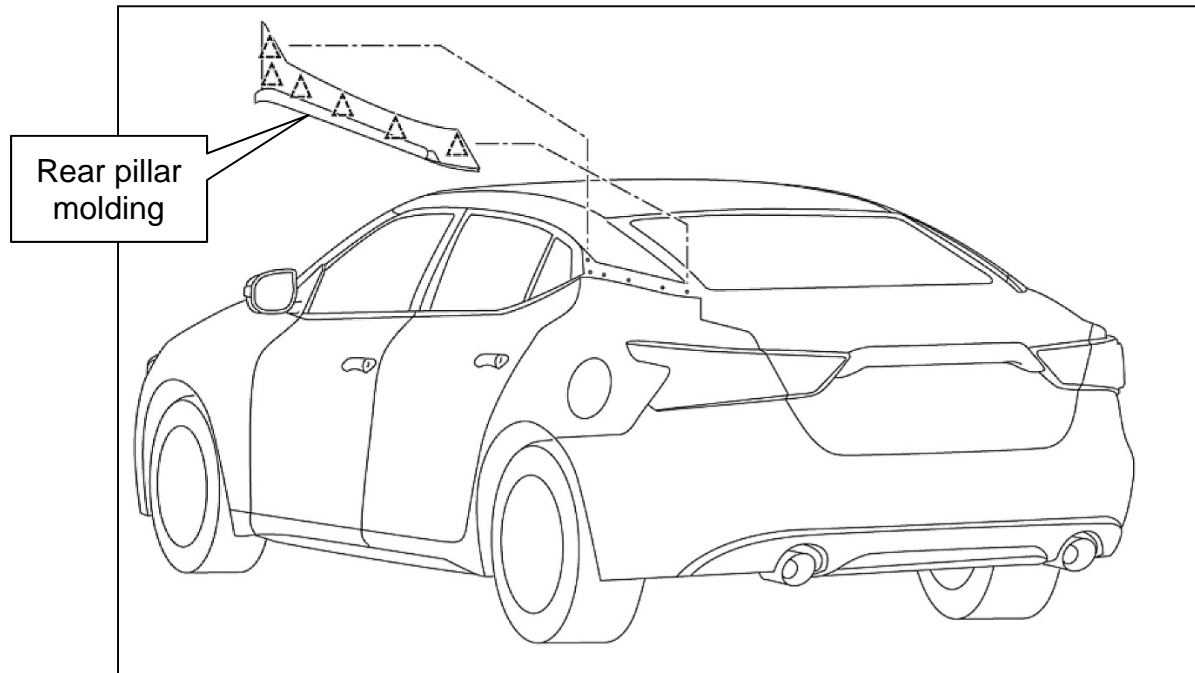


Figure 1

Nissan Bulletins are intended for use by qualified technicians, not 'do-it-yourselfers'. Qualified technicians are properly trained individuals who have the equipment, tools, safety instruction, and know-how to do a job properly and safely. **NOTE:** If you believe that a described condition may apply to a particular vehicle, DO NOT assume that it does. See your Nissan dealer to determine if this applies to your vehicle.

## SERVICE PROCEDURE

Mounting for the rear pillar molding on 2016 – 2021 Maxima vehicles now requires a 19/64<sup>th</sup> inch (7.5 mm) mounting hole for the rear clip and urethane adhesive installed in two (2) locations. **ALL** rear pillar moldings on 2016 – 2021 Maxima vehicles must now be installed using this method.

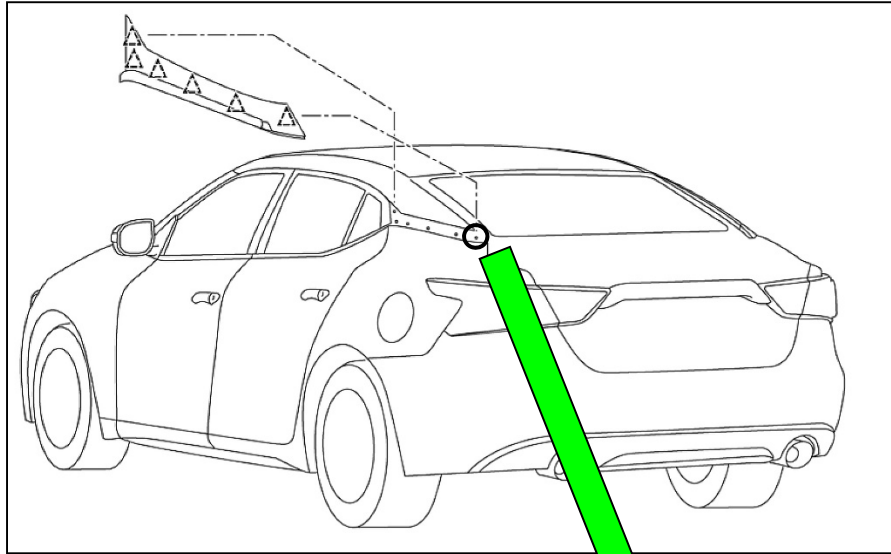


Figure 2

1. Measure the rear pillar molding's rearmost clip mounting hole diameter.

**HINT:** Use a 19/64<sup>th</sup> inch (7.5 mm) drill bit to check the mounting hole diameter.

- If a 19/64<sup>th</sup> inch (7.5 mm) drill bit **DOES** fit, skip to step 9 on page 5.
- If a 19/64<sup>th</sup> inch (7.5 mm) drill bit **DOES NOT** fit, continue to step 2 on the next page.



Figure 3

2. Apply tape to mask off the rearmost clip mounting hole area.

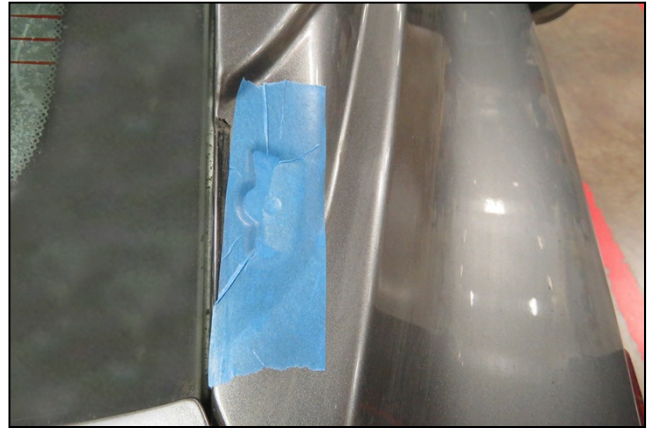


Figure 4

3. Apply masking tape to the 19/64<sup>th</sup> drill bit, leaving 1.57 inches (40 mm) exposed for reference purposes.



Figure 5

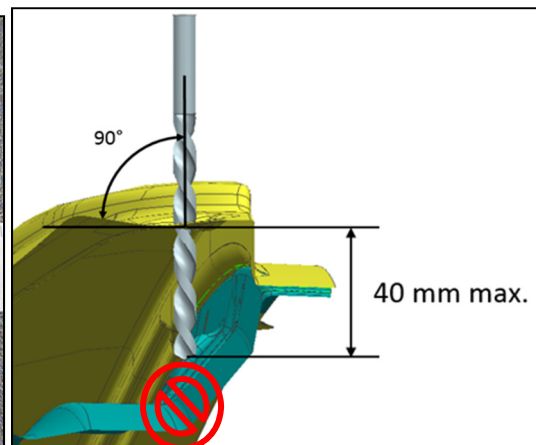


Figure 6

4. Drill a 19/64<sup>th</sup> inch (7.5 mm) hole no more than 1.57 inches (40 mm) deep.

**NOTICE**

To avoid damage to the vehicle, do not drill more than 1.57 inches (40mm) deep, otherwise the drill bit will contact internal body panels.



Figure 7

5. Clean all burrs and metal shavings from the drilled hole and surrounding area.
6. Coat the bare metal using a zinc-rich primer similar to RUST-OLEUM® Cold Galvanizing Compound shown in Figure 8.

- a. Spray a small amount of zinc-rich primer onto a cotton swab as shown in Figure 9, below.
- b. Apply the zinc-rich primer to the bare metal of the drilled hole as shown in Figure 10, below.



Figure 8



Figure 9



Figure 10

7. Allow sufficient time for the primer to dry. (Refer to the instructions supplied with the primer to ensure sufficient drying time.)
8. After the primer has dried, apply touch-up paint. (Refer to the instructions supplied with the touch-up paint to ensure sufficient drying time.)

9. Remove any existing urethane from the areas shown in Figure 11 and Figure 12, below.

**NOTICE**

To prevent rust from forming, apply touch up paint if the paint is scratched while removing the urethane.



Figure 11



Figure 12

10. Apply Betaseal™ 43533 glass primer onto the newly cleaned rear pillar finisher areas shown in Figure 14, below.

**HINT:**

Allow the Betaseal™ 43533 glass primer to dry for **AT LEAST 20** seconds or the urethane will **NOT** adhere to the rear pillar finisher.



Figure 13

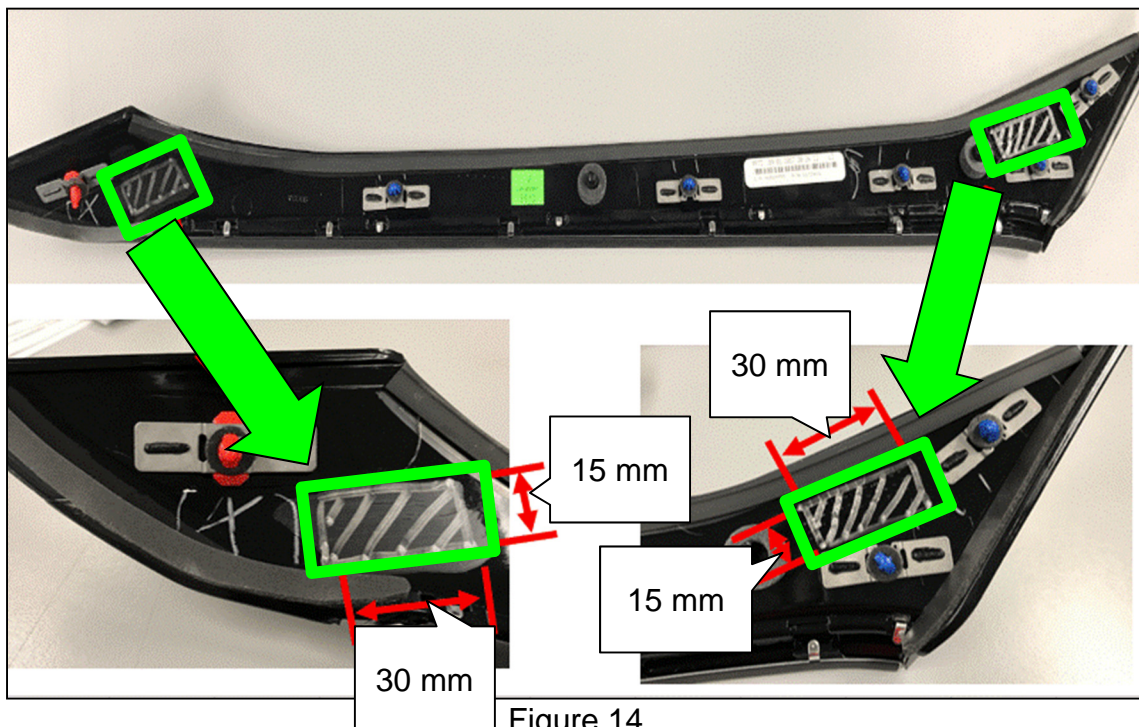


Figure 14

11. Apply Betaseal™ 57302N urethane in a **circular motion** starting from the **outside** to the **inside** of the rear pillar finisher, as indicated by the arrows in Figure 15 and Figure 16, below.

- Apply the urethane to a height of 8 mm and a width of 10 mm.

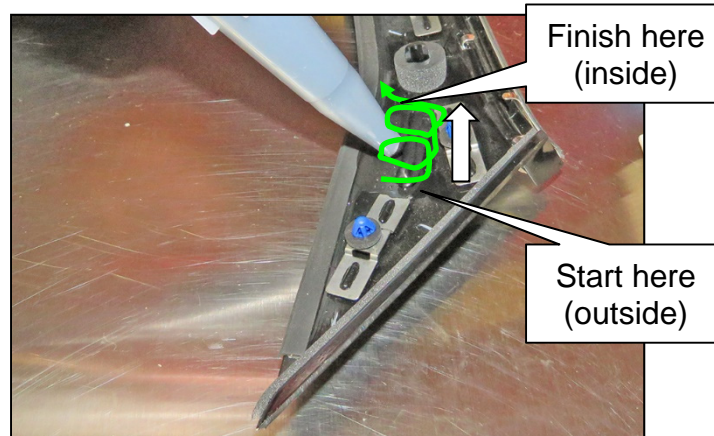


Figure 15

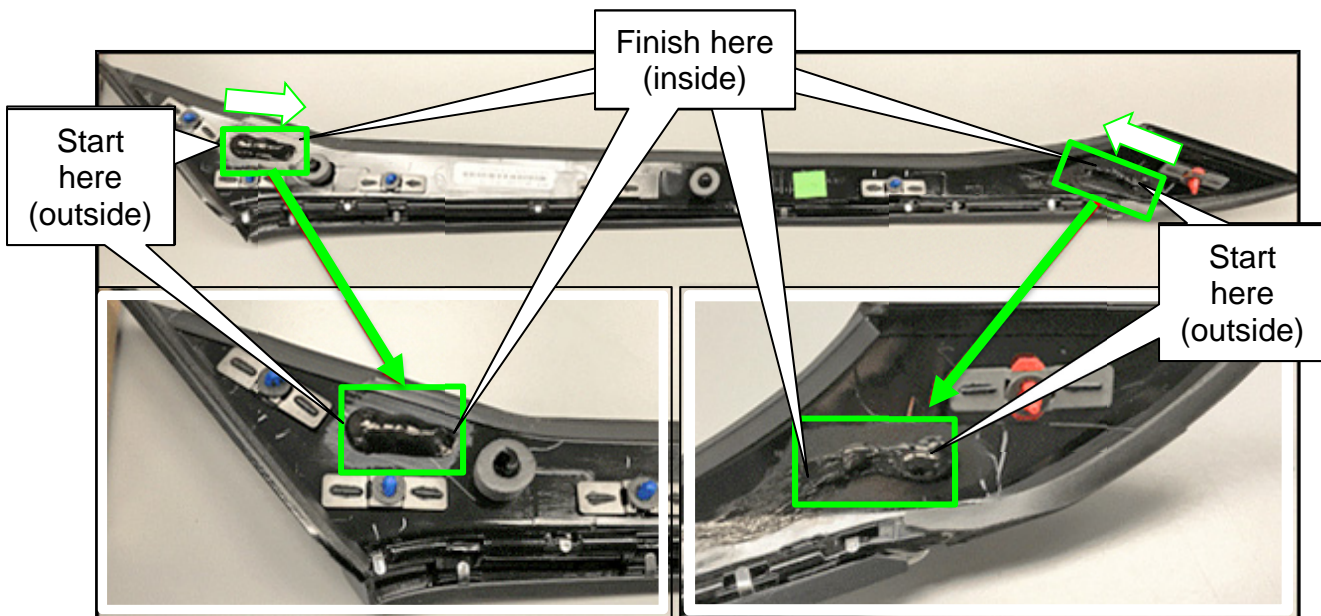


Figure 16

12. Align the rear pillar finisher with the clip mounting holes in the vehicle.
13. Push the rear pillar finisher IN toward the vehicle body until the clips are fully seated.
14. Inspect the fitment and ensure the rear pillar finisher and surrounding area is clean.
15. Allow 24 hours for the Betaseal™ 57302N urethane to cure.

## PARTS INFORMATION

DESCRIPTION	PART NUMBER	QUANTITY
Rear pillar molding, left	78873 – 9DJ1A	1
Rear pillar molding, right	78872 – 9DJ1A	1
Betaseal™ 57302N urethane (1)	999MP – 57302NP	(As needed)
Betaseal™ 43533 glass primer (2)	999MP – 43533PP	(As needed)
RUST-OLEUM Cold Galvanizing Compound (3)	7785830	(As needed)

- (1) The DOW® automotive chemical Betaseal™ 57302N urethane adhesive is recommended. Equivalent products may be used.
- (2) The DOW® automotive chemical Betaseal™ 43533 glass primer is recommended. Equivalent products may be used.
- (3) The RUST-OLEUM Cold Galvanizing Compound is recommended. Equivalent products may be used.

## CLAIMS INFORMATION

Submit a Primary Part (PP) type line claim using the following claims coding:

DESCRIPTION	PFP	OP CODE	SYM	DIA	FRT
Repair Rear Pillar Molding	(1)	BX6VAA	(2)	(2)	0.3

- (1) Reference the electronic parts catalog and use the **appropriate Rear Pillar Molding** as the Primary Failed Part (PFP).
- (2) Use Appropriate Symptom and Diagnosis Code for concern.

EXPENSE CODE	DESCRIPTION	MAX AMOUNT
067	Sealant/Primer	\$4.95

## AMENDMENT HISTORY

PUBLISHED DATE	REFERENCE	DESCRIPTION
October 11, 2019	NTB19-079	Original bulletin published
December 3, 2020	NTB19-079a	APPLIED VEHICLES and PARTS INFORMATION revised