



SERVICE CAMPAIGN BULLETIN

Classification: EL20-044	Reference: NTB20-096	Date: December 21, 2020
-----------------------------	-------------------------	----------------------------

VOLUNTARY SERVICE CAMPAIGN BCM REPROGRAM TO DISABLE FOG LAMP OPERATION DURING HIGH BEAM OPERATION

CAMPAIGN ID #: P0A34
APPLIED VEHICLES: 2020 Sentra (B18) – SR

**Check Service COMM or Dealer Business Systems (DBS)
National Service History to confirm campaign eligibility.**

INTRODUCTION

Nissan is conducting this voluntary service campaign, on certain specific model year 2020 Sentra SR models, to reprogram the BCM in order to disable fog lamp operation when the high beams are in use. This service will be performed at no charge to the customer for parts or labor.

IDENTIFICATION NUMBER

Nissan has assigned identification number P0A34 to this campaign. This number must appear on all communication and documentation of any nature dealing with this campaign.

DEALER RESPONSIBILITY

Dealers are to repair vehicles falling within range of this campaign that enter the service department. This includes vehicles purchased from private parties, vehicles presented by transient (tourists) owners, and vehicles in a dealer's inventory.

Nissan Bulletins are intended for use by qualified technicians, not 'do-it-yourselfers'. Qualified technicians are properly trained individuals who have the equipment, tools, safety instruction, and know-how to do a job properly and safely. **NOTE:** If you believe that a described condition may apply to a particular vehicle, DO NOT assume that it does. See your Nissan dealer to determine if this applies to your vehicle.

SERVICE PROCEDURE

Document the BCM Configuration Settings

IMPORTANT: Before starting, make sure:

- ASSIST on the CONSULT PC has been synchronized (updated) to the current date.
- All C-III plus software updates (if any) have been installed.
- During the reprogramming process, you will receive some errors. These errors are expected. Please follow all of the steps in this procedure to successfully complete the reprogramming process.

NOTICE

- Connect a battery maintainer or smart charger set to reflash mode or a similar setting. If the vehicle battery voltage drops below 12.0V or rises above 15.5V during reprogramming, the BCM may be damaged.
- Be sure to turn OFF all vehicle electrical loads.
If a vehicle electrical load remains ON, the BCM may be damaged.
- Be sure to connect the AC Adapter.
If the CONSULT PC battery voltage drops during reprogramming, the process will be interrupted and the BCM may be damaged.
- Turn OFF all external Bluetooth® devices (e.g., cell phones, printers, etc.) within range of the CONSULT PC and the VI. If Bluetooth® signal waves are within range of the CONSULT PC or VI during reprogramming, reprogramming may be interrupted and the BCM may be damaged.

1. Connect the VI to the vehicle.
2. Start C-III plus.
3. Wait for the VI to be recognized.
 - The serial number will display when the VI is recognized.

4. Select Re/programming, Configuration.

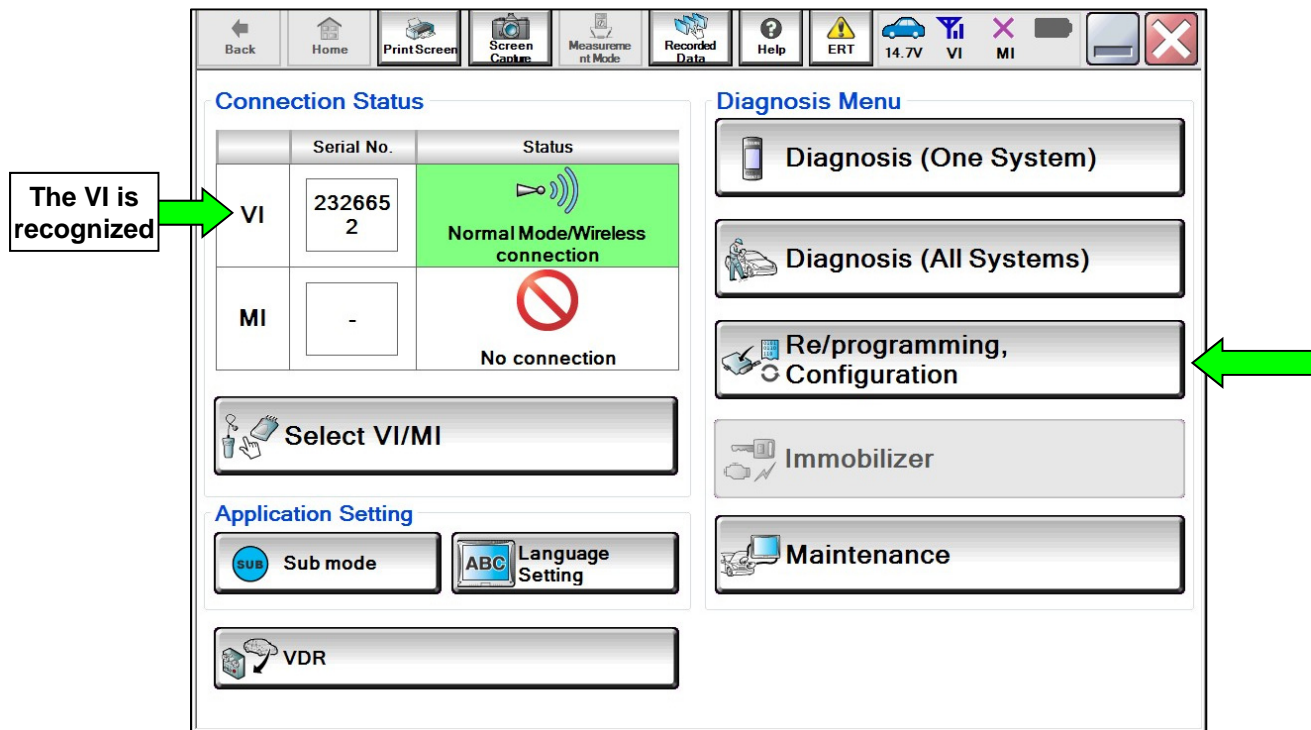


Figure 1

5. Check the box to confirm the precaution instructions have been read, and then select **Next**.

NOTE: Use the arrows (if needed) to view and read all the precautions.

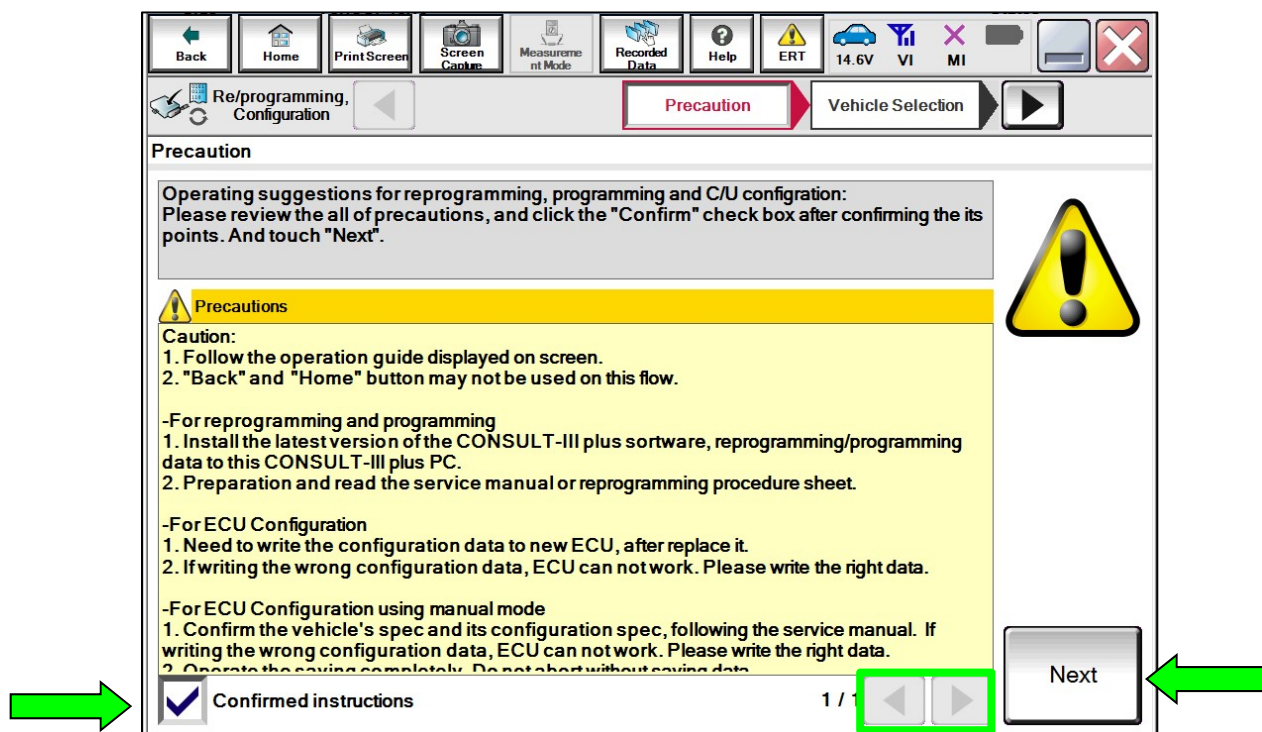


Figure 2

6. Select Automatic Selection(VIN).

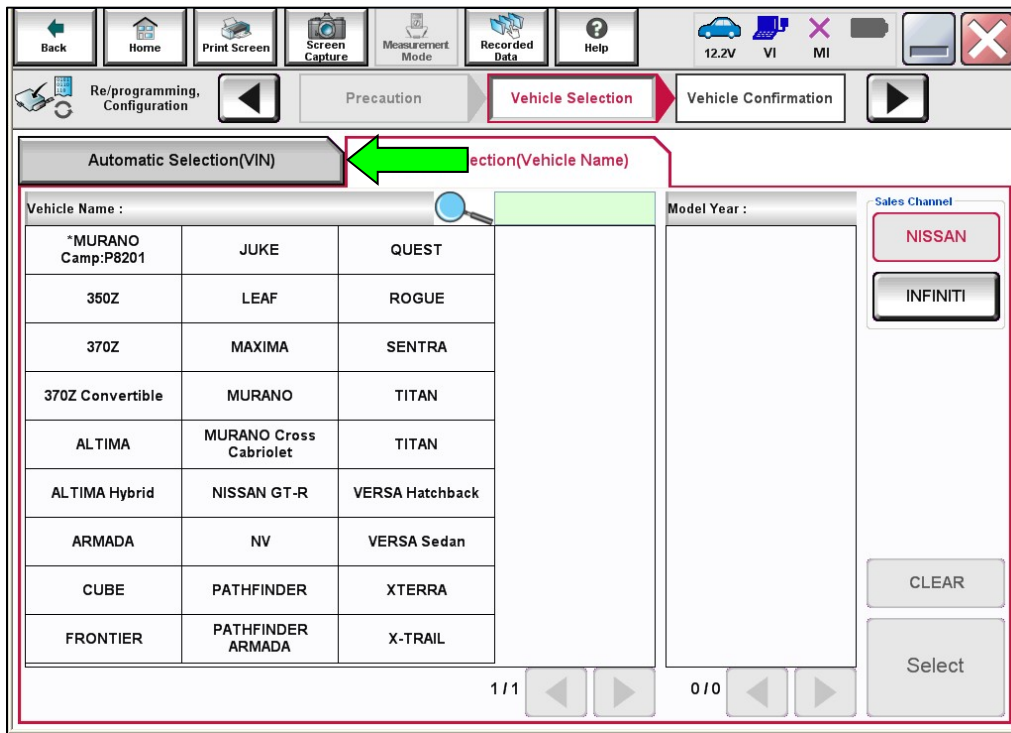


Figure 3

7. Allow the CONSULT to perform automatic VIN selection.

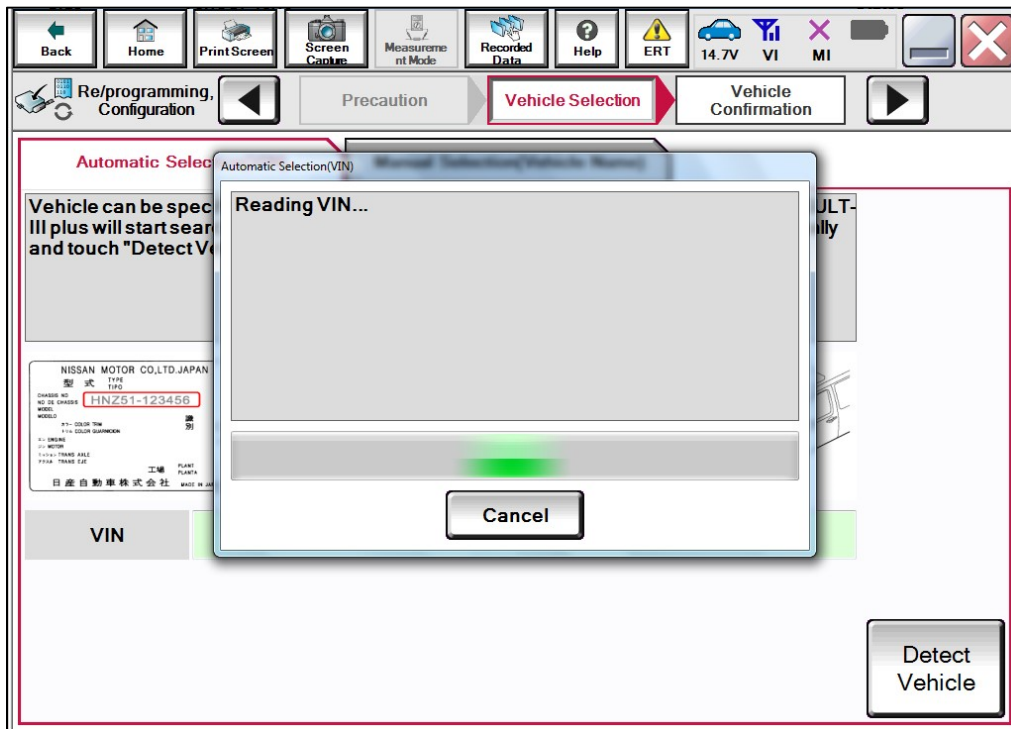


Figure 4

8. Confirm the **VIN or Chassis #** is correct, and then select **Confirm**.

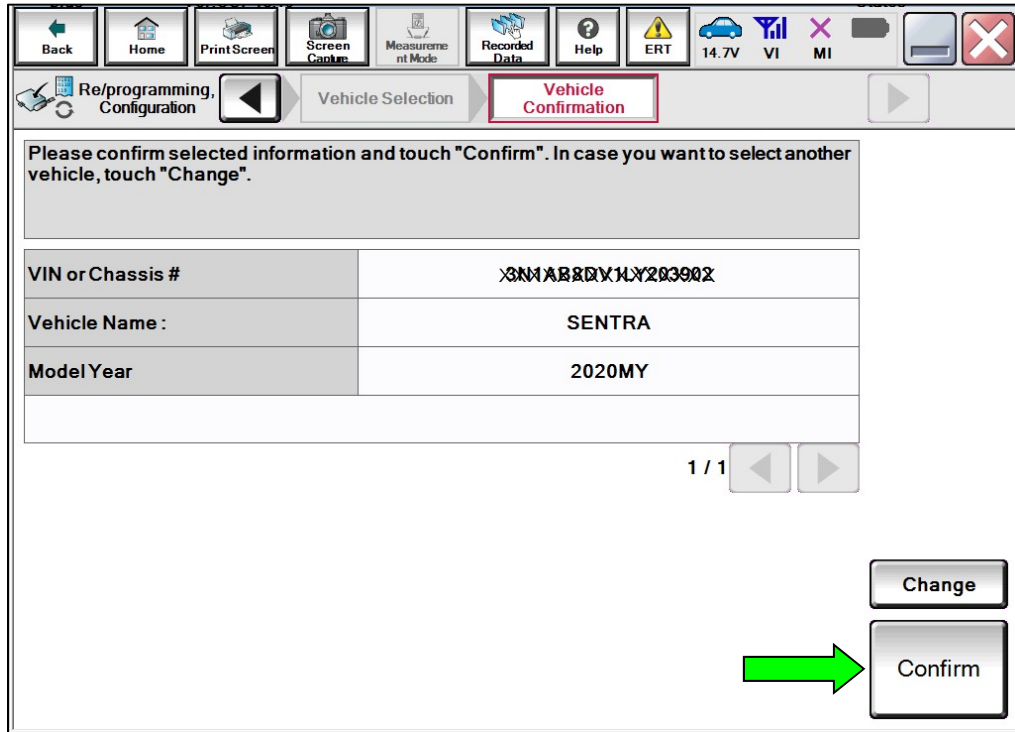


Figure 5

9. Allow the System call to be performed.

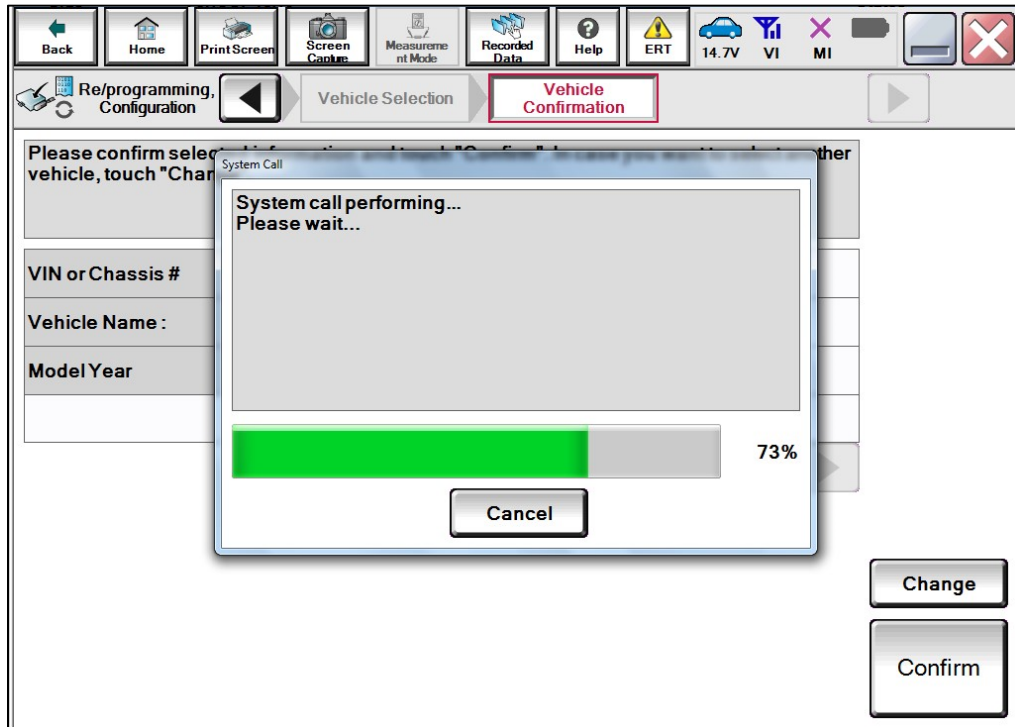


Figure 6

10. Confirm the VIN is correct for the vehicle, and then select **Confirm**.

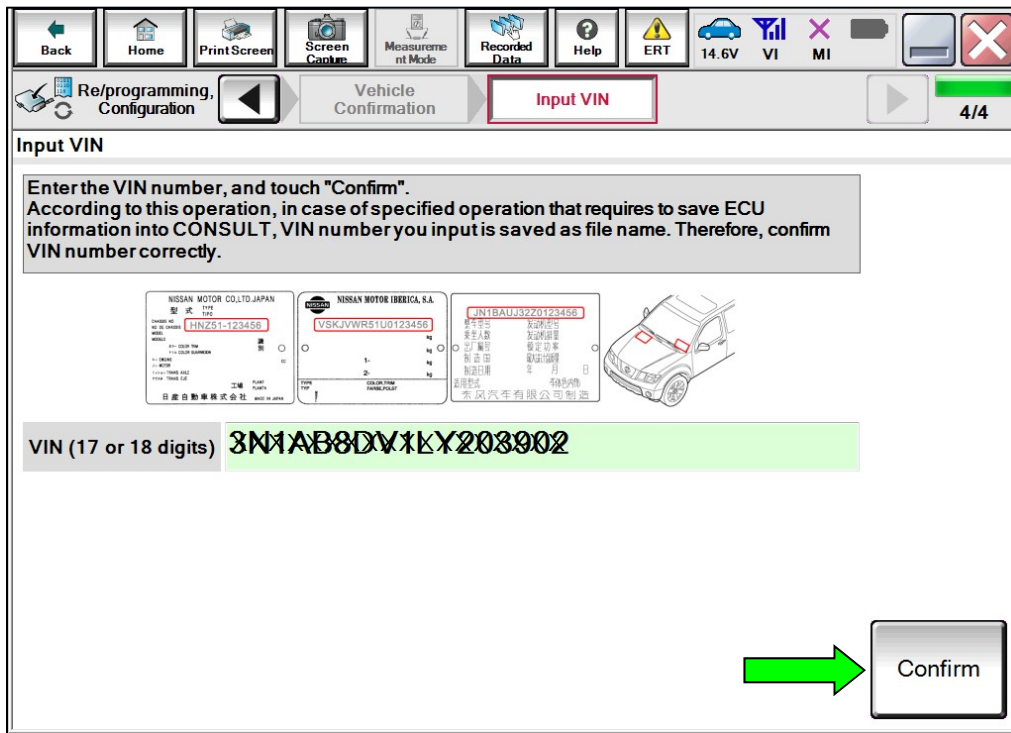


Figure 7

11. Go to the second page by selecting the "Right" arrow.

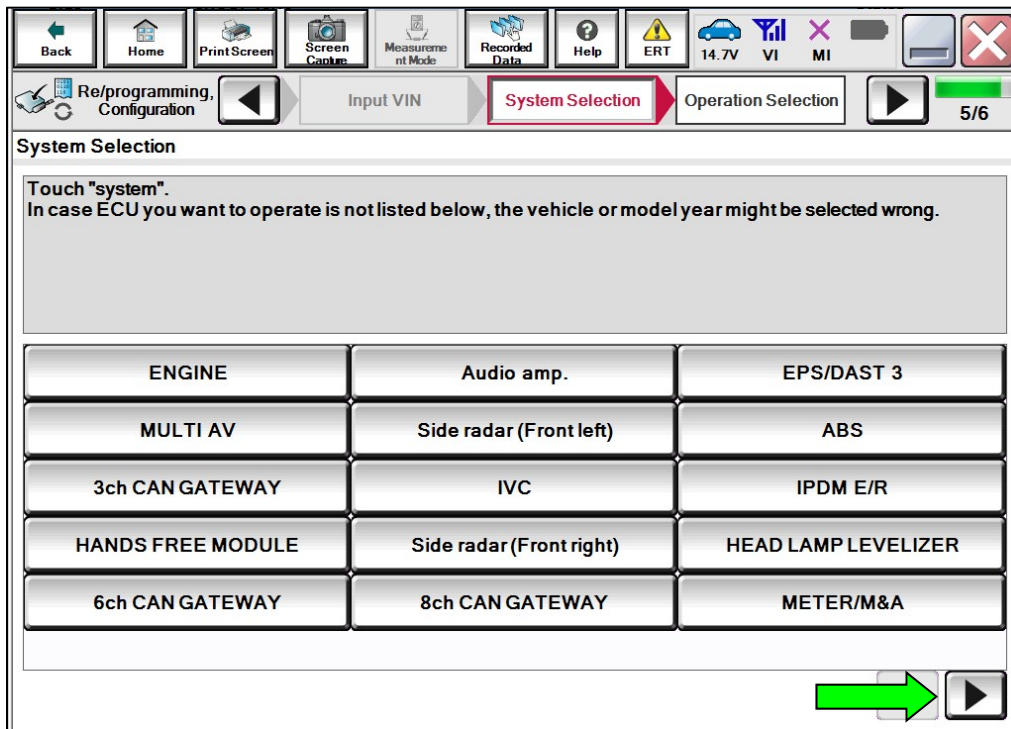


Figure 8

12. Select **BCM**.

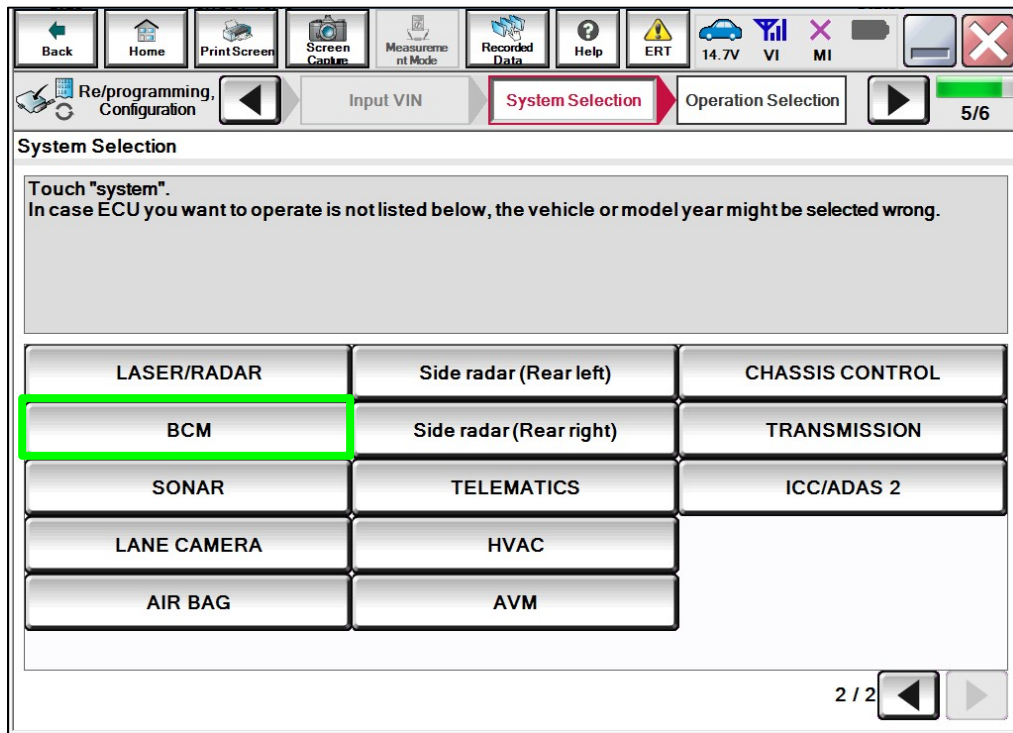


Figure 9

13. Select **Before ECU Replacement** under **VEHICLE CONFIGURATION**.

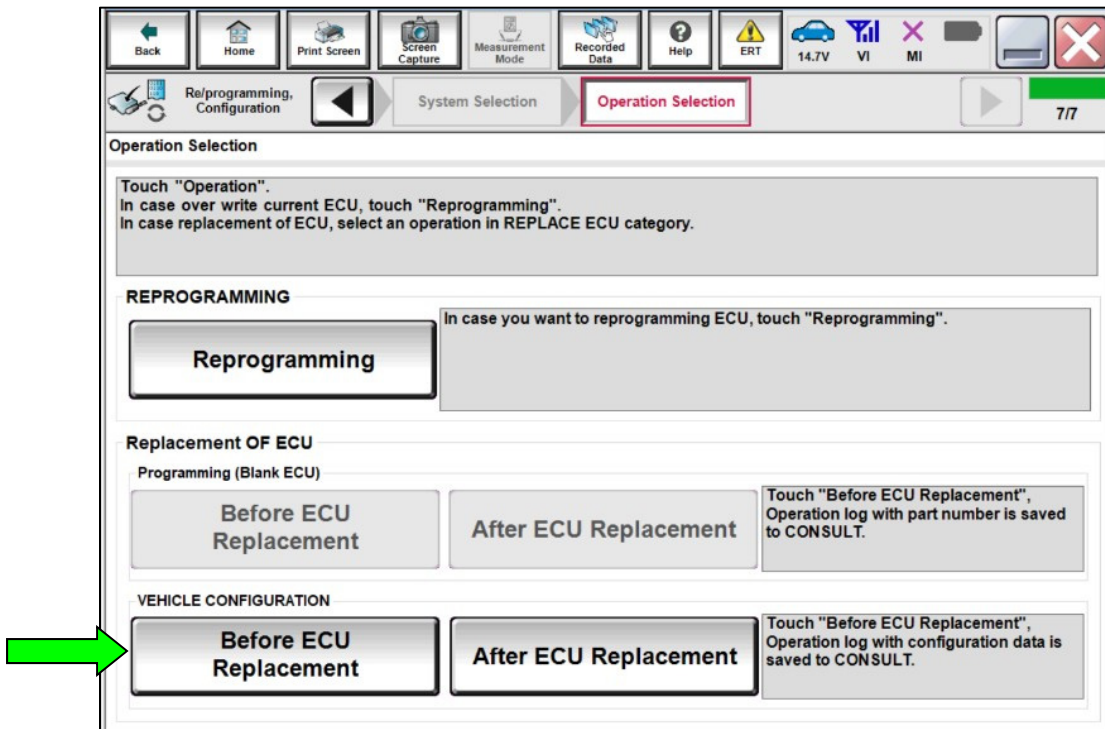


Figure 10

14. Scroll through each of the four pages of configuration items and write down each item and setting value.
- If a printer is connected to the CONSULT PC, you may select **Print**.

IMPORTANT: Document or print all configuration settings as these settings will be used in step 31 and the SAVE function for this reprogram will **NOT** work.

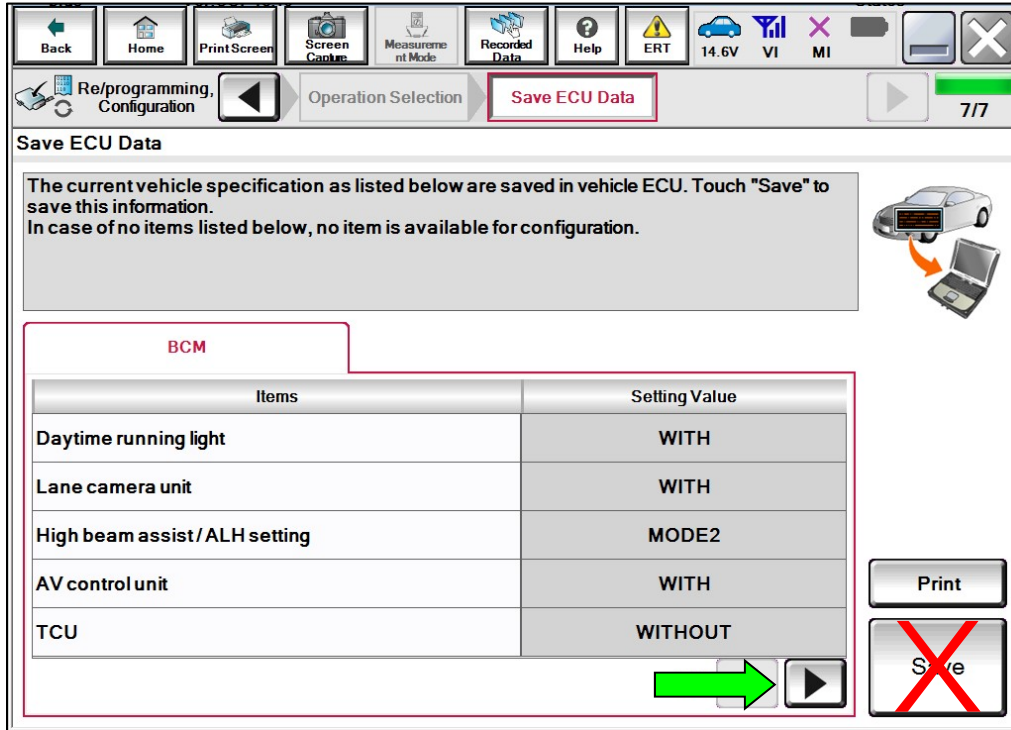
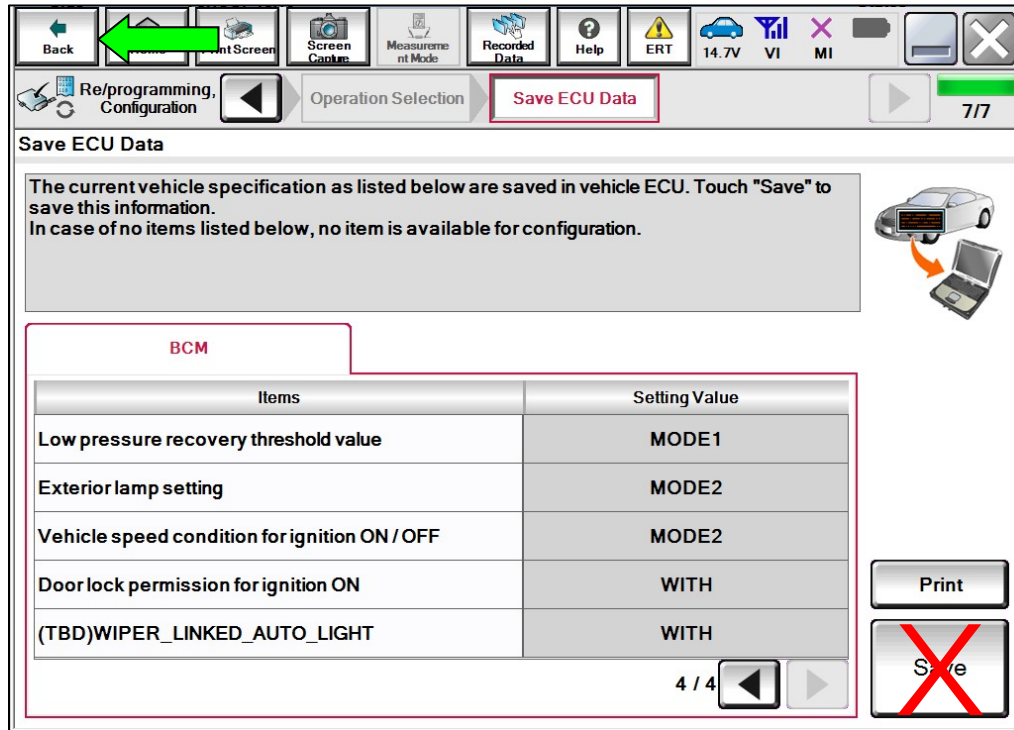


Figure 11

- Once all the setting values have been documented, select **Back** in the upper left hand portion of the screen.



BCM

Items	Setting Value
Low pressure recovery threshold value	MODE1
Exterior lamp setting	MODE2
Vehicle speed condition for ignition ON / OFF	MODE2
Door lock permission for ignition ON	WITH
(TBD)WIPER_LINKED_AUTO_LIGHT	WITH

4 / 4

Figure 12

Reprogram the BCM

IMPORTANT: During the reprogramming process, you will receive some errors. These errors are expected. Please follow all of the steps in this procedure to successfully complete the reprogramming process.

16. Select **Reprogramming**.

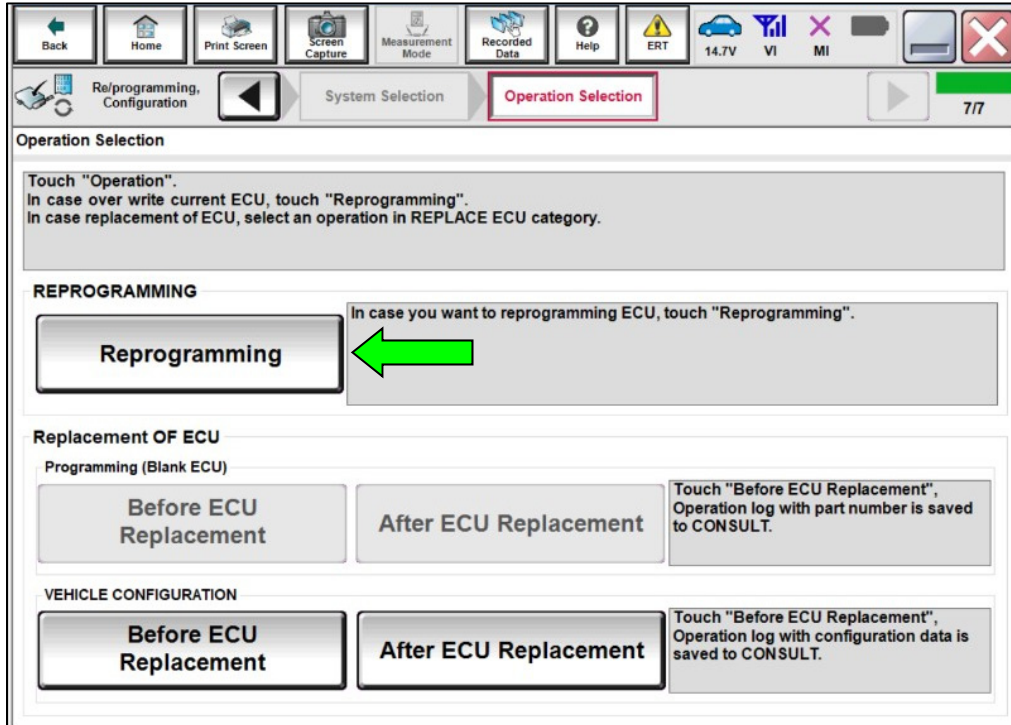


Figure 13

17. Find the BCM **Part Number** and write it on the repair order, and then select **Save**.

NOTE: This is the current Part Number (P/N).

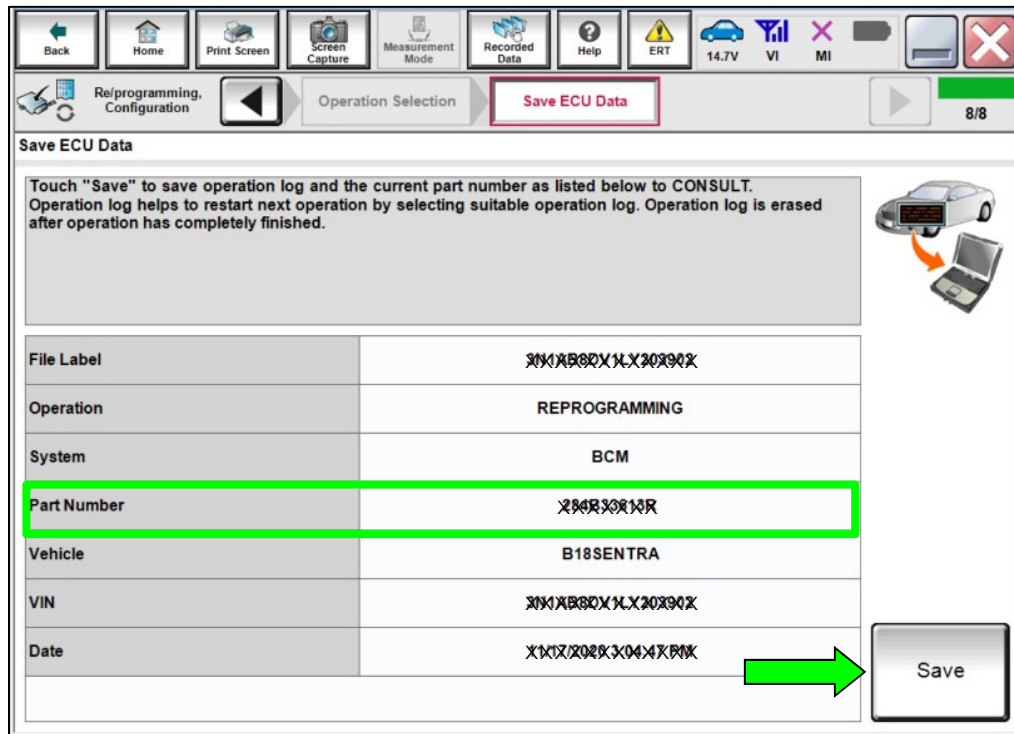


Figure 14

18. Check the box to confirm the precaution instructions have been read, and then select **Next**.

NOTE: Use the arrows (if needed) to view and read all the precautions.

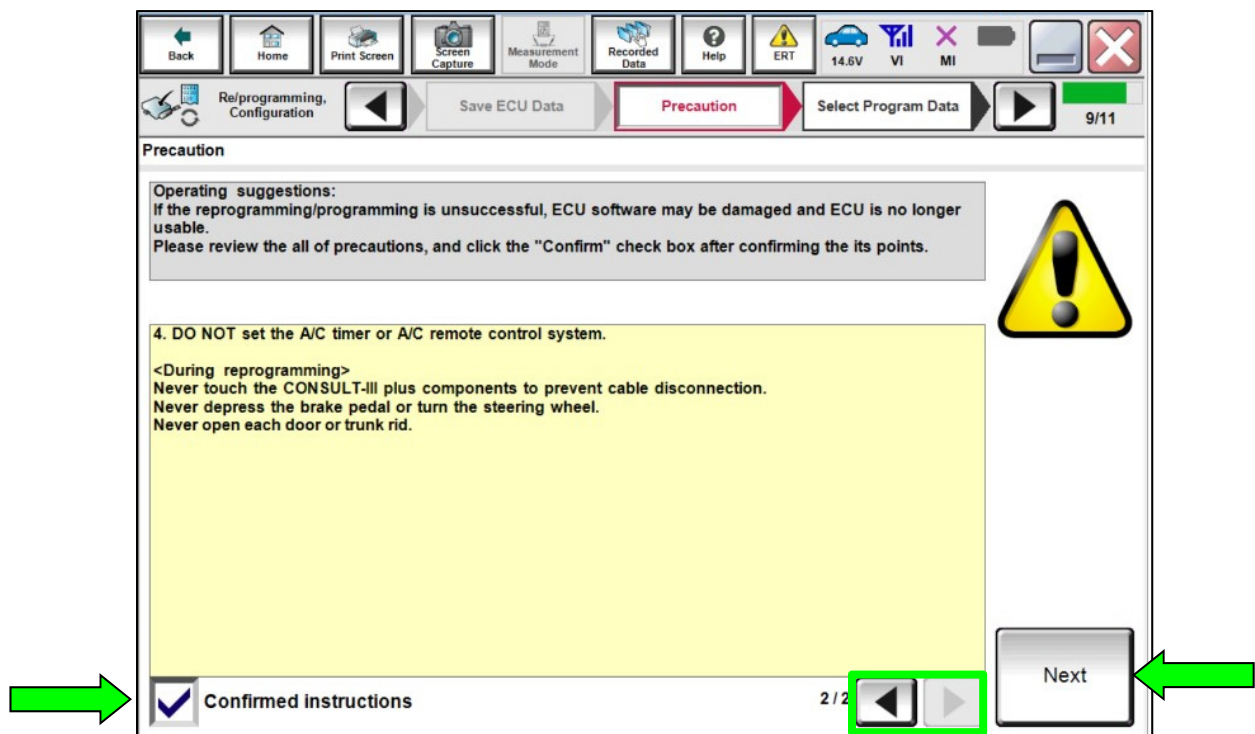


Figure 15

19. Read the **Current Part Number** and **Part Number After Repro/programming**. They should be different (Figure 16).
20. Select **Next**.

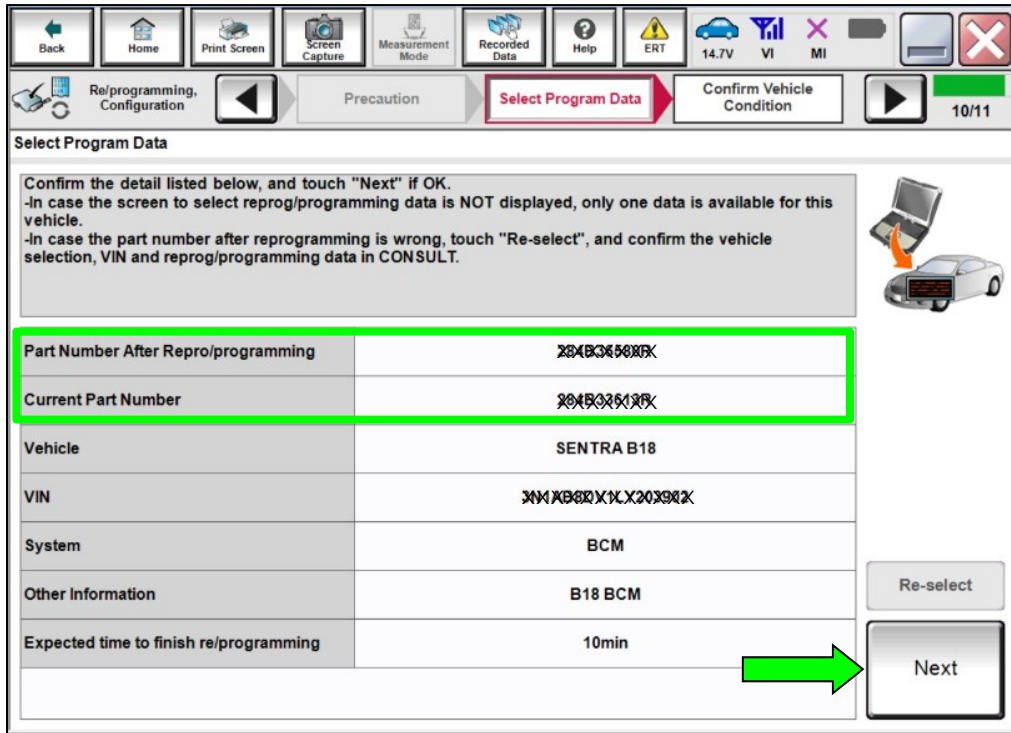


Figure 16

21. Confirm the battery charger is ON and the battery voltage is between 12V-15.5V, and then select **Next**.

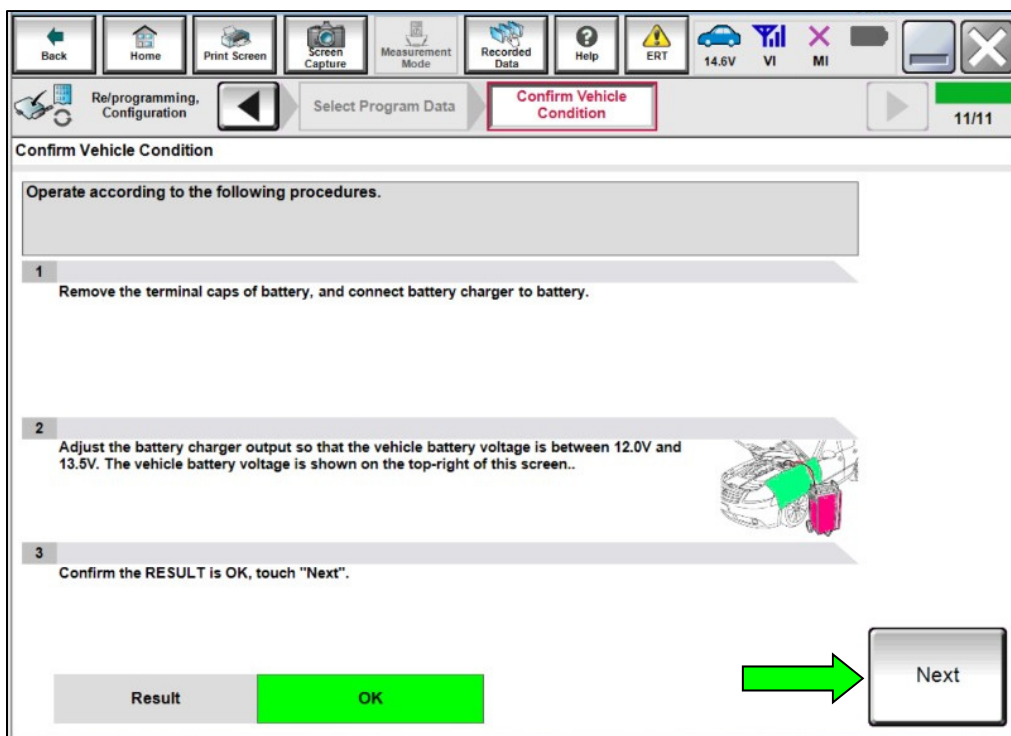


Figure 17

22. Confirm the battery voltage Judgment is OK, and then select **Start**.

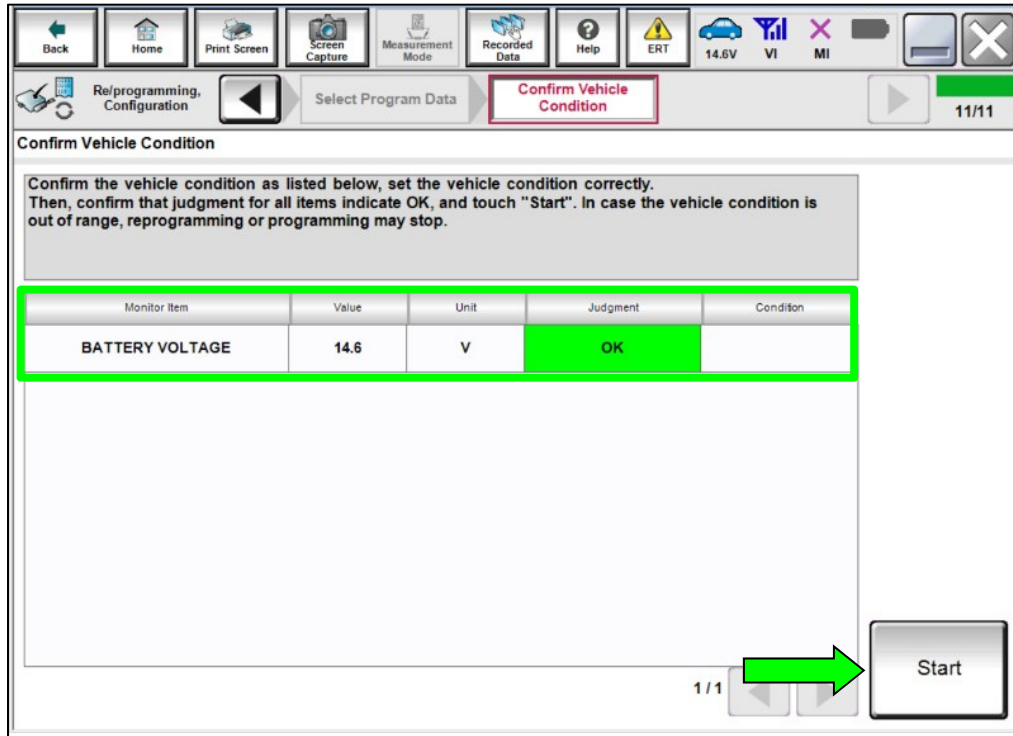


Figure 18

23. Select **USA/CANADA Dealers** from the drop down menu, and then select **OK**.

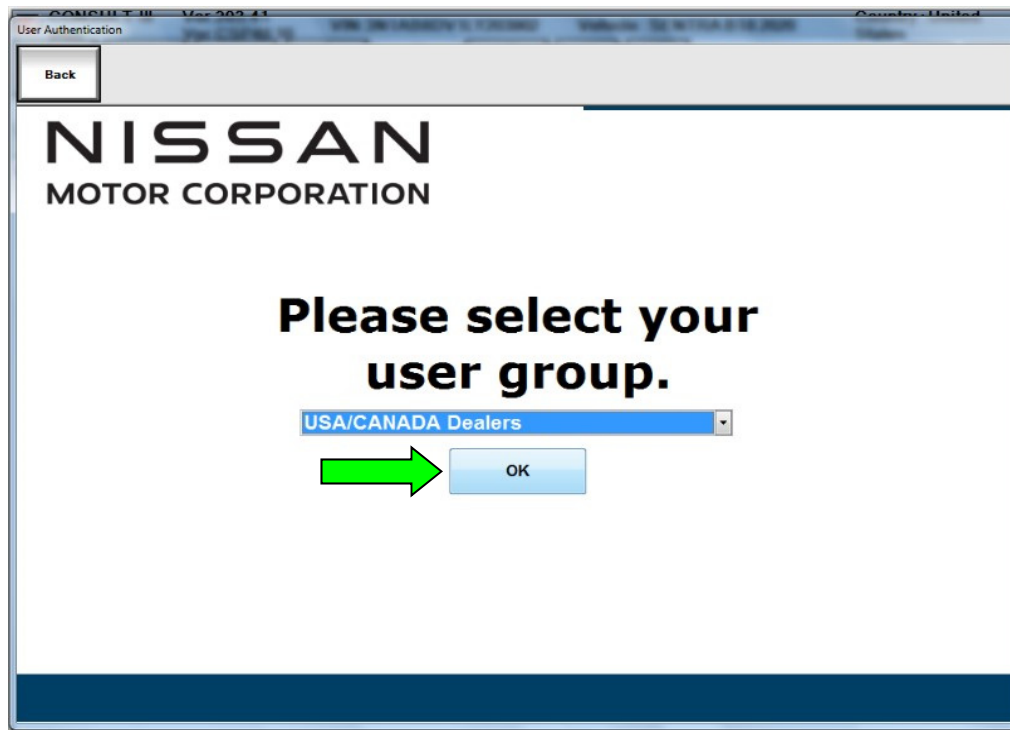


Figure 19

24. Login using your NNAnet credentials.

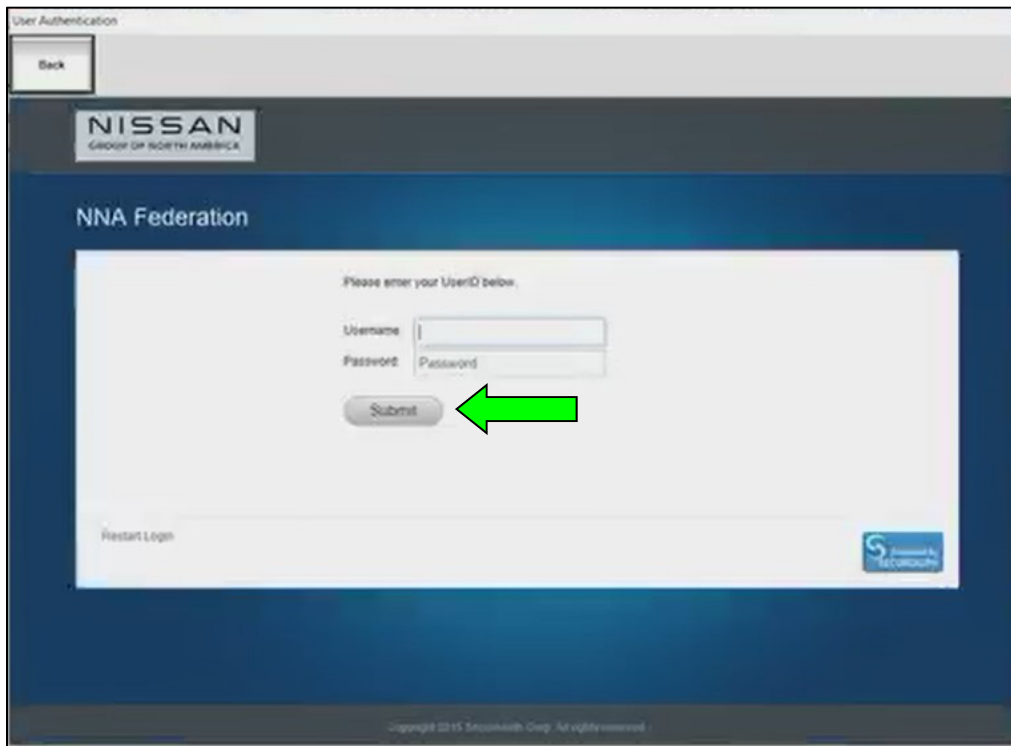


Figure 20

25. Allow CONSULT to reprogram the BCM.

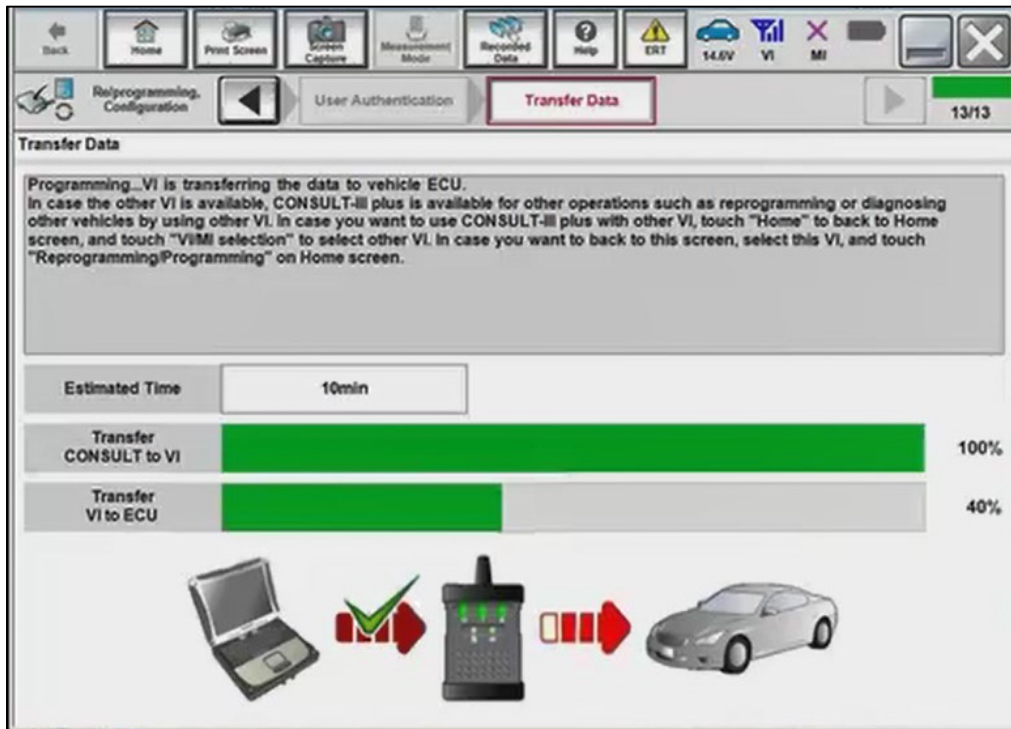


Figure 21

26. Toward the end of the reprogram, the CONSULT will show an Error Code “**Reprogramming Ignition off Error**” and the vehicle ignition will turn off.
- a) Turn the ignition ON, engine OFF.
 - b) Select **Retry**.

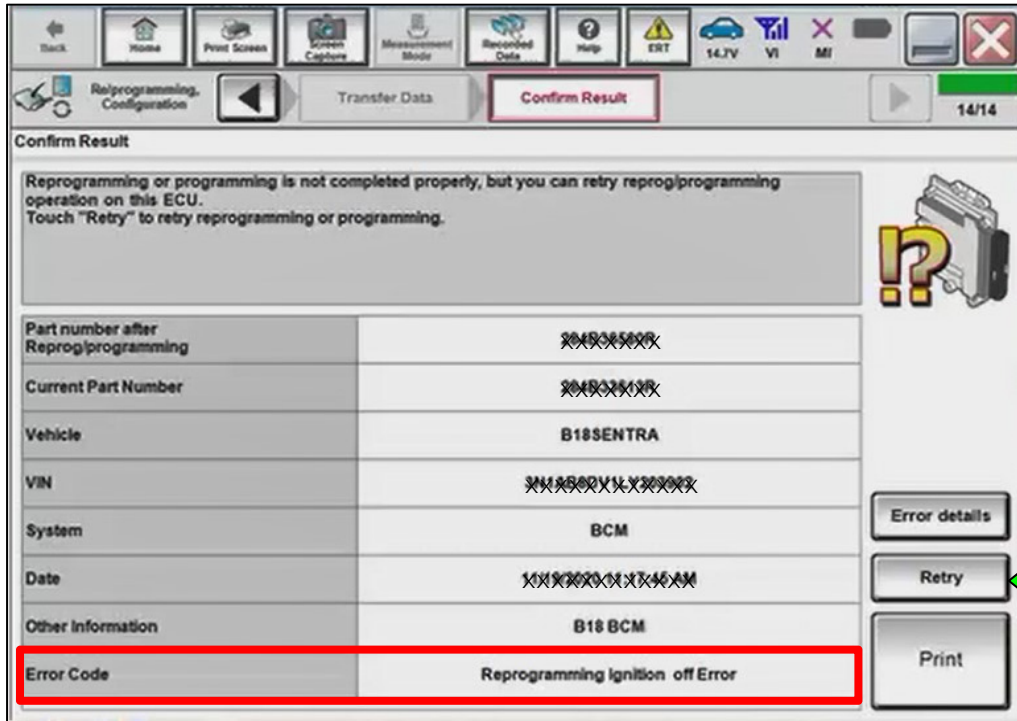


Figure 22

27. If Error Code description “**Reprogramming Not Needed**” is displayed after another reattempt, this indicates the reprogramming has successfully completed. Select **Home**, and then proceed to step 28 on page 18.

NOTE: If the screen in Figure 23 does not display (indicating that reprogramming did not complete), refer to the information on the next page.

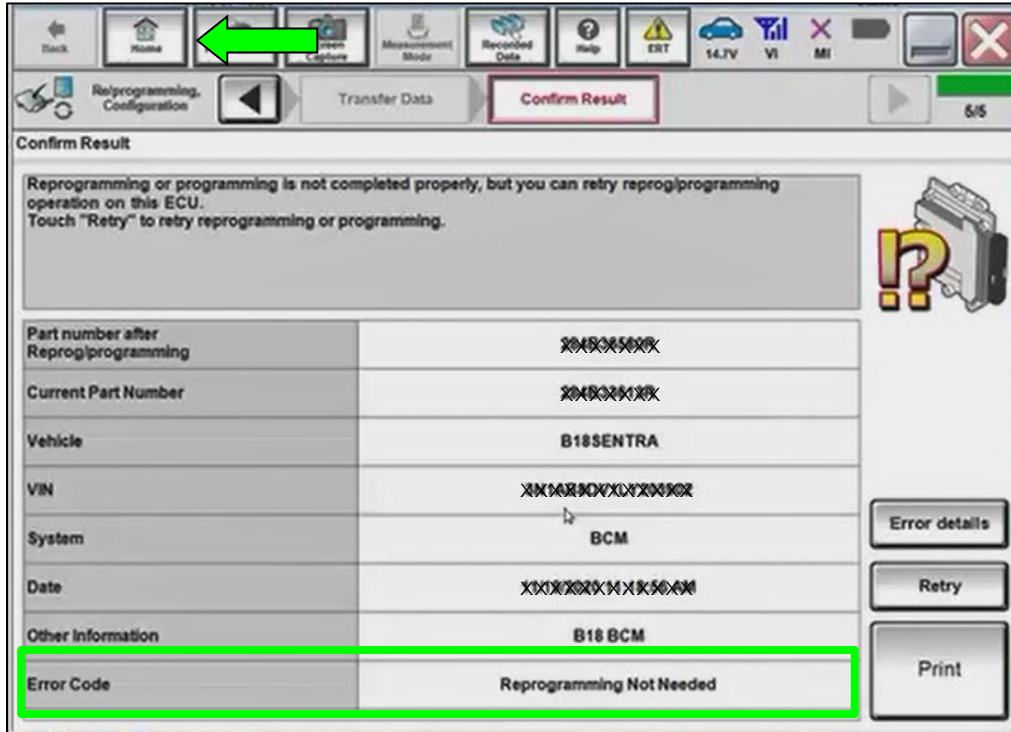


Figure 23

BCM Recovery:

If reprogramming does not complete and the “!?” symbol displays as shown in Figure 24:

- Check battery voltage (12.0 – 15.5V).
- Ignition is ON, Engine is OFF.
- External Bluetooth® devices are OFF.
- All electrical loads are OFF.
- Select Retry and follow the on screen instructions.

NOTE: Retry may not go through on first attempt and can be selected more than once.

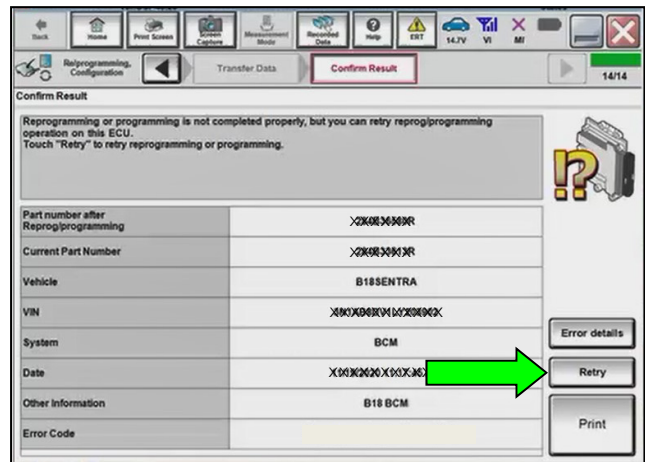


Figure 24

If reprogramming does not complete and the “X” symbol displays as shown in Figure 25:

- **Do not disconnect the VI or shut down C-III plus if reprogramming does not complete.**
- Check battery voltage (12.0 – 15.5V).
- CONSULT A/C adapter is plugged in.
- Ignition is ON, Engine is OFF.
- Transmission in Park.
- All C-III plus / VI cables are securely connected.
- All C-III plus updates are installed.
- Select Home, and then restart the reprogram procedure from the beginning.

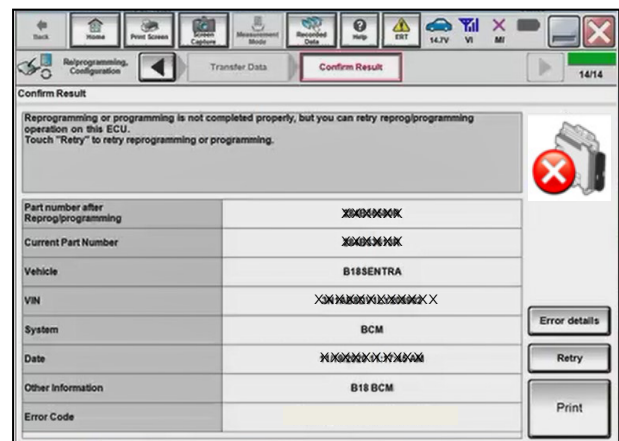


Figure 25

Configure the BCM

IMPORTANT: Approximately 90 seconds after the reprogram has completed, the BCM will enter battery saver mode and will turn the ignition off.

- Periodically check the vehicle to verify the ignition is still on and turn the ignition to the ON position as needed.
- This condition will no longer be present after the BCM has been configured.

28. Repeat steps 4 - 12 on pages 3 -7.

29. Select **After ECU Replacement** under **VEHICLE CONFIGURATION**.

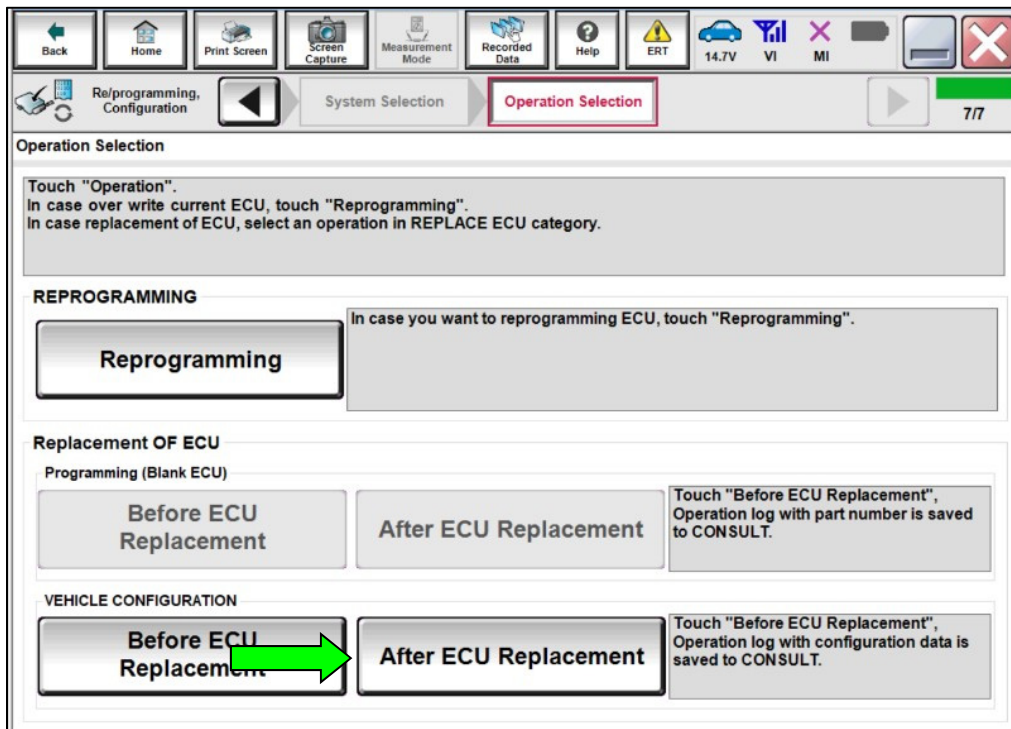


Figure 26

30. Select **Manual selection**.

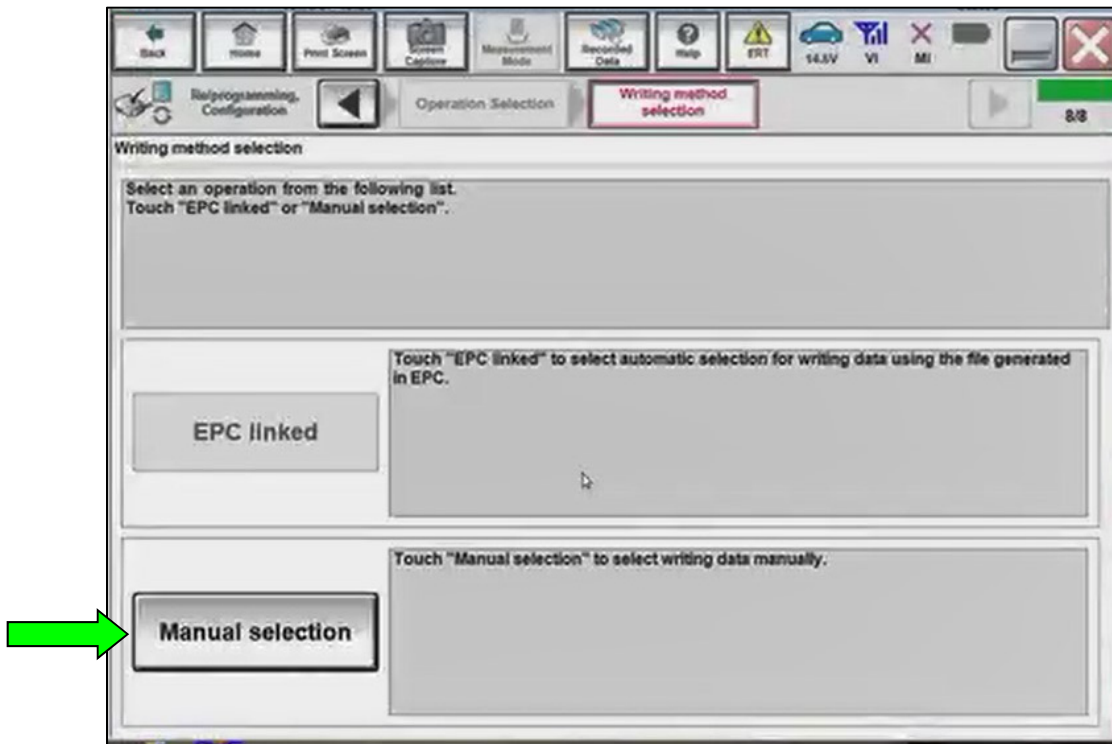


Figure 27

31. Select the Setting Value for each item that was documented in step 14.

NOTE: The configuration item list, after the reprogramming, will be reduced compared to step 14.

32. Select **Next**.

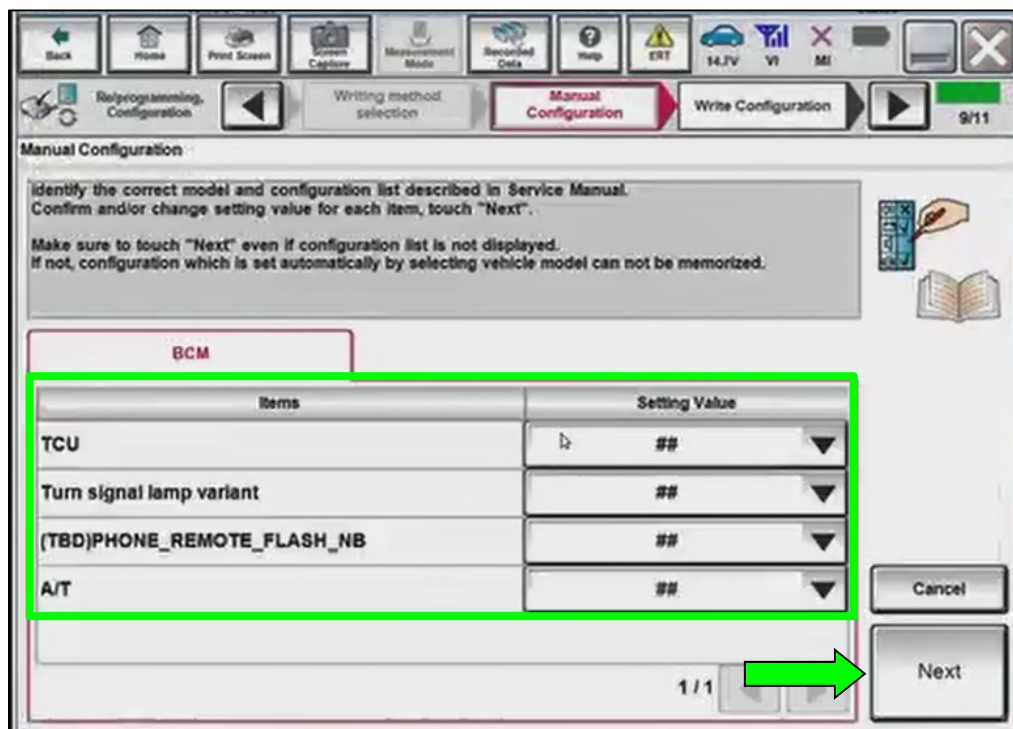


Figure 28

33. Select **OK** to write the configuration.

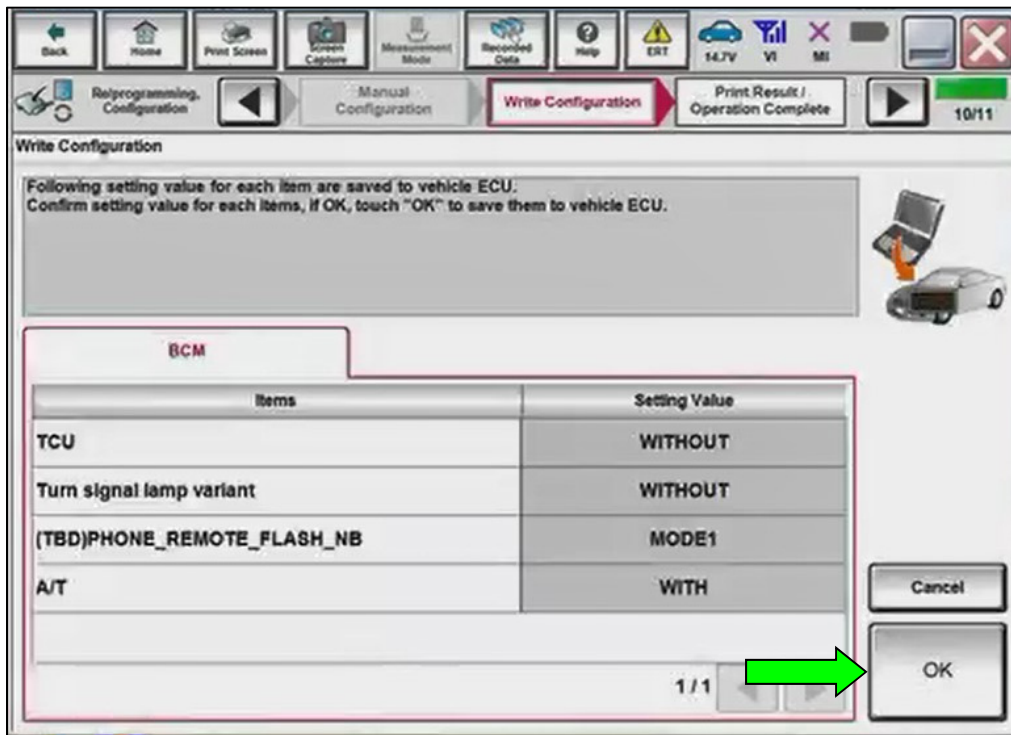


Figure 29

34. Allow the configuration to write to the BCM.

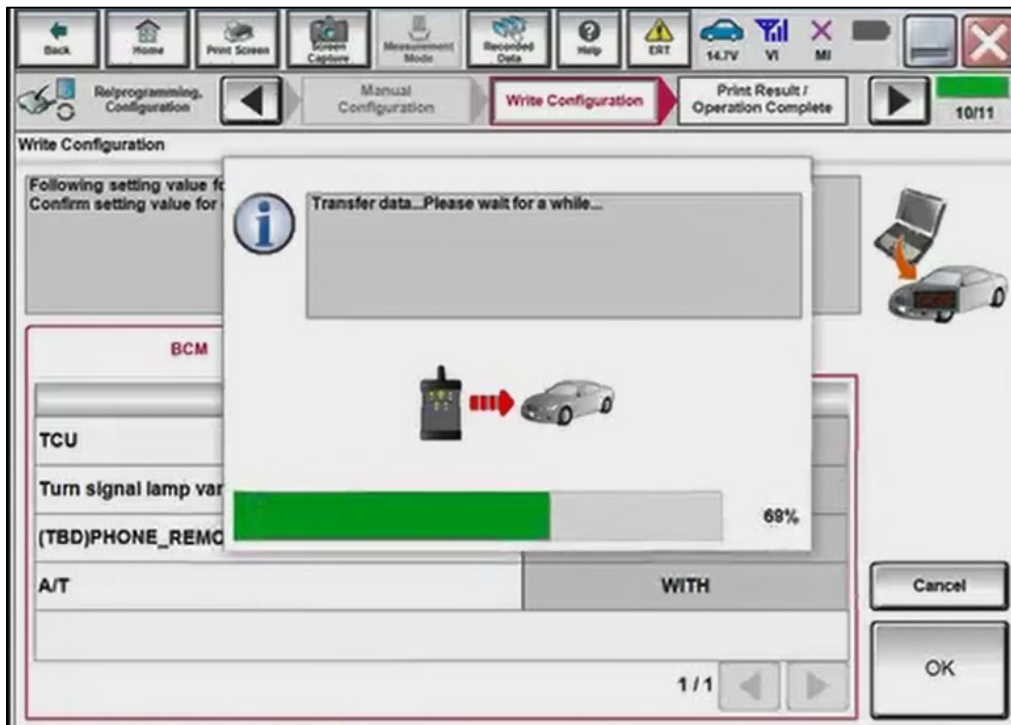


Figure 30

35. Select **End**.

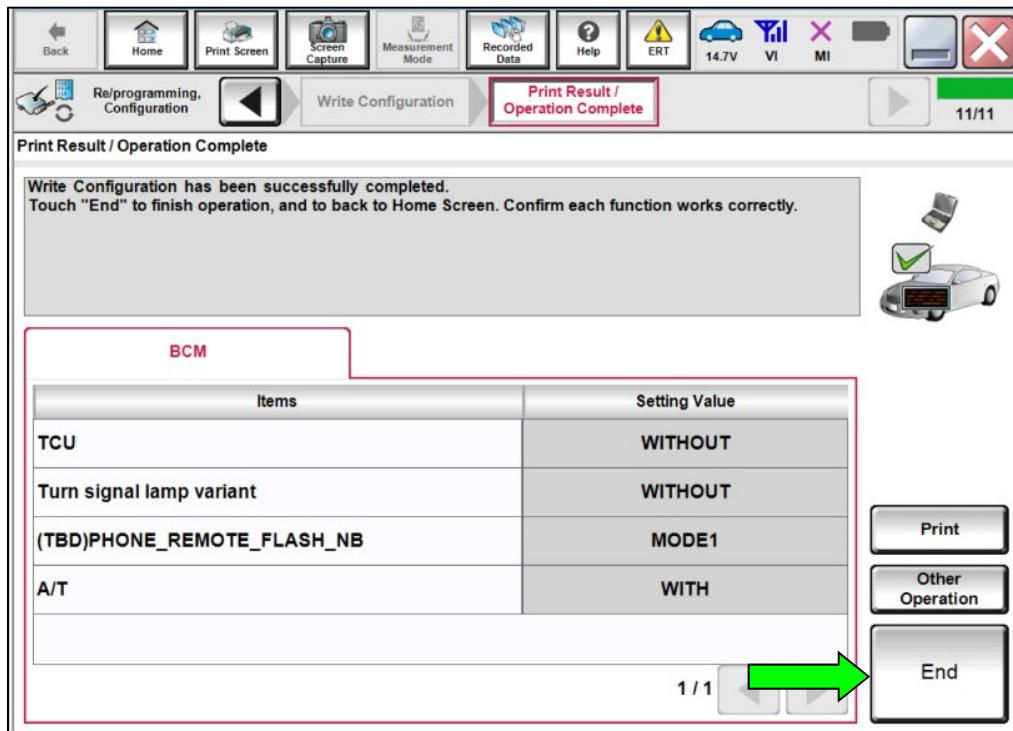


Figure 31

Register TPMS Sensors

36. Register the TPMS sensors.

- For TPMS sensor ID registration, refer to the Electronic Service Manual (ESM) section: **SUSPENSION > ROAD WHEELS & TIRES > BASIC INSPECTION > ID REGISTRATION PROCEDURE.**

Erase DTCs

37. Select **Diagnosis (All Systems)**.

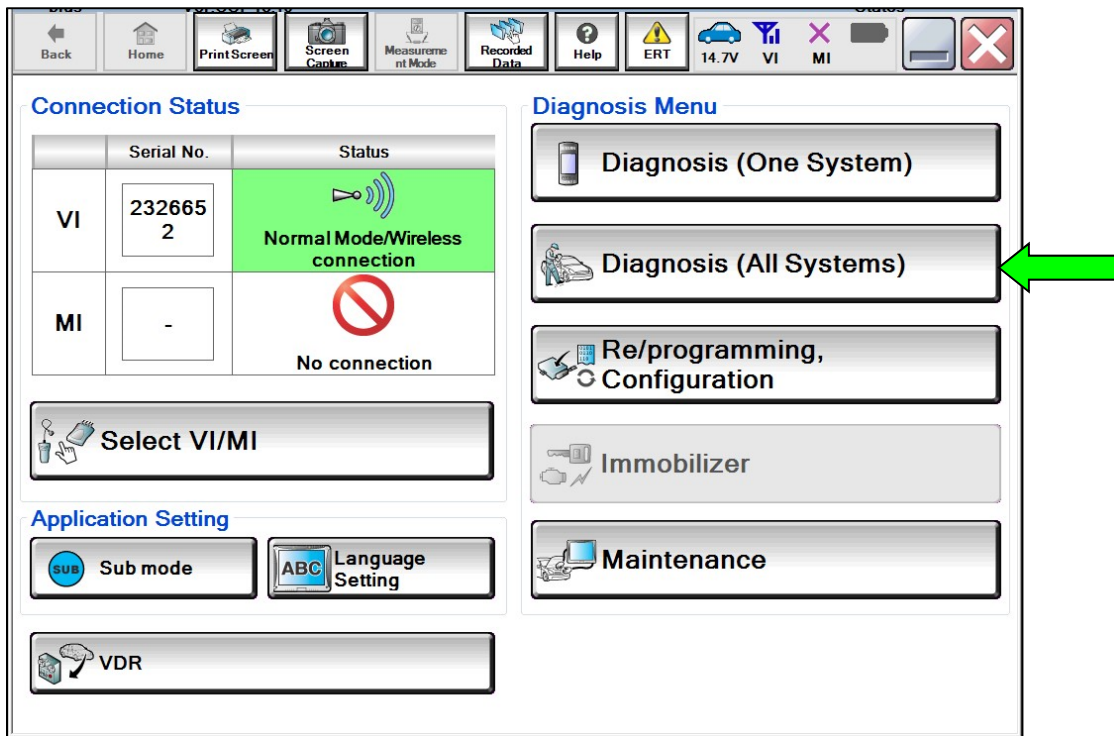


Figure 32

38. Select **Automatic Selection(VIN)**.

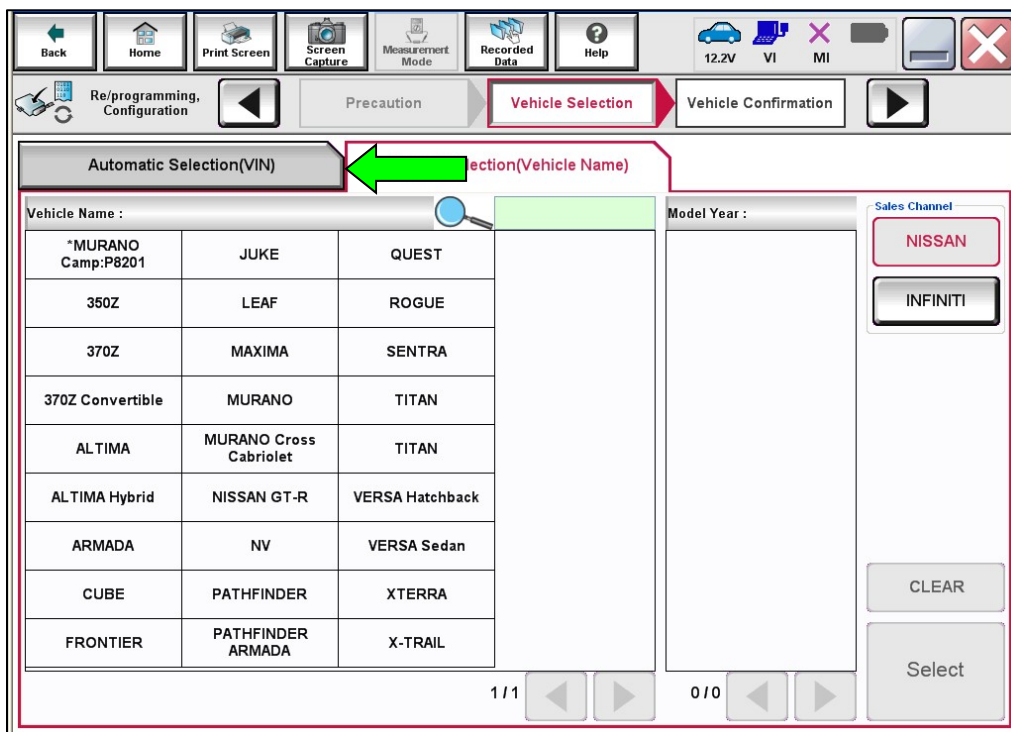


Figure 33

- Allow the CONSULT to perform automatic VIN selection.

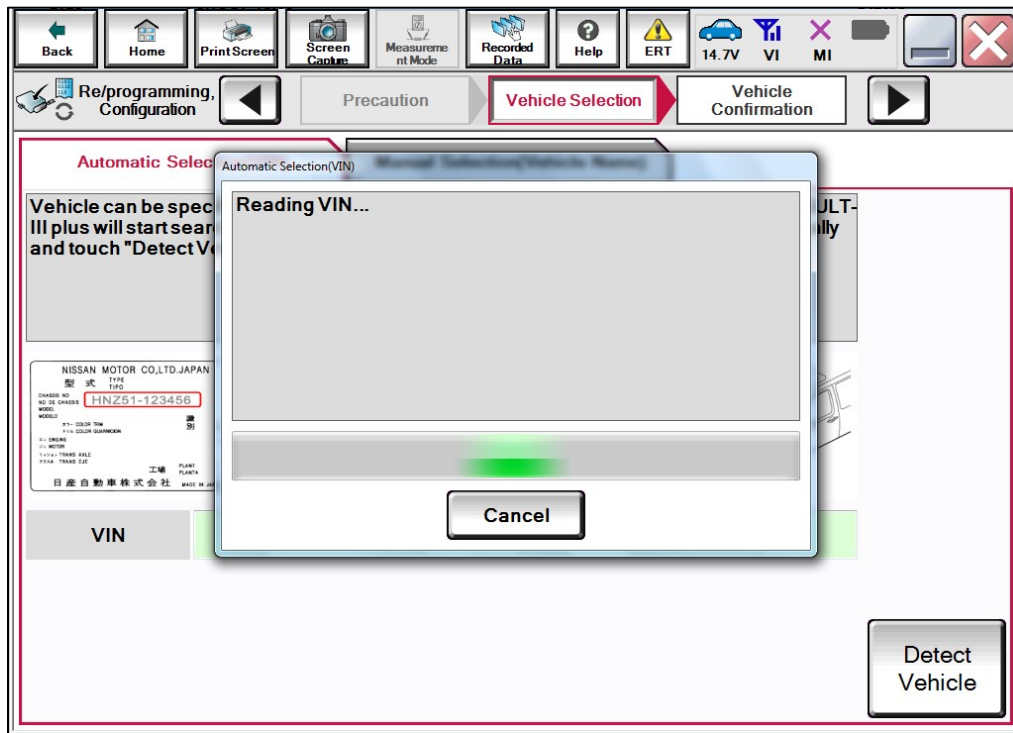


Figure 34

- Confirm the **VIN or Chassis #** is correct, and then select **Confirm**.

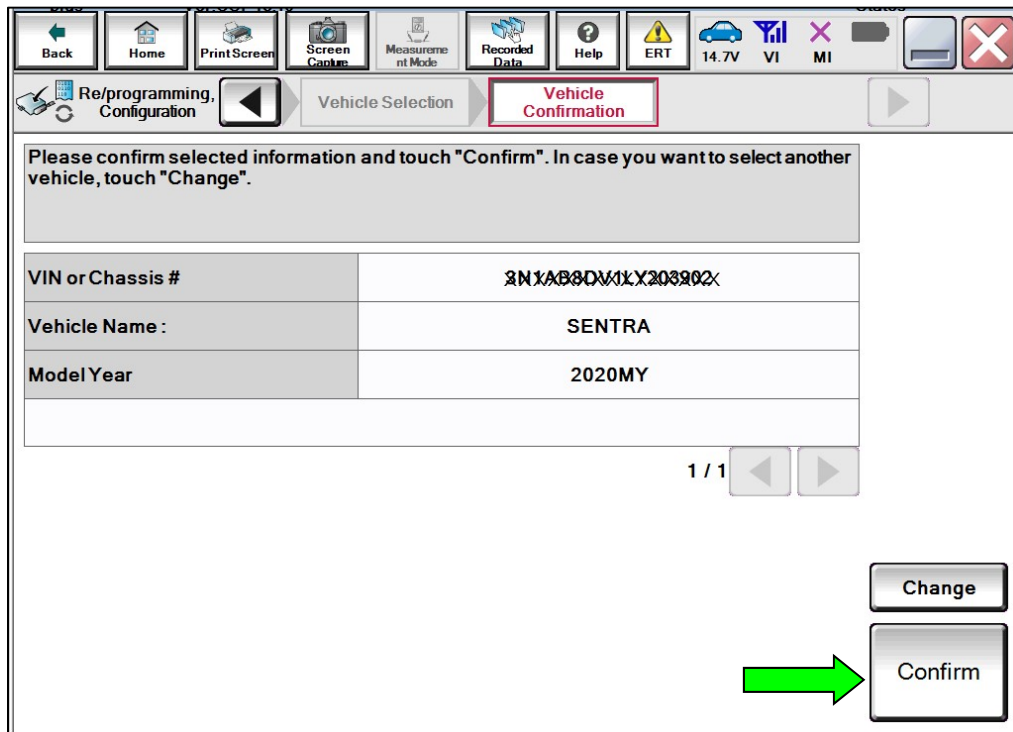


Figure 35

41. Select **ERASE**.



Figure 36

42. Select **Execute**.

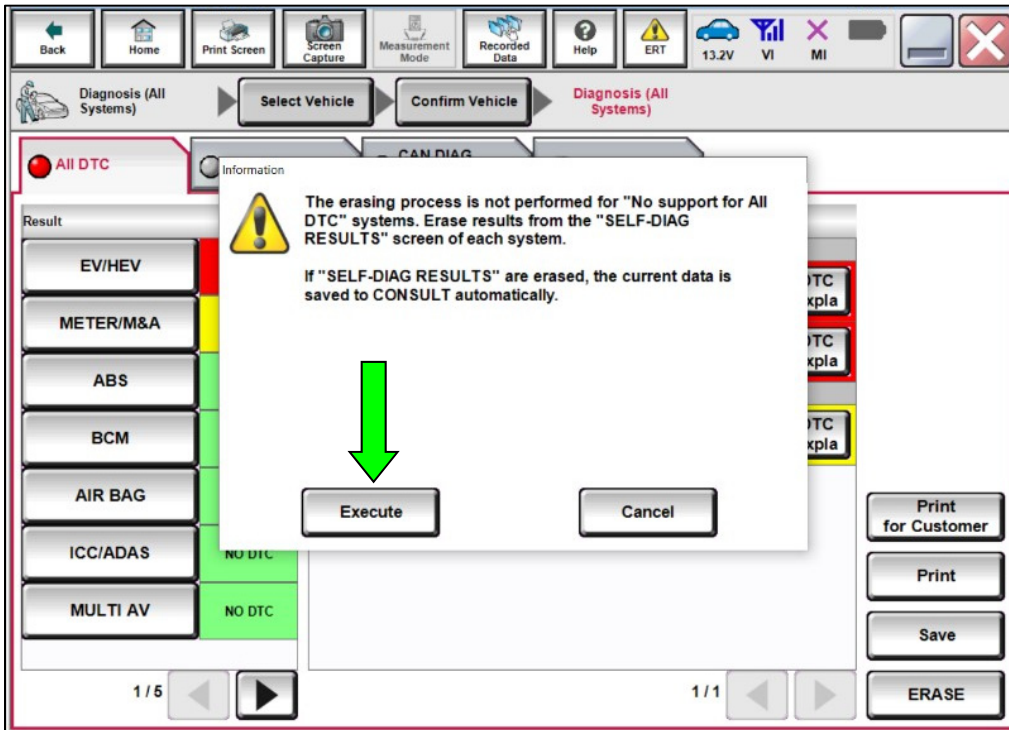


Figure 37

43. Select **Close**.

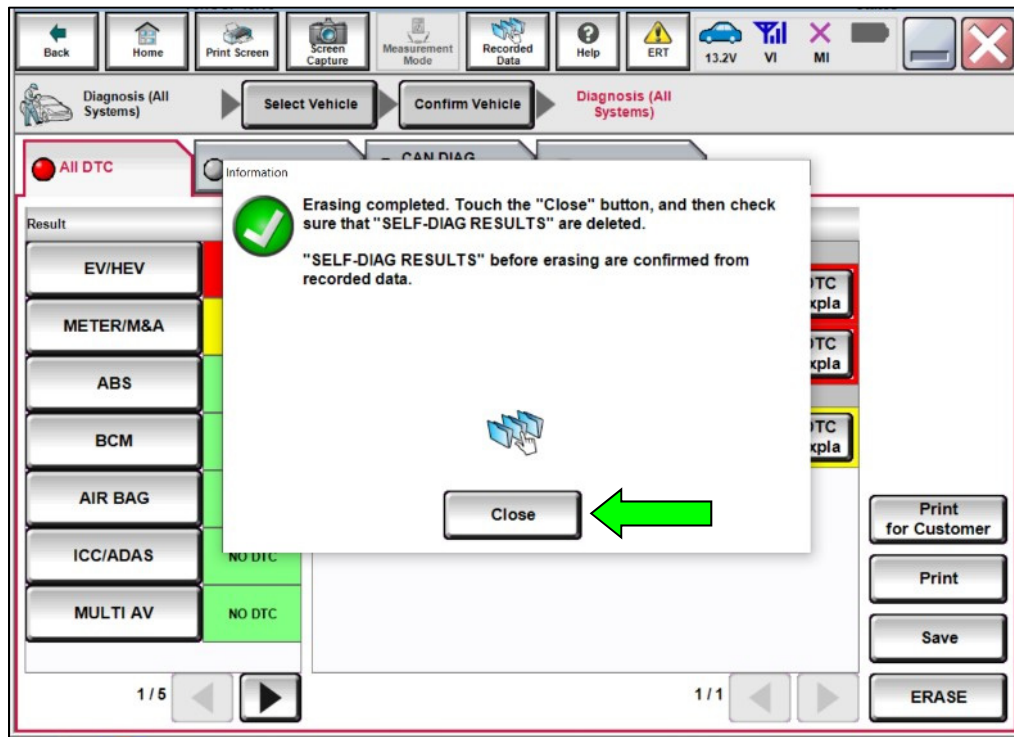


Figure 38

44. Close the C-III plus application.

45. Remove the VI from the vehicle.

CLAIMS INFORMATION

Submit a "CM" line claim using the following claims coding:

CAMPAIGN ("CM") ID	DESCRIPTION	OP CODE	FRT
P0A34	Check Part Number, Reprogram Not Needed	P0A340	0.3 hrs
	Reprogram and Configure the Body Control Module (BCM)	P0A341	0.8 hrs

AMENDMENT HISTORY

PUBLISHED DATE	REFERENCE	DESCRIPTION
December 21, 2020	NTB20-096	Original bulletin published