

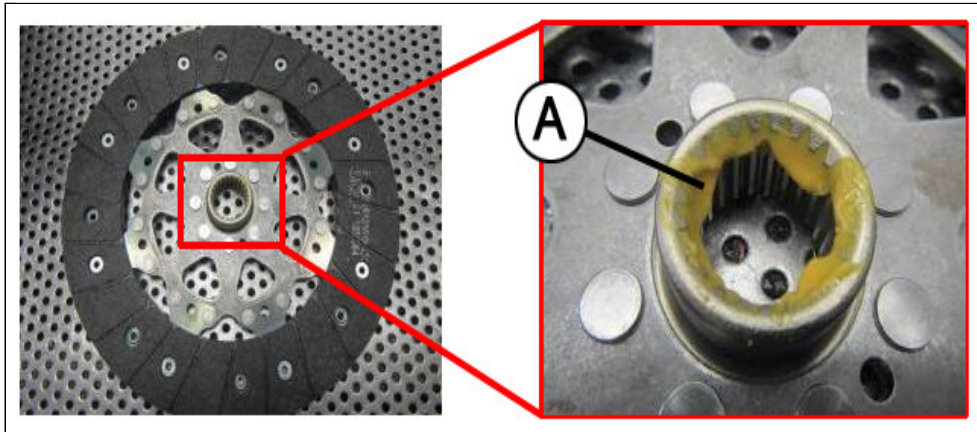
Multi-Model - Clutch Slippage or Smell after Clutch Disc Replacement

Some customers may complain about a clutch slippage or a burn smell after a clutch disc replacement. This may be caused by excessive grease application on the clutch disc splines during a previous repair.

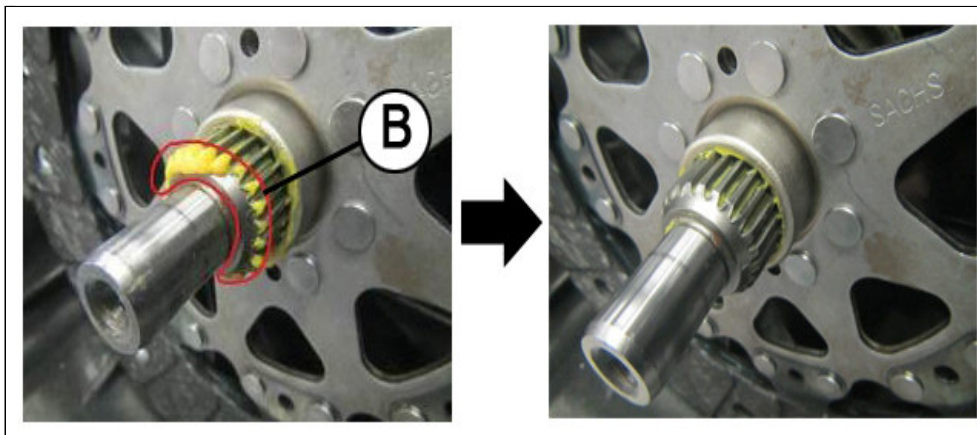
Excessive grease amount at the spline may lead to grease spatter to the clutch disc. This may cause a burn smell and/or slippage of the clutch.

Clutch Disc Spline Grease Application Procedure

1. Clean the splines on the main drive gear shaft and the clutch disc.
2. Apply grease to the engine side rim (A) of the spline on the clutch disc as shown below.



3. Insert the clutch disc to the main drive gear shaft and remove excessive grease (B).



4. Slide the clutch disc a few times to spread the grease.

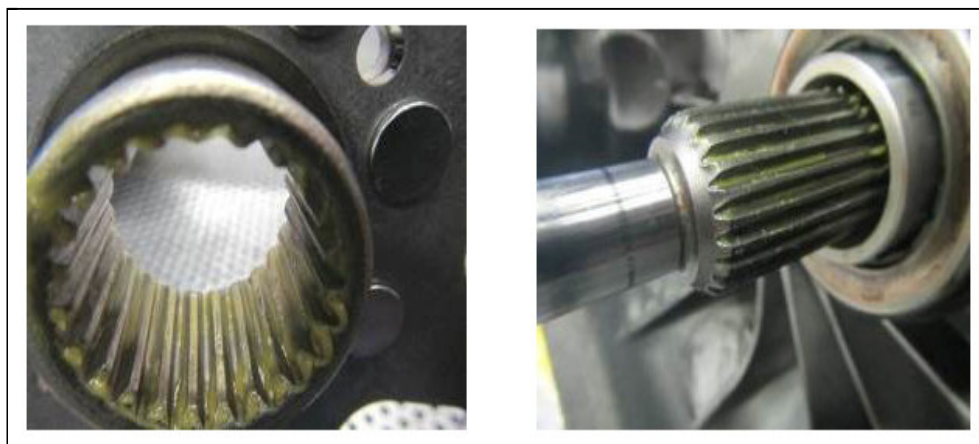


5. Remove the clutch disc from the main drive gear shaft and remove excess grease (C).



6. Install the clutch assembly. Refer to MS3 Workshop Manual CLUTCH UNIT REMOVAL/INSTALLATION. No additional grease to the spline is needed when installing the clutch unit.

NOTE: Below is an example of a proper thin layer of grease application.



An editorial board comprised of MNAO service staff members generates, collects, and verifies information for this publication. © 2016 Mazda M America, Inc.

To contribute repair tip ideas, send an e-mail to mtips@mazdausa.com. If we select your repair tip, you will receive \$50 value in Reward Performance by Mazda (RPM) points for your efforts. All contributions become property of MNAO, which assumes permission to publish them without further consideration.

