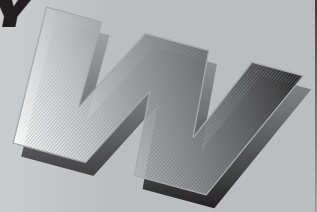




WARRANTY CAMPAIGN

ROADSTER WARRANTY Bulletin



CAUTION: All involved customers must be notified, all involved units must be corrected as per instructions herein.

Campaign no.: 2011-0017
2012-0007

June 19th, 2012

Subject: **TO BE PERFORMED ON REGISTERED (SOLD) VEHICLES**

No. **2012-10**

REVISION 1
January 23, 2014

- 1- Updated Throttle Body Actuator Protection**
- 2- ECM and TCM Software Updates**
- 3- Middle Side Panel Grommet Replacement (2011 Models Only)**

▶TEXT(S) BETWEEN ARROWS IS (ARE) MODIFIED ELEMENT(S) TO THE PREVIOUS PUBLICATION.◀

YEAR	MODEL	MODEL NUMBER	SERIAL NUMBER
2011	Spyder RT SM5 and SE5	All	<u>▶ See attached list ◀</u>
2012			

PROBLEM

Problem 1

In some conditions, the throttle body actuator could get damaged, which could lead to fault codes or limp home mode when trying to start the engine.

Problem 2

Too frequent warning display in cluster due to sensitive calibration.

Problem 3

On some 2011 vehicles, on which *2011-8 OR 2011-13 WARRANTY CAMPAIGNS* has not been performed, one of the middle side panels rubber grommets might fall off after multiple removal and installation of the panel.

SOLUTION

▶Solution 1 and 2◀

▶Update ECM and TCM with the latest softwares and calibrations.

IMPORTANT: This update must be done even if *WARRANTY CAMPAIGNS 2011-0008, 2011-0013 OR 2012-0004* have already been performed.

For more detailed explanations on the content of these updates, please refer to the *BRP KNOWLEDGE CENTER*. In the **keyword(s)** field, enter either the article number OR the title between quotes:

<u>ARTICLE NUMBER</u>	<u>TITLE</u>
<u>31881</u>	<u>"Roadster TCM MY13 Calibration update"</u>
<u>31882</u>	<u>"Roadster June 2012 ECM update"◀</u>

Solution 3

Install a NEW improved grommet where applicable.

REQUIRED PARTS

Required parts for Procedure 1 and 2

► [The following B.U.D.S. version is required and available on KNOWLEDGE CENTER.](#)

[B.U.D.S. - R3.5.1 \(or newer\) for Roadster - Single File](#)

1. [Click on "Advanced Search".](#)
2. [Select "Diagnostic Software".](#)
3. [In the Keyword\(s\) field, type in "R3.5.1".](#)
4. ["SEARCH".](#)
5. [Identify and download proper file.](#)

[Please note that you can also type in the keywords "R3.5.1" directly without going in the "Advanced Search".](#) ◀

Required parts for Procedure 3

PART	PART NUMBER	QUANTITY
Rubber grommet	705 003 264	2

NOTE: Order parts only if vehicle has to be repaired.

PROCEDURE 1 AND 2

Overview

The following will have to be done:

- Preparation
- ECM software update
- TCM software update
- Updates validation
- ECM initialization
- Clearing faults

Two (2) update (reflash) operations will be done as per table.

MODULE	APPROXIMATE TIME FOR THE REFLASH
A) ECM software update	4-6 minutes
B) TCM software update	1-2 minutes

IMPORTANT: In case of problem updating a module, please consult the *BRP KNOWLEDGE CENTER*.

Preparation

Computer and Vehicle Preparation

NOTICE

Continuous power to the computer and to the vehicle is mandatory during this operation or damage to a module could occur.

Be sure to disable the computer screen saver.

If using a portable computer, be sure to provide a continuous supply of electrical power by connecting it to a wall outlet.

To ensure there is enough power to the vehicle electronic modules to complete the software updates, use a portable power pack.

NEVER use a battery charger instead of portable power pack. The battery charger may cause electrical noise causing problems during the update.

These software updates of the vehicle modules will take some time to complete and MUST NOT be interrupted.

Although computer screen may blank or may seem to freeze for a while, do NOT interrupt B.U.D.S. to allow updates to be completed. Do not touch the PC.

Although the cluster will blank, do NOT interrupt B.U.D.S. to allow updates to be completed. Do not touch the vehicle.

1. [► Place the vehicle on a level surface.](#)
2. [Install 4 wheel chocks \(2 on each front wheel\) to prevent any movements of the vehicle during the procedure.](#)



WHEEL CHOCK INSTALLATION, EACH FRONT WHEEL

3. Set transmission to NEUTRAL.

NOTE: On SE5 models, the engine may need to be started to set transmission to "N". When done, stop engine.

4. RELEASE the parking brake.

5. Ensure trailer mode is deactivated (if applicable). Refer to *OPERATOR'S GUIDE*.

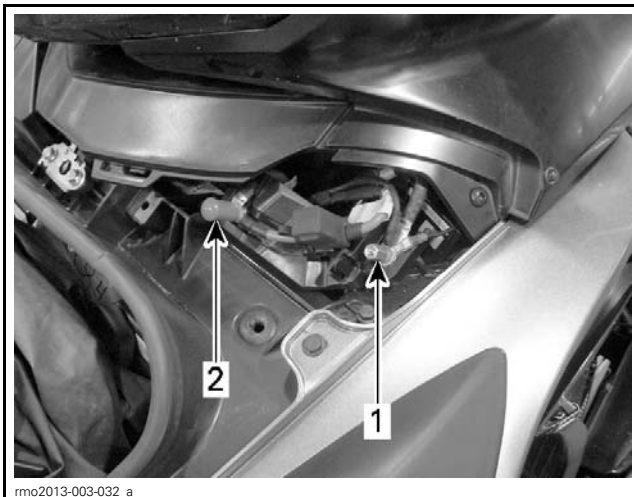
6. Ensure the vehicle battery is fully charged.

7. Connect a portable power pack (fully charged) to the vehicle battery.

NOTE: Depending on vehicle model and year of production, the portable power pack can be connected to the battery at one of the following three locations.



PORTABLE POWER PACK






CONNECTION AT JUMP START POSTS IN LH SERVICE CENTER, UNDER FRONT STORAGE COMPARTMENT COVER

- 1. NEGATIVE (-) post
- 2. POSITIVE (+) post ◀

B.U.D.S. Connections

1. Connect MPI before starting B.U.D.S. to ensure proper operation. Refer to the proper *SHOP MANUAL* for details:
 - Section 03: *ELECTRONIC MANAGEMENT SYSTEMS*
 - Subsection 03: *COMMUNICATION TOOLS AND B.U.D.S.*

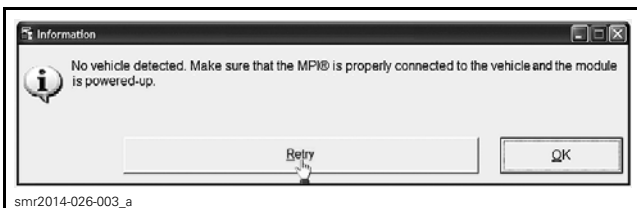
MANDATORY TOOLS	
A personal computer (laptop or desktop)	
MPI-2 INTERFACE CARD (P/N 529 036 018)	
MPI-2 DIAGNOSTIC CABLE (P/N 710 000 851)	
OPTIONAL TOOL	
Extension cable available at electronic retail outlets. Do not exceed 7.5 m (25 ft)	

2. Start B.U.D.S. and logon.
3. Turn ignition key ON.



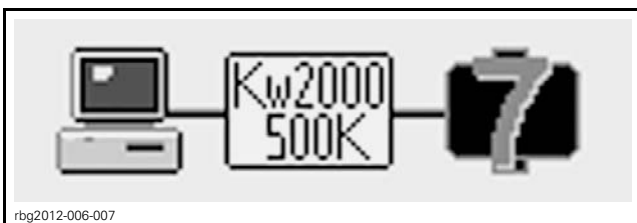
TYPICAL - IGNITION KEY ON

NOTE: If the following message does not automatically vanish, click the button: **Retry**.



RETRY BUTTON

Compare number of modules shown in B.U.D.S. with following table.

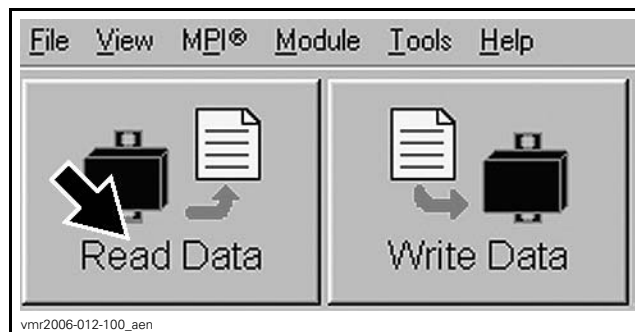


EXAMPLE

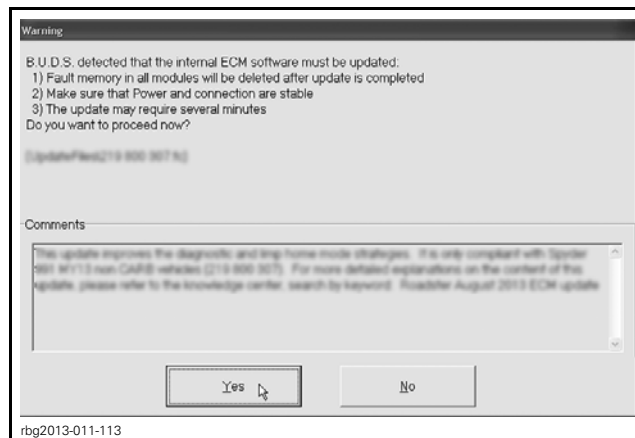
MODEL	NUMBER OF MODULES CONNECTED
SM5	6
SE5	7

A) ECM Software Update

1. Click on Read Data.



2. When the following message appears, click "Yes" to start the update.



3. ▶ If the following message appears, then there is "Active" or "Occurred" fault(s).

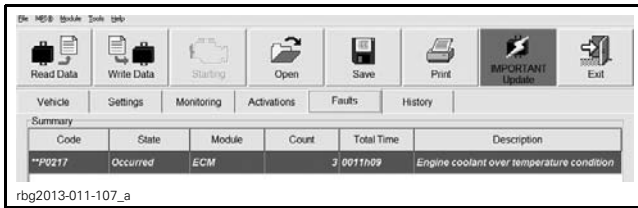


3.1 Clicking "OK" will prompt you to the FAULT screen.

3.2 Before proceeding with the update, fault codes relating to a current customer complain should be repaired; all other fault codes should be cleared.

3.3 Click on "IMPORTANT Update" to launch the update process.

NOTE: The following top menu button will continue to flash until the ECM software update is performed.



ECM SOFTWARE IMPORTANT UPDATE REMINDER

4. If any of the following fault codes has the "Occurred" or "Active" status, replace the throttle body assembly.

P1610	P1611
P1614	P1615

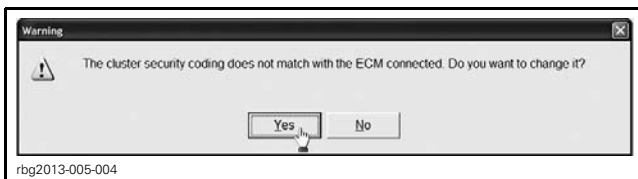
- 4.1 Refer to 2010-2011 SHOP MANUAL - SPYDER RT for repair procedure:
 - = Section 04: FUEL SYSTEM
 - = Subsection 01: ELECTRONIC FUEL INJECTION (EFI) ◀

NOTICE While the ECM is being updated, an hour glass will appear on the computer. The computer screen and cluster might also go blank. DO NOT TOUCH ANYTHING (PC and vehicle) until the following message appears. Then, click the "OK" button.



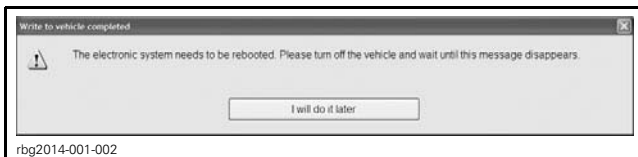
SUCCESSFUL ECM UPDATE CONFIRMATION - CLICK OK

5. When the following message appears, click "Yes".



CLUSTER SECURITY MATCHING REQUEST - CLICK YES

- 6. When the following message appears:
 - 6.1 Turn ignition key to OFF.
 - 6.2 Wait until the message vanishes.



7. When the following message appears, turn ignition key to ON then click the "OK" button.



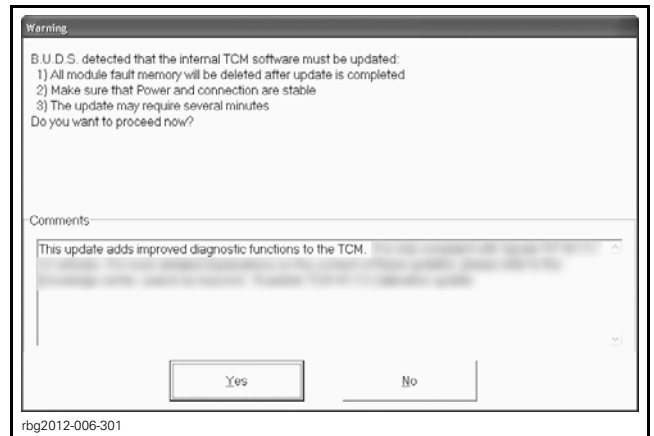
8. The ECM software update is completed.

TCM Update

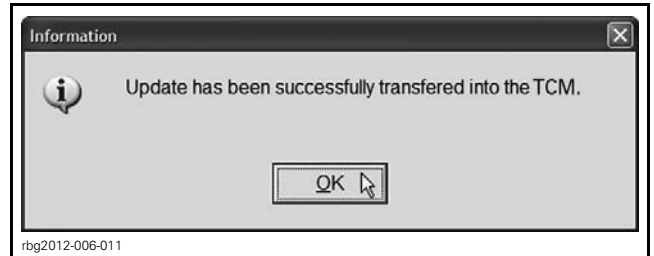
SE5 Models Only

B) TCM Software Update

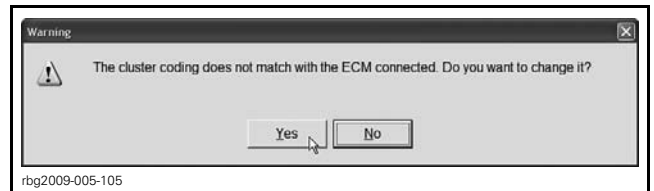
1. When the following message appears, click "Yes" to start the TCM update.



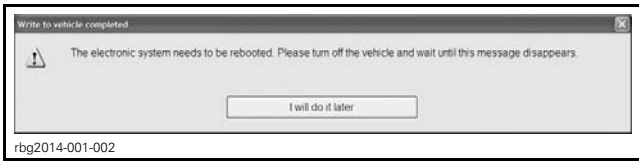
2. When the following message appears, click "OK".



3. When the following message appear, click "Yes".



- 4. When the following message appears:
 - 4.1 Turn ignition key to OFF.
 - 4.2 Wait until the message vanishes.



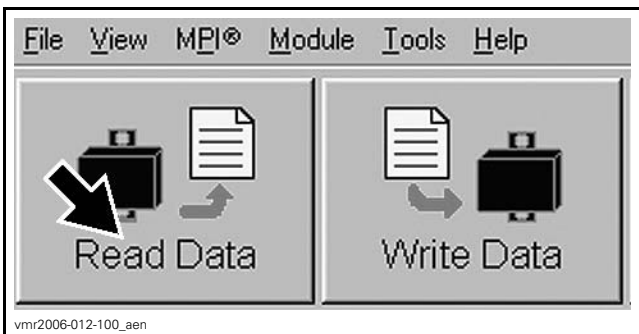
5. When the following message appears, turn ignition key to ON then click the "OK" button.



Update Validation

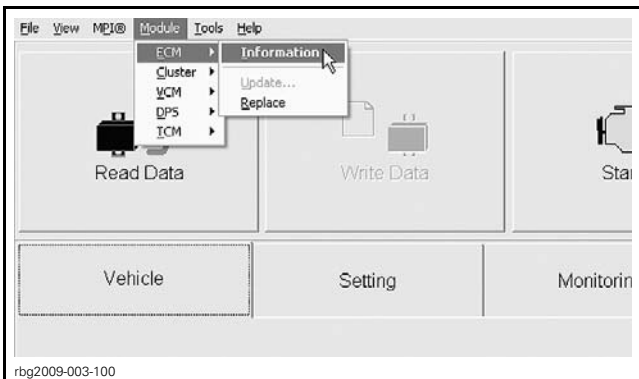
ECM

1. Click on Read Data button.



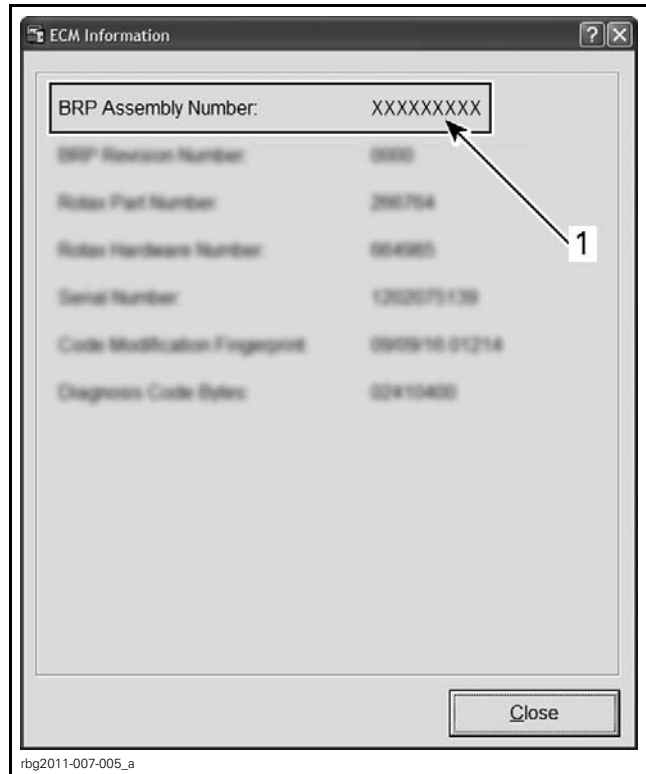
READ DATA BUTTON

2. Check if the update has been successfully done by selecting:



MODULE, ECM, INFORMATION

3. Look at the "BRP Assembly Number", compare with list in table.



rbg2011-007-005_a

TYPICAL

1. BRP Assembly number

▶ ECM INFORMATION ◀			
BRP assembly number	MY 2011 - 2012 non- CARB	SE5	420 666 567
		SM5	420 666 565
	MY 2012 CARB	SE5	420 666 498
		SM5	420 666 496

4. If any number in the table is found in B.U.D.S., then the update was successful.

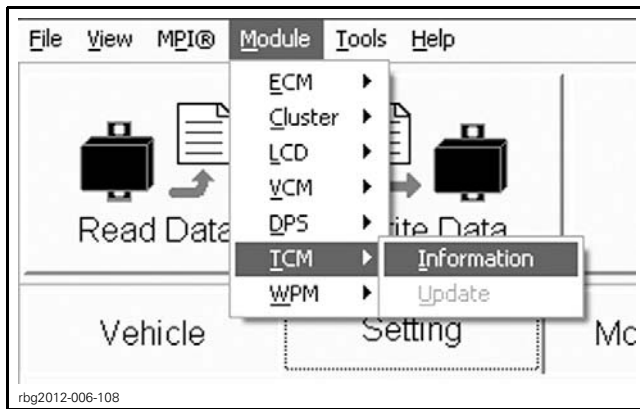
5. If a wrong number is found, repeat the update procedure.

TCM

SE5 Models Only

1. Check if the update has been successfully done by selecting:

- Module drop down list
- TCM
- Information



1. TCM module information

2. Look at the "Supplier Software Number" and the "BRP Calibration Number".



TCM INFORMATION

TCM INFORMATION	
INFORMATION ITEM	VALUE
Supplier Software Number	S01212D05
BRP Calibration Number	710003389

3. If "Supplier Software Number" **AND** the "BRP Calibration Number" in the table are found in B.U.D.S., the update was successful.

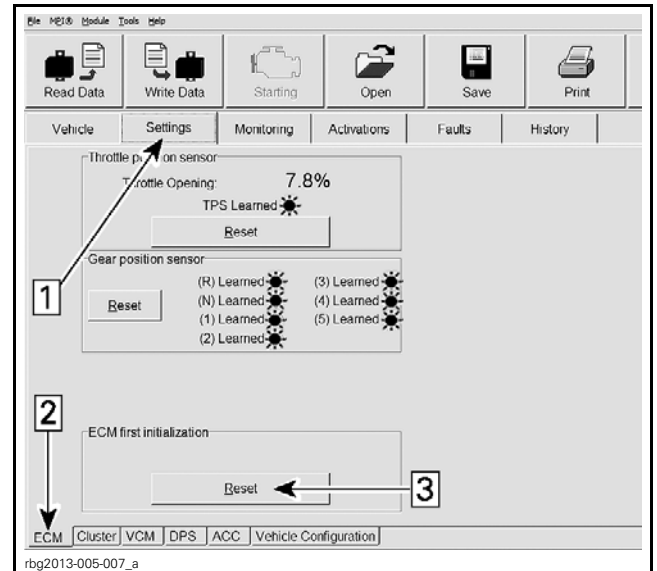
4. If a wrong number is found, repeat the update procedure.

► ECM Initialization ◀

► **IMPORTANT:** Do not activate anything on the vehicle while performing a module reset.

ECM First Initialization

1. In B.U.D.S., click the items in the illustrated order.



Step 1: [Setting tab](#)

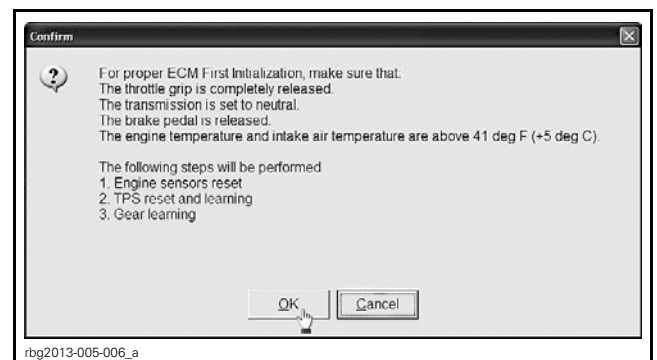
Step 2: [ECM tab](#)

Step 3: [Reset \(ECM First Initialization\)](#)

2. When the following message appears:

2.1 [Follow on screen instructions.](#)

2.2 [Click "OK".](#)

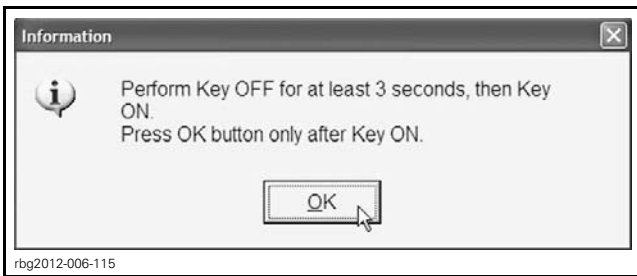


[CLICK OK](#)

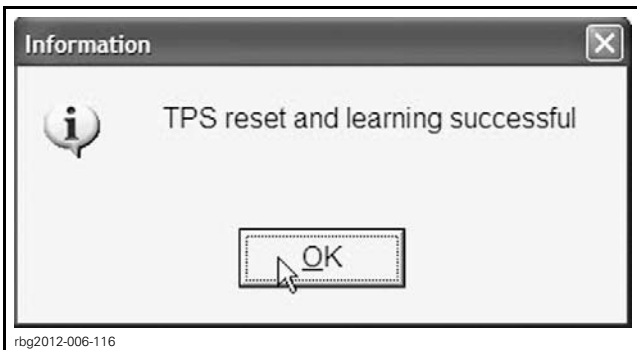
3. When the following message appears:

3.1 [Follow on screen instructions.](#)

3.2 [Click the "OK" button.](#)



4. When the following message appears, click the "OK" button.

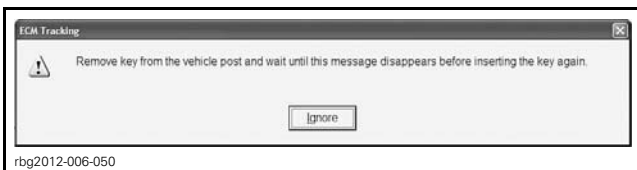


CLICK "OK"

5. When the following message appears:

5.1 Turn ignition key to OFF.

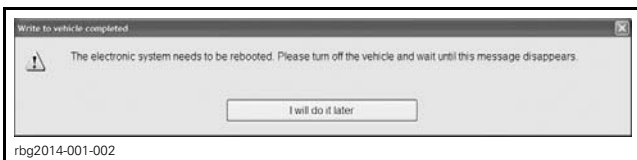
5.2 Wait until the message vanishes.



6. When the following message appears:

6.1 Turn ignition key to ON.

6.2 Wait until the message vanishes.

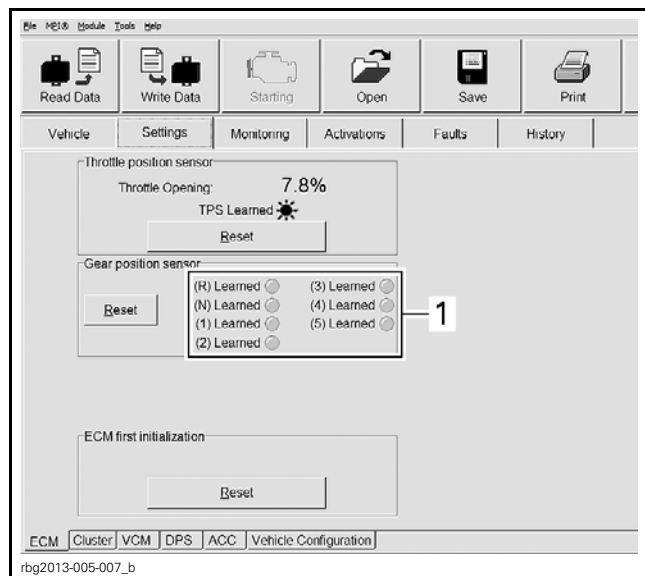


7. When the following message appears, click "OK".



CLICK "OK"

8. Ensure all the gear LEDs are OFF in B.U.D.S.



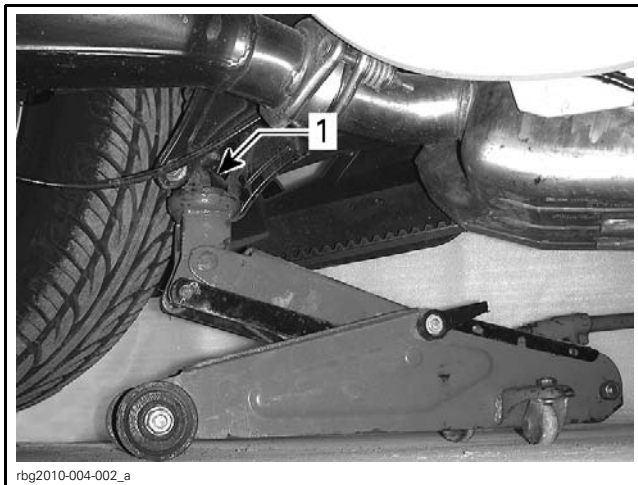
GEAR POSITION SENSOR LEDs

1. All the gear LEDs OFF

GBPS Learning

1. Position a floor jack under the lower portion of the rear shock absorber and lift the rear of vehicle until the rear wheel is off the ground.

NOTICE The floor jack must be positioned so that it cups the lower portion of the rear shock absorber.



1. Lower portion of shock absorber

⚠ WARNING

Before starting engine, ensure the rear tire is well off the ground and cannot come into contact with any obstacle (ground, jack stand, etc.). Keep hands, tools, feet and clothing clear of rotating parts (rear wheel assembly, drive belt). Ensure no one is standing in close proximity to the vehicle.

2. Start engine.

3. Run transmission through all gears (N, R, 1-2-3-4-5 and back to N) waiting until its LED turns green (in B.U.D.S.) before changing gear.

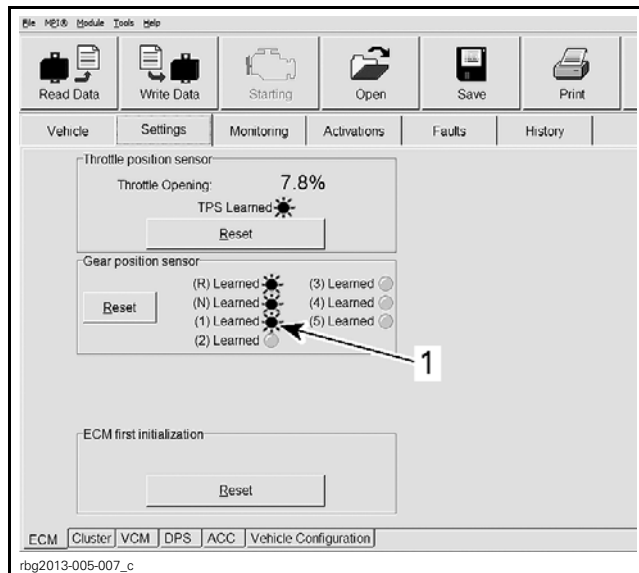
NOTE: On SM5 models, the clutch must be fully released for each gear.

NOTICE Apply brake to stop wheel before shifting from reverse to forward.

NOTE: Engine speed above 3000 RPM is required to shift forward gears.

CAUTION Do not exceed 3800 RPM.

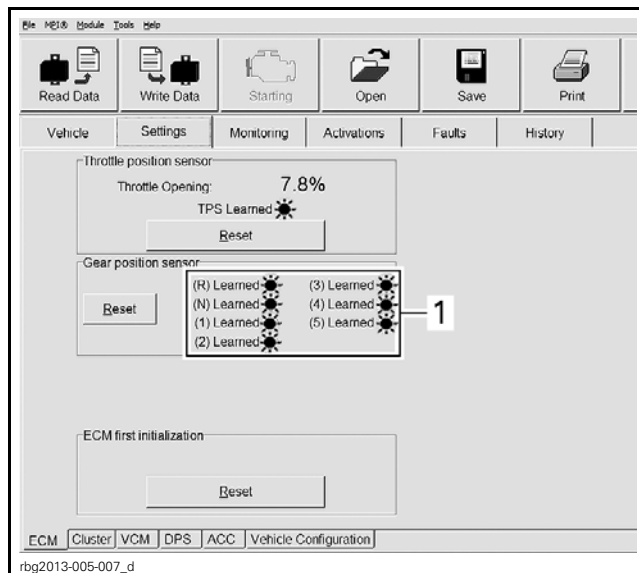
NOTE: During the GBPS learning procedure, the cluster may show an orange screen and numerous indicator lights may come on (CHECK ENG, VSS, ABS, LIMP HOME, etc).



GEAR POSITION SENSOR LEARNING LEDS

1. Wait until the gear LED turns green (learned) before shifting

4. All gear position sensor LEDs must be green in B.U.D.S. to confirm the GBPS learning is completed.



ALL GEARS LEARNED

1. All gear position sensor LEDs ON

5. Turn ignition key OFF.

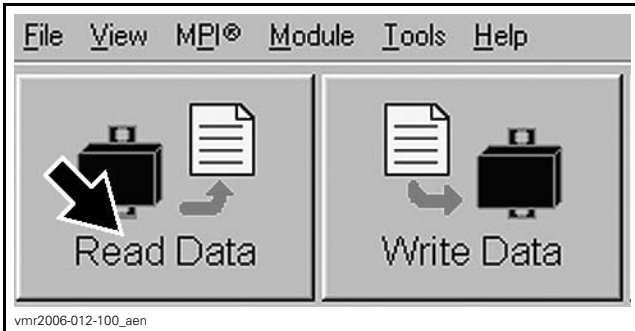
6. Wait for the following message to appear.



7. Turn the ignition key ON and wait until message vanishes. ◀

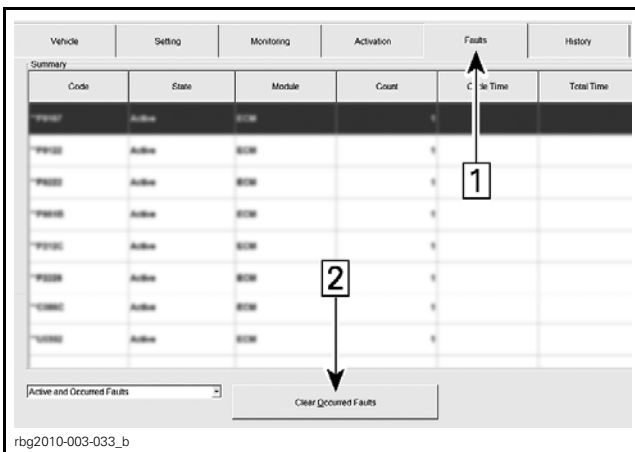
► Clearing Faults ◀

1. In B.U.D.S., click on Read Data.



READ DATA BUTTON

2. Click the items in the illustrated order.

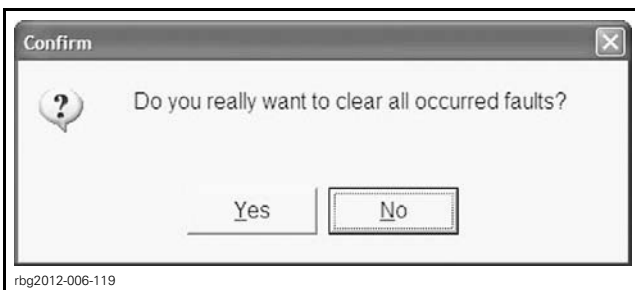


CLEARING FAULTS

Step 1: Faults

Step 2: Click "Clear Occurred Faults" button

3. When the following message appears, click the "Yes" button.



CONFIRM CLEAR FAULTS REQUEST - YES

NOTE: To clear all faults, it may be necessary turn the ignition key OFF, wait a few seconds, turn the ignition key back ON and activate the **Clear Occurred Faults** button once more.

4. Turn ignition key OFF.

5. When the following message appears, turn ignition key ON and wait until the message vanishes.



6. Click on the **Clear Occurred Faults** button again and ensure all faults are cleared.

7. Turn ignition key OFF.

NOTICE To avoid potential vehicle damage, it is very important to turn ignition key off **BEFORE** exiting B.U.D.S. or unplugging the MPI-2 diagnostic cable from the vehicle.

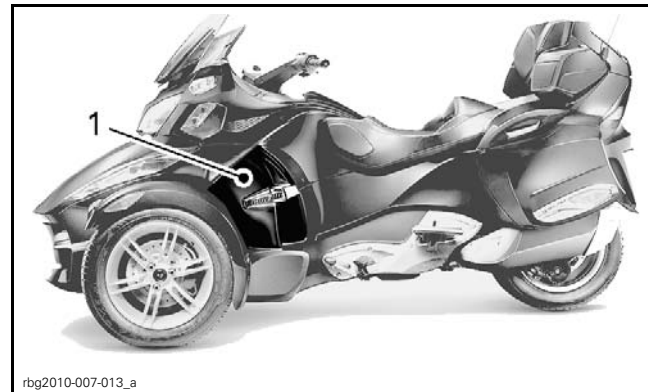
8. Unplug MPI-2 diagnostic cable from vehicle.

9. Remove floor jack from under vehicle. ◀

PROCEDURE 3

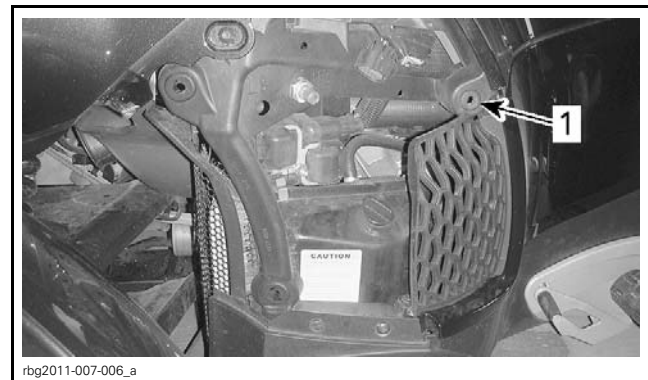
NOTE: To be carried out only on 2011 vehicles on which *WARRANTY CAMPAIGN 2011-0008 OR 2011-13* has not been done.

1. Remove the middle side panel.

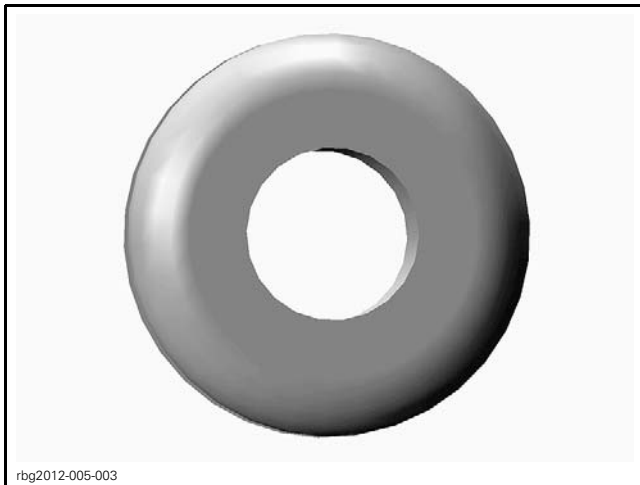


1. Middle side panel

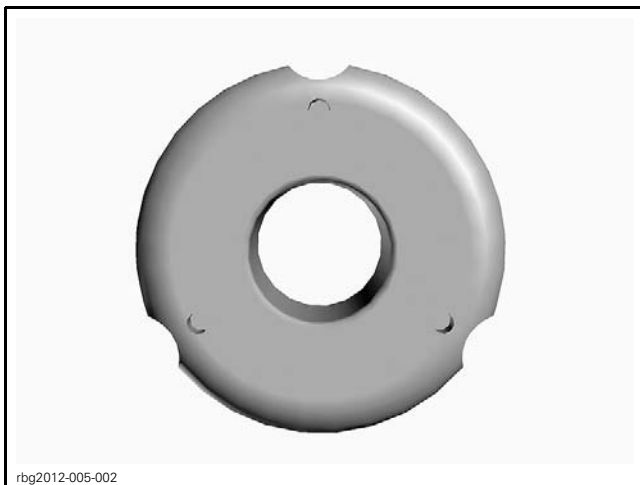
2. Identify grommet type.



LH SIDE OF VEHICLE SHOWN
1. Check this grommet ONLY



OLD TYPE - SMOOTH OUTER EDGE



NEW TYPE - NOTCHES ON THE OUTER EDGE AND MOLDED STEEL WASHER

GROMMET TYPE	ACTION
Old Grommet type	Replace by (P/N 705 003 264)
New Grommet type	No action required

- If required, remove the grommet using a flat screwdriver.
- Scrape off any remaining grommet and glue residue from area where grommet was glued.
- Install the new grommet.
- Repeat steps on the other side of the vehicle.

WARRANTY

Submit a campaign claim using the following information. This will credit labor for the software update.

If applicable, claim the throttle body assembly under normal warranty. The B.U.D.S. .mpem file will be requested when processing the warranty claim.

If required, claim middle side grommets under normal warranty type claim. No labour will be paid as it is already included with the campaign claim.

2011 Models

REPAIR (ECM AND TCM SOFTWARE UPDATES)	
Campaign Number	2011-0017
Claim Type	Campaign Claim
Action	Repair
Flat Rate Time	0.3hour

Click in the **Repair** check box.



2012 Models

REPAIR (ECM AND TCM SOFTWARE UPDATES)	
Campaign Number	2012-0007
Claim Type	Campaign Claim
Action	Repair
Flat Rate Time	0.3 hour

Click in the **Repair** check box.



► SERIAL NUMBERS LISTING OF 2011 INVOLVED VEHICLES ◀

Model: A3BA

000820
000826
000828
000833
000836
000839
From 000843 to 000844
000850
From 000974 to 000975
000979
000982
000985
000987
000989
000994
001007
001015
001023
001025
001029
001031
001118
From 001120 to 001121
001126
001137
001139
001396
From 001399 to 001401
001403
001405
001409
001415
From 001419 to 001420
From 001424 to 001426
From 001601 to 001603
001605
001608
From 001698 to 001701
001703
001765
001769
001771
001776
001862
001865
001975
001977
From 002079 to 002081
From 002083 to 002085
From 002087 to 002088
002149

Model: A3BB

From 000229 to 000233
000237
From 000857 to 000858
000862
From 000867 to 000869
002179
From 002181 to 002183

Model: A4BA

From 000007 to 000008
000013
000016
From 000020 to 000021
000029
000033
From 000038 to 000039
000043
000046
000088
000090
From 000093 to 000094
From 000102 to 000104
000107
000118
From 000120 to 000122
From 000126 to 000127
From 000170 to 000172
From 000175 to 000176
From 000180 to 000181
000186
000188
From 000192 to 000199
000204
000207
000215
From 000277 to 000278
000283
000292
From 000294 to 000295
000298
From 000301 to 000303
000305
000309
000311
000314
000321
From 000328 to 000329
000335
000337
000340
From 000343 to 000344
000348
000354

Model: A4BA (cont'd)

000357
000360
From 000362 to 000363
000391
000394
From 000404 to 000405
From 000408 to 000409
000411
000418
From 000422 to 000424
000427
000429
From 000431 to 000432
000445
000449
000451
000454
000457
000461
From 000466 to 000467
000469
From 000474 to 000475
From 000477 to 000478
000480
000488
000511
000514
From 000517 to 000521
000525
000541
000543
000550
000594
000598
000610
000662
000664
000670
000678
000682
000684
000689
000696
000745
000760
000763
000768
000770
000773
000779
000794
From 000796 to 000797
From 000810 to 000811

Model: A4BA (cont'd)

From 000813 to 000814
000816
000821
000824
000827
From 000829 to 000834
From 000836 to 000837
000843
000847
000901
000904
From 000906 to 000908
From 000912 to 000913
000917
000923
000925
000927
From 000929 to 000930
000935
000997
000999
001013
001015
From 001018 to 001021
001023
001026
From 001028 to 001029
001060
001062
From 001064 to 001065
001083
001086
From 001088 to 001091
001105
001107
001112
001114
001122
From 001125 to 001126
From 001132 to 001133
001135
From 001137 to 001138
001147
001149
001151
001154
001158
001172
001177
001180
001187

Model: A4BB

From 000133 to 000134
000138
From 000140 to 000141

Model: A4BB (cont'd)

000144
000217
From 000219 to 000224
From 000226 to 000228
000256
From 000258 to 000259
000262
From 000265 to 000266
000268
000270
From 000274 to 000276
000373
From 000375 to 000377
From 000379 to 000380
From 000383 to 000384
000494
000496
000500
000502
000504
From 000557 to 000558
From 000565 to 000566
From 000571 to 000572
000574
000615
000624
000640
From 000642 to 000643
000645
000648
From 000651 to 000652
000659
000725
From 000727 to 000729
000731
000853
From 000855 to 000856
000863
000939
From 000942 to 000943
000949
From 000951 to 000952
From 000954 to 000955
From 000957 to 000958
000960
000964
From 000967 to 000969
From 000971 to 000972
From 001033 to 001034
001039
001042
001098
001161
From 001163 to 001165
001168
001170

Model: A4BB (cont'd)

001189
001191
From 001195 to 001196
001198
001202
001205
001208
From 001215 to 001216
001219
001224

Model: A4BC

000005
000007
000013
000030
000035
000040
From 000047 to 000048
000051
From 000054 to 000055
From 000057 to 000058
000060
From 000062 to 000063
000068
From 000072 to 000073
000159
000161
000172
000174
000184
000186
000190
000193
From 000272 to 000273
From 000282 to 000283
From 000286 to 000287
000291
000294
000297
000301
000378
000380
000388
000391
000400
000403
000408
000411
000415
000422
000432
000434
From 000438 to 000439
000443
000447

Model: A4BC (cont'd)
000450
000454
From 000456 to 000458
000491
From 000493 to 000494
000496
000503
From 000511 to 000513
000515
From 000522 to 000524
From 000617 to 000619
From 000622 to 000624
000627
000639
From 000641 to 000642
000644
000649
000652
000657
000659
000662
000723
000730
From 000759 to 000760
From 000765 to 000766
000768
From 000772 to 000773
000777
000812
000815
000818
000836
000842
000857
000859
000862
From 000871 to 000872
From 000877 to 000879
000881
000883
000886
From 000888 to 000890
From 000952 to 000953
000960
000963
From 000972 to 000973
001002
001007
001010
001016
001018
001021
001032
001036
001044
001098

Model: A4BC (cont'd)
From 001102 to 001103
001108
From 001113 to 001114
001118
From 001122 to 001123
001127
001130
001134
001139
001142
From 001212 to 001214
001224
001227
From 001230 to 001231
001235
001237
From 001280 to 001282
From 001288 to 001292
From 001298 to 001303
001306
001308
From 001408 to 001409
001415
001418
From 001420 to 001421
001423
001431
001435
001439
001442
001467
001478
001482
001484
001487
001513
001518
001524
001527
001530

Model: A4BD
From 000016 to 000018
000021
000023
000025
From 000135 to 000137
From 000140 to 000141
000143
000145
From 000148 to 000149
From 000152 to 000153
000158
From 000255 to 000258
000260
000264

Model: A4BD (cont'd)
000558
000560
000566
From 000568 to 000569
From 000571 to 000572
000711
From 000713 to 000714
000717
000722
001149
001267
From 001269 to 001271

Model: A4BE
000013
000019
000024
From 000026 to 000027
000031
000036
000043
000047
000049
000053
000056
From 000059 to 000060
000068
000071
000073
000077
000086
000091
000093
000098
000103
000107
000109
000113
000119
000337
000341
From 000345 to 000346
000348
From 000358 to 000359
From 000366 to 000367
000371
000375
000379
000381
From 000389 to 000390
000393
000395
000397
000401
From 000405 to 000406
000577

Model: A4BE (cont'd)

000584
000606
000608
000610
000615
000617
000621
000623
From 000625 to 000626
000628
From 000630 to 000632
000635
From 000641 to 000642
000645
From 000649 to 000651
000653
000657
000764
000768
000770
From 000773 to 000774
000776
000778
000781
From 000783 to 000784
000787
000790
From 000794 to 000796
000804
000930
From 000941 to 000942
000948
000954
From 000957 to 000958
From 001082 to 001083
001086
001094
From 001096 to 001098
From 001103 to 001109
From 001113 to 001114
001177
001180
001185
001225
001229
001233
001274
001346
001350
001356
From 001359 to 001360
001362
001368
001371
001429
001431

Model: A4BE (cont'd)

From 001434 to 001435
001439
001441
001443
001449
001548
001550
From 001553 to 001556
001562
001570
001576
From 001578 to 001579
001581
001584
001634
001637
From 001642 to 001643
From 001730 to 001732
001736
001739
001744
From 001746 to 001751
001759
From 001826 to 001827
001830
001838
001844
001860
001923
From 001927 to 001928
From 001948 to 001949
From 001953 to 001954
From 001996 to 001998
From 002001 to 002002
002004
002012
From 002014 to 002017
From 002022 to 002024
From 002026 to 002027
002040
002090
002095
002099
002104
002113
002115
002117
002126
002128
002157
002163
002170
From 002175 to 002176

Model: A4BF
From 000002 to 000005

Model: A4BF (cont'd)

000011
From 000145 to 000147
From 000149 to 000151
From 000156 to 000157
000161
000164
000168
000315
000317
000320
From 000322 to 000324
000326
000329
From 000331 to 000334
000531
From 000533 to 000534
From 000536 to 000537
From 000541 to 000543
000545
000549
From 000551 to 000552
000554
From 000558 to 000559
000564
000567
From 000570 to 000572
000575
000903
000906
000922
001069
001073
001076
001155
001164
001172
001202
001206
001211
001286
001294
001296
001300
001304
001514
001517
From 001520 to 001522
001524
001529
001531
001533
001536
001645
001649
001652
From 001813 to 001814

Model: A4BF (cont'd)
From 001816 to 001817
001820
001822
001824
From 002192 to 002195
002197
002202

Model: A4BG

000002
000036
000038
From 000040 to 000041
000058
000060
000064
000066
000072
000077
000079
From 000085 to 000087
From 000096 to 000097
000101
From 000110 to 000111
000114
From 000116 to 000118
000123
000131
000139
000143
000149
000154
From 000161 to 000162
000165
000167
From 000246 to 000249
000251
000253
000258
000264
From 000269 to 000270
000273
000275
000278
000281
000284
000286
000290
000296
000299
000302
000304
000307
000309
000311
000320

Model: A4BG (cont'd)
From 000330 to 000331
From 000334 to 000337
000387
000395
000397
000403
From 000407 to 000408
000411
000415
000417
From 000422 to 000423
000425
000428
From 000433 to 000435
From 000437 to 000438
000450
000454
From 000457 to 000458
000461
000464
000473
000480
000484
000486
000545
000551
From 000561 to 000562
000566
000578
From 000631 to 000632
000638
From 000644 to 000646
From 000648 to 000651
000656
000664
000668
From 000705 to 000707
000710
000717
From 000719 to 000720
000724
000728
000730
From 000732 to 000733
000771
000775
000778
From 000783 to 000784
000788
000790
From 000793 to 000794
000797
000802
000807
From 000809 to 000812
000814

Model: A4BG (cont'd)
From 000817 to 000818
000821
From 000823 to 000826
000833
From 000835 to 000836
From 000856 to 000857
000860
000866
000873
000875
000882
000905
From 000909 to 000910
000914
From 000917 to 000920
000925
000935
000937
000943
000946
From 000961 to 000962
000968
000970
From 000973 to 000975
000979
000982
000993
001001
001003
001007
001011
001014
001017
001021
001023
001028
001032
001034
From 001049 to 001050
001054
001057
001066
001069
001072
001074
From 001076 to 001077

Model: A4BH

000007
000012
000016
000018
000020
000025
000231
000235

Model: A4BH (cont'd)
From 000241 to 000242
From 000375 to 000376
000381
From 000384 to 000385
From 000615 to 000619
000622
000625
000689
000691
From 000693 to 000696
From 000846 to 000847
000849
From 000852 to 000853
From 001084 to 001088
001091

Model: A7BA
From 000436 to 000438
From 000443 to 000444
000448
000450
From 000461 to 000463
From 000465 to 000466
000687
From 000690 to 000691
From 000699 to 000700
000702
From 000712 to 000713
From 000719 to 000720
001250
001257
From 001259 to 001260
From 001476 to 001477
001483
001487
001611
001613
001615
From 001618 to 001619
001621
From 001623 to 001624
001626
001874
001882

Model: A7BC
000235
000239
000242
000345
From 000350 to 000351
000355
From 000360 to 000361
000591
000594
000688
From 000696 to 000698

Model: A7BC (cont'd)
000797
000800
000804
000918
From 000925 to 000926
From 001173 to 001174
From 001178 to 001180
001186
From 001188 to 001190
001350
From 001354 to 001355
001358
001361
001370
001372
001376
001380

Model: A7BD
From 000076 to 000078
000080
From 000082 to 000084
000086
From 000090 to 000091
000096
000586

Model: A9BA
000249
From 000251 to 000252
000254
From 000257 to 000258
From 000262 to 000263
000269
From 000272 to 000274
000279
000288
000472
000478
000480
000483
From 000487 to 000488
000494
000496
000502
000726
000881
000883
000885
000887
From 000889 to 000890
000899
001033
From 001037 to 001038
From 001047 to 001049
From 001053 to 001054
001056

Model: A9BA (cont'd)
From 001141 to 001142
001147
001264
001267
001269
From 001310 to 001311
From 001314 to 001315
From 001317 to 001318
001322
From 001331 to 001332
001336
From 001341 to 001342
001344
From 001490 to 001492
001494
001497
From 001501 to 001502
001504
001705
001710
From 001712 to 001713
001719
001782
001786
001790
From 001796 to 001798
001800
001807
001810
001812
001887
001893
001900
001907
From 002041 to 002042
From 002045 to 002046
From 002051 to 002053
002062

Model: A9BB
000121
From 000124 to 000125
From 000127 to 000129
000131
000133
000135
000137
From 000143 to 000144
000297
From 000299 to 000300
From 000302 to 000303
000309
From 000510 to 000512
000515
From 000517 to 000519
From 000524 to 000525

Model: A9BB (cont'd)
000734
000736
From 000738 to 000739
000741
From 000745 to 000747
000750
000752
From 000755 to 000756
001058
001062
001064
001066
001213
001215
From 001219 to 001222
001585
From 001589 to 001591
From 001593 to 001594
001596

Model: A9BC

000196
000199
000205
000209
000215
From 000218 to 000219
000224
000305
From 000309 to 000310
000314
000319
000325
From 000327 to 000328
From 000333 to 000335
From 000337 to 000338
000461
000464
000537
000541
000547
From 000551 to 000554
000665
000671
000673
From 000675 to 000676
000680
From 000684 to 000686
000738
000740
000823
000827
000891
000895
From 000900 to 000901
000903

Model: A9BC (cont'd)

000911
000913
000979
From 000983 to 000986
001048
From 001050 to 001052
001055
From 001069 to 001070
001077
001079
001155
001159
001164
001241
001245
From 001247 to 001248
001313
From 001317 to 001318
From 001329 to 001331
From 001337 to 001339
001343
001444
001450
001454
001456
001460
001462

Model: B5BA

From 000050 to 000051
000053
000056
From 000064 to 000066
000068
000072
000074
000079
From 000082 to 000083
000146
From 000151 to 000152
000154
000168
000229
000232
From 000237 to 000238
000240
000251
000438
000440
000442
000534
From 000536 to 000537
From 000579 to 000580
000586
000632
From 000635 to 000636

Model: B5BA (cont'd)

000697
000699
From 000703 to 000704
From 000706 to 000707
000709
000720
000735
From 000738 to 000739
000782
000786
000788
From 000790 to 000792
From 000866 to 000867
000869
000872
From 000877 to 000878
000880
From 000882 to 000883
000889
000895
000898
000973
000976
From 000978 to 000980
From 000982 to 000983
From 001046 to 001047
From 001049 to 001050
001054
001056
001142

Model: B5BC

000100
From 000102 to 000103
000107
From 000109 to 000110
000118
000123
000129
From 000133 to 000134
From 000244 to 000245
000247
From 000250 to 000251
000363
000367
000370
000373
000473
000477
000479
000481
000603
From 000605 to 000606
000610
000614
000700

Model: B5BC (cont'd)

000705
000710
000751
000786
000791
From 000928 to 000929
000934
000939
000941
From 000943 to 000945
From 000949 to 000950
From 000987 to 000988
From 000992 to 000993
000995
From 001087 to 001088
001090
From 001093 to 001094
From 001195 to 001198
From 001200 to 001201
From 001251 to 001252
001255
001262
001384
001386
001392
001404
From 001505 to 001507

Model: B5BD

From 000171 to 000172
000175
From 000177 to 000179
From 000185 to 000186
000194
000205
000211
000218
000220
From 000222 to 000224
000410
000414
000416
From 000420 to 000421
From 000424 to 000426
From 000428 to 000429
000661
000663
From 000665 to 000666
000675
From 000677 to 000678
From 000680 to 000681
000806
000961
000964
000967
001189

Model: B5BD (cont'd)

From 001192 to 001193
001195
001198
001238
001240
From 001382 to 001383
001391
From 001455 to 001456
001458
001657
001668
001674
001676
001682
001685
001966
001968
From 002066 to 002068

Model: B5BE

000173
000178
From 000184 to 000185
From 000189 to 000190
000194
000200
000202
From 000206 to 000207
000217
000221
000226
From 000228 to 000229
From 000341 to 000342
From 000345 to 000346
000349
000360
From 000363 to 000364
From 000366 to 000367
From 000370 to 000371
000374
000497
000505
From 000510 to 000511
000515
000518
000527
000533
000539
000581
From 000583 to 000584
000586
000604
000608
000610
From 000613 to 000614
000678

Model: B5BE (cont'd)

000738
000742
000744
000752
000755
000759
From 000761 to 000762
000767
000770
000899
001037
From 001042 to 001043
001062
001064

Model: B9BA

000002
000007
From 000016 to 000019
000026
From 000030 to 000031
000045
000048
From 000050 to 000051
000057
From 000061 to 000062
000064
000070
000077
From 000082 to 000083
000086
000090
000092
000098
000100
From 000102 to 000103
From 000105 to 000106
000116
From 000125 to 000127
000129
From 000136 to 000138
From 000144 to 000145
From 000159 to 000160
000179
From 000185 to 000186
000194
000196
000204
000206
From 000208 to 000209
From 000214 to 000215
000220
000223
000229
From 000237 to 000238
From 000240 to 000242

Model: B9BA (cont'd)
000246
From 000249 to 000250
000255
000262
000264
000272
From 000275 to 000276
000388
000398
000400
From 000408 to 000409
000415
000420
From 000431 to 000432
000436
000439
000444
000446
000451
000455
000462
000464
000477
From 000483 to 000485
000491
From 000494 to 000495
From 000506 to 000507
000523
From 000525 to 000526
000528
From 000530 to 000531
000533
000535
000538
000542
000547
From 000554 to 000555
000558
000562
000564
000570
From 000575 to 000578
From 000582 to 000583
000585
000588
000591
From 000594 to 000596
000601
000605
000607
From 000613 to 000614
000621
From 000623 to 000624
000629
000631
000637

Model: B9BA (cont'd)
000640
000642
From 000644 to 000645
000647
000649
000652
000654
000656
000660
From 000671 to 000672
000683
000695
000704
From 000707 to 000708
000711
000713
000727
000736
000738
000741
000747
000750
000753
000756
000762
000773
000779
000782
000831
000846
000851
000854
From 000863 to 000864
000870
000875
From 000877 to 000881
000883
000888
000892
000895
000897
000902
000907
000911
000916
000918
000924
From 000930 to 000932
000935
000937
000942
000945
From 000947 to 000948
000958
000960
000965

Model: B9BA (cont'd)
000980
000983
From 000987 to 000988
000990
From 000996 to 000998
001000
001005
001008
001012
001017
001020
001025
001030
001033
001037
001047
001049
001051
001055
001090
001094
001096
001098
001100
001105
From 001108 to 001112
001118
001124
001127
From 001131 to 001132
001135
001137
001151
001159
From 001165 to 001167
From 001171 to 001173
From 001179 to 001180
001186
001194
001206
001208
001212
001216
001221
From 001224 to 001226
001239
001247
001250
001252
001255
From 001258 to 001259
001264
001270
001272
001277
001292

Model: B9BA (cont'd)

001295
001300
From 001302 to 001303
001306
From 001310 to 001311
001318
001320
From 001323 to 001324
001328
001333
From 001336 to 001337
001342
From 001346 to 001347
001350
001353
001361
001363
001368
From 001423 to 001424
001427
From 001429 to 001432
From 001434 to 001435
From 001437 to 001438
From 001443 to 001444
001451
001453
001457
From 001460 to 001461
From 001464 to 001465
001467
001469
From 001476 to 001477
001480
001482
001489
From 001494 to 001495
001501
001553
001558
001562
001564
001573
From 001580 to 001584
001586
From 001590 to 001591
001595
001599
001604
From 001607 to 001608
001610
001622
001626
001633
From 001637 to 001638
001641
001645

Model: B9BA (cont'd)

From 001647 to 001648
From 001654 to 001656
From 001709 to 001710
001712
From 001714 to 001715
001723
001732
001734
From 001738 to 001739
001750
From 001754 to 001755
001758
001760
001765
001767
001771
001774
From 001780 to 001782
001784
001840
001843
From 001845 to 001846
001849
001857
001859
001862
001868
001870
From 001876 to 001877
001879
From 001885 to 001886
From 001888 to 001889
001893
From 001905 to 001906
001908
001913
001932
001948
From 001957 to 001961
From 001965 to 001966
001984
001988
001996
From 001999 to 002000
002002
002013
From 002016 to 002017
From 002021 to 002024
002028
002030
002041
002049
002053
002055

Model: B9BB

000281
000287
000289
000294
000296
000302
From 000304 to 000305
From 000308 to 000312
000314
From 000317 to 000319
000322
000324
From 000329 to 000333
000335
From 000337 to 000339
From 000350 to 000351
From 000353 to 000355
000358
From 000360 to 000361
000364
From 000366 to 000367
From 000370 to 000371
From 000373 to 000375
From 000379 to 000380
000783
000786
000788
000791
000794
From 000796 to 000797
000799
From 000803 to 000806
From 000808 to 000812
From 000815 to 000820
000823
000825
000827
000830
001059
001062
001065
From 001072 to 001073
001076
From 001080 to 001081
001228
001230
001235
From 001371 to 001373
001375
From 001378 to 001379
001381
From 001384 to 001385
From 001387 to 001390
001392
From 001401 to 001402
001404

Model: B9BB (cont'd)
001406
From 001412 to 001413
001415
001418
001503
001505
From 001508 to 001509
001512
From 001514 to 001515
From 001518 to 001519
From 001521 to 001522
001527
001529
001532
001540
From 001542 to 001544
001550
001660
From 001662 to 001663
From 001669 to 001671
From 001675 to 001680
From 001684 to 001685
From 001687 to 001694
From 001696 to 001699
From 001702 to 001703
001791
001793
From 001797 to 001798
From 001800 to 001802
From 001804 to 001809
From 001814 to 001815
From 001818 to 001819
001821
From 001824 to 001825
001831
From 001836 to 001837
From 001972 to 001982
From 002064 to 002065
002067
002069
002071
002074
From 002078 to 002091
From 002093 to 002094
From 002096 to 002100
002102
002104
002111
002118
From 002121 to 002122
From 002128 to 002133

► SERIAL NUMBERS LISTING OF 2012 INVOLVED VEHICLES ◀

Model: A3CA

000144
 From 000302 to 000304
 000511
 000517
 000593
 000596
 000600
 000603
 From 000612 to 000613
 000747
 000750
 000754
 000760
 000763
 000765
 From 000776 to 000778
 000975
 000980
 000983
 001096
 001102
 From 001107 to 001108
 From 001371 to 001373
 001378
 001447
 001451
 From 001518 to 001519
 001521
 001634
 001639
 From 001642 to 001644
 001791
 001863
 001868
 002116
 002133

Model: A3CB

000147
 000155
 From 000482 to 000484
 From 000486 to 000487
 000489
 002391
 002393
 002396
 002399

Model: A3CC

000520
 000524

Model: A4CA

000029
 000035
 000043
 000047
 000053
 000056
 000058
 000066
 000072
 From 000076 to 000078
 From 000200 to 000201
 000203
 000211
 000219
 000222
 From 000225 to 000227
 000230
 000232
 000236
 000241
 000244
 000246
 000249
 000253
 From 000341 to 000344
 From 000349 to 000350
 000358
 000361
 000364
 000366
 000368
 000378
 000381
 000383
 000386
 From 000388 to 000389
 From 000425 to 000426
 000430
 From 000434 to 000435
 000443
 000447
 000452
 000455
 000473
 000478
 000658
 000661
 From 000668 to 000669
 From 000680 to 000681
 000826
 From 000833 to 000835
 From 000849 to 000850

Model: A4CA (cont'd)

000863
 From 000866 to 000868
 From 000882 to 000883
 001048
 001055
 001060
 001063
 001065
 001131
 001139
 001147
 001160
 001191
 001196
 001198
 001203
 001208
 001216
 From 001221 to 001222
 001227
 001239
 001242
 001248
 001313
 001319
 001322
 001332
 001336
 From 001342 to 001343
 001345
 001360
 001386
 001389
 001403
 001405
 From 001409 to 001410
 From 001454 to 001455
 001464
 001467
 001476
 001488
 001584
 001662
 001667
 001678
 001683
 001686
 001688
 001718
 001721
 001731
 001734
 001737

Model: A4CA (cont'd)

001741
001744
001826
001828
001834
From 001836 to 001838
001845
001855
001857
From 001907 to 001908
001910
001915
001920
001930
001934
001939
001987
001992
From 001995 to 001996
001998
002011
From 002020 to 002021
From 002033 to 002034
002044
From 002053 to 002054
002066
002073
002075
002174
002177
002180
002194
002196
002202
002262
002266
002275
002295
002300
002302
002305
From 002308 to 002311

Model: A4CB

000086
From 000088 to 000089
From 000095 to 000096
From 000256 to 000258
From 000263 to 000264
From 000398 to 000399
000401
From 000406 to 000410
From 000413 to 000415
000417
From 000698 to 000701
000709

Model: A4CB (cont'd)

From 000891 to 000893
000896
From 000899 to 000900
From 001070 to 001072
001075
001079
001081
001083
001085
From 001090 to 001091
001093
From 001250 to 001251
001253
001261
From 002079 to 002080
002083
002087
002089
From 002210 to 002212
From 002214 to 002215
002219
From 002349 to 002350
002357
002361
From 002363 to 002364
002366
From 002368 to 002369
002374
002376
From 002379 to 002381
From 002383 to 002385
002387

Model: A4CC

000014
000016
From 000019 to 000020
000029
000032
000048
000051
000053
000061
000063
From 000070 to 000072
From 000114 to 000115
000119
000123
000127
000129
From 000172 to 000174
From 000176 to 000177
000183
000189
From 000191 to 000192
000199

Model: A4CC (cont'd)

000209
From 000211 to 000212
000215
000217
From 000222 to 000223
000231
000233
From 000239 to 000240
000246
000253
From 000255 to 000257
000262
000266
000268
From 000274 to 000275
000282
000286
000288
From 000291 to 000292
000296
000301
000305
From 000309 to 000311
From 000317 to 000318
000323
From 000331 to 000332
From 000344 to 000346
000350
From 000414 to 000415
000426
000435
000438
000440
From 000451 to 000453
000490
From 000495 to 000497
000501
000504
000507
000514
000522
000525
000527
000534
000543
000547
000551
From 000553 to 000555
000562
000564
000574
000593
000604
From 000607 to 000608
000612
000673

Model: A4CC (cont'd)
000675
From 000677 to 000679
000683
From 000697 to 000698
000709
000723
000731
000733
000748
000759
000763
000783
000788
000804
000806
000808
000812
000821
000824
000829
000866
000872
From 000874 to 000875
000877
000898
000900
000922
000925
000927
000935
000955
000958
000963
000970
000983
001015
001020
001023
From 001029 to 001030
001033
001045
001047
From 001050 to 001051
001054
001058
From 001060 to 001061
001063
001081
001091
001100
001107
001111
001116
001119
001124
001126

Model: A4CC (cont'd)
001128
001137
001149
From 001153 to 001154
001156
001158
From 001161 to 001162
001190
001204
001210
001219
001228
From 001233 to 001234
001264
001271
001280
001287
001290

Model: A4CD
From 000002 to 000005
000012
000099
000102
000104
000108
From 000158 to 000159
000161
000163
000168
000361
000364
000367
000372
From 000399 to 000401
From 000404 to 000406
000408
From 001298 to 001299
From 001302 to 001303
001305

Model: A4CE
000543
000549
000553
000558
000560
000562
From 001175 to 001176
001600
001602
001606
002234
002331
002333
002335

Model: A4CF
From 000381 to 000382
From 000385 to 000386
000389
From 000641 to 000643
000994
000996

Model: A4CG
000004
000007
000012
000014
000021
000029
000036
000142
000148
000162
From 000170 to 000172
000174
000297
000305
000312
000315
000323
000325
000332
000334
000336
000418
000430
000437
000443
From 000454 to 000455
000515
000517
000520
From 000527 to 000528
From 000544 to 000546
000554
000559
From 000567 to 000568
000571
000575
000577
From 000587 to 000588
000592
000599
000603
From 000605 to 000606
000624
000697
000704
From 000706 to 000707
From 000710 to 000711
From 000731 to 000732

Model: A4CG (cont'd)

000817
000822
000833
000838
000845
000851
000859
000890
000900
000902
From 000906 to 000907
From 000912 to 000913
000917
000945
000998
001023
001026
001028
From 001031 to 001032
001034
001042
001083
001085
001087
001091
001099
001142
001147
From 001154 to 001156
From 001163 to 001164
001171
001174
001177
001187
From 001289 to 001290
001293
From 001325 to 001326
001330
001335
001337
001370
001374
001377
From 001380 to 001381
001385
001388
001431
001440
001450
From 001453 to 001454
001457
From 001460 to 001461
001518
001521
From 001539 to 001540
001547

Model: A4CG (cont'd)

001610
001615
001625
001642
From 001649 to 001650
001682
001686
From 001706 to 001708
001710
001783
001793
001799
From 001804 to 001805
001809
From 001811 to 001812
001814
001816
001866
001871
001874
001879
001882
001889
From 001893 to 001894
001899
001958
001962
001966
001973
001984
001989
001998
002007
From 002010 to 002011
002019
002023

Model: A4CH

000037
From 000041 to 000043
000052
From 000055 to 000056
From 000058 to 000059
000628
000630
From 000632 to 000633
000736
From 000743 to 000744
From 001346 to 001347
From 001355 to 001356
002044
002046
002048
002050
002053

Model: A4CJ

000101
From 000495 to 000497
000503
000805
From 001556 to 001557
001909
001914
001917
001919

Model: A7CA

000099
000108
From 000292 to 000293
000298
000724
000731
000738
000956
From 000958 to 000959
000961
000963
000965
000973
001528
001781
001789
002108

Model: A7CC

000221
000224
000228
000395
000654
000758
000877
000881
001057
From 001060 to 001061
001064
001068
001213
001217
001224
From 001302 to 001303
001474
001669
001679
001729
001735

Model: A7CD

000187
From 000189 to 000190
000192

Model: A7CD (cont'd)

From 000643 to 000644
From 000646 to 000648

Model: A7CE

From 000211 to 000212

Model: A9CA

000004
From 000016 to 000018
From 000021 to 000022
From 000172 to 000173
From 000176 to 000178
000181
000192
000326
000332
000334
000337
000494
000505
000621
000623
From 000626 to 000627
000635
000639
000645
From 000647 to 000648
000786
000794
000797
000800
000802
From 000805 to 000806
000808
000810
From 000812 to 000813
001020
001180
001183
001188
From 001262 to 001263
001268
001288
001296
001491
001509
001513
001550
001558
001563
001573
001650
001654
001697
001703
001712
001715

Model: A9CA (cont'd)

001815
001819
From 001823 to 001824
From 001874 to 001875
001885
001972
001978
002138
002144
002147
002158
002161
002173

Model: A9CB

From 000158 to 000159
000162
000164
000314
From 000318 to 000319
From 000321 to 000322
From 000986 to 000987
From 000991 to 000994
From 001299 to 001300
From 001302 to 001303
From 001305 to 001306
001309
From 001543 to 001548
001806
001811
002282
002293
002318
002322
002324
002326

Model: A9CC

000083
000092
000094
From 000254 to 000255
000263
000279
000457
000471
000475
000477
000479
000485
000661
000670
000677
000681
000684
From 000691 to 000693
000770

Model: A9CC (cont'd)

000779
000786
000788
000794
000801
000964
000970
000972
000980
001112
001118
001122
001124
001189
001193
001198
From 001211 to 001212
From 001264 to 001265
001267
001275
001281
001405
001411
001414
001479
001481
001495
001604
001742
001758
001762
From 001769 to 001771
001841
From 001847 to 001848

Model: A9CD

From 000535 to 000537
000539

Model: A9CE

001725
001728

Model: B5CA

From 000114 to 000115
000118
000122
000128
000132
000270
000276
From 000280 to 000281
000284
000583
000710
000717
000911

Model: B5CA (cont'd)
From 000923 to 000924
000936
000939
000946
000949
001279
001424
001428
From 001612 to 001613
001616
001625
From 001630 to 001631
001755
001764
001772
001777
001960

Model: B5CB
000242
000248
000341
000344
000347
000352
From 000356 to 000357
000359
000361
From 000367 to 000368
From 000376 to 000377
000384
000747
From 000866 to 000867
000952
001048
001052
001132
001237
001239
From 001246 to 001247
001250
001253
001259
From 001395 to 001396
From 001402 to 001404
001561
001594
001661
001922
001924
001933
001945

Model: B5CC
000086
000088
000147

Model: B5CC (cont'd)
000460
000477
From 000618 to 000619
From 000625 to 000626
000630
000633
From 000649 to 000651
From 000665 to 000666
From 000694 to 000695
000841
From 000845 to 000846
000848
000851
000854
000860
From 000938 to 000939
000942
From 000944 to 000945
000947
000999
001075
From 001167 to 001168
001171

Model: B5CE
000229
000240

Model: B5CF
000771
000778

Model: B9CA
From 000009 to 000013
000018
000029
000036
From 000038 to 000039
000056
000059
From 000064 to 000065
000070
000077
000079
000082
000084
000126
000131
000136
000138
From 000142 to 000143
From 000147 to 000148
From 000159 to 000161
From 000164 to 000166
000183
000186
000189

Model: B9CA (cont'd)
000200
000212
000216
From 000219 to 000220
000234
000237
From 000244 to 000245
000247
000252
From 000260 to 000262
000266
000268
000271
000273
From 000277 to 000279
000283
000287
000289
From 000294 to 000295
000302
000304
000309
000317
000325
From 000333 to 000334
From 000336 to 000337
From 000340 to 000342
000348
000350
000352
000362
000372
000424
000427
000430
000433
From 000800 to 000801
000803
000811
000814
000816
000827
000829
000922
000924
From 000928 to 000929
000942
000946
000949
From 001054 to 001055
From 001058 to 001059
001071
001078
001080
001091
001095

Model: B9CA (cont'd)

001106
001110
001113
001118
001123
001125
001197
001200
001202
001206
001210
From 001212 to 001213
From 001229 to 001230
001232
001234
001238
001317
From 001352 to 001353
001358
001384
From 001387 to 001388
001390
From 001393 to 001394
001443
001445
001448
001453
001505
001507
001515
001522
001525
001554
001557
001564
001571
From 001625 to 001627
001635
From 001664 to 001665
001667
001676
001744
001751
001886
From 001897 to 001898
001908

Model: B9CB

From 000087 to 000089
From 000091 to 000092
From 000094 to 000095
From 000097 to 000098
From 000100 to 000102
From 000106 to 000109
From 000112 to 000113
000116

Model: B9CB (cont'd)

From 000172 to 000173
From 000175 to 000176
From 000181 to 000182
From 000376 to 000377
000380
From 000382 to 000383
000395
001180
001183
001185
From 001187 to 001188
001467
001469
001472
From 001476 to 001477
From 001487 to 001490
001527
From 001531 to 001532
001539
001688
From 001690 to 001691
001693
From 001696 to 001698
From 001700 to 001702
001704
001706
001771
From 001773 to 001775
From 001840 to 001841
From 001843 to 001844
001849
001851
From 002020 to 002021
002023
002027
002030

Model: B9CC

000050
000055
000057
000059
000063
000070
000073
000076
From 000084 to 000085
000089
000094
000099
000101
000105
000115
000118
000122
000127

Model: B9CC (cont'd)

000133
From 000138 to 000139
000143
From 000146 to 000147
From 000153 to 000155
From 000200 to 000201
From 000205 to 000207
000209
000215
From 000219 to 000220
000231
000238
000241
000243
000245
000251
000263
From 000266 to 000267
000270
000280
From 000287 to 000288
000297
From 000302 to 000303
000306
000310
000321
000329
000337
000342
000346
000352
000354
000366
000370
000373
From 000377 to 000379
000383
000390
000399
From 000402 to 000404
000408
000410
From 000418 to 000419
000458
000465
000467
000483
000486
000489
000493
000495
From 000501 to 000502
000508
From 000511 to 000513
From 000522 to 000523
000527

Model: B9CC (cont'd)
000530
000533
000536
000541
000544
000551
000554
From 000556 to 000557
000561
000564
000569
000573
000575
000590
000595
000597
000602
From 000605 to 000606
000609
000617
000619
000623
000626
000628
000635
000639
000641
000650
From 000653 to 000654
000658
000670
From 000680 to 000681
000683
000686
From 000690 to 000692
000703
000707
000710
From 000712 to 000713
000718
000722
From 000726 to 000727
From 000737 to 000738
000740
000770
000773
000775
000781
000783
000791
000797
From 000801 to 000802
000806
From 000815 to 000816
000829
From 000833 to 000836

Model: B9CC (cont'd)
000840
000848
000854
000856
From 000864 to 000865
000869
000871
000874
000880
000883
From 000888 to 000889
000926
000933
000938
000950
000958
From 000964 to 000965
000967
000970
000977
000979
000992
From 000994 to 000995
From 000997 to 000998
From 001000 to 001002
001012
001015
001023
001026
001038
001043
001048
001055
001065
001070
From 001078 to 001079
001101
001103
001114
001124
001135
001153
001155
From 001160 to 001162
001164
From 001168 to 001169
001185
001189
001191
001194
001196
001204
001214
001217
001224
From 001229 to 001230

Model: B9CC (cont'd)
From 001252 to 001253
001260
001262
001264
From 001266 to 001267
001278
001281
From 001353 to 001354
001359
001365
001384
From 001387 to 001388
From 001391 to 001392
001395
001398
001409
001437
001445
001449
001457
001470
001475
001501
001504
001506
From 001523 to 001525
001530
001568
001571
001585
001590
001609
001634
001645
001650
001660
001662
001664
From 001666 to 001667
001670
001673
001681
001684
001690
001693
From 001700 to 001701
001744
001750
001763
001767
001773
001787
001790
001795
001801
001808

Model: B9CC (cont'd)

001816
001821
001823
001827
From 001829 to 001831
001841
001850
001882
001902
001906
001916
001941
001944
001946
001953
001957
001960
From 001966 to 001967
001982
001985
001988
001990
002023
002027

Model: B9CD

000007
000012
From 000014 to 000015
000021
From 000024 to 000025
000028
000030
000032
From 000034 to 000035
From 000038 to 000039
000043
000048
000158
From 000160 to 000161
000163
000167
000170
000173
From 000175 to 000176
000180
000184
000186
000188
From 000817 to 000819
From 000821 to 000824
000827
000913
000915
From 000917 to 000918
000923

Model: B9CD (cont'd)

001285
From 001288 to 001290
001293
001295
From 001297 to 001299
001303
001305
001308
001311
001313
001320
001323
From 001326 to 001327
001418
001421
001428
From 001492 to 001493
From 001495 to 001496
From 001499 to 001500
001622
From 001624 to 001625
001628
001632
001708
001711
001716
From 001718 to 001719
From 001723 to 001724
001726
From 001729 to 001732
001738
001885
From 001887 to 001888
001995
From 001998 to 001999
002003
From 002042 to 002043
From 002047 to 002048
002050
From 002054 to 002055
002058
002060
From 002062 to 002064
From 002067 to 002072
From 002074 to 002076
From 002082 to 002084
002086
002088
002090
002093
002095
From 002097 to 002098
002100
From 002103 to 002104
002107
002110

Model: B9CD (cont'd)

From 002113 to 002116
002123

Model: B9CE

From 000403 to 000404
000415
000420
000422
000435
000437
000441
000445
000485
000487
From 000491 to 000492
From 000506 to 000507
000514
000516
000522
000525
000530
000609
000615
From 000618 to 000619
000624
000631
000638
000669
From 000671 to 000673
000676
000680
From 000694 to 000695
000703
000706
000710
000716
000718
From 000726 to 000727
000736
000740
000746
000754
000757
000769
000835
From 000841 to 000842
000845
From 000850 to 000851
000872
000877
000881
000886
000902
From 000965 to 000966
000975
From 000977 to 000978

Model: B9CE (cont'd)
000982
000984
001004
001007
001009
001011
From 001015 to 001016
001018
From 001028 to 001029
001032
001036
001044
001133
001144
001163
001173
001254
From 001274 to 001276
From 001280 to 001281
001287
001289
From 001291 to 001292
From 001298 to 001300
From 001306 to 001307
001309
001336
001340
001342
From 001345 to 001346
001372
001378
001407
001410
From 001416 to 001418
001429
001432
001496
From 001499 to 001500
001544
From 001576 to 001577
001579
001581
From 001586 to 001587
From 001590 to 001591
From 001594 to 001595
001616
001618
001620
001639
001652
001708
001720
001728
001731
001794

Model: B9CE (cont'd)
From 001796 to 001797
001805
001810
001818
001827
From 001916 to 001917
From 001931 to 001932
From 001935 to 001936
From 001941 to 001943
001945
001968
001990
From 002000 to 002001
002004

Model: B9CF
From 000639 to 000640
000643
From 000645 to 000646
000649
000653
000655
000658
000660
000987
From 000989 to 000990
000994
From 001734 to 001735
From 001738 to 001740
001743
From 002009 to 002010
002012
002015
From 002017 to 002018

Model: B9CG
From 000588 to 000589
000594
From 000600 to 000601
000784
000788
000794
From 001455 to 001456
001465
001860

Model: B9CH
From 000429 to 000430
From 000433 to 000435
000437
000439
000443
000445
000450
From 000452 to 000453
From 000455 to 000456
000474

Model: B9CH (cont'd)
000477
000480
000749
000751
000756
000758
000760
001542
From 001547 to 001549
001553
001972
002031
002040

Model: B9CJ
000557
000559
000561
From 000564 to 000565
000568
000576
000578
000778
000781
From 000955 to 000956
000962
From 001401 to 001403