



TEMSA

# SERVICE BULLETIN

**Bulletin Type.....:** U

**Bulletin No.....:** TS-U107

**Bulletin Name.....:** Filling Throat Of Fuel Tank

**Bulletin Ref.No.....:** 700002720

**NHTSA.....:**

**Release Date.....:** 08.08.2016

**Expiry Date.....:** 08.08.2017

**Vehicle Model.....:** TS 30,TS 35

**Flat Rate Code.....:** TSU107

**Flat Rate Time.....:** 20 min

**Subject:** Preventing fuel leaking out

**Summary:** New flap is to be installed in fuel tank filler cap

**Bulletin Responsible.....:** Hakan GÖRGÜN

**Published by & Approved by....:** Hakan GÜNERDEM

## Welding on the Chassis

- Always disconnect the batteries (starting with the negative lead).
- Disconnect the connectors of electrical and electronic equipment (electronic control units, sensors and actuators) if they are less than 20 inches away from the chassis part to be welded or the earth terminal of the welding equipment.
- The earth terminal should never be attached to vehicle components such as engine, axles and springs. Arcing on these parts is not permitted, because of the risk of damage to bearings, springs, etc.
- The earth terminal must make good contact and be placed as close as possible to the part to be welded.
- Plastic pipes, rubber parts and parabolic springs should be well protected against welding spatter and temperatures higher than 70°.
- The contact switch must not be in the accessory or contact position. The contact key should be removed.
- Reconnect in reversed order of disconnecting. Ensure that a good earth connection is made between chassis, engine and cab.



# SERVICE BULLETIN

Service bulletin expiry dates differ according to service bulletin type.

## Definitions

**Release Date:** As of this date the bulletin is released and available on E-Doc. Modification parts can be ordered. The time period between the release date and the effective date may vary according to the procurement lead time.

**Effective Date:** As of this date specified amount of the total modification parts will be available on Spare Parts Stock. Modification parts can be ordered and the application can be performed. ( except non-compliance and safety related campaigns, i.e. S-Type Bulletin)

**Part Order Deadline:** Last order date for modification parts. The part orders which will be placed after this date should be approved by Regional Coordinator.

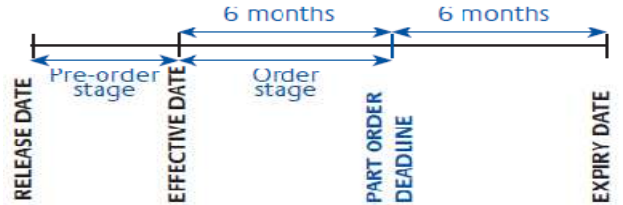
**Expiry Date:** Expiration date for the application.

## Bulletin Types

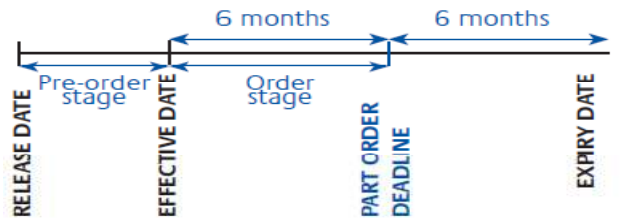
- **S-Type:** Application period of this bulletin is 18 months after the date of issue. S type bulletin is used for Recall Campaigns.



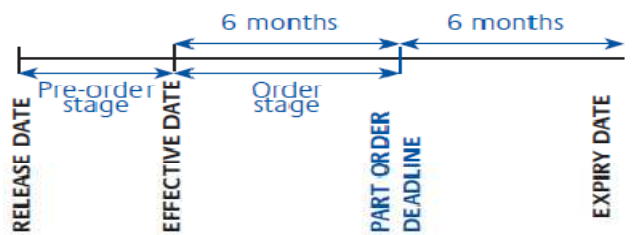
- **U-Type:** Application period of this bulletin is 12 months after the date of issue. U type bulletin is used for updates that need to be performed upon customer complaints.



- **C-Type:** Application period of this bulletin is 12 months after the date of issue. C type bulletin is generally used for supplying technical instructions or other type of information to service network.




- **M-Type:** Application period of this bulletin is 12 months after the date of issue. M type bulletin is used for updates that should be implemented without waiting for customer complaints.



## PART LIST

### Insatalled Part List

No	Part Number	Definition	Figure	Quantity	Unit
1	RP160120	CAP,FUEL TANK FILLER KIT AFTERSALES		1	Piece

### Exluded Part List

	Part Number	Definition	Figure	Quantity	Unit
1		Gasket		1	Piece

# SERVICE BULLETIN

## TECHNICAL INSTRUCTIONS

**Step 1.** Open the fuel tank cap to reach filling throat .(see. **Figure-1**)



**Figure-1**

**Step 2.** Clean fuel residue and Implement sealer on the gap.(see. **Figure-2**)



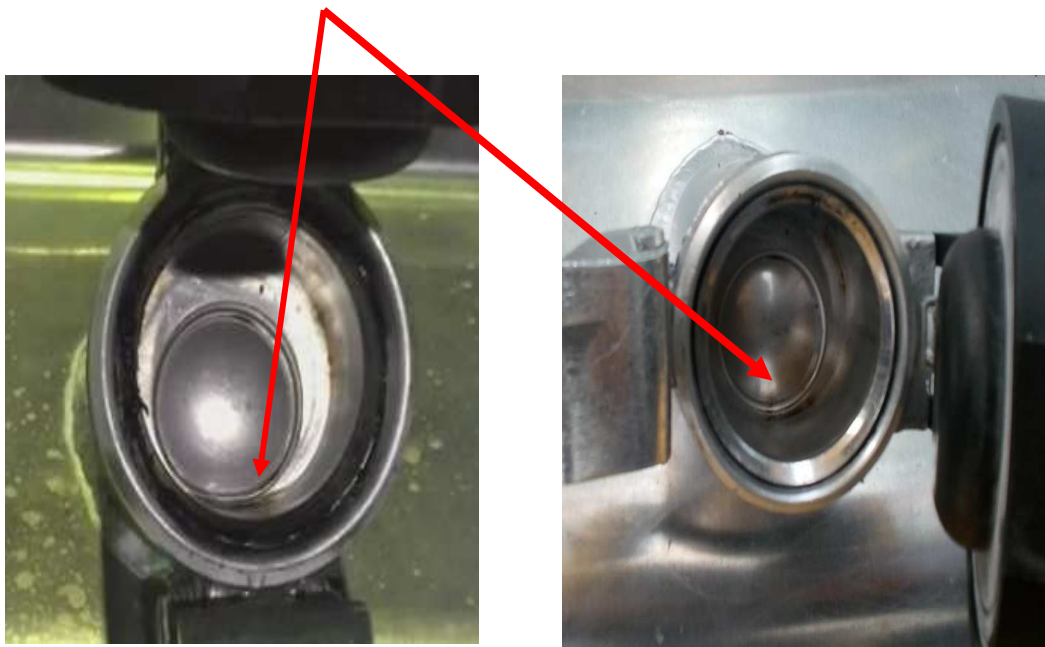
**Figure-2**

**Step 3.**Mount the flap inside the filling throat as shown below picture (see. **Figure-3**)



**Figure-3**

**Step 4.** . In both positions,flap must be adjusted so as to see the bottom of the tank as shown in figure 4.(see. **Figure-4**)



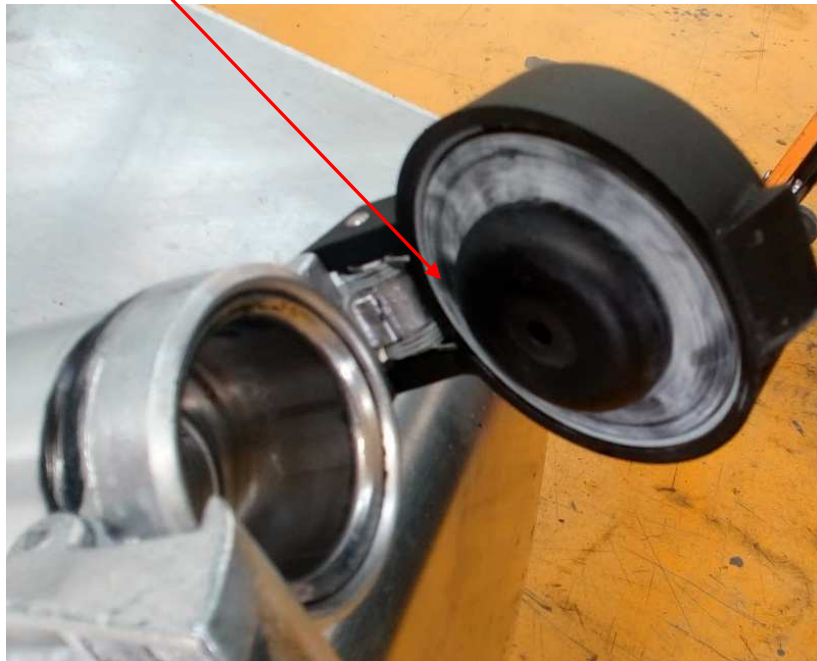
**Figure-4**

**Step 5.** Dismount the old gasket. (see. Figure-5)



**Figure-5**

**Step 6.** Mount new gasket which located in RP160120 numbered kit as shown in Figure-6 (see. Figure-6)



**Figure-6**

**Step 7.** After finishing all the steps, please wait at least 1 hour for drying of the sealant material.

# SERVICE BULLETIN

## RATE BREAK DOWN

<b>APPLICATION</b>	<b>DURATION</b>
Opening the fuel tank cap and cleaning the filling throat	3 min.
Implementing Sealer	7 min.
Mounting the flap inside the filling throat	5 min.
Replacing the gasket	5 min.
<b>Total Duration</b>	<b>20 min.</b>

## AFFECTED VEHICLE LIST

No	VIN	Country
1	NLTAPLY55H1000175	USA
2	NLTAPLY53H1000174	USA
3	NLTAPLY51H1000173	USA
4	NLTAPLY5XH1000172	USA
5	NLTAPLY58G1000170	USA
6	NLTAPLY51G1000169	USA
7	NLTAPLY5XG1000168	USA
8	NLTAPLY58G1000167	USA
9	NLTAPLY56G1000166	USA
10	NLTAPLU57F1000164	USA
11	NLTAPLU55F1000163	USA
12	NLTAPLU53F1000162	USA
13	NLTAPLU51F1000161	USA
14	NLTAPLU5XF1000160	USA
15	NLTAPLU53F1000159	USA
16	NLTAPLU51F1000158	USA
17	NLTAPLU58F1000156	USA
18	NLTAPLU56F1000155	USA
19	NLTAPLU5XF1000157	USA
20	NLTAPLU52F1000153	USA
21	NLTAPLU50F1000152	USA
22	NLTAPLU54F1000154	USA
23	NLTAPLU59F1000151	USA
24	NLTAPLU57F1000150	USA
25	NLTAPLU50F1000149	USA
26	NLTAPLU59F1000148	USA





TEMSA

## SERVICE BULLETIN

27	NLTAPLU57F1000147	USA
28	NLTAPLU55F1000146	USA
29	NLTAPLU53F1000145	USA
30	NLTAPLU51F1000144	USA
31	NLTAPLU5XF1000143	USA
32	NLTAPLU58F1000142	USA
33	NLTAPLU56F1000141	USA
34	NLTAPLU54F1000140	USA
35	NLTAPLU58F1000139	USA
36	NLTAPLU56F1000138	USA
37	NLTAPLU54F1000137	USA
38	NLTAPLU52F1000136	USA
39	NLTAPLU50F1000135	USA
40	NLTAPLU59F1000134	USA
41	NLTAPLU57F1000133	USA
42	NLTAPLU55F1000132	USA
43	NLTAPLU53F1000131	USA
44	NLTAPLU51F1000130	USA
45	NLTAPLU55F1000129	USA
46	NLTAPLU53F1000128	USA
47	NLTAPLU51F1000127	USA
48	NLTAPLU5XF1000126	USA
49	NLTAPLU5XE1000125	USA
50	NLTAPLU58E1000124	USA
51	NLTAPLU56E1000123	USA
52	NLTAPLU54E1000122	USA
53	NLTAPLU52E1000121	USA
54	NLTAPLU50E1000120	USA



TEMSA

## SERVICE BULLETIN

55	NLTAPLU54E1000119	USA
56	NLTAPLU52E1000118	USA
57	NLTAPLU50E1000117	USA
58	NLTAPLU59E1000116	USA
59	NLTAPLU57E1000115	USA
60	NLTAPLU55E1000114	USA
61	NLTAPLU53E1000113	USA
62	NLTAPLU51E1000112	USA
63	NLTAPLU5XE1000111	USA
64	NLTAPLU58E1000110	USA
65	NLTAPLU51E1000109	USA
66	NLTAPLU5XE1000108	USA
67	NLTAPLU58E1000107	USA
68	NLTAPLU56E1000106	USA
69	NLTAPLU54E1000105	USA
70	NLTAPLU52E1000104	USA
71	NLTAPLU50E1000103	USA
72	NLTAPLU59E1000102	USA
73	NLTAPLU57E1000101	USA
74	NLTAPLU55E1000100	USA
75	NLTAPLU52E1000099	USA
76	NLTAPLU50E1000098	USA
77	NLTAPLU59E1000097	USA
78	NLTAPLU55E1000016	USA
79	NLTAPLU53E1000015	USA
80	NLTAPLU51E1000014	USA
81	NLTAPLU5XE1000013	USA
82	NLTAPLU58E1000012	USA



TEMSA

## SERVICE BULLETIN

83	NLTAPLU56E1000011	USA
84	NLTAPLU54E1000010	USA
85	NLTAPLU58E1000009	USA
86	NLTAPLU56E1000008	USA
87	NLTAPLU54E1000007	USA
88	NLTAPLU52E1000006	USA
89	NLTAPLU50E1000005	USA
90	NLTAPLU59E1000004	USA
91	NLTAPLU57E1000003	USA
92	NLTAPLR54D1000080	USA
93	NLTAPLR58D1000079	USA
94	NLTAPLR56D1000078	USA
95	NLTAPLR54D1000077	USA
96	NLTAPLR52D1000076	USA
97	NLTAPLR50D1000075	USA
98	NLTAPLR59D1000074	USA
99	NLTAPLR57D1000073	USA
100	NLTAPLR55D1000072	USA
101	NLTAPLR53D1000071	USA
102	NLTAPLU55E1000002	USA
103	NLTAPLR51D1000070	USA
104	NLTAPLR55D1000069	USA
105	NLTAPLR53D1000068	USA
106	NLTAPLR51D1000067	USA
107	NLTAPLR5XD1000066	USA
108	NLTAPLR58D1000065	USA
109	NLTAPLR56D1000064	USA
110	NLTAPLR54D1000063	USA



TEMSA

## SERVICE BULLETIN

111	NLTAPLR52D1000062	USA
112	NLTAPLR50D1000061	USA
113	NLTAPLR59D1000060	USA
114	NLTAPLR52D1000059	USA
115	NLTAPLR50D1000058	USA
116	NLTAPLR59D1000057	USA
117	NLTAPLU53E1000001	USA
118	NLTAPLR57D1000056	USA
119	NLTAPLR55D1000055	USA
120	NLTAPLR53D1000054	USA
121	NLTAPLR51D1000053	USA
122	NLTAPLR5XD1000052	USA
123	NLTAPLR58D1000051	USA
124	NLTAPLR56D1000050	USA
125	NLTAPLR5XD1000049	USA
126	NLTAPLR58D1000048	USA
127	NLTAPLR56D1000047	USA
128	NLTAPLR54D1000046	USA
129	NLTAPLR52D1000045	USA
130	NLTAPLR50D1000044	USA
131	NLTAPLR59D1000043	USA
132	NLTAPLR57D1000042	USA
133	NLTAPLR55D1000041	USA
134	NLTAPLR53D1000040	USA
135	NLTAPLR57D1000039	USA
136	NLTAPLR55D1000038	USA
137	NLTAPLR53D1000037	USA
138	NLTAPLR51D1000036	USA



TEMSA

## SERVICE BULLETIN

139	NLTAPLR5XD1000035	USA
140	NLTAPLR58D1000034	USA
141	NLTAPLR56D1000033	USA
142	NLTAPLR54D1000032	USA
143	NLTAPLR52D1000031	USA
144	NLTAPLR50D1000030	USA
145	NLTAPLR54D1000029	USA
146	NLTAPLR52D1000028	USA
147	NLTAPLR50D1000027	USA
148	NLTAPLR59D1000026	USA
149	NLTAPLR57D1000025	USA
150	NLTAPLR55D1000024	USA
151	NLTAPLR53D1000023	USA
152	NLTAPLR51D1000022	USA
153	NLTAPLR5XD1000021	USA
154	NLTAPLR58D1000020	USA
155	NLTAPLR51D1000019	USA
156	NLTAPLR5XD1000018	USA
157	NLTAPLR58D1000017	USA
158	NLTAPLR56D1000016	USA
159	NLTAPLR54D1000015	USA
160	NLTAPLR52D1000014	USA
161	NLTAPLR50D1000013	USA
162	NLTAPLR59D1000012	USA
163	NLTAPLR57D1000011	USA
164	NLTAPLR55D1000010	USA
165	NLTAPLR59D1000009	USA
166	NLTAPLR57D1000008	USA



167	NLTAPLR55D1000007	USA
168	NLTAPLR53D1000006	USA
169	NLTAPLR51D1000005	USA
170	NLTAPLR5XD1000004	USA
171	NLTAPLR58C1000002	USA
172	NLTAPLR56C1000001	USA
173	NLTRPPY75H1000415	USA
174	NLTRPPY73H1000414	USA
175	NLTRPPY78H1000411	USA
176	NLTRPPY7XH1000412	USA
177	NLTRPPY71H1000413	USA
178	NLTRPPY76H1000410	USA
179	NLTRPPY7XH1000409	USA
180	NLTRPPY76H1000407	USA
181	NLTRPPY76G1000406	USA
182	NLTRPPY74G1000405	USA
183	NLTRPPY72G1000404	USA
184	NLTRPPY70G1000403	USA
185	NLTRPPY79G1000402	USA
186	NLTRPPY77G1000401	USA
187	NLTRPPY75G1000400	USA
188	NLTRPPY72G1000399	USA
189	NLTRPPY70G1000398	USA
190	NLTRPPY79G1000397	USA
191	NLTRPPY77G1000396	USA
192	NLTRPPY75G1000395	USA
193	NLTRPPY73G1000394	USA
194	NLTRPPY71G1000393	USA



195	NLTRPPY7XG1000392	USA
196	NLTRPPY78G1000391	USA
197	NLTRPPY76G1000390	USA
198	NLTRPPY7XG1000389	USA
199	NLTRPPY78G1000388	USA
200	NLTRPPY76G1000387	USA
201	NLTRPPY74G1000386	USA
202	NLTRPPY72G1000385	USA
203	NLTRPPY70G1000384	USA
204	NLTRPPY79G1000383	USA
205	NLTRPPY77G1000382	USA
206	NLTRPPX73G1000381	USA
207	NLTRPPX71G1000380	USA
208	NLTRPPX73G1000378	USA
209	NLTRPPX75G1000379	USA
210	NLTRPPX71G1000377	USA
211	NLTRPPX7XG1000376	USA
212	NLTRPPX78G1000375	USA
213	NLTRPPX76G1000374	USA
214	NLTRPPX74G1000373	USA
215	NLTRPPX72G1000372	USA
216	NLTRPPX70G1000371	USA
217	NLTRPPX79G1000370	USA
218	NLTRPPX72G1000369	USA
219	NLTRPPX79G1000367	USA
220	NLTRPPX70G1000368	USA
221	NLTRPPX77G1000366	USA
222	NLTRPPX75G1000365	USA



223	NLTRPPX73G1000364	USA
224	NLTRPPX71G1000363	USA
225	NLTRPPX7XG1000362	USA
226	NLTRPPX78G1000361	USA
227	NLTRPPX76G1000360	USA
228	NLTRPPX7XG1000359	USA
229	NLTRPPX78G1000358	USA
230	NLTRPPX76G1000357	USA
231	NLTRPPX74G1000356	USA
232	NLTRPPX72G1000355	USA
233	NLTRPPX70G1000354	USA
234	NLTRPPX79G1000353	USA
235	NLTRPPX77G1000352	USA
236	NLTRPPX75G1000351	USA
237	NLTRPPX73G1000350	USA
238	NLTRPPX77G1000349	USA
239	NLTRPPX75G1000348	USA
240	NLTRPPY75G1000347	USA
241	NLTRPPX71G1000346	USA
242	NLTRPPX7XG1000345	USA
243	NLTRPPX78G1000344	USA
244	NLTRPPX76G1000343	USA
245	NLTRPPX74G1000342	USA
246	NLTRPPX72G1000341	USA
247	NLTRPPX70G1000340	USA
248	NLTRPPX74G1000339	USA
249	NLTRPPX72G1000338	USA
250	NLTRPPX70G1000337	USA





TEMSA

## SERVICE BULLETIN

251	NLTRPPX79G1000336	USA
252	NLTRPPX77G1000335	USA
253	NLTRPPX75G1000334	USA
254	NLTRPPX73G1000333	USA
255	NLTRPPX71G1000332	USA
256	NLTRPPX7XG1000331	USA
257	NLTRPPU74F1000330	USA
258	NLTRPPU78F1000329	USA
259	NLTRPPU76F1000328	USA
260	NLTRPPU74F1000327	USA
261	NLTRPPU72F1000326	USA
262	NLTRPPU70F1000325	USA
263	NLTRPPU79F1000324	USA
264	NLTRPPU77F1000323	USA
265	NLTRPPU75F1000322	USA
266	NLTRPPU73F1000321	USA
267	NLTRPPU71F1000320	USA
268	NLTRPPU75F1000319	USA
269	NLTRPPU73F1000318	USA
270	NLTRPPU71F1000317	USA
271	NLTRPPU7XF1000316	USA
272	NLTRPPU78F1000315	USA
273	NLTRPPU76F1000314	USA
274	NLTRPPU74F1000313	USA
275	NLTRPPU72F1000312	USA
276	NLTRPPU70F1000311	USA
277	NLTRPPU79F1000310	USA
278	NLTRPPU72F1000309	USA



279	NLTRPPU70F1000308	USA
280	NLTRPPU79F1000307	USA
281	NLTRPPU77F1000306	USA
282	NLTRPPU75F1000305	USA
283	NLTRPPU73F1000304	USA
284	NLTRPPU71F1000303	USA
285	NLTRPPU7XF1000302	USA
286	NLTRPPU78F1000301	USA
287	NLTRPPU76F1000300	USA
288	NLTRPPU73F1000299	USA
289	NLTRPPU71F1000298	USA
290	NLTRPPU7XF1000297	USA
291	NLTRPPU78F1000296	USA
292	NLTRPPU76F1000295	USA
293	NLTRPPU74F1000294	USA
294	NLTRPPU72F1000293	USA
295	NLTRPPU70F1000292	USA
296	NLTRPPU79F1000291	USA
297	NLTRPPU77F1000290	USA
298	NLTRPPU70F1000289	USA
299	NLTRPPU79F1000288	USA
300	NLTRPPU77F1000287	USA
301	NLTRPPU75F1000286	USA
302	NLTRPPU73F1000285	USA
303	NLTRPPU71F1000284	USA
304	NLTRPPU7XF1000283	USA
305	NLTRPPU78F1000282	USA
306	NLTRPPU76F1000281	USA



# SERVICE BULLETIN

307	NLTRPPU74F1000280	USA
308	NLTRPPU7XE1000279	USA
309	NLTRPPU78E1000278	USA
310	NLTRPPU76E1000277	USA
311	NLTRPPU74E1000276	USA
312	NLTRPPU72E1000275	USA
313	NLTRPPU70E1000274	USA
314	NLTRPPU79E1000273	USA
315	NLTRPPU77E1000272	USA
316	NLTRPPU75E1000271	USA
317	NLTRPPU73E1000270	USA
318	NLTRPPU77E1000269	USA
319	NLTRPPU75E1000268	USA
320	NLTRPPU73E1000267	USA
321	NLTRPPU71E1000266	USA
322	NLTRPPU7XE1000265	USA
323	NLTRPPU78E1000264	USA
324	NLTRPPU76E1000263	USA
325	NLTRPPU74E1000262	USA
326	NLTRPPU72E1000261	USA
327	NLTRPPU70E1000260	USA
328	NLTRPPU74E1000259	USA
329	NLTRPPU72E1000258	USA
330	NLTRPPU70E1000257	USA
331	NLTRPPU79E1000256	USA
332	NLTRPPU77E1000255	USA
333	NLTRPPU75E1000254	USA
334	NLTRPPU73E1000253	USA



TEMSA

## SERVICE BULLETIN

335	NLTRPPU71E1000252	USA
336	NLTRPPU7XE1000251	USA
337	NLTRPPU78E1000250	USA
338	NLTRPPU71E1000249	USA
339	NLTRPPU7XE1000248	USA
340	NLTRPPU78E1000247	USA
341	NLTRPPU76E1000246	USA
342	NLTRPPU74E1000245	USA
343	NLTRPPU72E1000244	USA
344	NLTRPPU70E1000243	USA
345	NLTRPPU79E1000242	USA
346	NLTRPPU77E1000241	USA
347	NLTRPPU75E1000240	USA
348	NLTRPPU77E1000238	USA
349	NLTRPPU75E1000237	USA
350	NLTRPPU73E1000236	USA
351	NLTRPPU79E1000239	USA
352	NLTRPPU71E1000235	USA
353	NLTRPPU7XE1000234	USA
354	NLTRPPU78E1000233	USA
355	NLTRPPU76E1000232	USA
356	NLTRPPU74E1000231	USA
357	NLTRPPU72E1000230	USA
358	NLTRPPU76E1000229	USA
359	NLTRPPU74E1000228	USA
360	NLTRPPU72E1000227	USA
361	NLTRPPU70E1000226	USA
362	NLTRPPU79E1000225	USA



# SERVICE BULLETIN

363	NLTRPPU77E1000224	USA
364	NLTRPPU75E1000223	USA
365	NLTRPPU73E1000222	USA
366	NLTRPPU71E1000221	USA
367	NLTRPPU7XE1000220	USA
368	NLTRPPU73E1000219	USA
369	NLTRPPU71E1000218	USA
370	NLTRPPU7XE1000217	USA
371	NLTRPPU78E1000216	USA
372	NLTRPPU76E1000215	USA
373	NLTRPPU74E1000214	USA
374	NLTRPPU72E1000213	USA
375	NLTRPPU70E1000212	USA
376	NLTRPPU79E1000211	USA
377	NLTRPPU77E1000210	USA
378	NLTRPPU70E1000209	USA
379	NLTRPPU79E1000208	USA
380	NLTRPPU77E1000207	USA
381	NLTRPPU75E1000206	USA
382	NLTRPPU73E1000205	USA
383	NLTRPPU71E1000204	USA
384	NLTRPPU7XE1000203	USA
385	NLTRPPU78E1000202	USA
386	NLTRPPU76E1000201	USA
387	NLTRPPU74E1000200	USA
388	NLTRPPU73E1000026	USA
389	NLTRPPU71E1000025	USA
390	NLTRPPU7XE1000024	USA



391	NLTRPPU78E1000023	USA
392	NLTRPPU76E1000022	USA
393	NLTRPPU74E1000021	USA
394	NLTRPPU72E1000020	USA
395	NLTRPPU76E1000019	USA
396	NLTRPPU74E1000018	USA
397	NLTRPPU72E1000017	USA
398	NLTRPPU70E1000016	USA
399	NLTRPPU79E1000015	USA
400	NLTRPPU77E1000014	USA
401	NLTRPPU75E1000013	USA
402	NLTRPPU73E1000012	USA
403	NLTRPPU71E1000011	USA
404	NLTRPPU7XE1000010	USA
405	NLTRPPU73E1000009	USA
406	NLTRPPU71E1000008	USA
407	NLTRPPU7XE1000007	USA
408	NLTRPPU7XD1000006	USA
409	NLTRPPU78D1000005	USA
410	NLTRPPU76D1000004	USA
411	NLTRPPR76D1000173	USA
412	NLTRPPR74D1000172	USA
413	NLTRPPR72D1000171	USA
414	NLTRPPR70D1000170	USA
415	NLTRPPR74D1000169	USA
416	NLTRPPR72D1000168	USA
417	NLTRPPR70D1000167	USA
418	NLTRPPR79D1000166	USA



419	NLTRPPR77D1000165	USA
420	NLTRPPR75D1000164	USA
421	NLTRPPR73D1000163	USA
422	NLTRPPR71D1000162	USA
423	NLTRPPU74D1000003	USA
424	NLTRPPR7XD1000161	USA
425	NLTRPPR78D1000160	USA
426	NLTRPPR71D1000159	USA
427	NLTRPPR7XD1000158	USA
428	NLTRPPR78D1000157	USA
429	NLTRPPR76D1000156	USA
430	NLTRPPR74D1000155	USA
431	NLTRPPR72D1000154	USA
432	NLTRPPR70D1000153	USA
433	NLTRPPR79D1000152	USA
434	NLTRPPR77D1000151	USA
435	NLTRPPR75D1000150	USA
436	NLTRPPR79D1000149	USA
437	NLTRPPU72D1000002	USA
438	NLTRPPR77D1000148	USA
439	NLTRPPR75D1000147	USA
440	NLTRPPR73D1000146	USA
441	NLTRPPR71D1000145	USA
442	NLTRPPR7XD1000144	USA
443	NLTRPPR78D1000143	USA
444	NLTRPPR74D1000141	USA
445	NLTRPPR72D1000140	USA
446	NLTRPPR76D1000142	USA



447	NLTRPPR76D1000139	USA
448	NLTRPPR74D1000138	USA
449	NLTRPPR72D1000137	USA
450	NLTRPPR70D1000136	USA
451	NLTRPPR79D1000135	USA
452	NLTRPPR77D1000134	USA
453	NLTRPPR75D1000133	USA
454	NLTRPPR73D1000132	USA
455	NLTRPPR71D1000131	USA
456	NLTRPPR7XD1000130	USA
457	NLTRPPR73D1000129	USA
458	NLTRPPR78D1000126	USA
459	NLTRPPR71D1000128	USA
460	NLTRPPR7XD1000127	USA
461	NLTRPPR76D1000125	USA
462	NLTRPPR74D1000124	USA
463	NLTRPPR72D1000123	USA
464	NLTRPPR70D1000122	USA
465	NLTRPPR79D1000121	USA
466	NLTRPPR77D1000120	USA
467	NLTRPPR70D1000119	USA
468	NLTRPPR79D1000118	USA
469	NLTRPPR77D1000117	USA
470	NLTRPPR75D1000116	USA
471	NLTRPPR73D1000115	USA
472	NLTRPPR71D1000114	USA
473	NLTRPPR7XD1000113	USA
474	NLTRPPR78D1000112	USA





475	NLTRPPR76D1000111	USA
476	NLTRPPR74D1000110	USA
477	NLTRPPR78D1000109	USA
478	NLTRPPR76D1000108	USA
479	NLTRPPR70D1000105	USA
480	NLTRPPR74D1000107	USA
481	NLTRPPR79D1000104	USA
482	NLTRPPR72D1000106	USA
483	NLTRPPR77D1000103	USA
484	NLTRPPR75D1000102	USA
485	NLTRPPR73D1000101	USA
486	NLTRPPR71D1000100	USA
487	NLTRPPR79D1000099	USA
488	NLTRPPR77D1000098	USA
489	NLTRPPR75D1000097	USA
490	NLTRPPU79E1000001	USA
491	NLTRPPR75C1000096	USA
492	NLTRPPR73C1000095	USA
493	NLTRPPR71C1000094	USA
494	NLTRPPR7XC1000093	USA
495	NLTRPPR72D1000090	USA
496	NLTRPPR76D1000089	USA
497	NLTRPPR74D1000088	USA
498	NLTRPPR72D1000087	USA
499	NLTRPPR70D1000086	USA
500	NLTRPPR79D1000085	USA
501	NLTRPPR77D1000084	USA
502	NLTRPPR75D1000083	USA



503	NLTRPPR73D1000082	USA
504	NLTRPPR73C1000081	USA
505	NLTRPPR78C1000092	USA
506	NLTRPPR71C1000080	USA
507	NLTRPPR75C1000079	USA
508	NLTRPPR73C1000078	USA
509	NLTRPPR71C1000077	USA
510	NLTRPPR7XC1000076	USA
511	NLTRPPR78C1000075	USA
512	NLTRPPR76C1000091	USA
513	NLTRPPR76C1000074	USA
514	NLTRPPR74C1000073	USA
515	NLTRPPR72C1000072	USA
516	NLTRPPR70C1000071	USA
517	NLTRPPR79C1000070	USA
518	NLTRPPR72C1000069	USA
519	NLTRPPR70C1000068	USA
520	NLTRPPR79C1000067	USA
521	NLTRPPR77C1000066	USA
522	NLTRPPR75C1000065	USA
523	NLTRPPR73C1000064	USA
524	NLTRPPR71C1000063	USA
525	NLTRPPR7XC1000062	USA
526	NLTRPPR78C1000061	USA
527	NLTRPPR76C1000060	USA
528	NLTRPPR7XC1000059	USA
529	NLTRPPR78C1000058	USA
530	NLTRPPR76C1000057	USA



TEMSA

## SERVICE BULLETIN

531	NLTRPPR74C1000056	USA
532	NLTRPPR72C1000055	USA
533	NLTRPPR70C1000054	USA
534	NLTRPPR79C1000053	USA
535	NLTRPPR77C1000052	USA
536	NLTRPPR75C1000051	USA
537	NLTRPPR70C1000040	USA
538	NLTRPPR74C1000039	USA
539	NLTRPPR72C1000038	USA
540	NLTRPPR70C1000037	USA
541	NLTRPPR79C1000036	USA
542	NLTRPPR77C1000035	USA
543	NLTRPPR75C1000034	USA
544	NLTRPPR73C1000033	USA
545	NLTRPPR71C1000032	USA
546	NLTRPPR7XC1000031	USA
547	NLTRPPR78C1000030	USA
548	NLTRPPR71C1000029	USA
549	NLTRPPR7XC1000028	USA
550	NLTRPPR78C1000027	USA
551	NLTRPPR76C1000026	USA
552	NLTRPPR74C1000025	USA
553	NLTRPPR72C1000024	USA
554	NLTRPPR70C1000023	USA
555	NLTRPPR79C1000022	USA
556	NLTRPPR77C1000021	USA
557	NLTRPPR75C1000020	USA
558	NLTRPPR79C1000019	USA



559	NLTRPPR77C1000018	USA
560	NLTRPPR75C1000017	USA
561	NLTRPPR73C1000016	USA
562	NLTRPPR71C1000015	USA
563	NLTRPPR7XC1000014	USA
564	NLTRPPR78C1000013	USA
565	NLTRPPR76C1000012	USA
566	NLTRPPR74C1000011	USA
567	NLTRPPR72C1000010	USA
568	NLTRPPR76C1000009	USA
569	NLTRPPR74C1000008	USA
570	NLTRPPR72C1000007	USA
571	NLTRPPR70C1000006	USA
572	NLTRPPR79C1000005	USA
573	NLTRPPR77C1000004	USA
574	NLTRPPR75C1000003	USA
575	NLTRPPR73C1000002	USA
576	NLTRPPR71C1000001	USA
577	NLTRPPR73C1000050	USA
578	NLTRPPR77C1000049	USA
579	NLTRPPR75C1000048	USA
580	NLTRPPR73C1000047	USA
581	NLTRPPR71C1000046	USA
582	NLTRPPR7XC1000045	USA
583	NLTRPPR78C1000044	USA
584	NLTRPPR76C1000043	USA
585	NLTRPPR74C1000042	USA
586	NLTRPPR72C1000041	USA



TEMSA

## SERVICE BULLETIN

587	NLTRPPR76B1000011	USA
588	NLTRPPR74B1000010	USA
589	NLTRPPR78B1000009	USA
590	NLTRPPR76B1000008	USA
591	NLTRPPR74B1000007	USA
592	NLTRPPR72B1000006	USA
593	NLTRPPR70B1000005	USA
594	NLTRPPR79B1000004	USA
595	NLTRPPR77B1000003	USA
596	NLTRPPR75B1000002	USA
597	NLTRPPP74A1000011	USA
598	NLTRPPP72A1000010	USA
599	NLTRPPP76A1000009	USA
600	NLTRPPP74A1000008	USA
601	NLTRPPP72A1000007	USA
602	NLTRPPP70A1000006	USA
603	NLTRPPP79A1000005	USA
604	NLTRPPP77A1000004	USA
605	NLTRPPP75A1000003	USA
606	NLTRPPP73A1000002	USA
607	NLTRPPP71A1000001	USA
608	NLTRPPN79A1000072	USA
609	NLTRPPN77A1000071	USA
610	NLTRPPN75A1000070	USA
611	NLTRPPN79A1000069	USA
612	NLTRPPN77A1000068	USA
613	NLTRPPN75A1000067	USA
614	NLTRPPN73A1000066	USA



TEMSA

## SERVICE BULLETIN

615	NLTRPPN71A1000065	USA
616	NLTRPPN7XA1000064	USA
617	NLTRPPN78A1000063	USA
618	NLTRPPN76A1000062	USA
619	NLTRPPN74A1000061	USA
620	NLTRPPN72A1000060	USA
621	NLTRPPN76A1000059	USA
622	NLTRPPN74A1000058	USA
623	NLTRPPN72A1000057	USA
624	NLTRPPN70A1000056	USA
625	NLTRPPN79A1000055	USA
626	NLTRPPN77A1000054	USA
627	NLTRPPN75A1000053	USA
628	NLTRPPN73A1000052	USA
629	NLTRPPN71A1000051	USA
630	NLTRPPN7XA1000050	USA
631	NLTRPPN73A1000049	USA
632	NLTRPPN71A1000048	USA
633	NLTRPPN7XA1000047	USA
634	NLTRPPN78A1000046	USA
635	NLTRPPN76A1000045	USA
636	NLTRPPN74A1000044	USA
637	NLTRPPN72A1000043	USA
638	NLTRPPN70A1000042	USA
639	NLTRPPN79A1000041	USA
640	NLTRPPN77A1000040	USA
641	NLTRPPN70A1000039	USA
642	NLTRPPN7491000038	USA



643	NLTRPPN77A1000037	USA
644	NLTRPPN75A1000036	USA
645	NLTRPPN7991000035	USA
646	NLTRPPN71A1000034	USA
647	NLTRPPN7XA1000033	USA
648	NLTRPPN7391000032	USA
649	NLTRPPN76A1000031	USA
650	NLTRPPN7X91000030	USA
651	NLTRPPN78A1000029	USA
652	NLTRPPN76A1000028	USA
653	NLTRPPN74A1000027	USA
654	NLTRPPN7891000026	USA
655	NLTRPPN70A1000025	USA
656	NLTRPPN79A1000024	USA
657	NLTRPPN77A1000023	USA
658	NLTRPPN75A1000022	USA
659	NLTRPPN73A1000021	USA
660	NLTRPPN71A1000020	USA
661	NLTRPPN7091000019	USA
662	NLTRPPN7991000018	USA
663	NLTRPPN7791000017	USA
664	NLTRPPN7591000016	USA
665	NLTRPPN78A1000015	USA
666	NLTRPPN7191000014	USA
667	NLTRPPN7X91000013	USA
668	NLTRPPN7891000012	USA
669	NLTRPPN7691000011	USA
670	NLTRPPN7491000010	USA



**TEMSA**

## SERVICE BULLETIN

671	NLTRPPN7891000009	USA
672	NLTRPPN7691000008	USA
673	NLTRPPN7491000007	USA
674	NLTRPPN7291000006	USA
675	NLTRPPN7091000005	USA
676	NLTRPPN7081000004	USA
677	NLTRPPN7981000003	USA