

Field campaign

Topic	Bentayga - Control Unit for Fuel Pump (SC 20/05)
Market area	China 796 VW Import Comp. Ltd (Vico), Beijing (6796),United Kingdom E01 Bentley UK (6E01),United States E05 Bentley USA and rest America (6E05)
Brand	Bentley
Transaction No.	2058764/2
Campaign number	EB47
Note	
Type	Field Campaign
US code	

Vehicle data

Bentayga

Sales types

Type	MY	Brand	Designation	Engine code	Gearbox code	Final drive code
4V1*	2017	E		*	*	*
4V1*	2019	E		*	*	*

Chas is numbers

Manufacturer	Filler	Type	Filler	MY	Factory	From	To	Prod from	Prod to
SJA	AB1	4V	1	K	C	024124	024124		
SJA	AB1	4V	2	H	C	012611	012611		
SJA	AB1	4V	X	H	C	012386	012386		
SJA	AB1	4V	9	H	C	011522	011522		
SJA	AC2	ZV	3	H	C	014332	014332		

Documents

Document name
master.xml

Notes

▪ Repair instructions

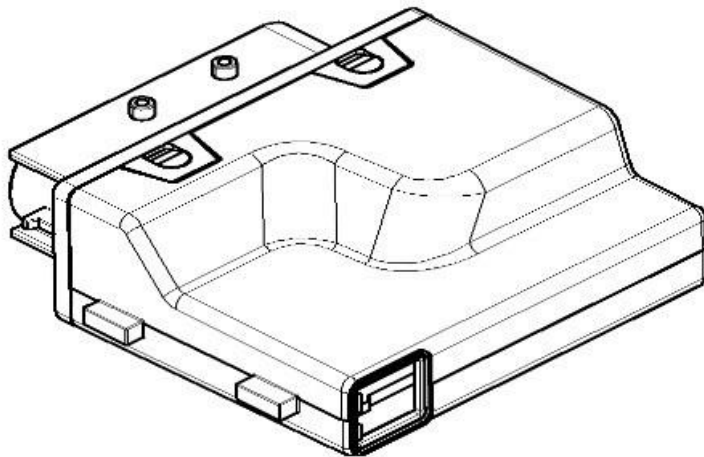
Technical background

Fuel pump control unit 4M0 906 093K has been superseded by fuel pump control unit 4M0 906 093N, however, this change is not currently applicable to Bentley. A small quantity of "N" level control units were mistakenly issued as spare parts and have subsequently been fitted to Customer vehicles.

On vehicles with the "N" level part installed the Customer may complain of noise from the rear seat area, it is possible that fuel pumps may become noisy during operation. At present no other symptoms or faults are expected.

Remedy

Correct level fuel pump control unit(s) should be installed – 4M0 906 093K.



Customer notification

Customers do not need to be notified directly of this Campaign. Please ensure that all vehicles are checked and repaired during a service visit. You should also inform your new and used car sales departments so that the vehicles affected can be checked and if necessary repaired immediately and not just prior to sale.

Warranty accounting instructions

Warranty Type - 710, 790

Damage Service Number - EB47

Damage Code – 0066

Criteria ID - 01

Time to replace the Fuel delivery module

Labour

Labour Operation Code 20 66 19 50

Time 50TU

Replace Fuel Pump Electronic Control Unit J538

Labour

Labour Operation Code 20 70 19 50

Time 10TU

Replace Fuel Pump Electronic Control Unit J835

Labour

Labour Operation Code 20 70 19 05

Time 40TU

Time to remove and refit the rear seats (4 seat)

Labour Operation Code 68 16 19 01

Time 190 TU

Time to remove and refit the rear seats (5 seat)

Labour Operation Code 72 48 20 05

Time 100 TU

Time to remove and refit the seat sill panel

Labour Operation Code 68 05 19 00

Time 20 TU

Time to remove and refit the boot side trim panel

Labour Operation Code 70 03 19 00

Time 40 TU

Genuine parts

The required replacement parts should be ordered from Bentley Motors Limited, Crewe or through your regional Bentley parts distribution centre.

Parts supply

W12 6.0 Litre

Part Number	Description	Quantity
4M0 906 093 K	Control Unit For Fuel Pump	2 Off

V8 4.0 Litre

Part Number	Description	Quantity
4M0 906 093 K	Control Unit For Fuel Pump	1 Off

Parts despatch control

.

Repair instructions

Notes

Technical background

Fuel pump control unit 4M0 906 093K has been superseded by fuel pump control unit 4M0 906 093N, however, this change is not currently applicable to Bentley. A small quantity of "N" level control units were mistakenly issued as spare parts and have subsequently been fitted to Customer vehicles.

On vehicles with the "N" level part installed the Customer may complain of noise from the rear seat area, it is possible that fuel pumps may become noisy during operation. At present no other symptoms or faults are expected.

Check

If the vehicle is not already listed in the "Repair History" (Elsa Pro) check for the Blue campaign identification mark on the underside of the fuel filler door hinge – figure 1.



Figure 1

Genuine parts

The required replacement parts should be ordered from Bentley Motors Limited, Crewe or through your regional Bentley parts distribution centre.

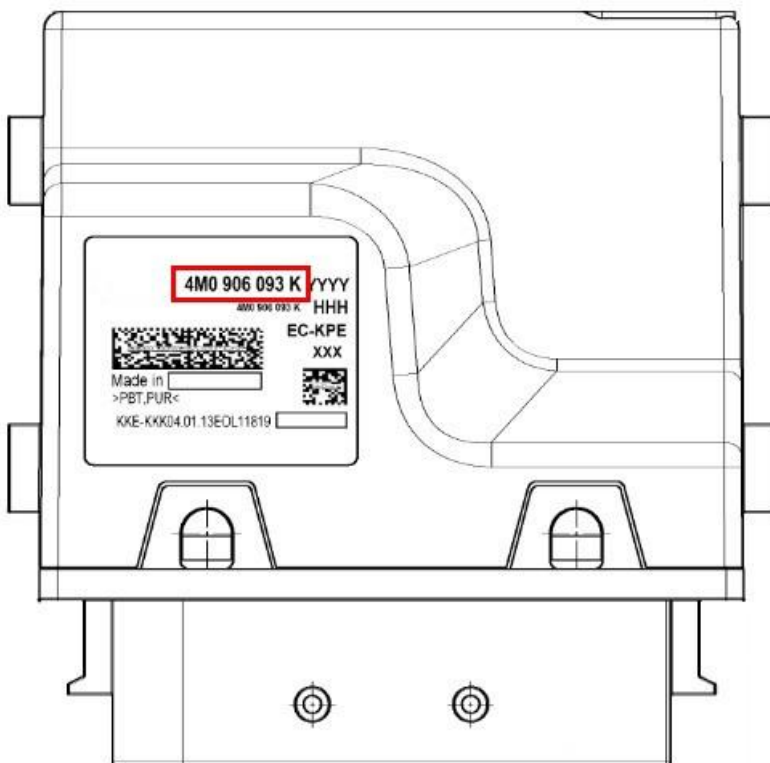
Work

6.0L - W12

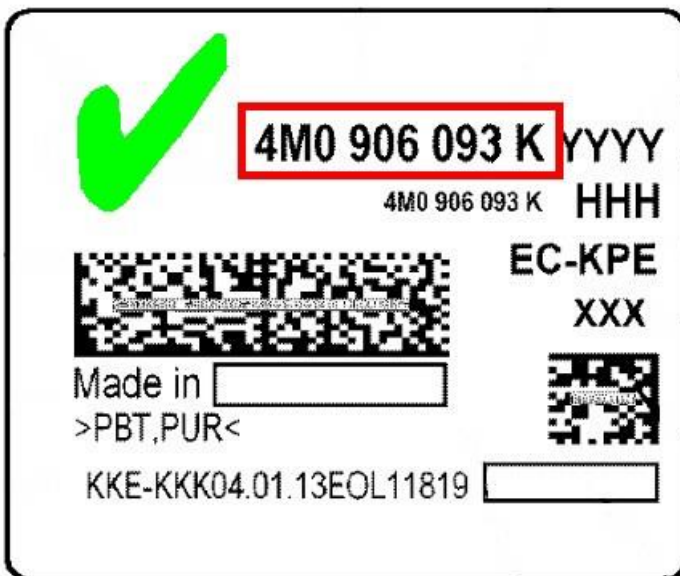
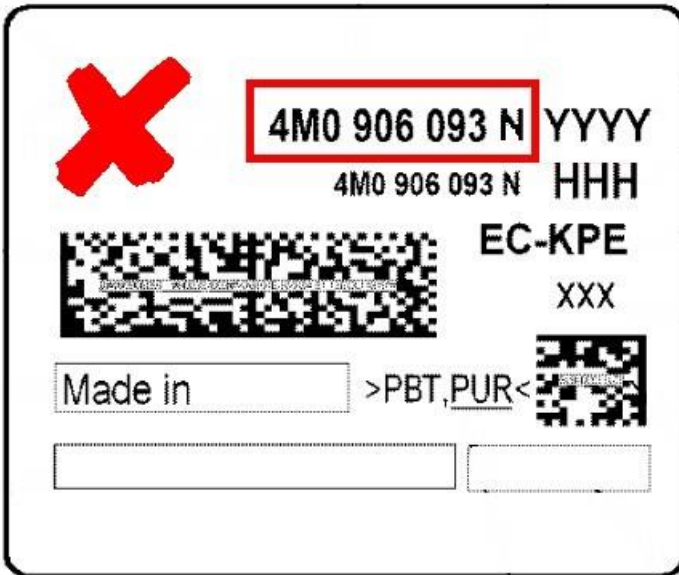
Check the part number marked on both fuel pump control units, refer to *Repair Group 20 Fuel supply, gas operation – 6.0L W12 TSI – Fuel pump control units (J538, J835) – To remove and fit.*

4.0L - V8

Check the part number marked on the fuel pump control unit, refer to *Repair Group 20 Fuel supply, gas operation – 4.0L V8 TSI – Fuel pump control unit (J538) – To remove and fit.*



If the part number on the fuel pump control unit(s) is 4M0 906 093 N or the control unit cannot be identified, proceed to replace with control unit 4M0 906 093 K. Should the original control unit(s) be identified as 4M0 906 093 K no further action is required.



Note: It is possible on 6.0L – W12 vehicle variants there may be a mixture of 4M0 906 093 K and 4M0 906 093 N control units, only the “ N” level fuel pump control units should be replaced.

Identification

Blue campaign identification mark on the underside of the fuel filler door hinge - figure 1.